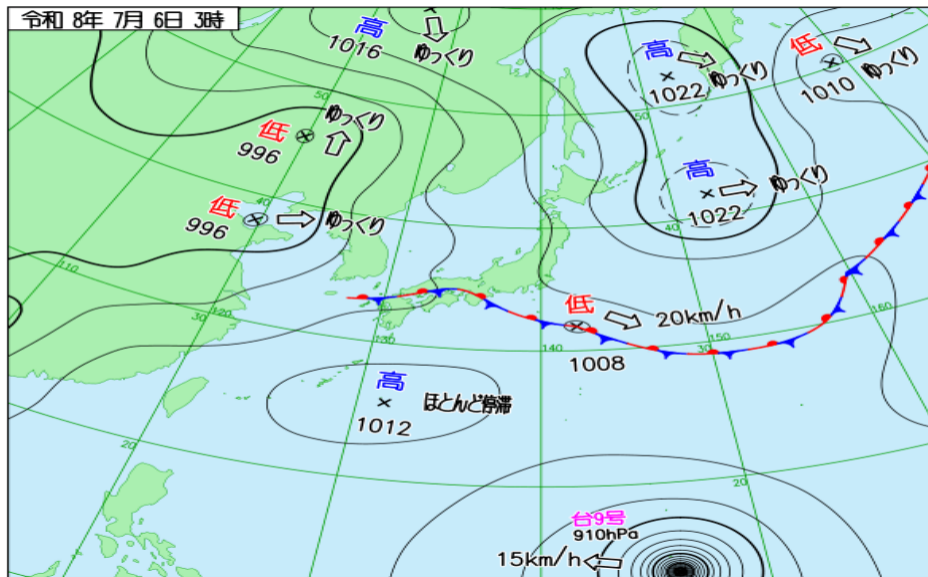
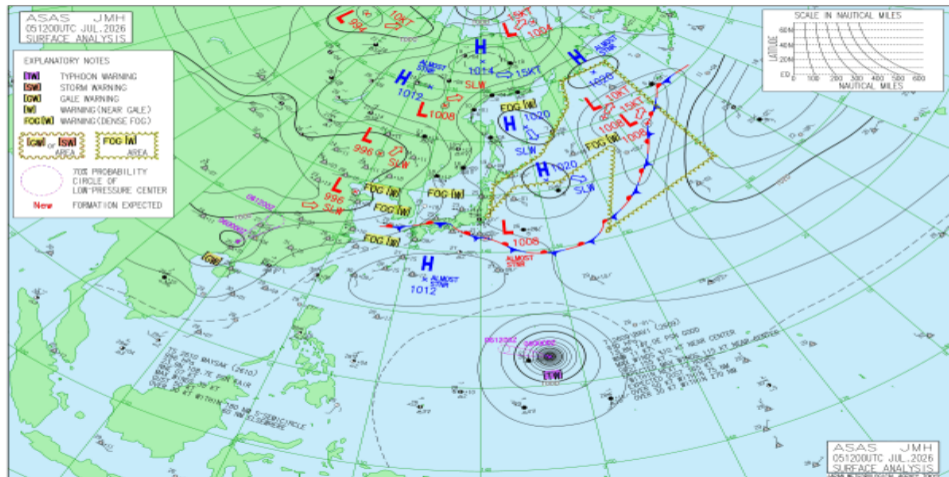


# JMA 日本域実況天気図 07/05 18Z

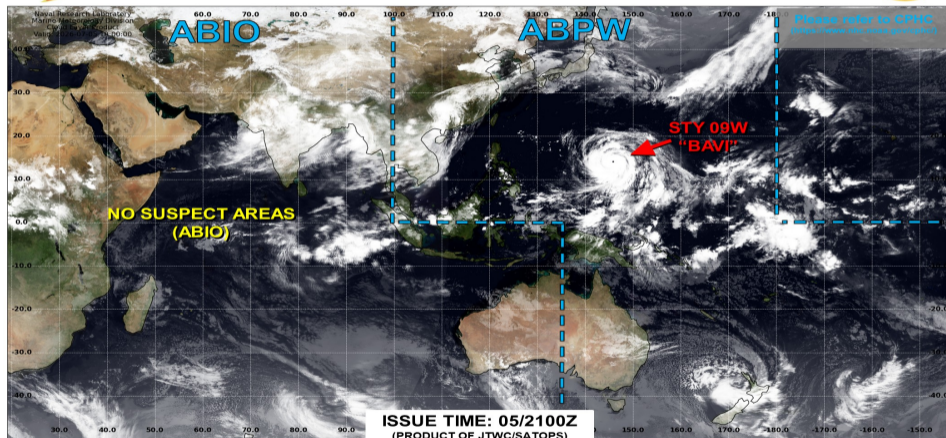


# JMA アジア太平洋域実況天気図 07/05 12Z





## JOINT TYPHOON WARNING CENTER



TC development unlikely within 24 hours



TC development likely, but expected to occur beyond 24 hours



TC development likely within 24 hours (Reference TCFA)

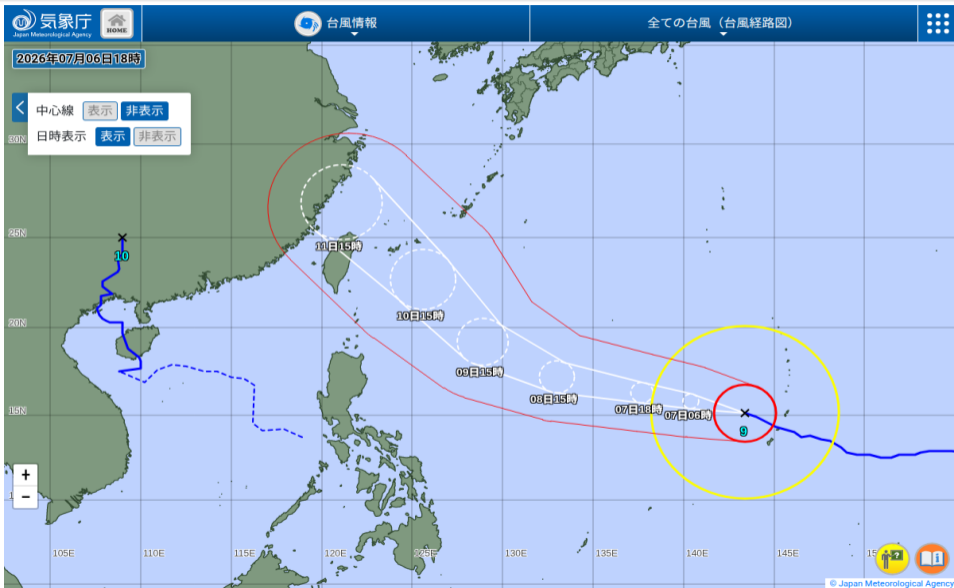


Monitoring for potential transition to TC. Invest label color denotes tropical transition probability

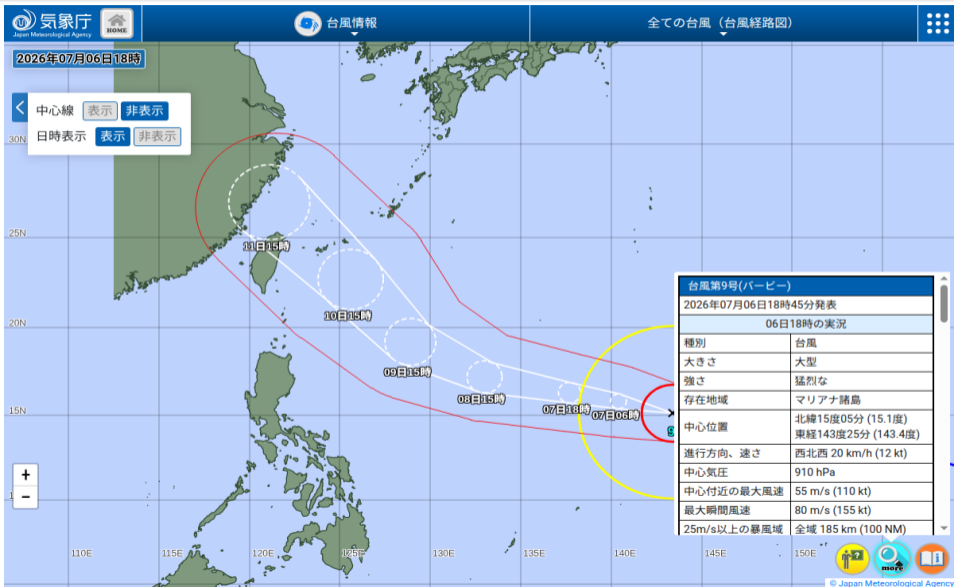


Tropical Cyclone (Reference Warning)

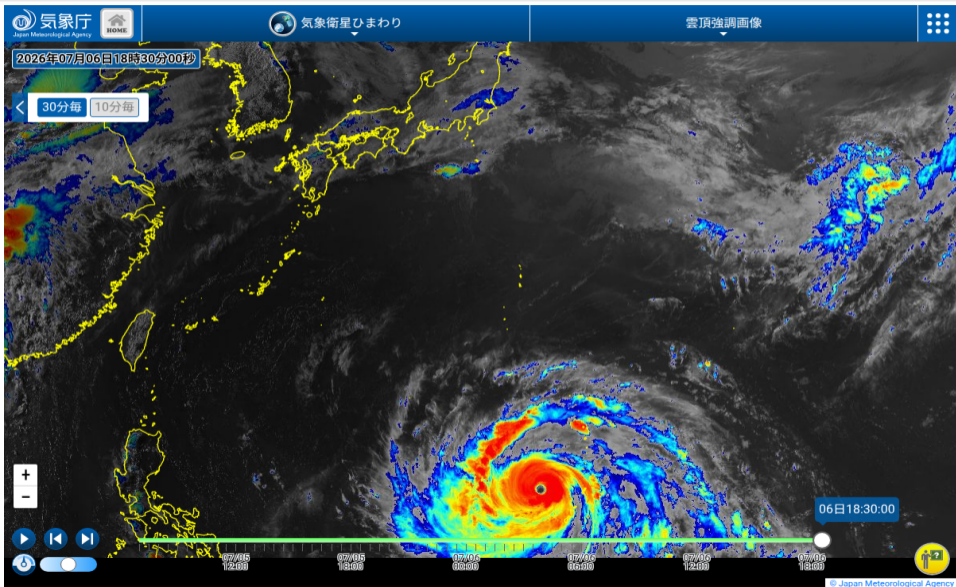
# JMA 台風実況



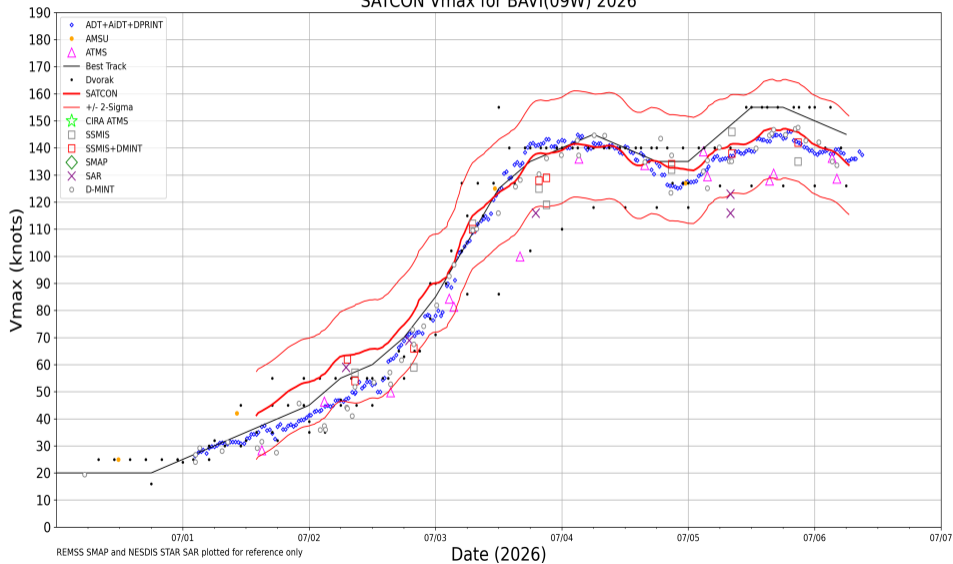
# JMA 台風実況



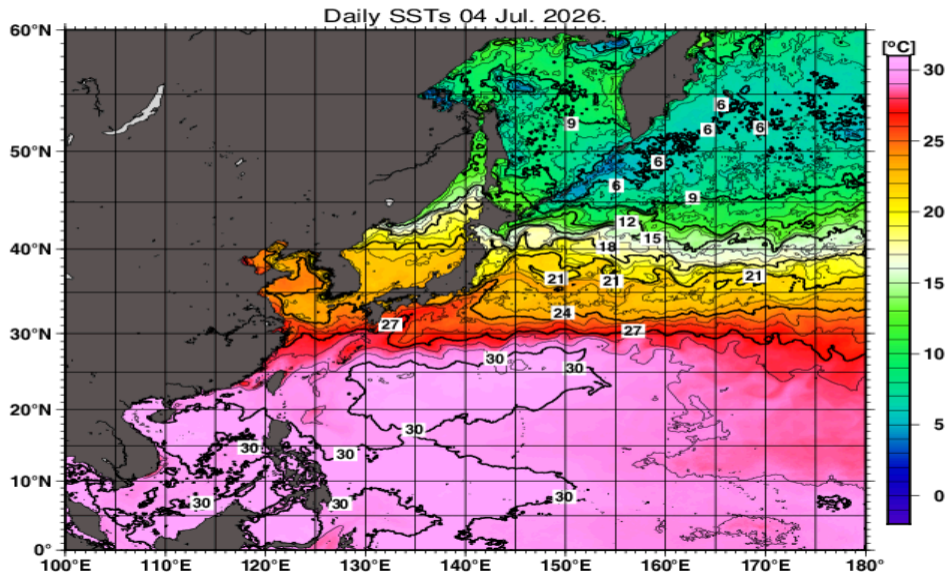
# ひまわり雲頂強調



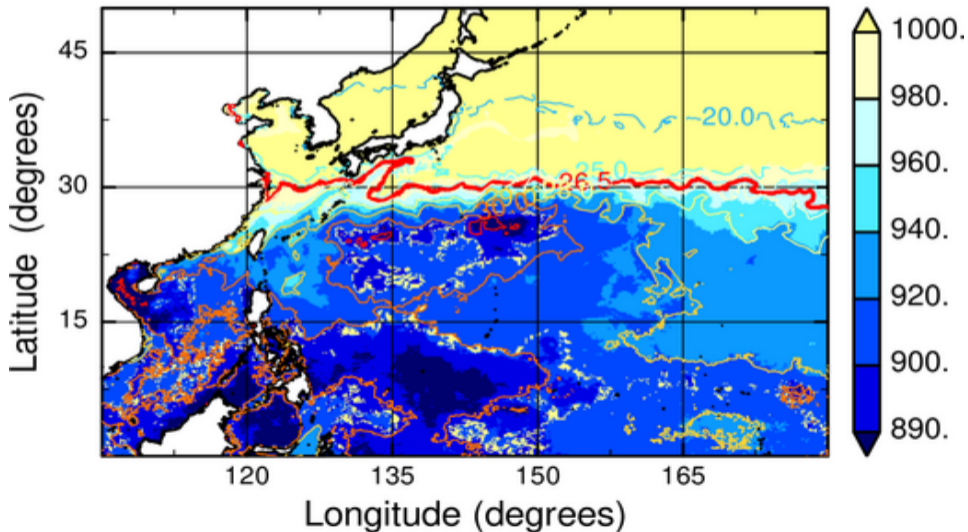
SATCON Vmax for BAVI(09W) 2026



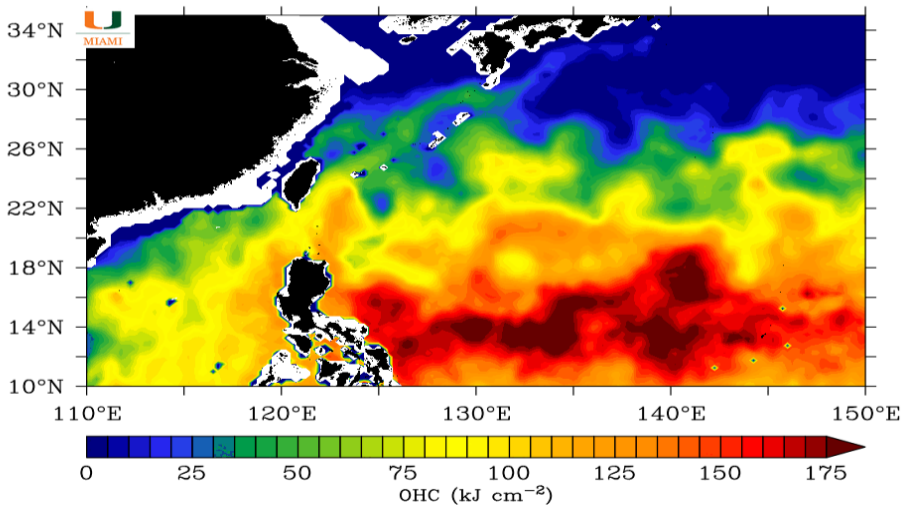
# JMA 海面水温解析



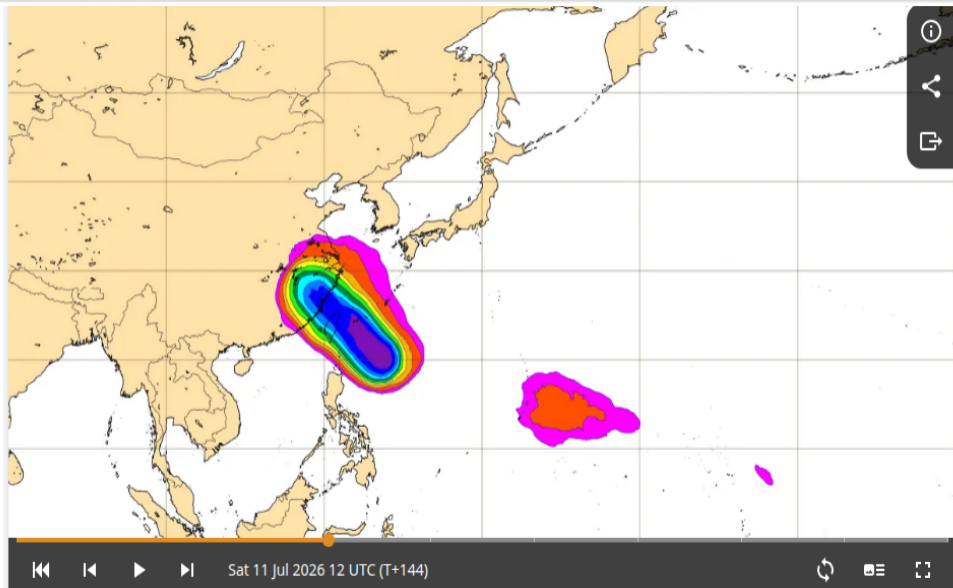
MPI<sub>BE</sub>, JMAGSM+HIMSST (mb) (00:00:00Z04Jul2026)



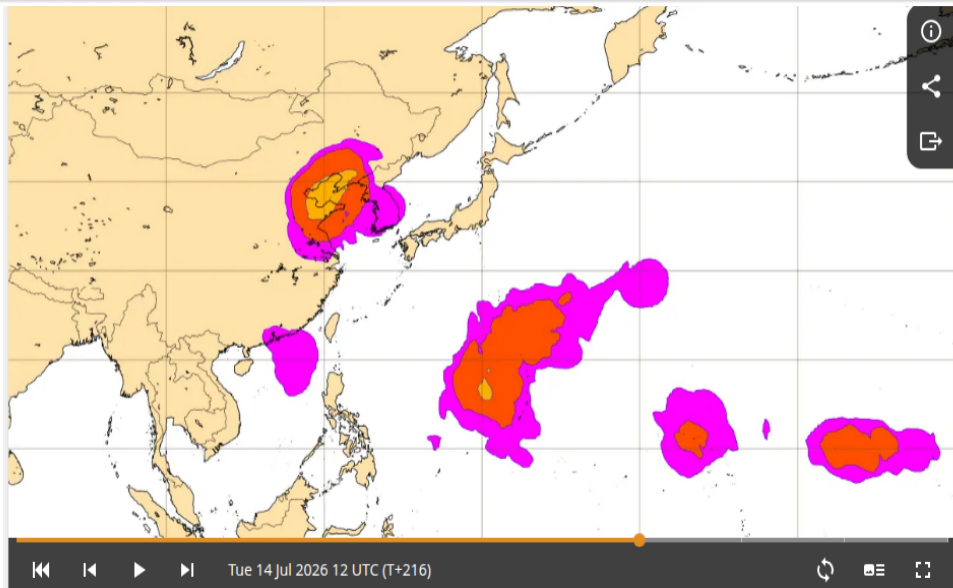
Ocean Heat Content: 07/05/2026



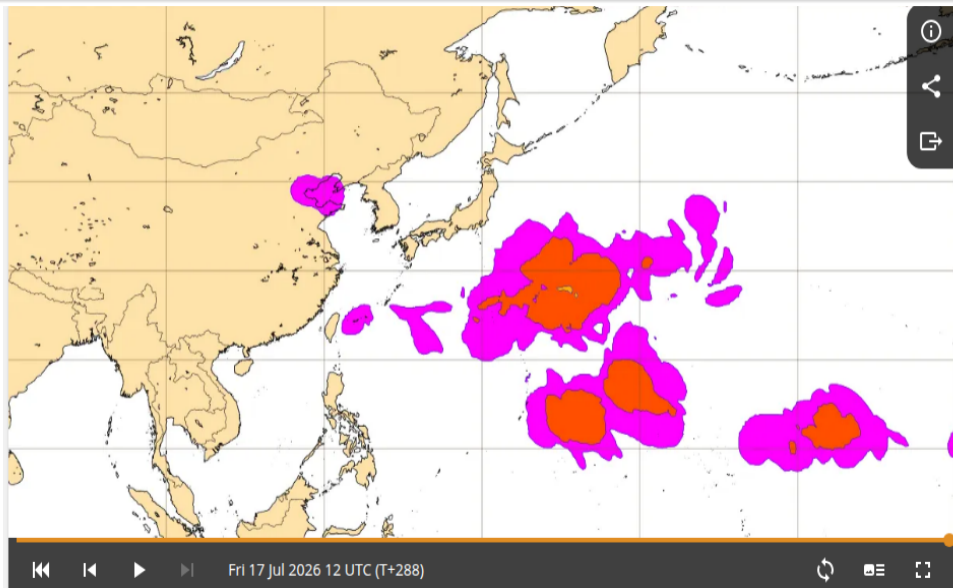
# ECMWF TC genesis 07/11 12Z (6 日先) 予報



# ECMWF TC genesis 07/14 12Z (9 日先) 予報



# ECMWF TC genesis 07/17 12Z (12 日先) 予報

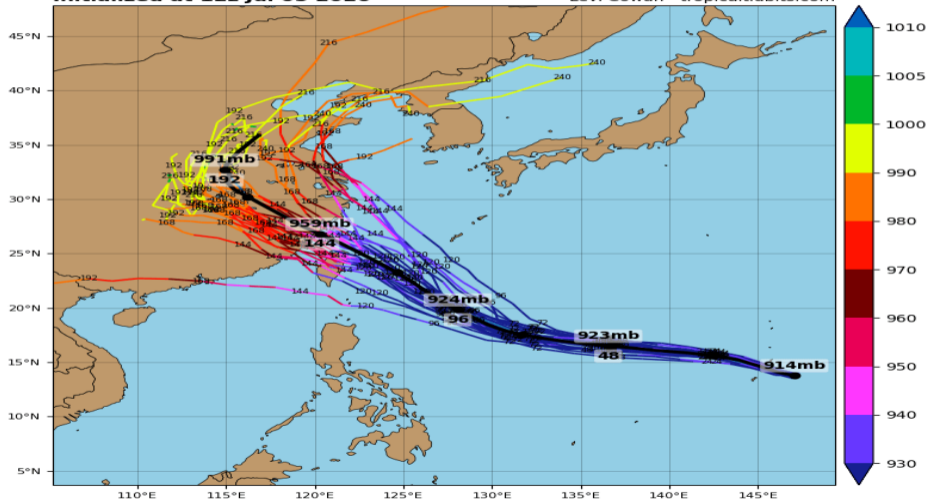


# 09W GEFS (07/05 12Z 初期値)

## 09W BAVI - GEFS Tracks and Min. MSLP (hPa)

Initialized at 12z Jul 05 2026

Levi Cowan - tropicaltidbits.com

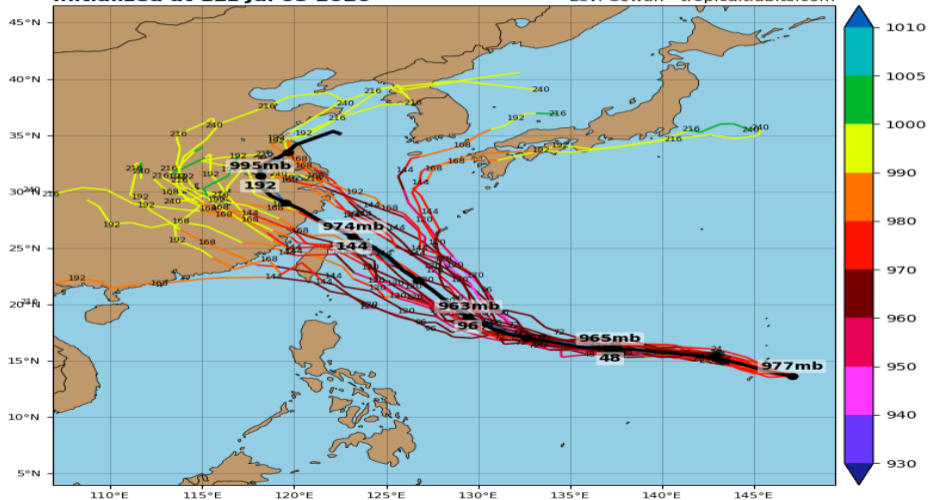


# 09W GEPS (07/05 12Z 初期値)

## 09W BAVI - GEPS Tracks and Min. MSLP (hPa)

Initialized at 12z Jul 05 2026

Levi Cowan - tropicaltidbits.com

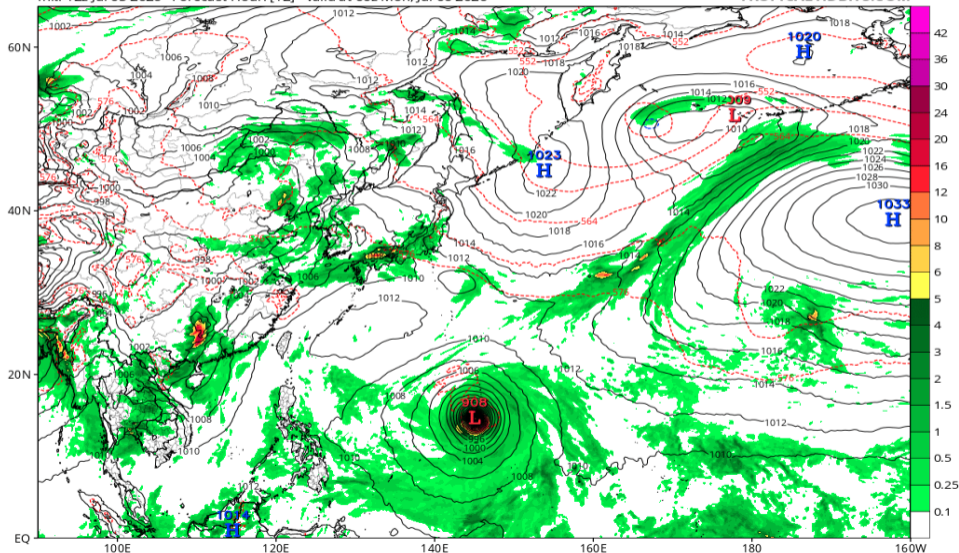


# 地上気圧配置 (GFS 07/06 00Z 予報)

GFS 6-hour Averaged Precip Rate (mm/hr), MSLP (hPa) & 1000-500mb Thickness (dam)

Init: 12z Jul 05 2026 Forecast Hour: [12] valid at 00z Mon, Jul 06 2026

TROPICALTIDBITS.COM

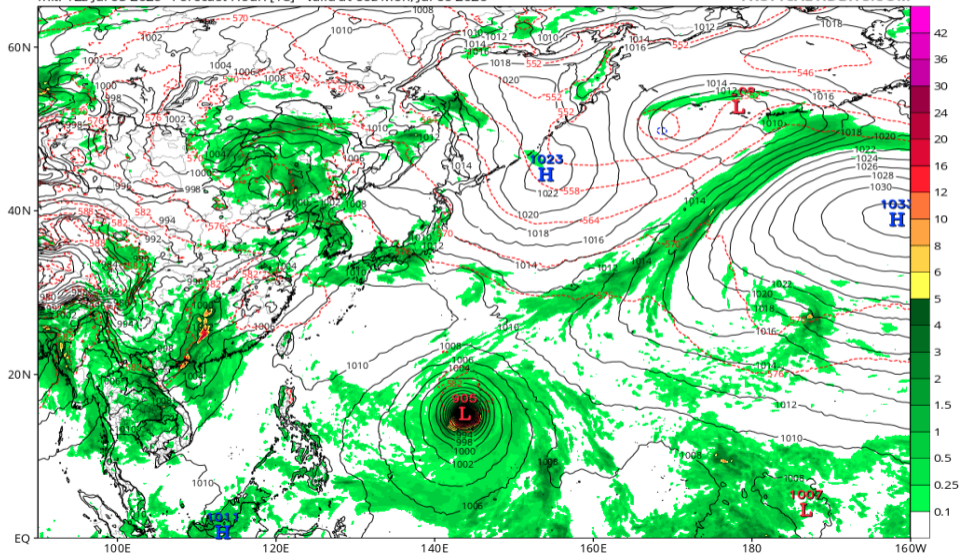


# 地上気圧配置 (GFS 07/06 06Z 予報)

GFS 6-hour Averaged Precip Rate (mm/hr), MSLP (hPa) & 1000-500mb Thickness (dam)

Init: 12z Jul 05 2026 Forecast Hour: [18] valid at 06z Mon, Jul 06 2026

TROPICALTIDBITS.COM

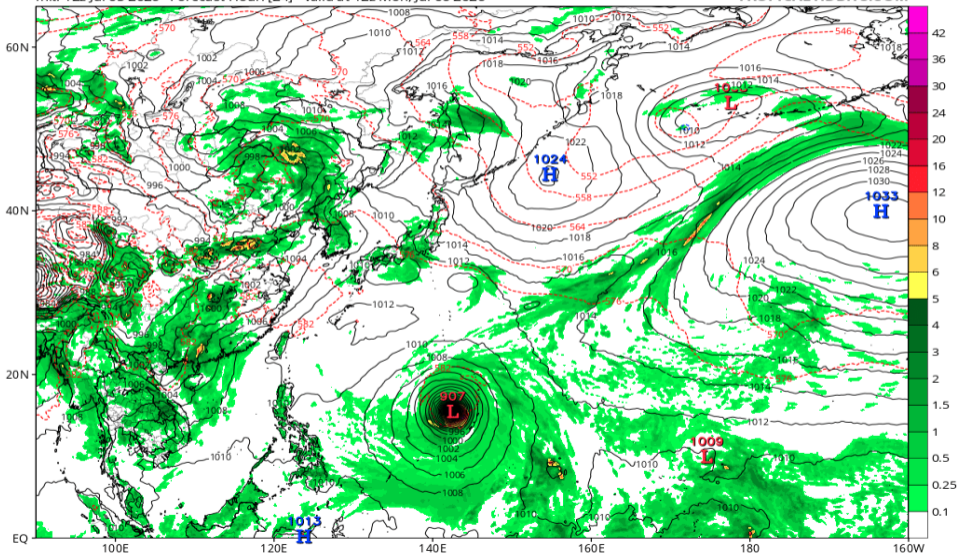


# 地上気圧配置 (GFS 07/06 12Z 予報)

GFS 6-hour Averaged Precip Rate (mm/hr), MSLP (hPa) & 1000-500mb Thickness (dam)

Init: 12z Jul 05 2026 Forecast Hour: [24] valid at 12z Mon, Jul 06 2026

TROPICALTIDBITS.COM



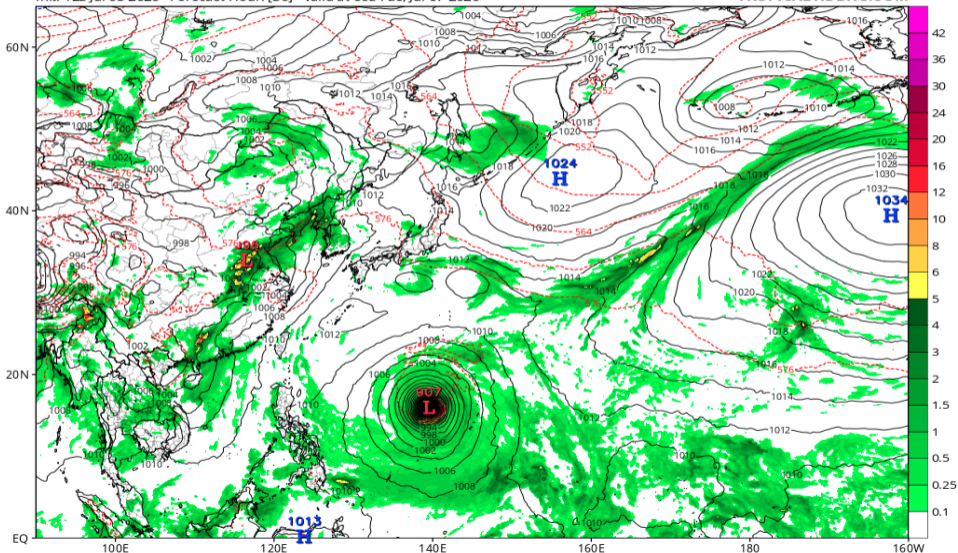


# 地上気圧配置 (GFS 07/07 00Z 予報)

GFS 6-hour Averaged Precip Rate (mm/hr), MSLP (hPa) & 1000-500mb Thickness (dam)

Init: 12z Jul 05 2026 Forecast Hour: [36] valid at 00z Tue, Jul 07 2026

TROPICALTIDBITS.COM

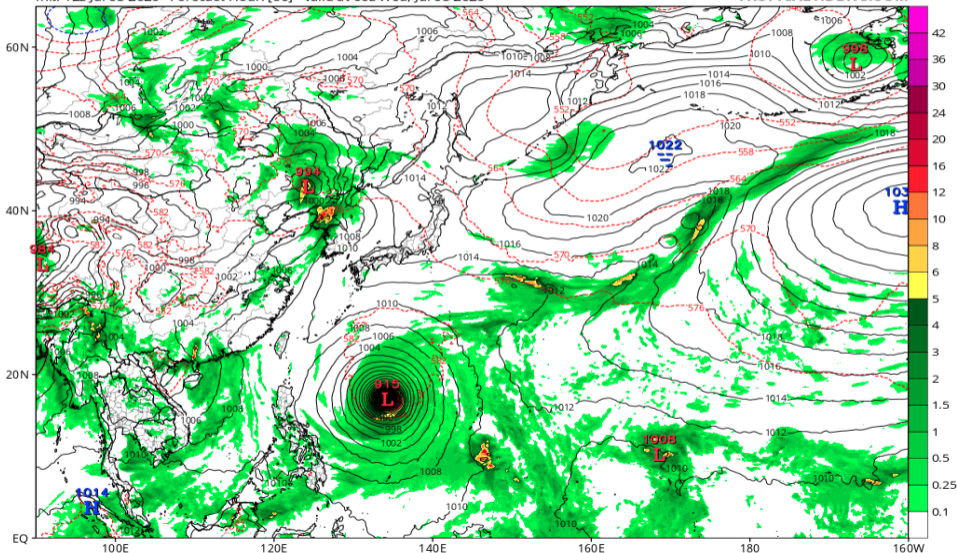


# 地上気圧配置 (GFS 07/08 00Z 予報)

GFS 6-hour Averaged Precip Rate (mm/hr), MSLP (hPa) & 1000-500mb Thickness (dam)

Init: 12z Jul 05 2026 Forecast Hour: [60] valid at 00z Wed, Jul 08 2026

TROPICALTIDBITS.COM

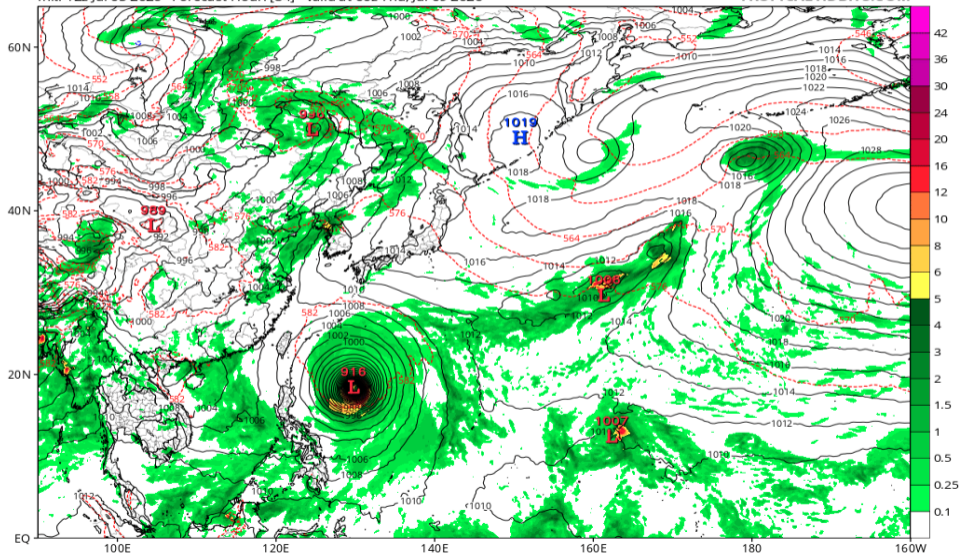


# 地上気圧配置 (GFS 07/09 00Z 予報)

GFS 6-hour Averaged Precip Rate (mm/hr), MSLP (hPa) & 1000-500mb Thickness (dam)

Init: 12z Jul 05 2026 Forecast Hour: [84] valid at 00z Thu, Jul 09 2026

TROPICALTIDBITS.COM

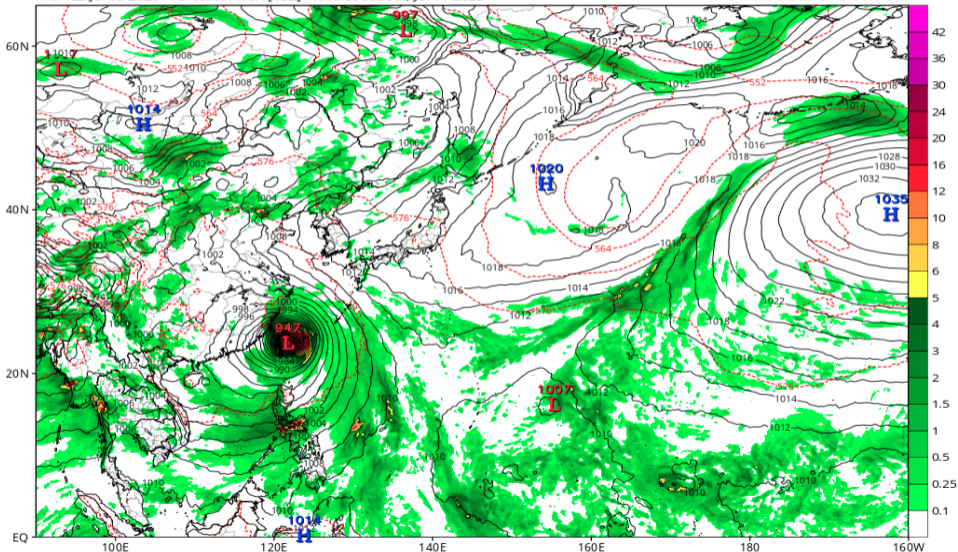


# 地上気圧配置 (GFS 07/11 00Z 予報)

GFS 6-hour Averaged Precip Rate (mm/hr), MSLP (hPa) & 1000-500mb Thickness (dam)

Init: 12z Jul 05 2026 Forecast Hour: [132] valid at 00z Sat, Jul 11 2026

TROPICALTIDBITS.COM

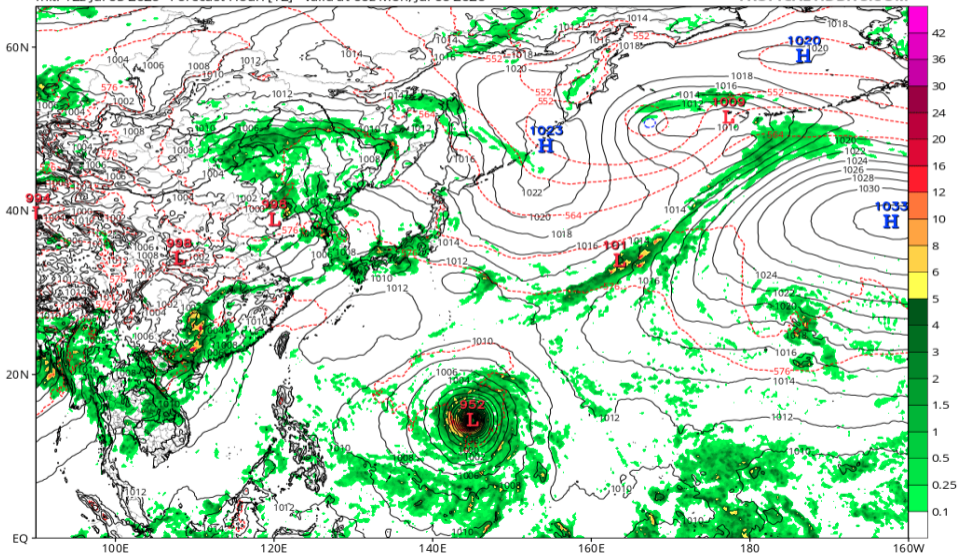


# 地上気圧配置 (ECMWF 07/06 00Z 予報)

ECMWF Instantaneous Precip Rate (mm/hr), MSLP (hPa) & 1000-500mb Thickness (dam)

Init: 12z Jul 05 2026 Forecast Hour: [12] valid at 00z Mon, Jul 06 2026

TROPICALTIDBITS.COM

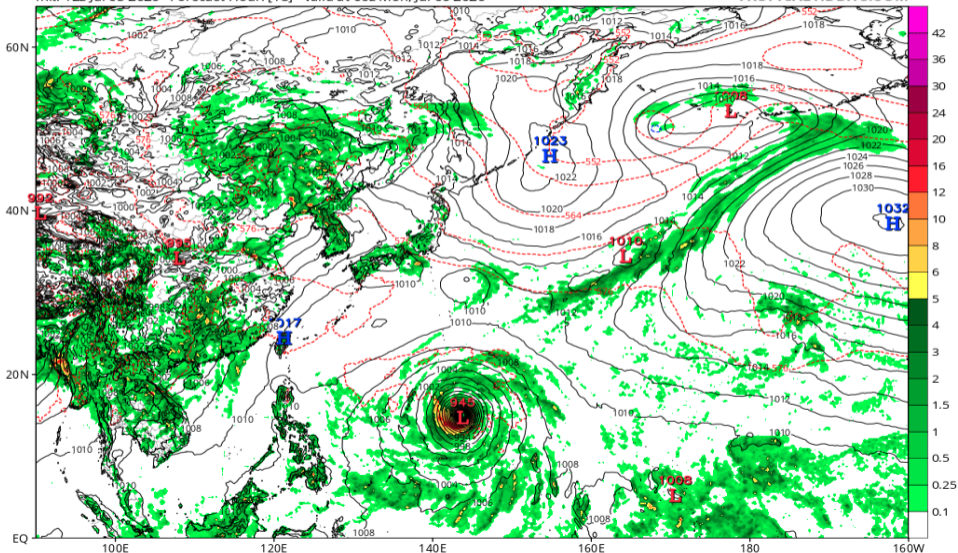


# 地上気圧配置 (ECMWF 07/06 06Z 予報)

ECMWF Instantaneous Precip Rate (mm/hr), MSLP (hPa) & 1000-500mb Thickness (dam)

Init: 12z Jul 05 2026 Forecast Hour: [18] valid at 06z Mon, Jul 06 2026

TROPICALTIDBITS.COM

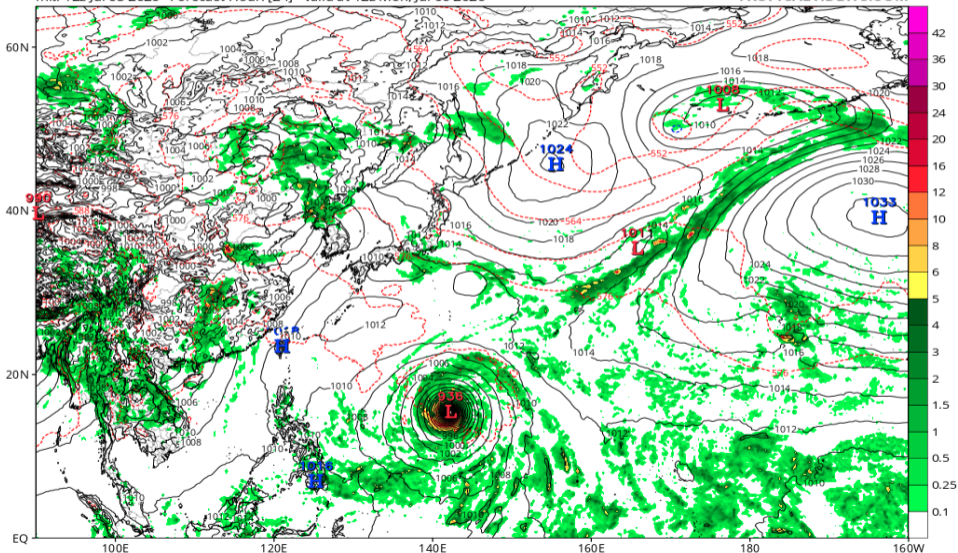


# 地上気圧配置 (ECMWF 07/06 12Z 予報)

ECMWF Instantaneous Precip Rate (mm/hr), MSLP (hPa) & 1000-500mb Thickness (dam)

Init: 12z Jul 05 2026 Forecast Hour: [24] valid at 12z Mon, Jul 06 2026

TROPICALTIDBITS.COM

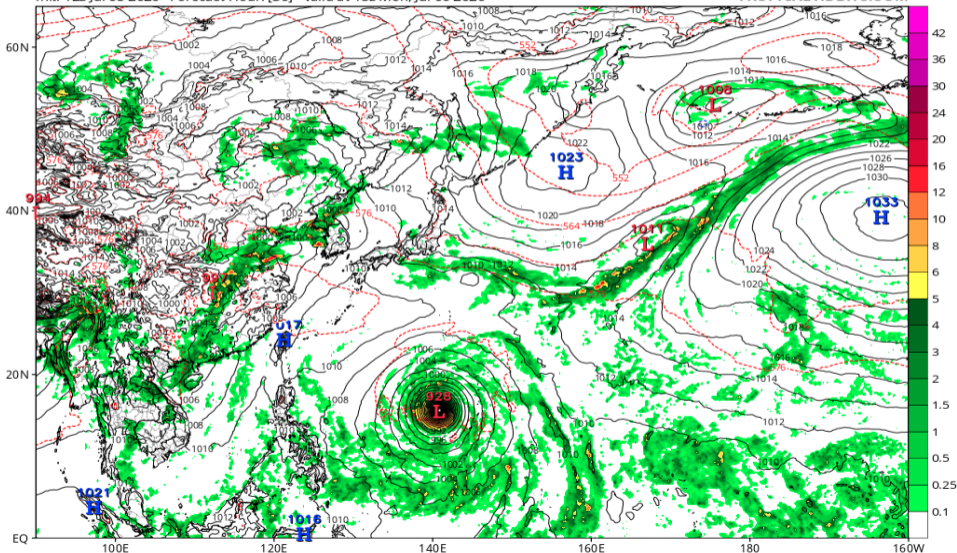


# 地上気圧配置 (ECMWF 07/06 18Z 予報)

ECMWF Instantaneous Precip Rate (mm/hr), MSLP (hPa) & 1000-500mb Thickness (dam)

Init: 12z Jul 05 2026 Forecast Hour: [30] valid at 18z Mon, Jul 06 2026

TROPICALTIDBITS.COM

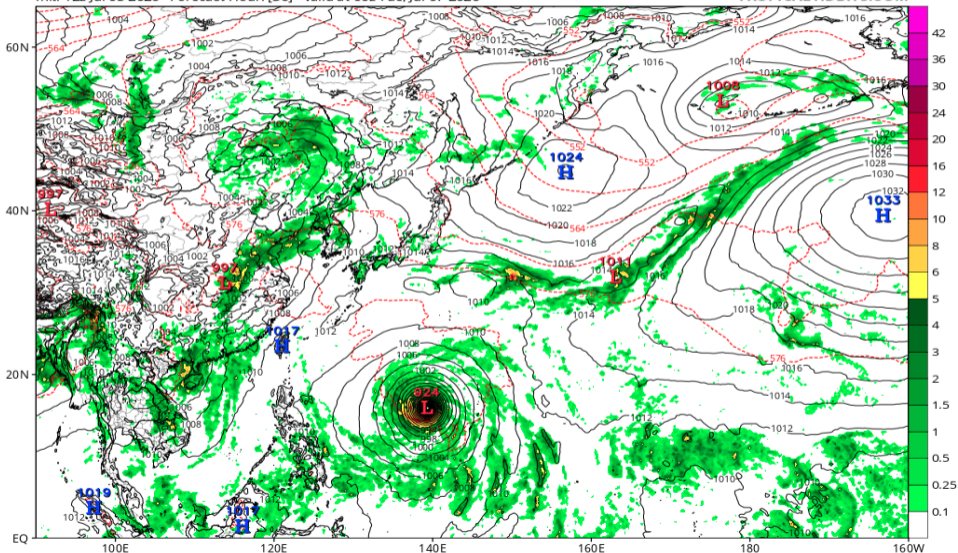


# 地上気圧配置 (ECMWF 07/07 00Z 予報)

ECMWF Instantaneous Precip Rate (mm/hr), MSLP (hPa) & 1000-500mb Thickness (dam)

Init: 12z Jul 05 2026 Forecast Hour: [36] valid at 00z Tue, Jul 07 2026

TROPICALTIDBITS.COM

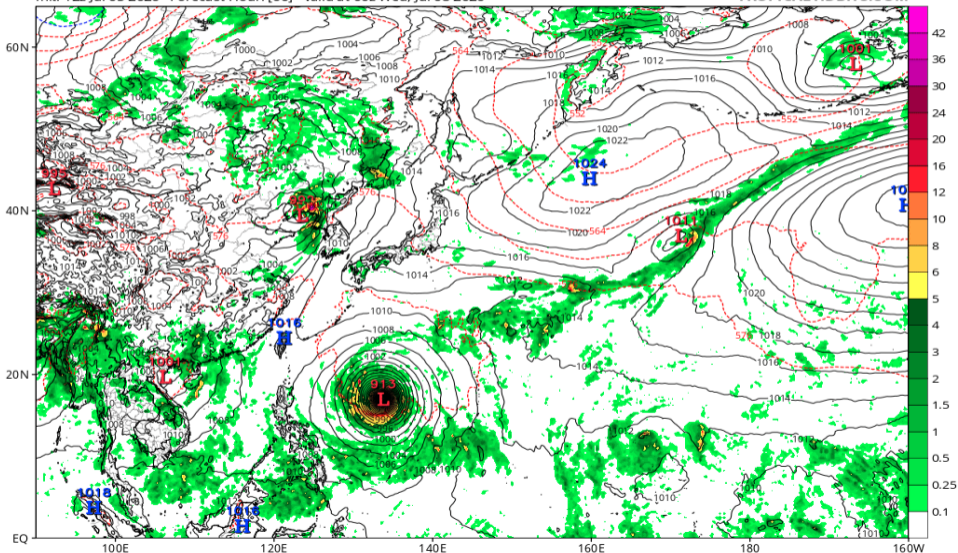


# 地上気圧配置 (ECMWF 07/08 00Z 予報)

ECMWF Instantaneous Precip Rate (mm/hr), MSLP (hPa) & 1000-500mb Thickness (dam)

Init: 12z Jul 05 2026 Forecast Hour: [60] valid at 00z Wed, Jul 08 2026

TROPICALTIDBITS.COM

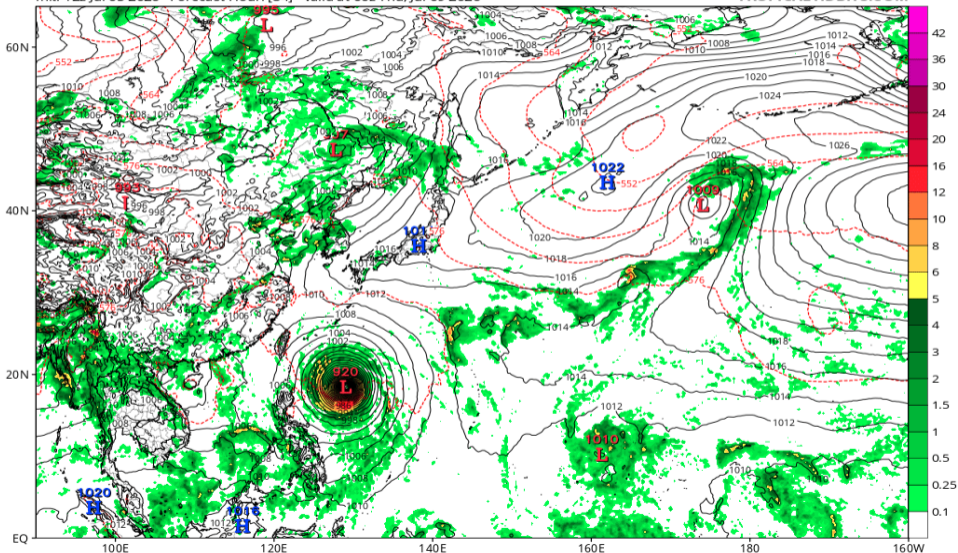


# 地上気圧配置 (ECMWF 07/09 00Z 予報)

ECMWF Instantaneous Precip Rate (mm/hr), MSLP (hPa) & 1000-500mb Thickness (dam)

Init: 12z Jul 05 2026 Forecast Hour: [84] valid at 00z Thu, Jul 09 2026

TROPICALTIDBITS.COM

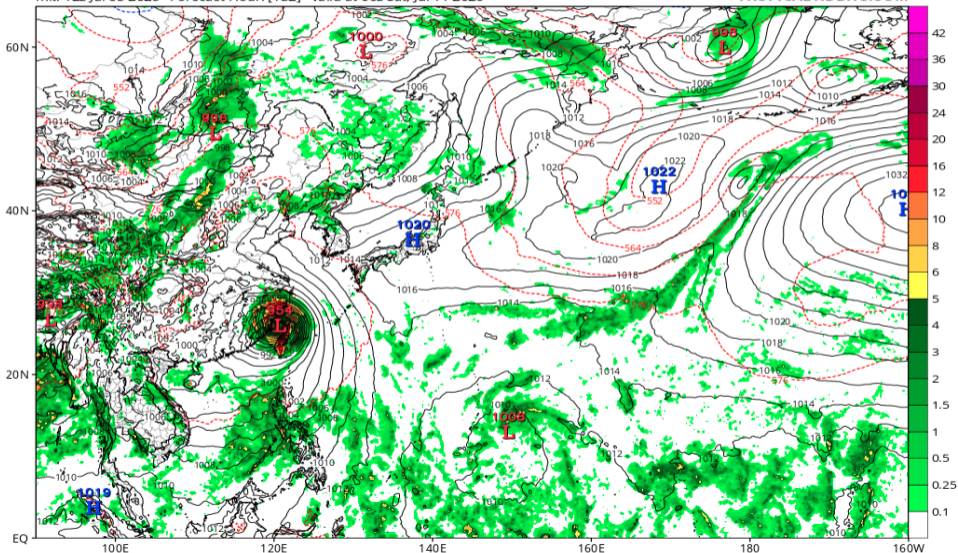


# 地上気圧配置 (ECMWF 07/11 00Z 予報)

ECMWF Instantaneous Precip Rate (mm/hr), MSLP (hPa) & 1000-500mb Thickness (dam)

Init: 12z Jul 05 2026 Forecast Hour: [132] valid at 00z Sat, Jul 11 2026

TROPICALTIDBITS.COM

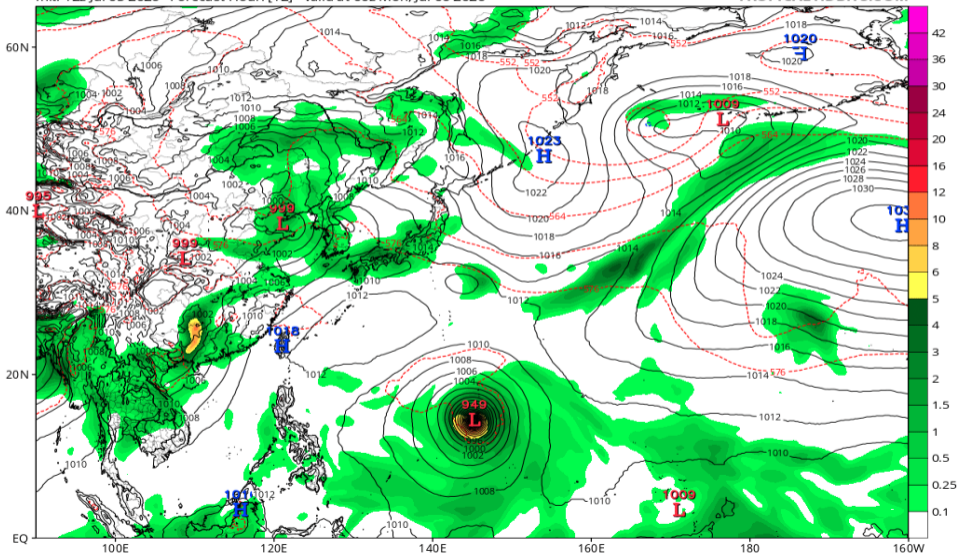


# 地上気圧配置 (AIFS 07/06 00Z 予報)

EC-AIFS 6-hour Averaged Precip Rate (mm/hr), MSLP (hPa) & 1000-500mb Thickness (dam)

Init: 12z Jul 05 2026 Forecast Hour: [12] valid at 00z Mon, Jul 06 2026

TROPICALTIDBITS.COM

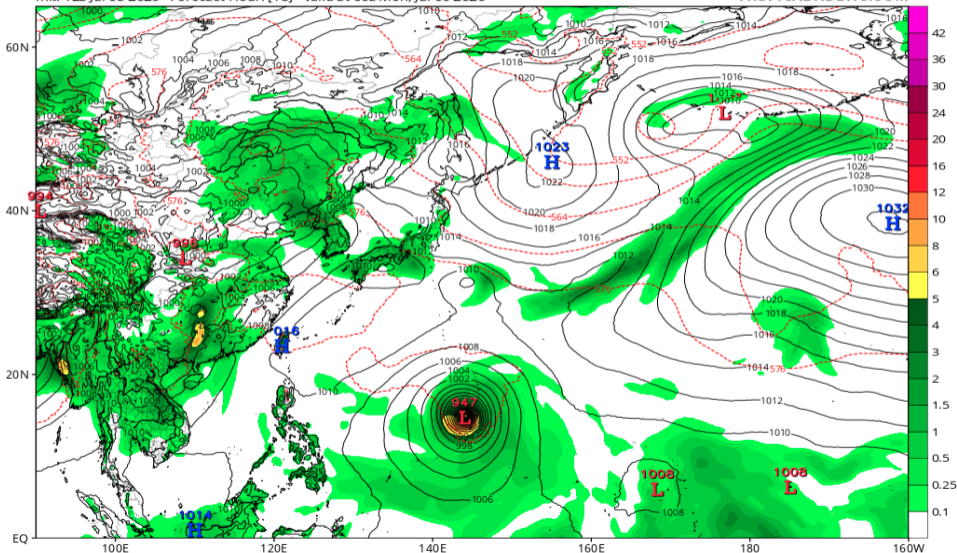


# 地上気圧配置 (AIFS 07/06 06Z 予報)

EC-AIFS 6-hour Averaged Precip Rate (mm/hr), MSLP (hPa) & 1000-500mb Thickness (dam)

Init: 12z Jul 05 2026 Forecast Hour: [18] valid at 06z Mon, Jul 06 2026

TROPICALTIDBITS.COM

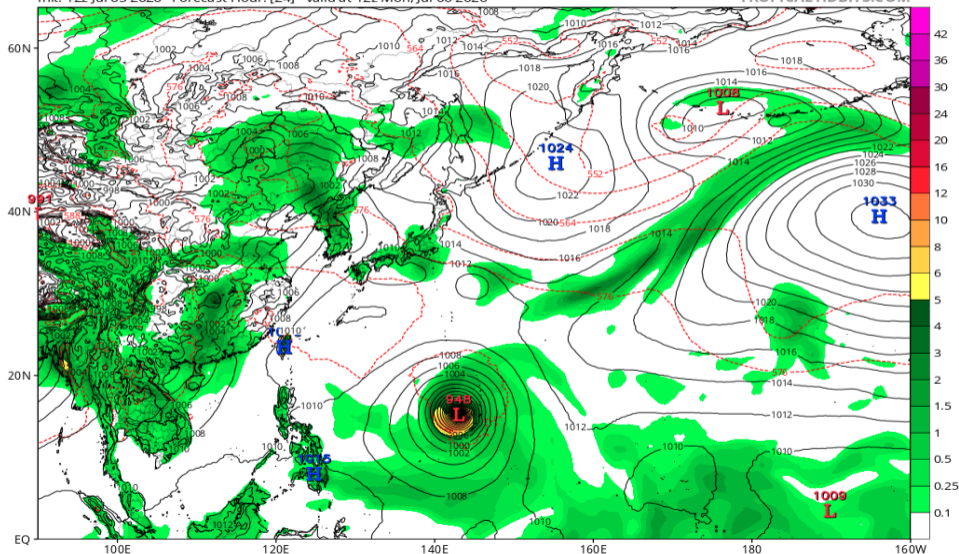


# 地上気圧配置 (AIFS 07/06 12Z 予報)

EC-AIFS 6-hour Averaged Precip Rate (mm/hr), MSLP (hPa) & 1000-500mb Thickness (dam)

Init: 12z Jul 05 2026 Forecast Hour: [24] valid at 12z Mon, Jul 06 2026

TROPICALTIDBITS.COM



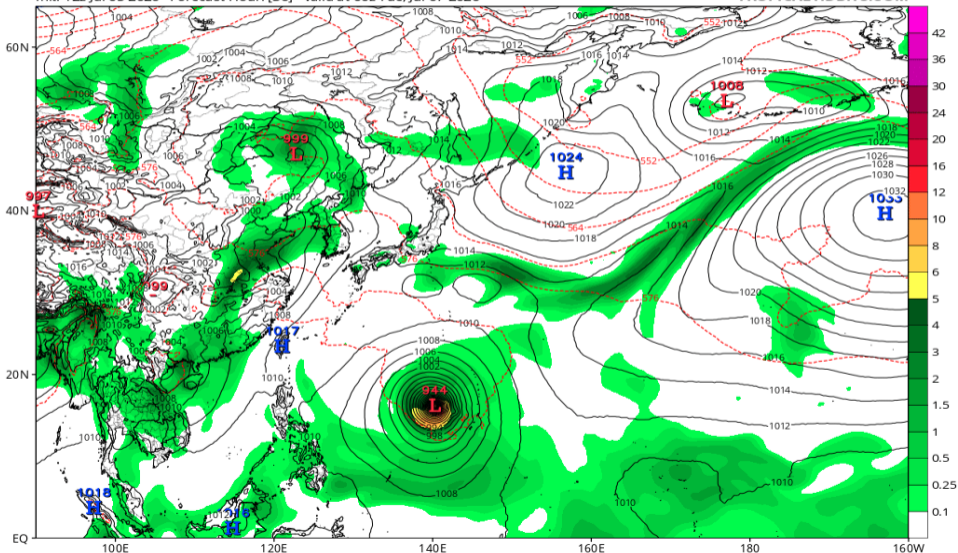


# 地上気圧配置 (AIFS 07/07 00Z 予報)

EC-AIFS 6-hour Averaged Precip Rate (mm/hr), MSLP (hPa) & 1000-500mb Thickness (dam)

Init: 12z Jul 05 2026 Forecast Hour: [36] valid at 00z Tue, Jul 07 2026

TROPICALTIDBITS.COM

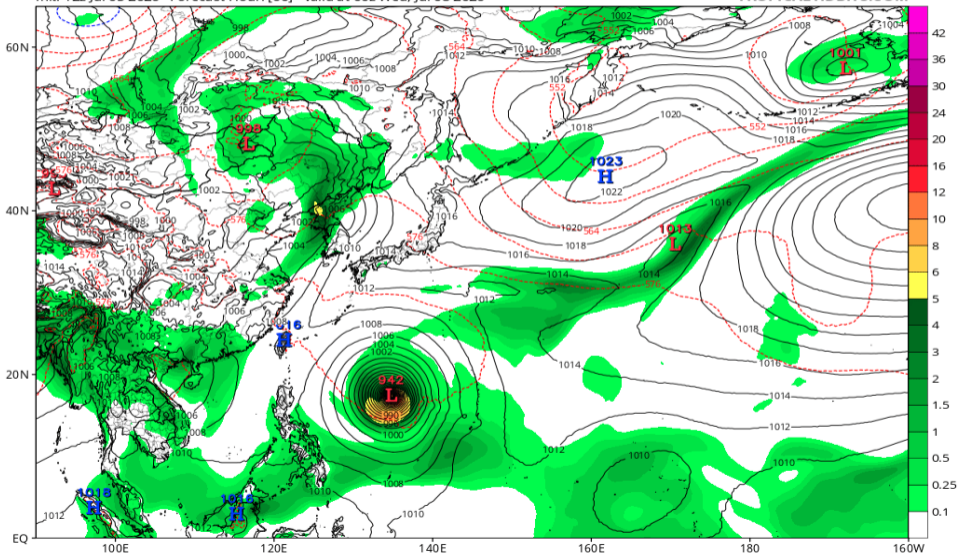


# 地上気圧配置 (AIFS 07/08 00Z 予報)

EC-AIFS 6-hour Averaged Precip Rate (mm/hr), MSLP (hPa) & 1000-500mb Thickness (dam)

Init: 12z Jul 05 2026 Forecast Hour: [60] valid at 00z Wed, Jul 08 2026

TROPICALTIDBITS.COM

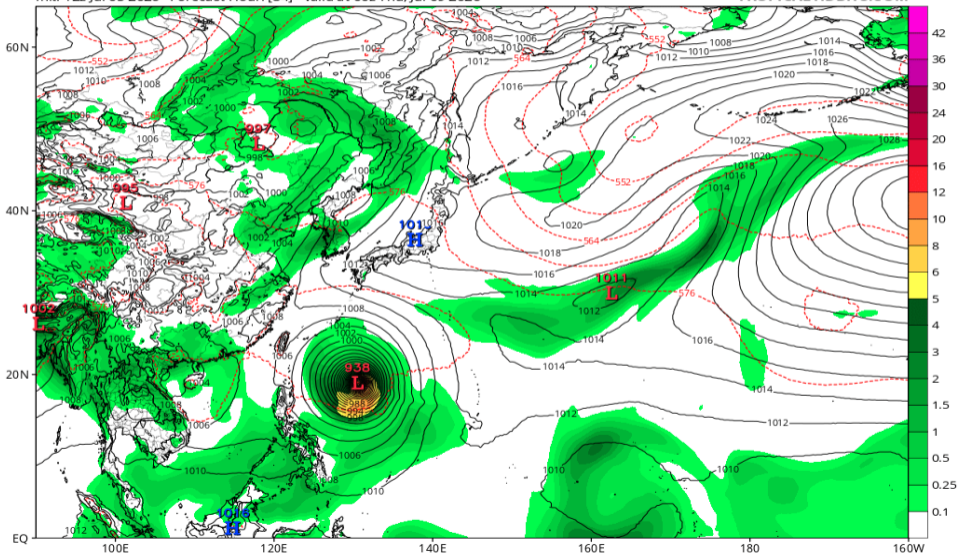


# 地上気圧配置 (AIFS 07/09 00Z 予報)

EC-AIFS 6-hour Averaged Precip Rate (mm/hr), MSLP (hPa) & 1000-500mb Thickness (dam)

Init: 12z Jul 05 2026 Forecast Hour: [84] valid at 00z Thu, Jul 09 2026

TROPICALTIDBITS.COM

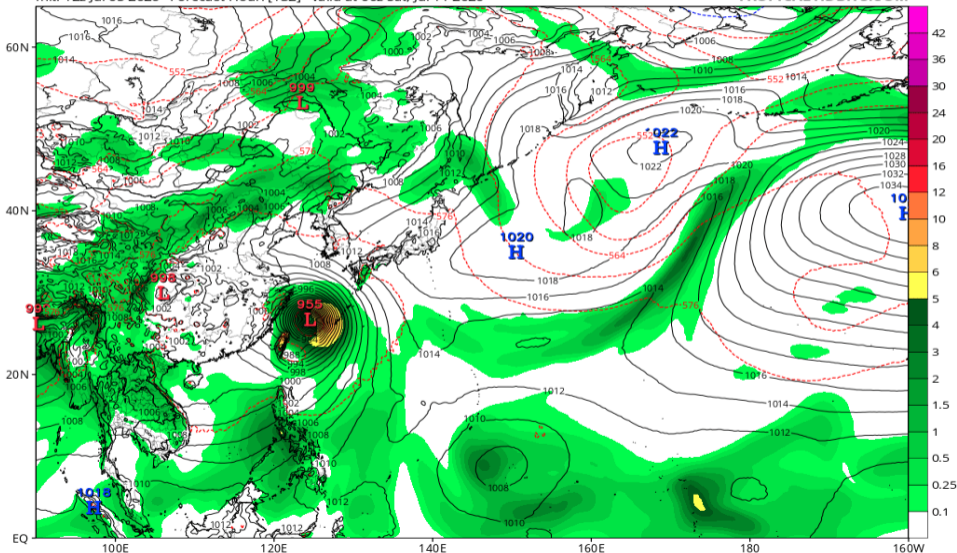


# 地上気圧配置 (AIFS 07/11 00Z 予報)

EC-AIFS 6-hour Averaged Precip Rate (mm/hr), MSLP (hPa) & 1000-500mb Thickness (dam)

Init: 12z Jul 05 2026 Forecast Hour: [132] valid at 00z Sat, Jul 11 2026

TROPICALTIDBITS.COM

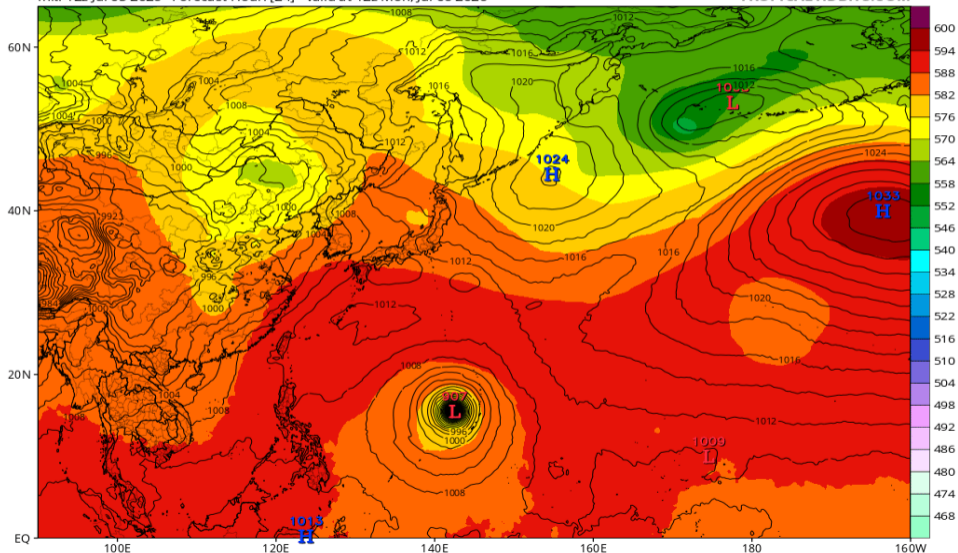


# Z500/地上気圧配置 (GFS 07/06 12Z 予報)

GFS 500mb Geopotential Height (dam) & MSLP (mb)

Init: 12z Jul 05 2026 Forecast Hour: [24] valid at 12z Mon, Jul 06 2026

TROPICALTIDBITS.COM

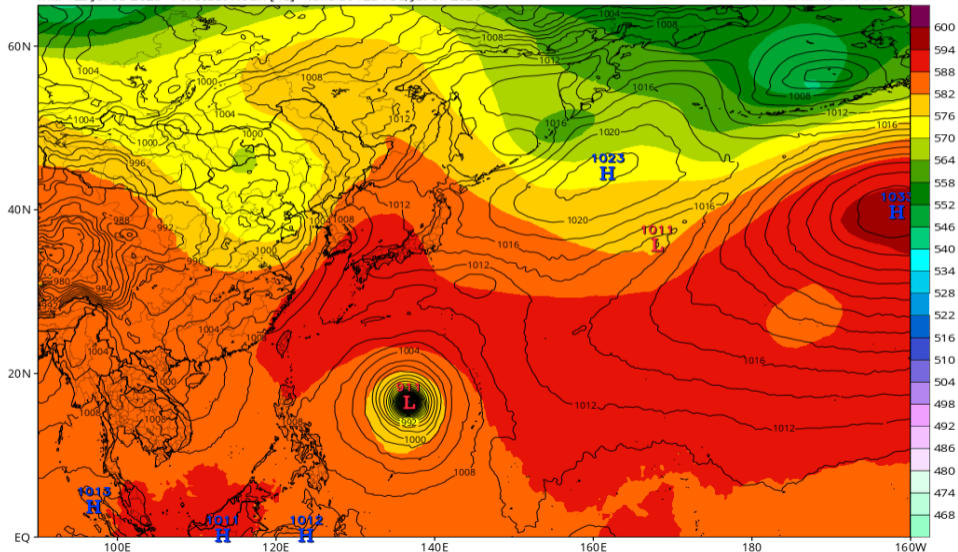


# Z500/地上気圧配置 (GFS 07/07 12Z 予報)

GFS 500mb Geopotential Height (dam) & MSLP (mb)

Init: 12z Jul 05 2026 Forecast Hour: [48] valid at 12z Tue, Jul 07 2026

TROPICALTIDBITS.COM

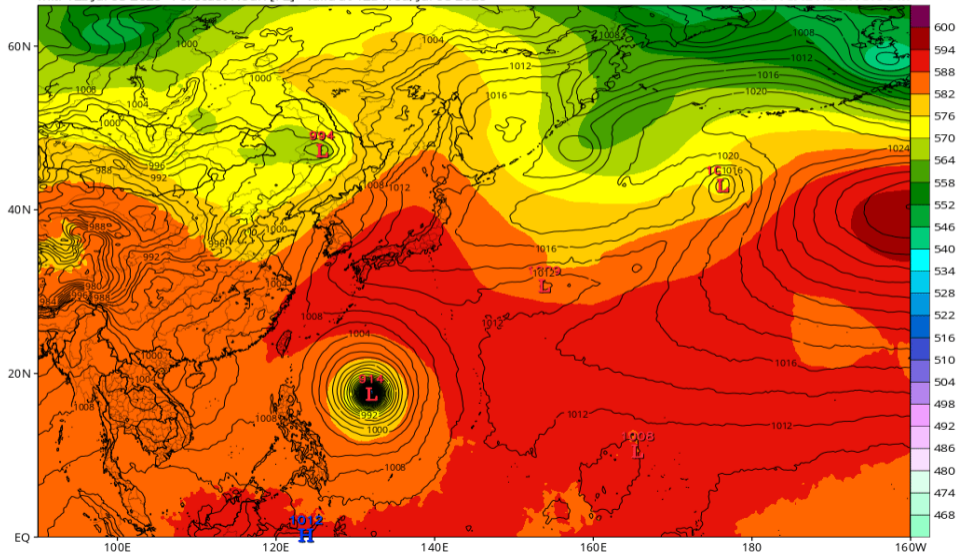


# Z500/地上気圧配置 (GFS 07/08 12Z 予報)

GFS 500mb Geopotential Height (dam) & MSLP (mb)

Init: 12z Jul 05 2026 Forecast Hour: [72] valid at 12z Wed, Jul 08 2026

TROPICALTIDBITS.COM

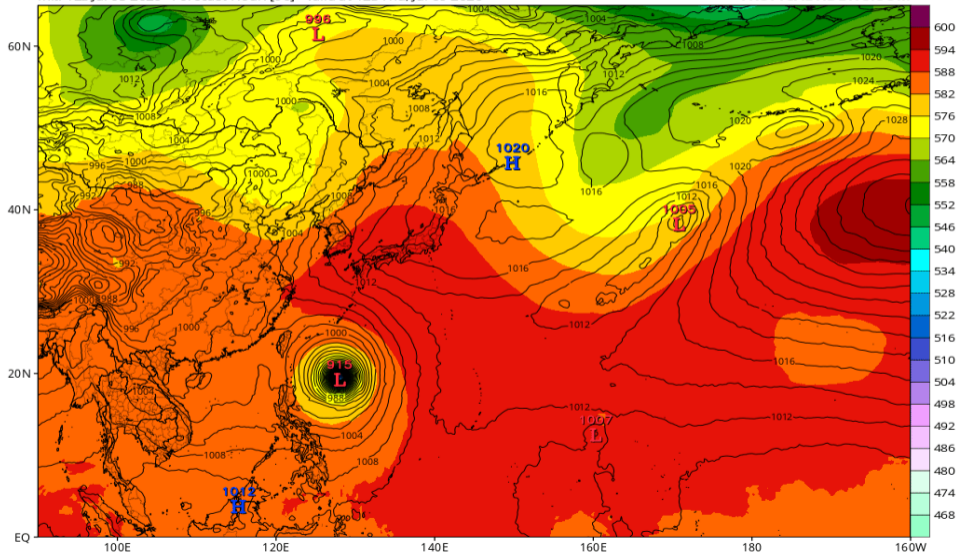


# Z500/地上気圧配置 (GFS 07/09 12Z 予報)

GFS 500mb Geopotential Height (dam) & MSLP (mb)

Init: 12z Jul 05 2026 Forecast Hour: [96] valid at 12z Thu, Jul 09 2026

TROPICALTIDBITS.COM

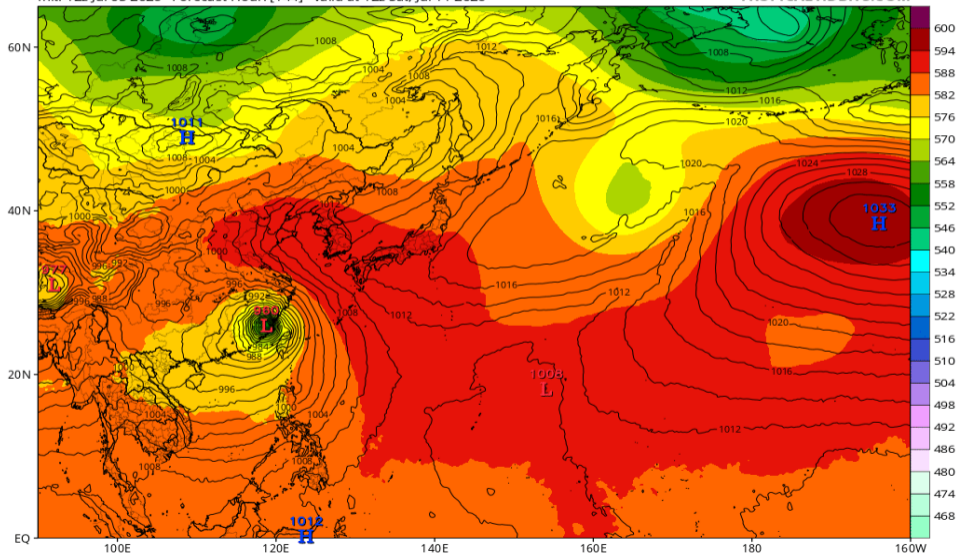


# Z500/地上気圧配置 (GFS 07/11 12Z 予報)

GFS 500mb Geopotential Height (dam) & MSLP (mb)

Init: 12z Jul 05 2026 Forecast Hour: [144] valid at 12z Sat, Jul 11 2026

TROPICALTIDBITS.COM

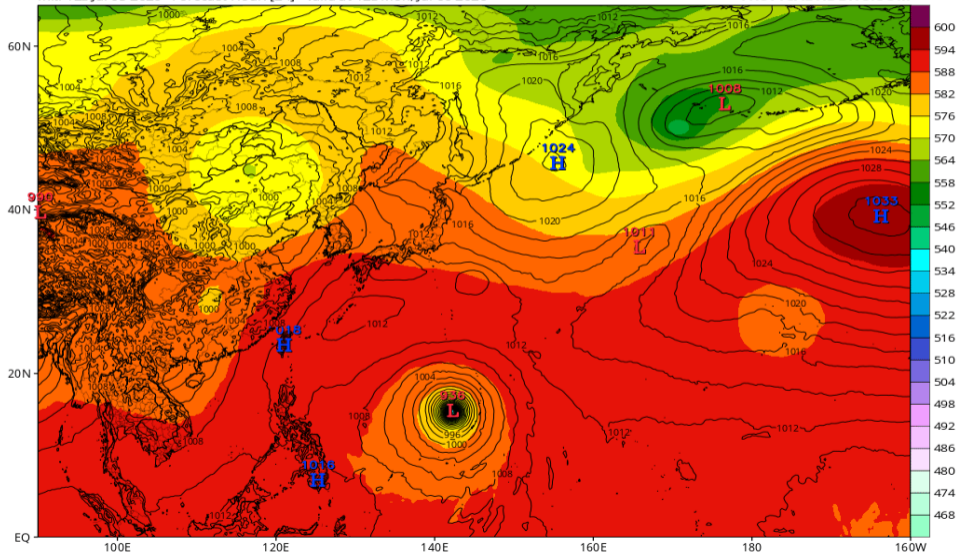


# Z500/地上気圧配置 (ECMWF 07/06 12Z 予報)

ECMWF 500mb Geopotential Height (dam) & MSLP (mb)

Init: 12z Jul 05 2026 Forecast Hour: [24] valid at 12z Mon, Jul 06 2026

TROPICALTIDBITS.COM

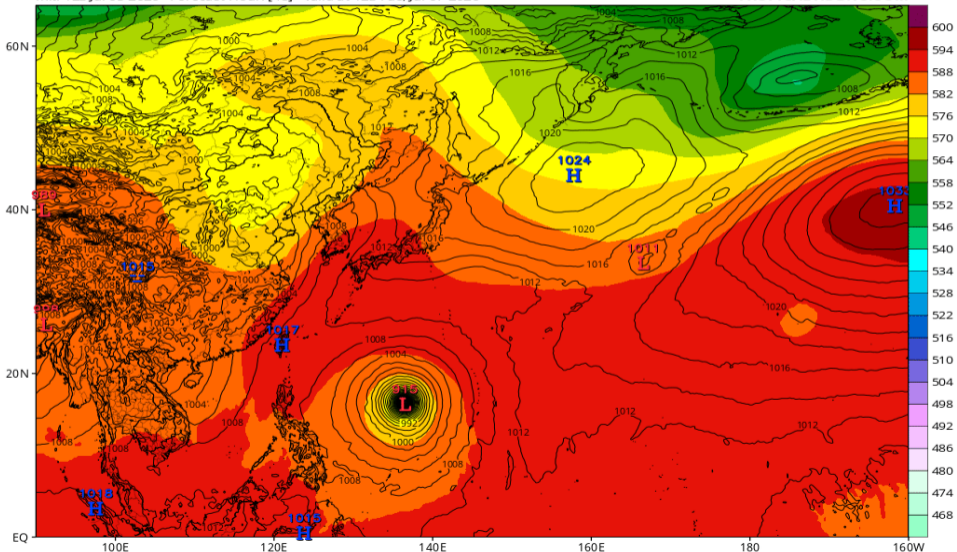


# Z500/地上気圧配置 (ECMWF 07/07 12Z 予報)

ECMWF 500mb Geopotential Height (dam) & MSLP (mb)

Init: 12z Jul 05 2026 Forecast Hour: [48] valid at 12z Tue, Jul 07 2026

TROPICALTIDBITS.COM

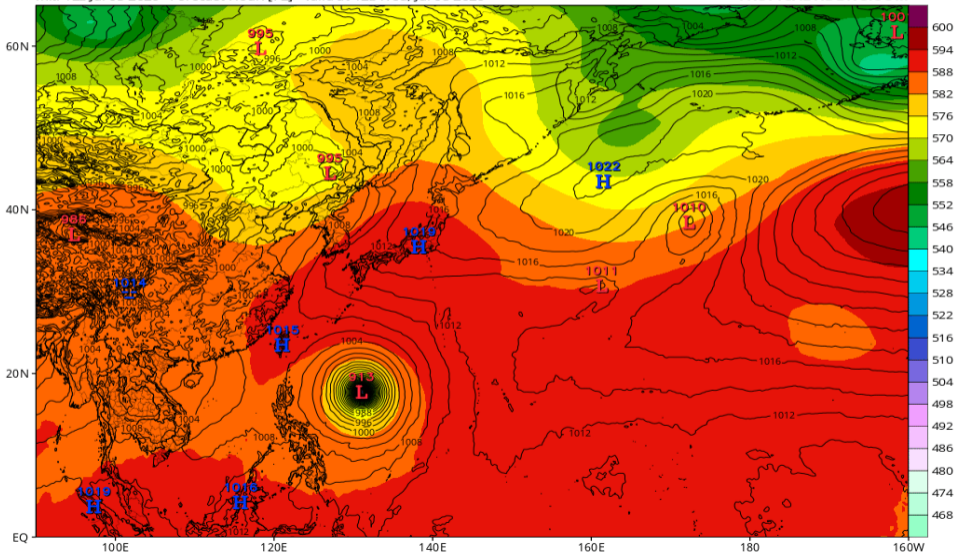


# Z500/地上気圧配置 (ECMWF 07/08 12Z 予報)

ECMWF 500mb Geopotential Height (dam) & MSLP (mb)

Init: 12z Jul 05 2026 Forecast Hour: [72] valid at 12z Wed, Jul 08 2026

TROPICALTIDBITS.COM

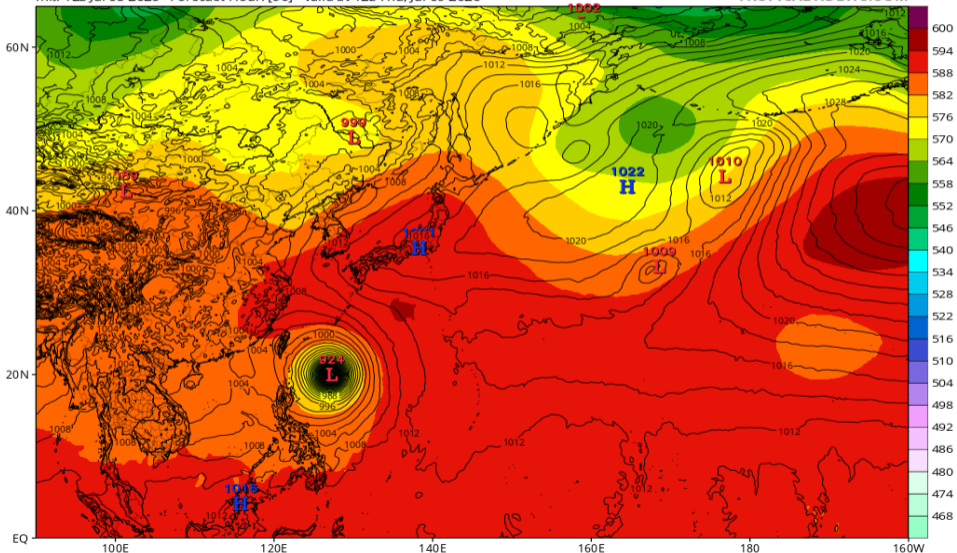


# Z500/地上気圧配置 (ECMWF 07/09 12Z 予報)

ECMWF 500mb Geopotential Height (dam) & MSLP (mb)

Init: 12z Jul 05 2026 Forecast Hour: [96] valid at 12z Thu, Jul 09 2026

TROPICALTIDBITS.COM

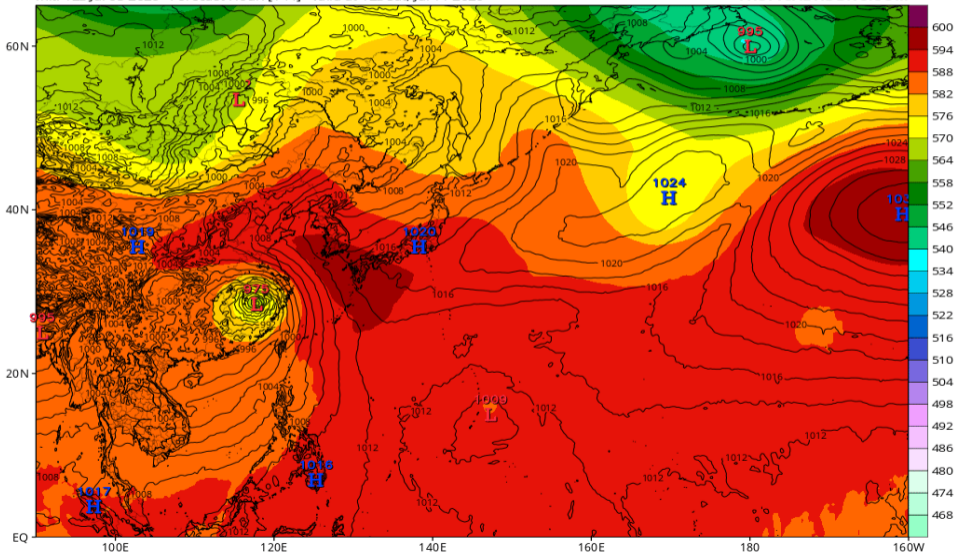


# Z500/地上気圧配置 (ECMWF 07/11 12Z 予報)

ECMWF 500mb Geopotential Height (dam) & MSLP (mb)

Init: 12z Jul 05 2026 Forecast Hour: [144] valid at 12z Sat, Jul 11 2026

TROPICALTIDBITS.COM

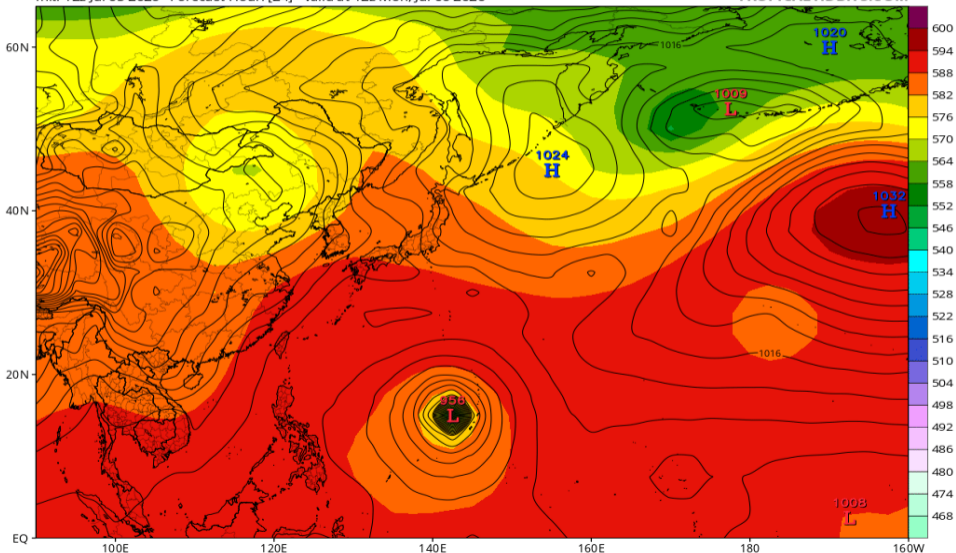


# Z500/地上気圧配置 (JMA-GSM 07/06 12Z 予報)

JMA 500mb Geopotential Height (dam) & MSLP (mb)

Init: 12z Jul 05 2026 Forecast Hour: [24] valid at 12z Mon, Jul 06 2026

TROPICALTIDBITS.COM

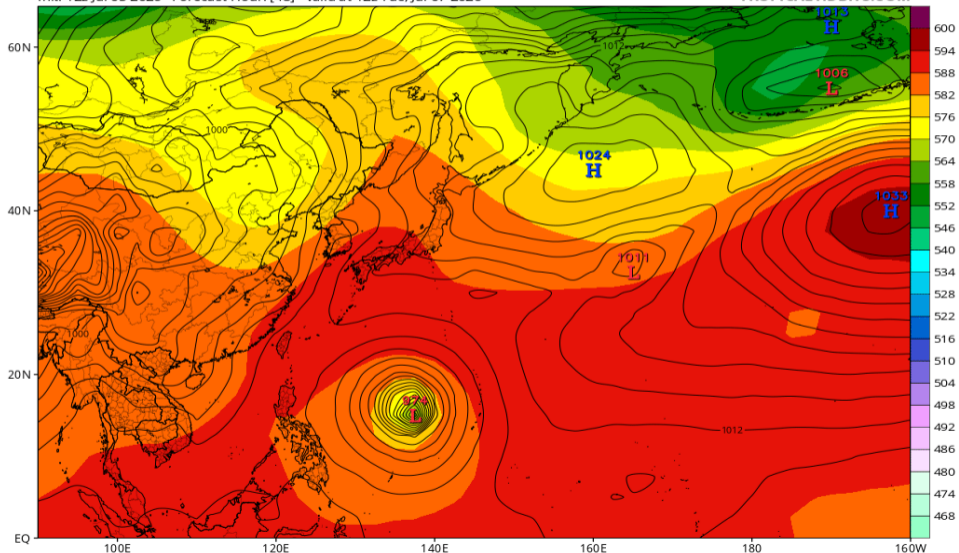


# Z500/地上気圧配置 (JMA-GSM 07/07 12Z 予報)

JMA 500mb Geopotential Height (dam) & MSLP (mb)

Init: 12z Jul 05 2026 Forecast Hour: [48] valid at 12z Tue, Jul 07 2026

TROPICALTIDBITS.COM

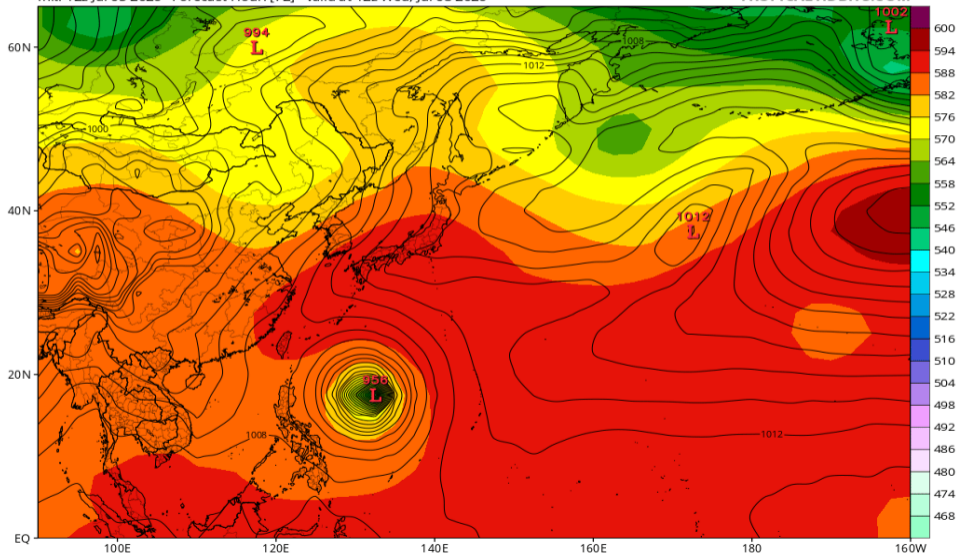


# Z500/地上気圧配置 (JMA-GSM 07/08 12Z 予報)

JMA 500mb Geopotential Height (dam) & MSLP (mb)

Init: 12z Jul 05 2026 Forecast Hour: [72] valid at 12z Wed, Jul 08 2026

TROPICALTIDBITS.COM

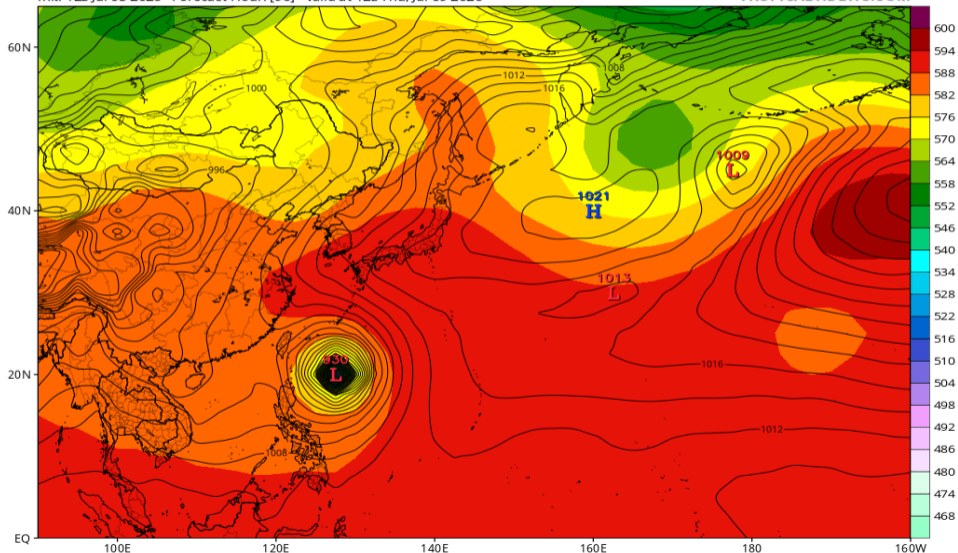


# Z500/地上気圧配置 (JMA-GSM 07/09 12Z 予報)

JMA 500mb Geopotential Height (dam) & MSLP (mb)

Init: 12z Jul 05 2026 Forecast Hour: [96] valid at 12z Thu, Jul 09 2026

TROPICALTIDBITS.COM

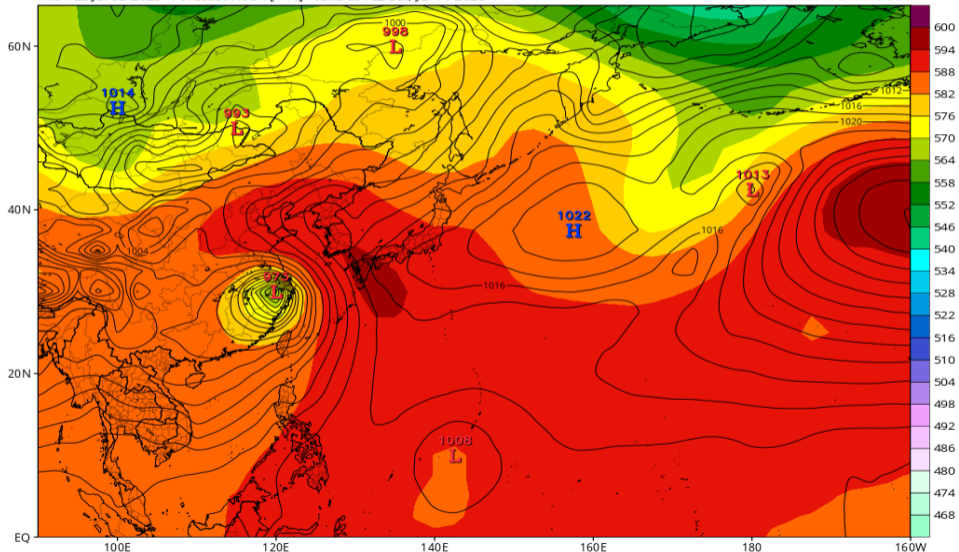


# Z500/地上気圧配置 (JMA-GSM 07/11 12Z 予報)

JMA 500mb Geopotential Height (dam) & MSLP (mb)

Init: 12z Jul 05 2026 Forecast Hour: [144] valid at 12z Sat, Jul 11 2026

TROPICALTIDBITS.COM

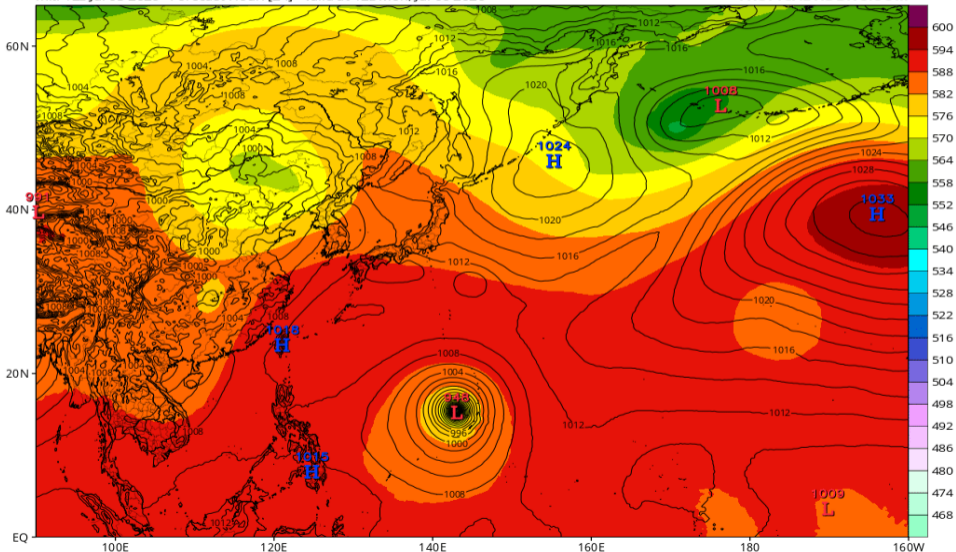


# Z500/地上気圧配置 (AIFS 07/06 12Z 予報)

EC-AIFS 500mb Geopotential Height (dam) & MSLP (mb)

Init: 12z Jul 05 2026 Forecast Hour: [24] valid at 12z Mon, Jul 06 2026

TROPICALTIDBITS.COM

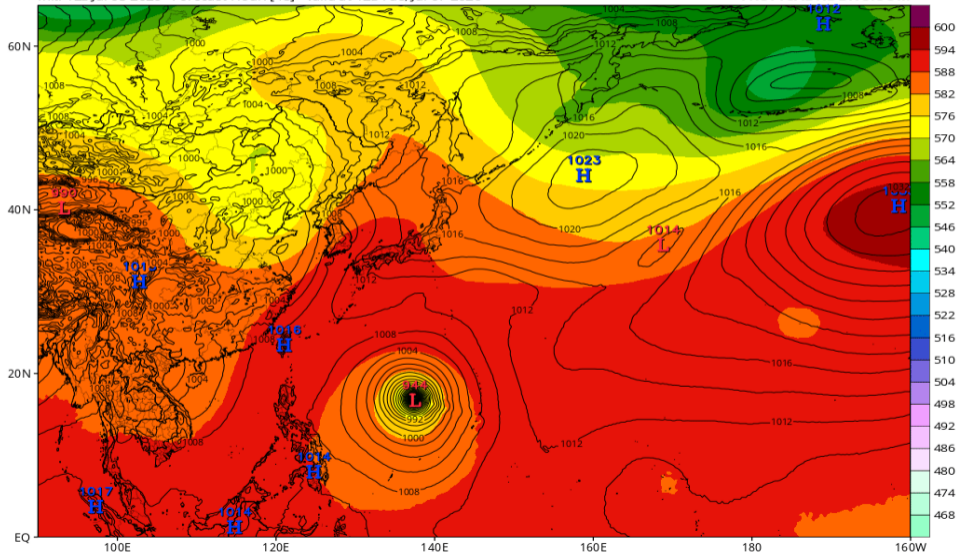


# Z500/地上気圧配置 (AIFS 07/07 12Z 予報)

EC-AIFS 500mb Geopotential Height (dam) & MSLP (mb)

Init: 12z Jul 05 2026 Forecast Hour: [48] valid at 12z Tue, Jul 07 2026

TROPICALTIDBITS.COM

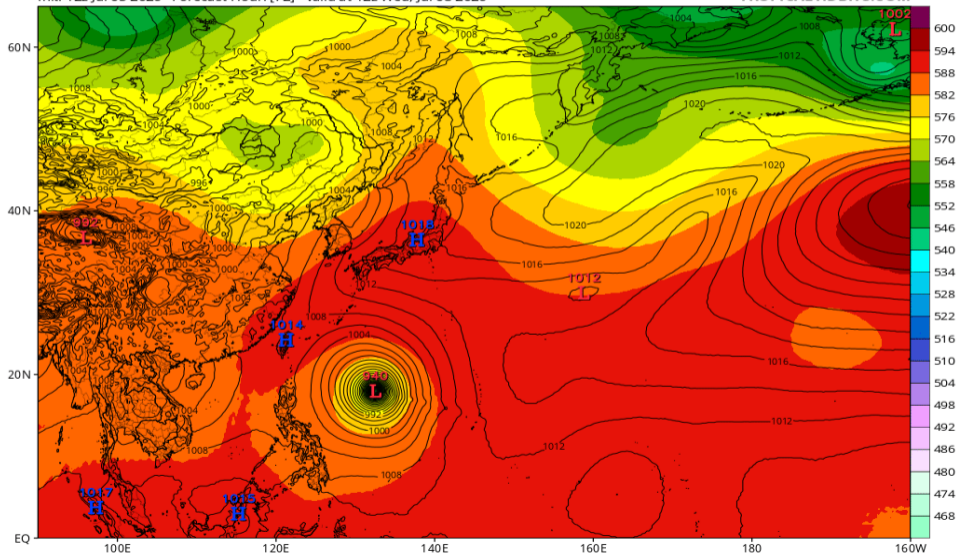


# Z500/地上気圧配置 (AIFS 07/08 12Z 予報)

EC-AIFS 500mb Geopotential Height (dam) & MSLP (mb)

Init: 12z Jul 05 2026 Forecast Hour: [72] valid at 12z Wed, Jul 08 2026

TROPICALTIDBITS.COM

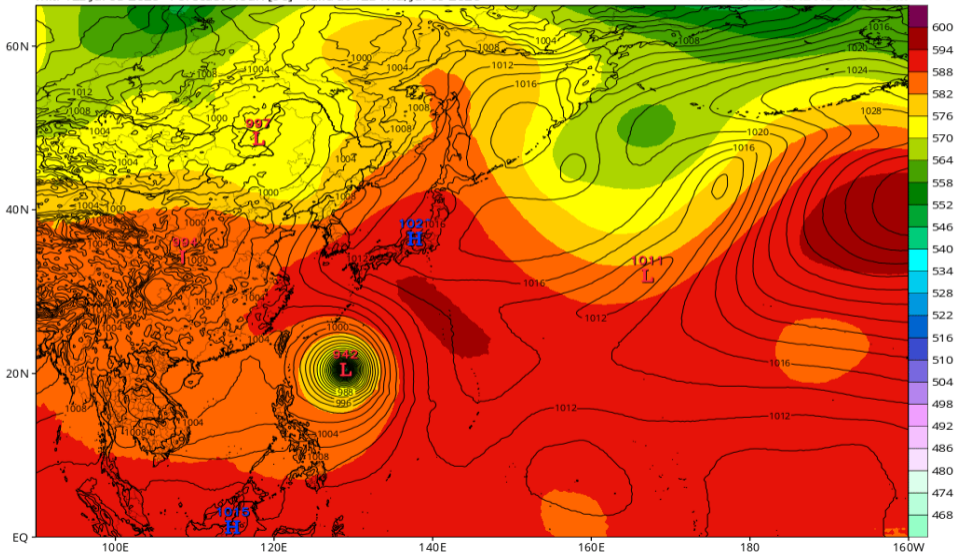


# Z500/地上気圧配置 (AIFS 07/09 12Z 予報)

EC-AIFS 500mb Geopotential Height (dam) & MSLP (mb)

Init: 12z Jul 05 2026 Forecast Hour: [96] valid at 12z Thu, Jul 09 2026

TROPICALTIDBITS.COM

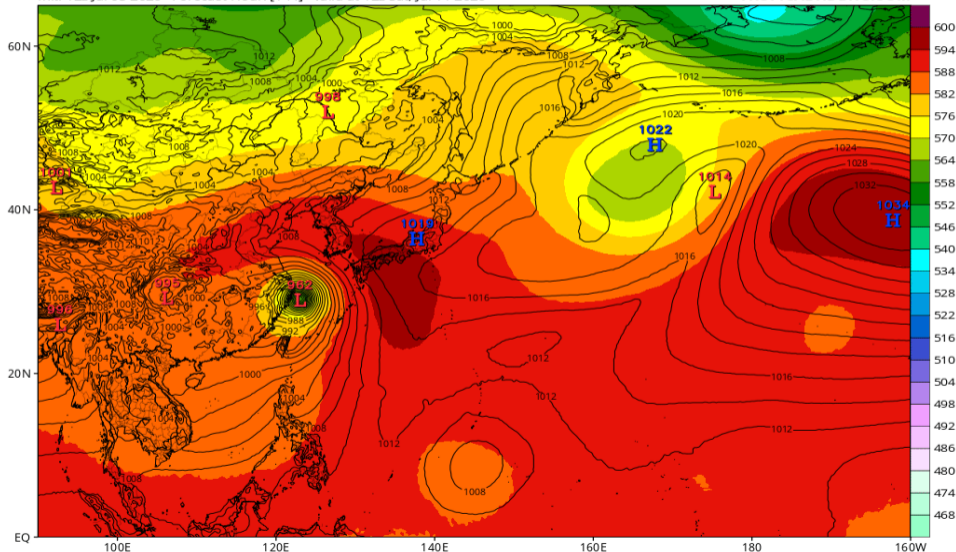


# Z500/地上気圧配置 (AIFS 07/11 12Z 予報)

EC-AIFS 500mb Geopotential Height (dam) & MSLP (mb)

Init: 12z Jul 05 2026 Forecast Hour: [144] valid at 12z Sat, Jul 11 2026

TROPICALTIDBITS.COM

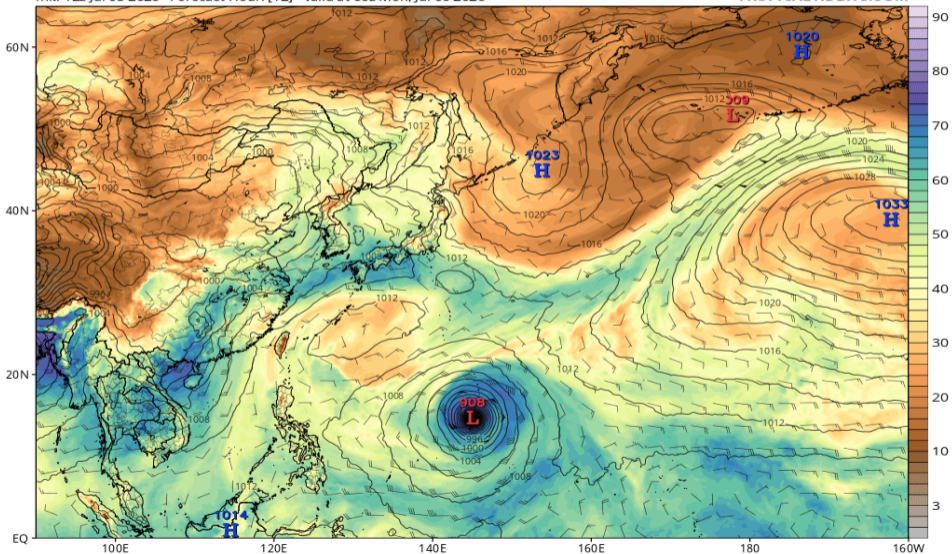


# 可降水量 (GFS 07/06 00Z 予報)

GFS MSLP (mb), Total Precipitable Water (mm), and 850mb Wind (kt)

Init: 12z Jul 05 2026 Forecast Hour: [12] valid at 00z Mon, Jul 06 2026

TROPICALTIDBITS.COM

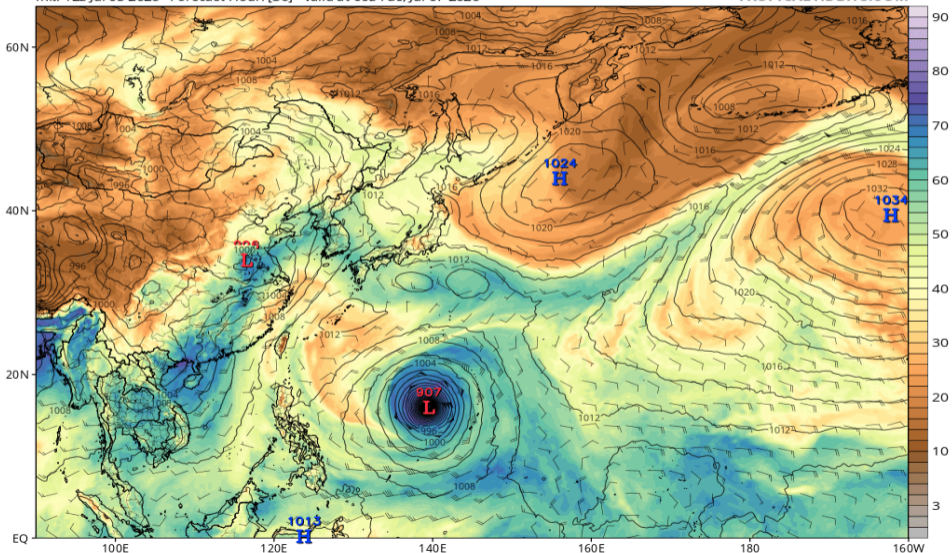


# 可降水量 (GFS 07/07 00Z 予報)

GFS MSLP (mb), Total Precipitable Water (mm), and 850mb Wind (kt)

Init: 12z Jul 05 2026 Forecast Hour: [36] valid at 00z Tue, Jul 07 2026

TROPICALTIDBITS.COM

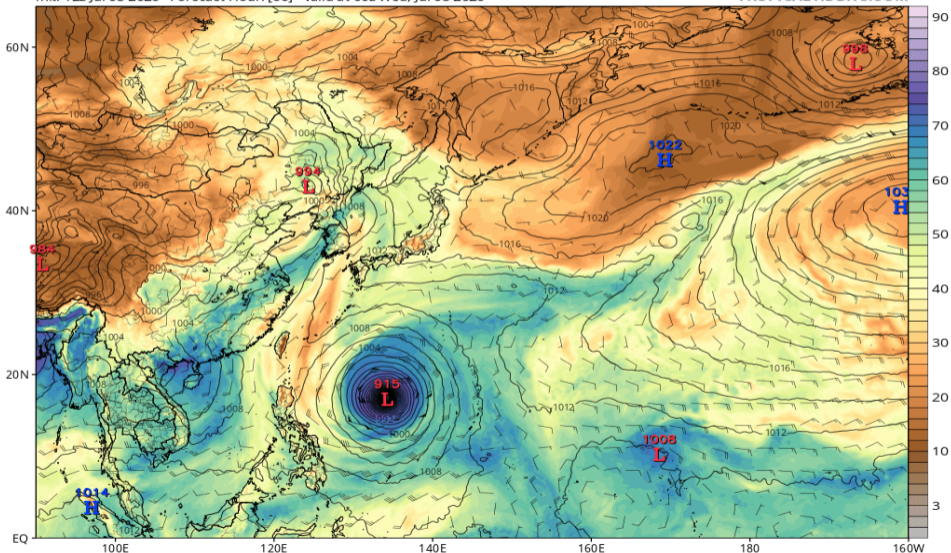


# 可降水量 (GFS 07/08 00Z 予報)

GFS MSLP (mb), Total Precipitable Water (mm), and 850mb Wind (kt)

Init: 12z Jul 05 2026 Forecast Hour: [60] valid at 00z Wed, Jul 08 2026

TROPICALTIDBITS.COM

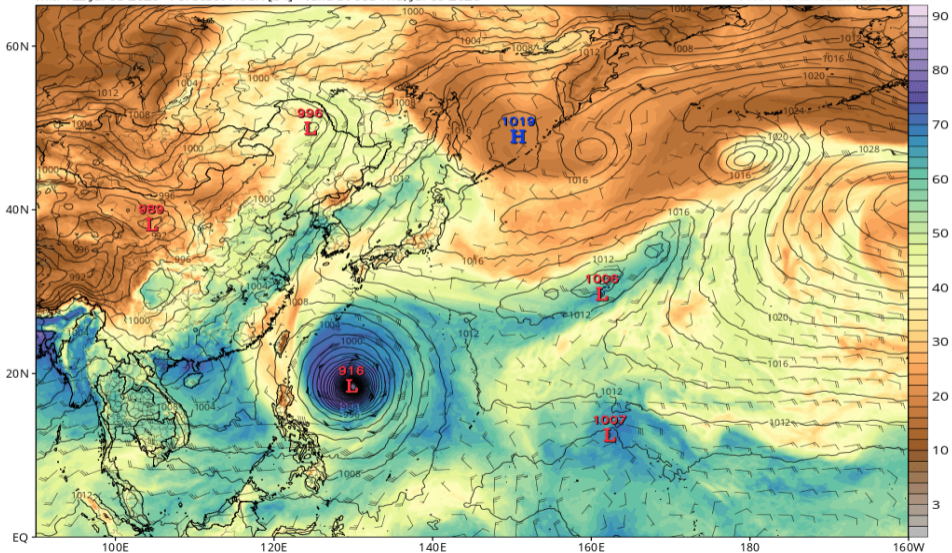


# 可降水量 (GFS 07/09 00Z 予報)

GFS MSLP (mb), Total Precipitable Water (mm), and 850mb Wind (kt)

Init: 12z Jul 05 2026 Forecast Hour: [84] valid at 00z Thu, Jul 09 2026

TROPICALTIDBITS.COM

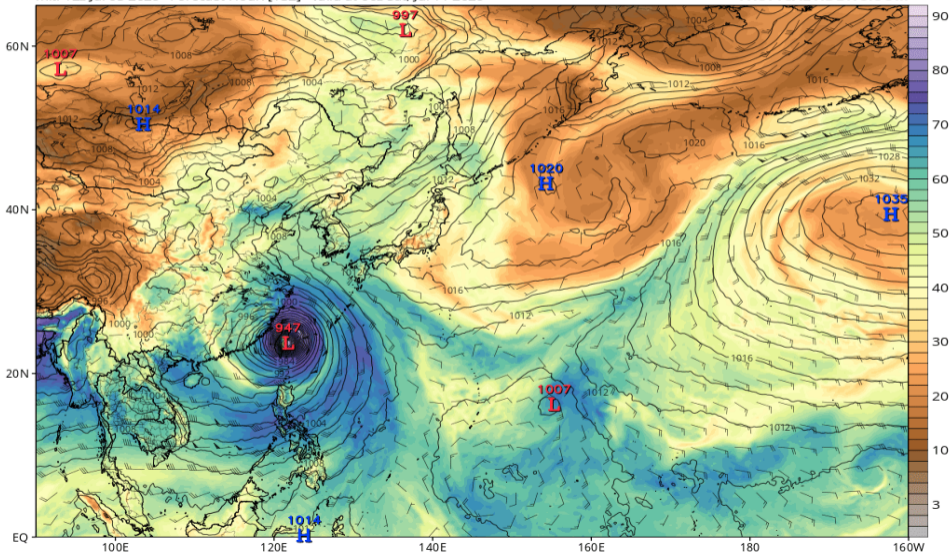


# 可降水量 (GFS 07/11 00Z 予報)

GFS MSLP (mb), Total Precipitable Water (mm), and 850mb Wind (kt)

Init: 12z Jul 05 2026 Forecast Hour: [132] valid at 00z Sat, Jul 11 2026

TROPICALTIDBITS.COM

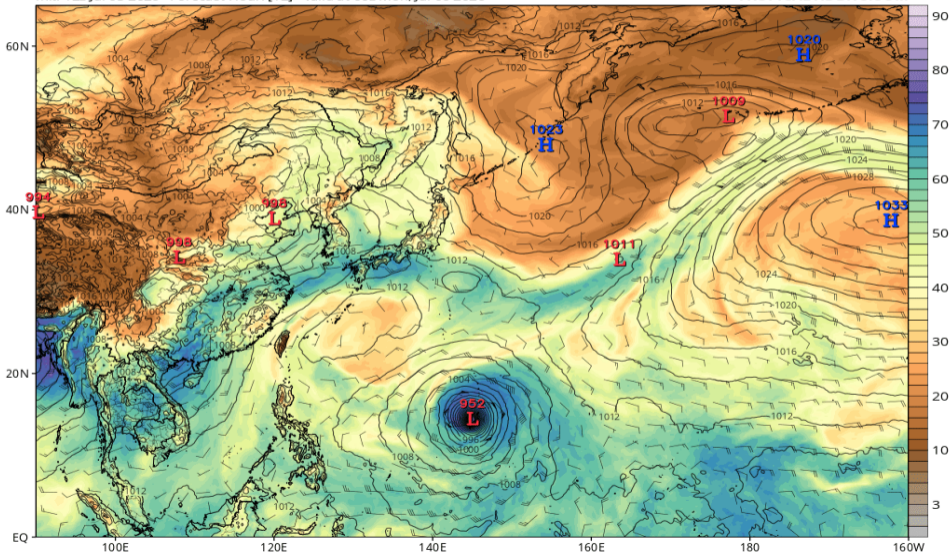


# 可降水量 (ECMWF 07/06 00Z 予報)

ECMWF MSLP (mb), Total Precipitable Water (mm), and 850mb Wind (kt)

Init: 12z Jul 05 2026 Forecast Hour: [12] valid at 00z Mon, Jul 06 2026

TROPICALTIDBITS.COM

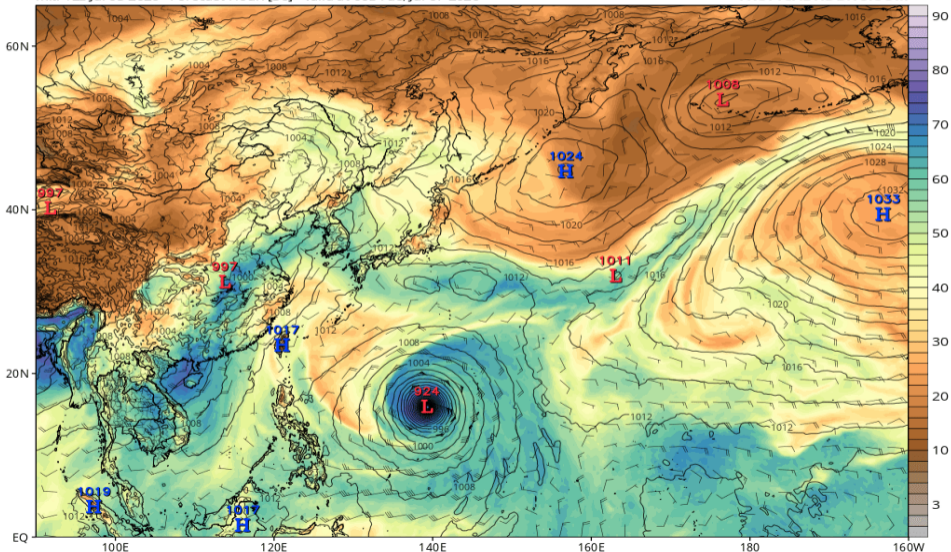


# 可降水量 (ECMWF 07/07 00Z 予報)

ECMWF MSLP (mb), Total Precipitable Water (mm), and 850mb Wind (kt)

Init: 12z Jul 05 2026 Forecast Hour: [36] valid at 00z Tue, Jul 07 2026

TROPICALTIDBITS.COM

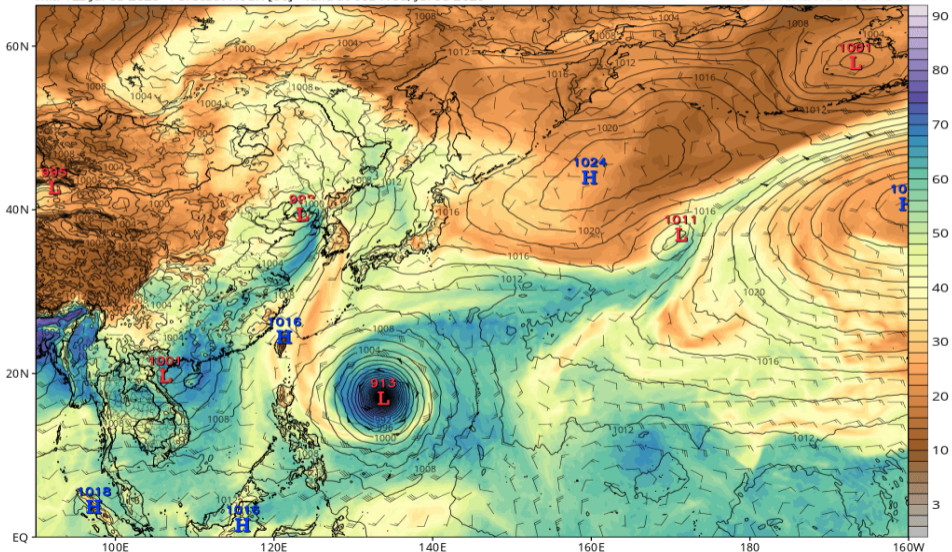


# 可降水量 (ECMWF 07/08 00Z 予報)

ECMWF MSLP (mb), Total Precipitable Water (mm), and 850mb Wind (kt)

Init: 12z Jul 05 2026 Forecast Hour: [60] valid at 00z Wed, Jul 08 2026

TROPICALTIDBITS.COM

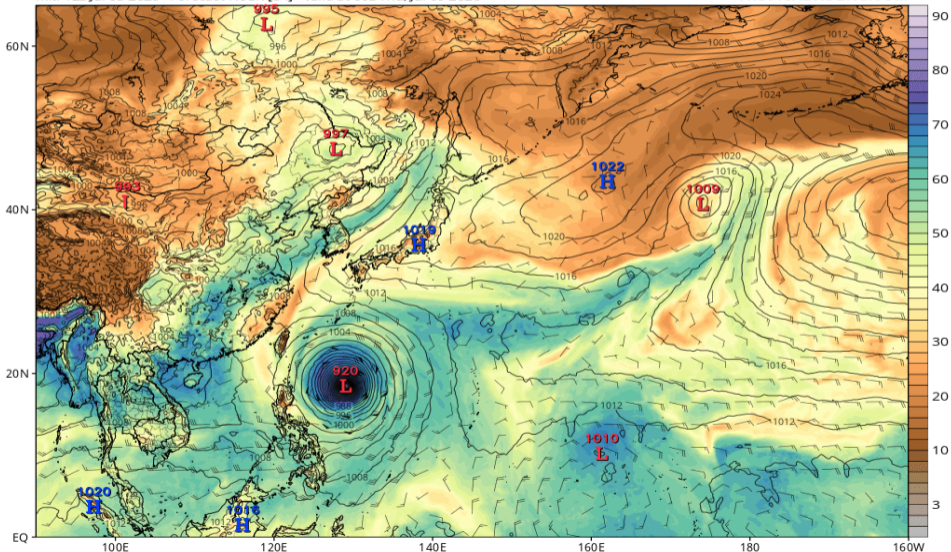


# 可降水量 (ECMWF 07/09 00Z 予報)

ECMWF MSLP (mb), Total Precipitable Water (mm), and 850mb Wind (kt)

Init: 12z Jul 05 2026 Forecast Hour: [84] valid at 00z Thu, Jul 09 2026

TROPICALTIDBITS.COM

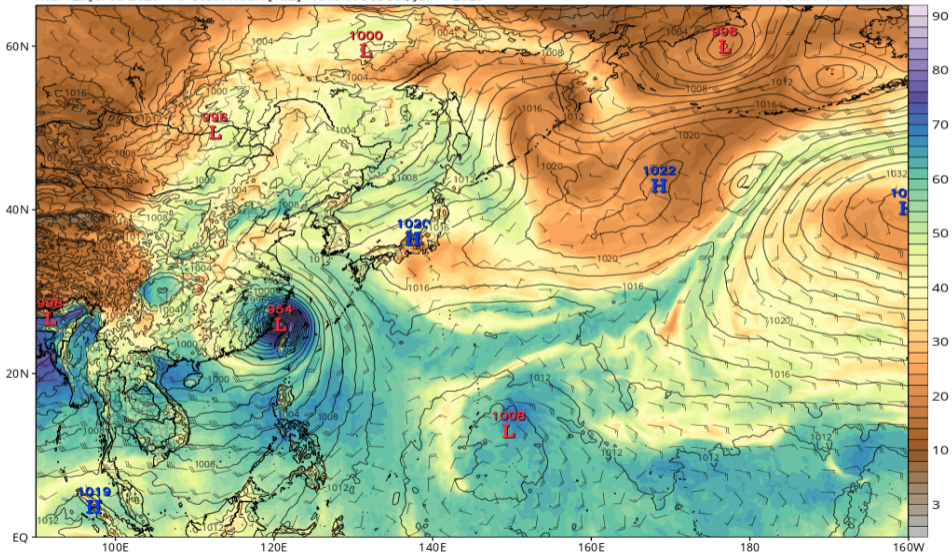


# 可降水量 (ECMWF 07/11 00Z 予報)

ECMWF MSLP (mb), Total Precipitable Water (mm), and 850mb Wind (kt)

Init: 12z Jul 05 2026 Forecast Hour: [132] valid at 00z Sat, Jul 11 2026

TROPICALTIDBITS.COM

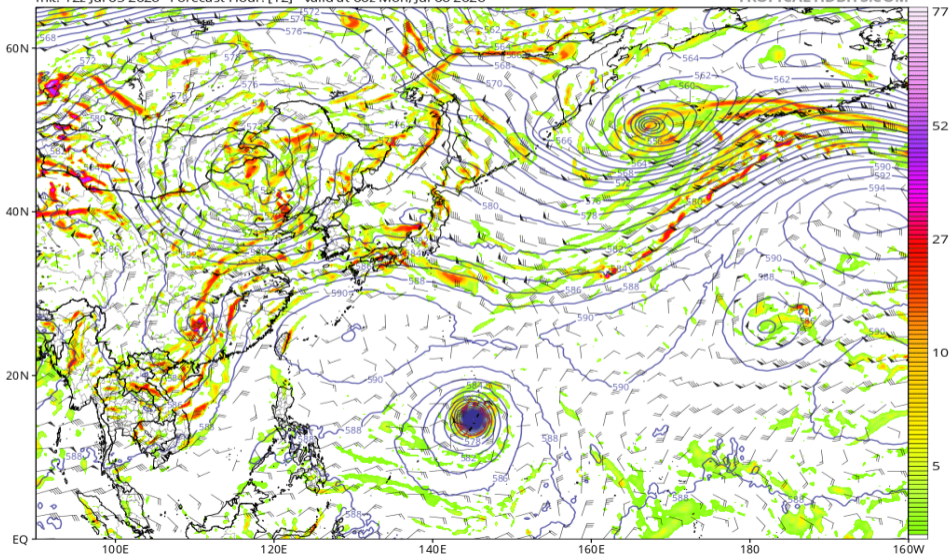


# 渦度 850, Z500, UV200 (GFS 07/06 00Z 予報)

GFS 850 hPa Cyclonic Vorticity ( $10^5 \text{ s}^{-1}$ ), 500 hPa Height (dam), and 200 hPa Wind (kt)

Init: 12z Jul 05 2026 Forecast Hour: [12] valid at 00z Mon, Jul 06 2026

TROPICALTIDBITS.COM

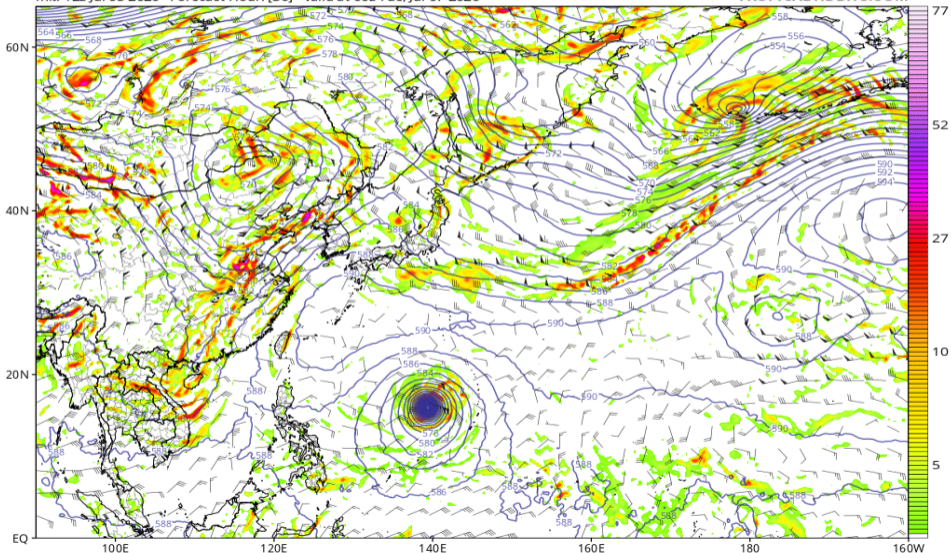


# 渦度 850, Z500, UV200 (GFS 07/07 00Z 予報)

GFS 850 hPa Cyclonic Vorticity ( $10^5 \text{ s}^{-1}$ ), 500 hPa Height (dam), and 200 hPa Wind (kt)

Init: 12z Jul 05 2026 Forecast Hour: [36] valid at 00z Tue, Jul 07 2026

TROPICALTIDBITS.COM

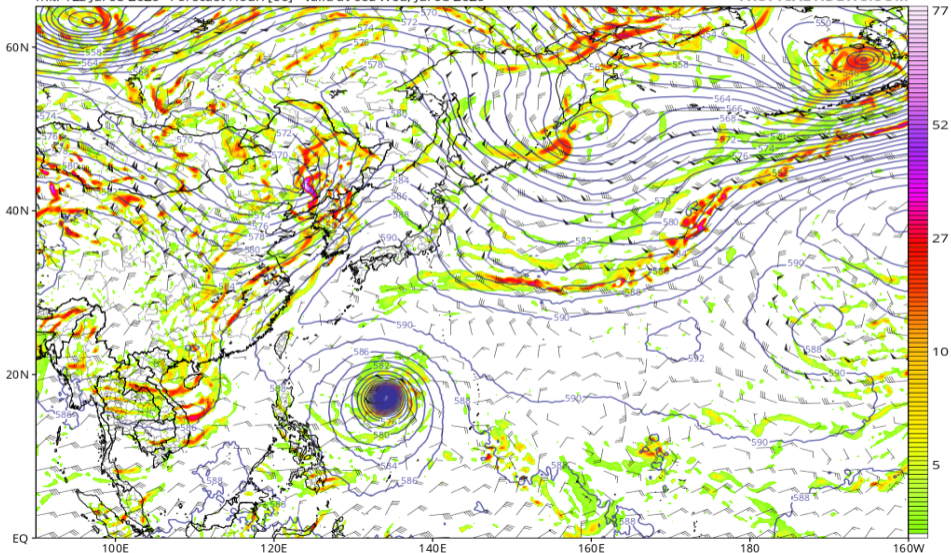


# 渦度 850, Z500, UV200 (GFS 07/08 00Z 予報)

GFS 850 hPa Cyclonic Vorticity ( $10^5 \text{ s}^{-1}$ ), 500 hPa Height (dam), and 200 hPa Wind (kt)

Init: 12z Jul 05 2026 Forecast Hour: [60] valid at 00z Wed, Jul 08 2026

TROPICALTIDBITS.COM

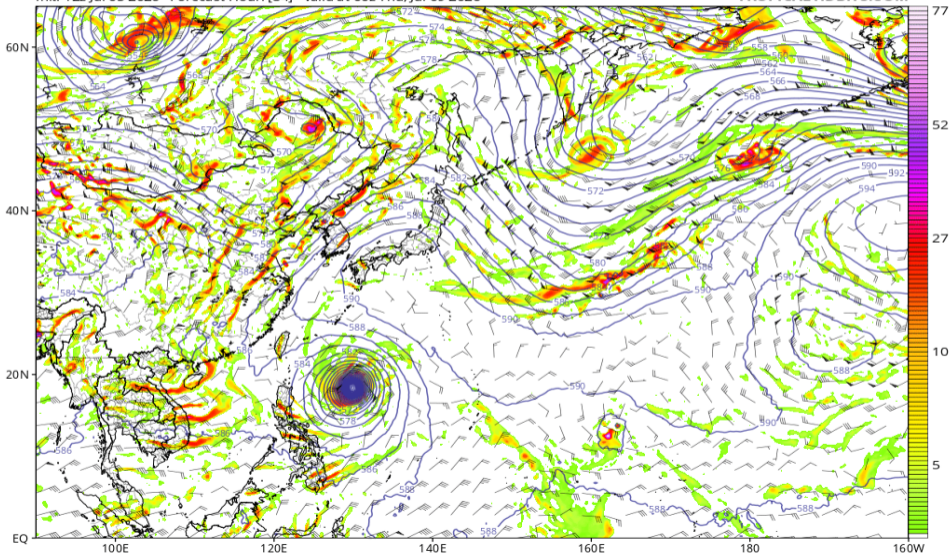


# 渦度 850, Z500, UV200 (GFS 07/09 00Z 予報)

GFS 850 hPa Cyclonic Vorticity ( $10^5 \text{ s}^{-1}$ ), 500 hPa Height (dam), and 200 hPa Wind (kt)

Init: 12z Jul 05 2026 Forecast Hour: [84] valid at 00z Thu, Jul 09 2026

TROPICALTIDBITS.COM

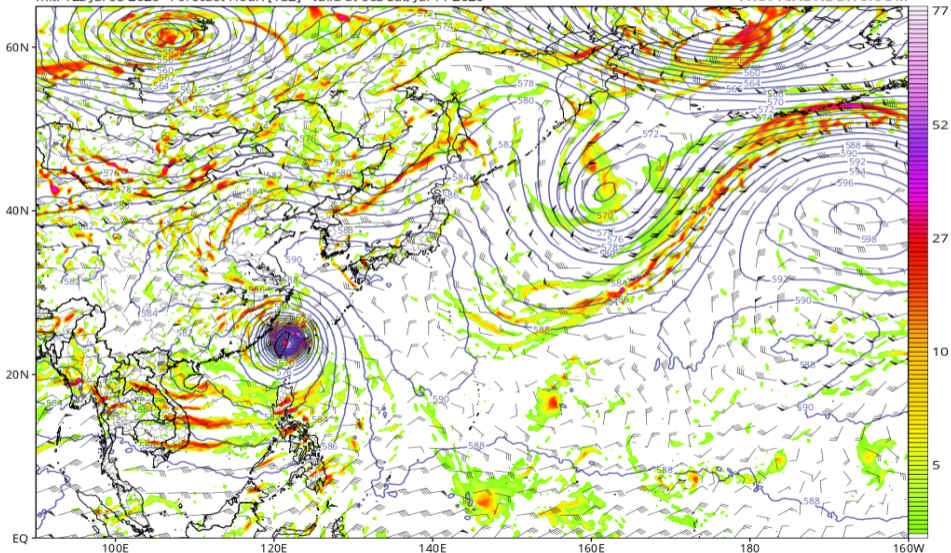


# 渦度 850, Z500, UV200 (GFS 07/11 00Z 予報)

GFS 850 hPa Cyclonic Vorticity ( $10^5 \text{ s}^{-1}$ ), 500 hPa Height (dam), and 200 hPa Wind (kt)

Init: 12z Jul 05 2026 Forecast Hour: [132] valid at 00z Sat, Jul 11 2026

TROPICALTIDBITS.COM

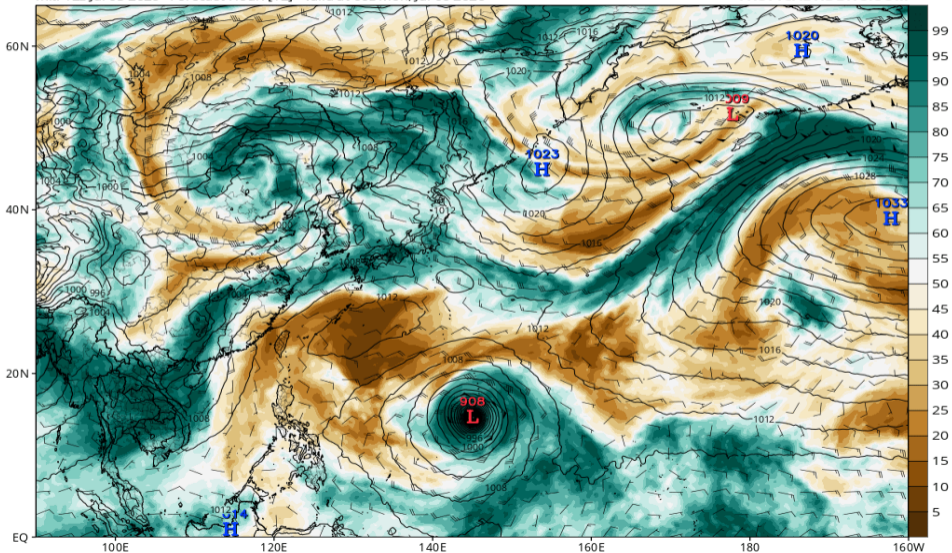


# RH700-300 (GFS 07/06 00Z 予報)

GFS MSLP (mb), 700-300 hPa Relative Humidity (%), and 700-300 hPa Wind (kt)

Init: 12z Jul 05 2026 Forecast Hour: [12] valid at 00z Mon, Jul 06 2026

TROPICALTIDBITS.COM

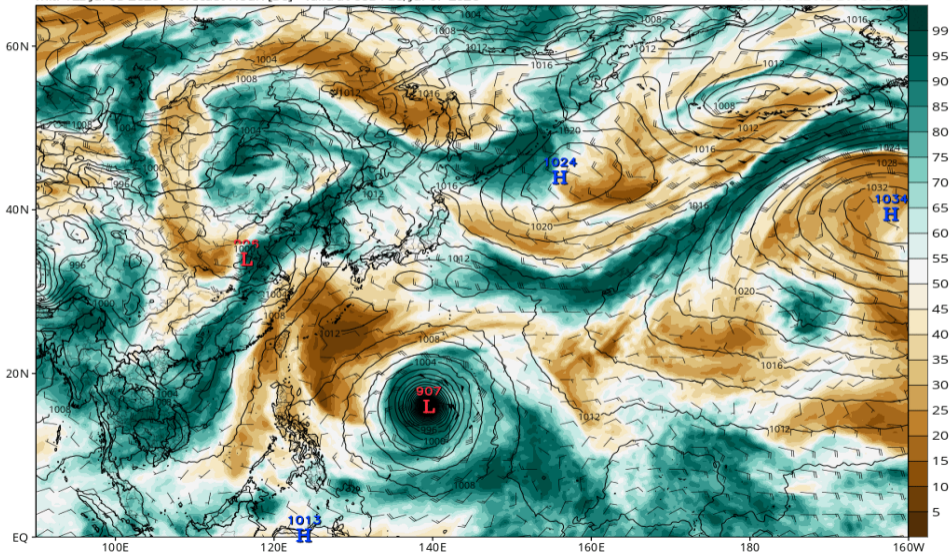


# RH700-300 (GFS 07/07 00Z 予報)

GFS MSLP (mb), 700-300 hPa Relative Humidity (%), and 700-300 hPa Wind (kt)

Init: 12z Jul 05 2026 Forecast Hour: [36] valid at 00z Tue, Jul 07 2026

TROPICALTIDBITS.COM

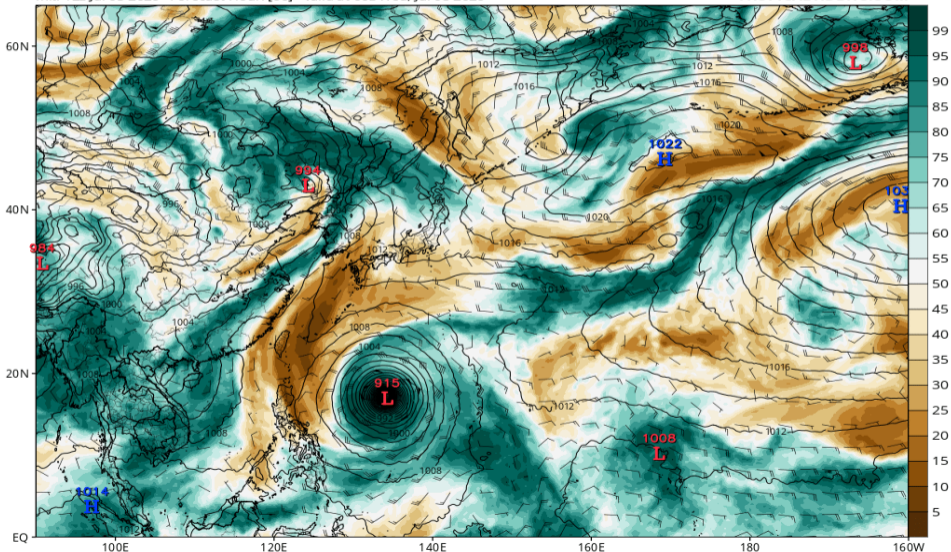


# RH700-300 (GFS 07/08 00Z 予報)

GFS MSLP (mb), 700-300 hPa Relative Humidity (%), and 700-300 hPa Wind (kt)

Init: 12z Jul 05 2026 Forecast Hour: [60] valid at 00z Wed, Jul 08 2026

TROPICALTIDBITS.COM

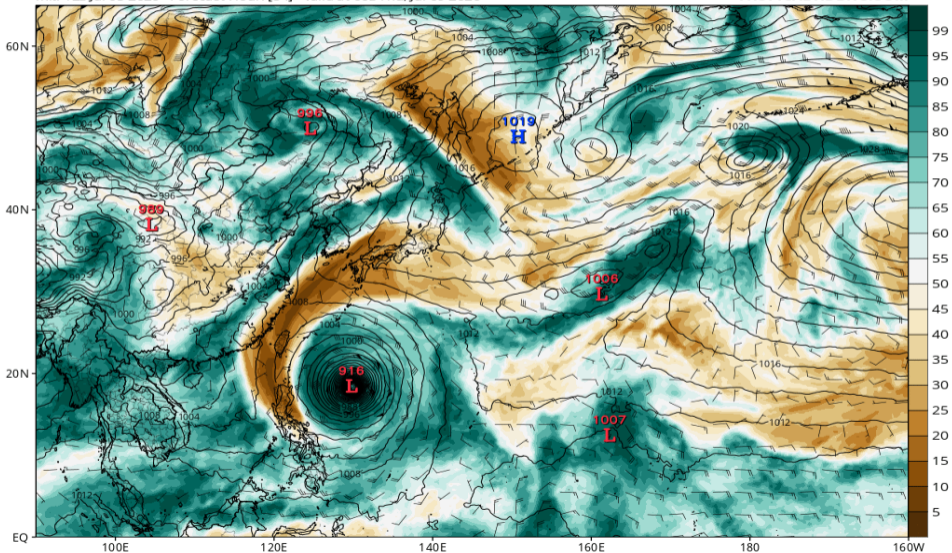


# RH700-300 (GFS 07/09 00Z 予報)

GFS MSLP (mb), 700-300 hPa Relative Humidity (%), and 700-300 hPa Wind (kt)

Init: 12z Jul 05 2026 Forecast Hour: [84] valid at 00z Thu, Jul 09 2026

TROPICALTIDBITS.COM

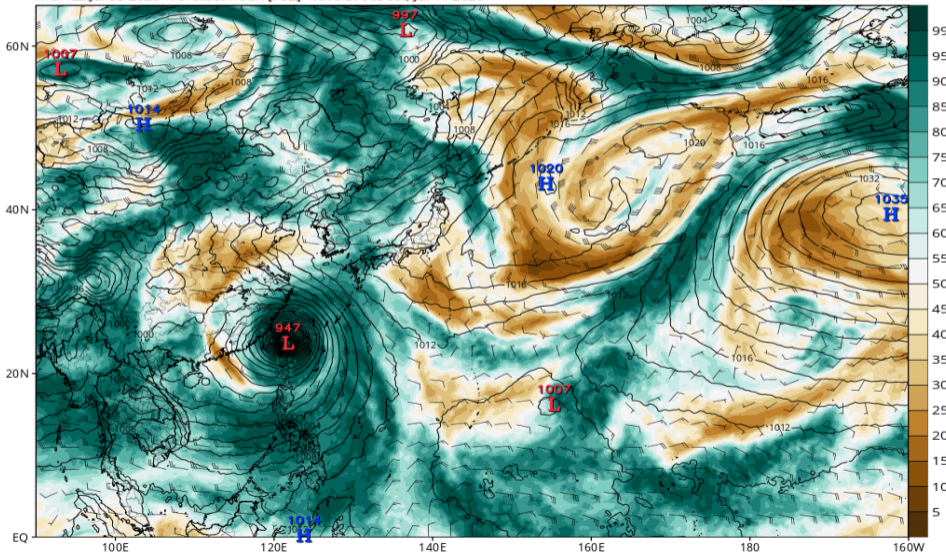


# RH700-300 (GFS 07/11 00Z 予報)

GFS MSLP (mb), 700-300 hPa Relative Humidity (%), and 700-300 hPa Wind (kt)

Init: 12z Jul 05 2026 Forecast Hour: [132] valid at 00z Sat, Jul 11 2026

TROPICALTIDBITS.COM

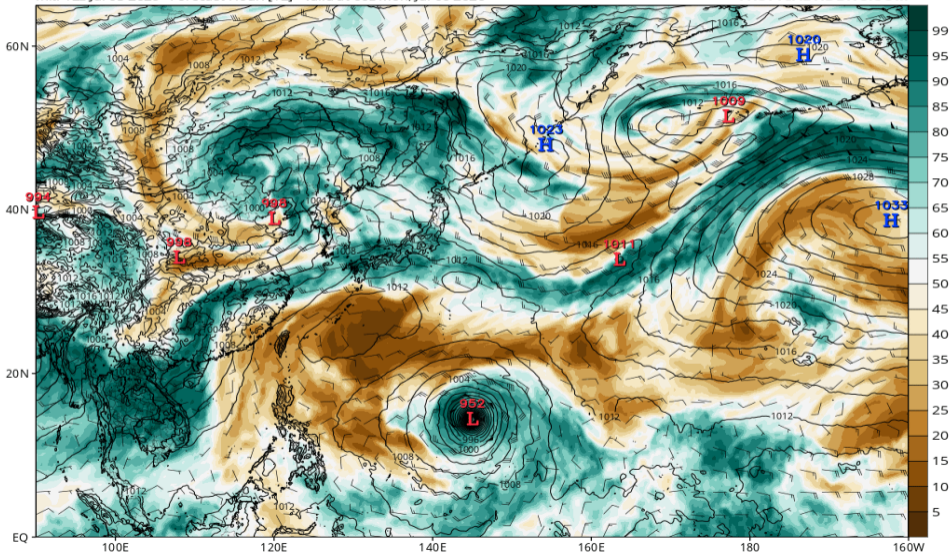


# RH700-300 (ECMWF 07/06 00Z 予報)

ECMWF MSLP (mb), 700-300 hPa Relative Humidity (%), and 700-300 hPa Wind (kt)

Init: 12z Jul 05 2026 Forecast Hour: [12] valid at 00z Mon, Jul 06 2026

TROPICALTIDBITS.COM

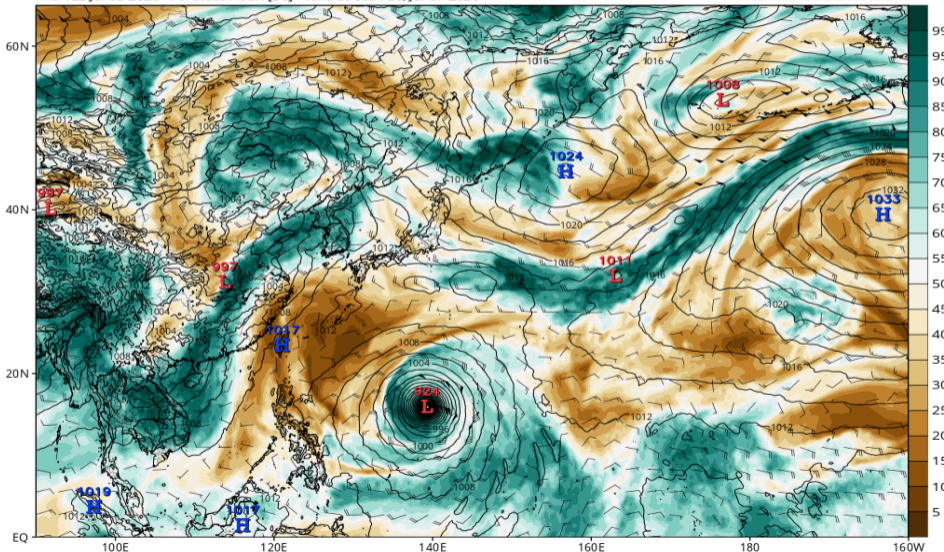


# RH700-300 (ECMWF 07/07 00Z 予報)

ECMWF MSLP (mb), 700-300 hPa Relative Humidity (%), and 700-300 hPa Wind (kt)

Init: 12z Jul 05 2026 Forecast Hour: [36] valid at 00z Tue, Jul 07 2026

TROPICALTIDBITS.COM

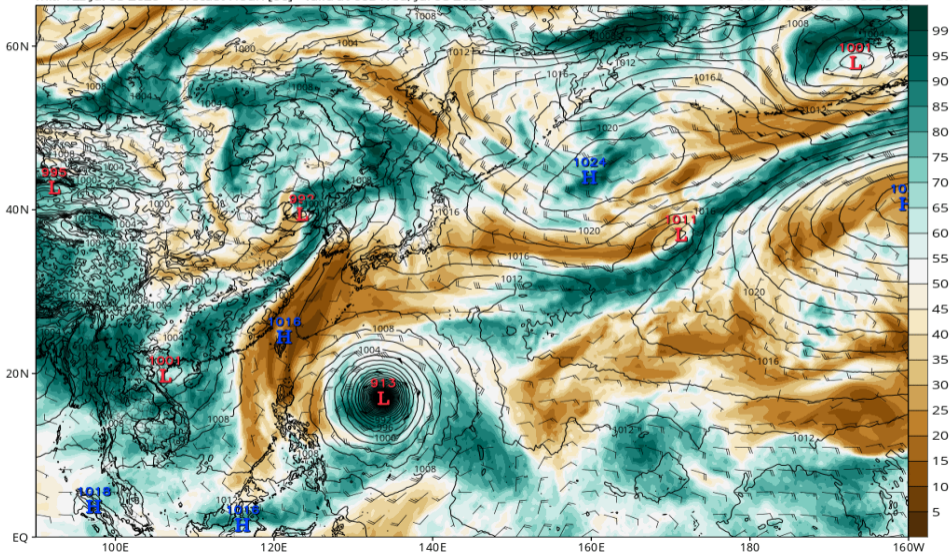


# RH700-300 (ECMWF 07/08 00Z 予報)

ECMWF MSLP (mb), 700-300 hPa Relative Humidity (%), and 700-300 hPa Wind (kt)

Init: 12z Jul 05 2026 Forecast Hour: [60] valid at 00z Wed, Jul 08 2026

TROPICALTIDBITS.COM

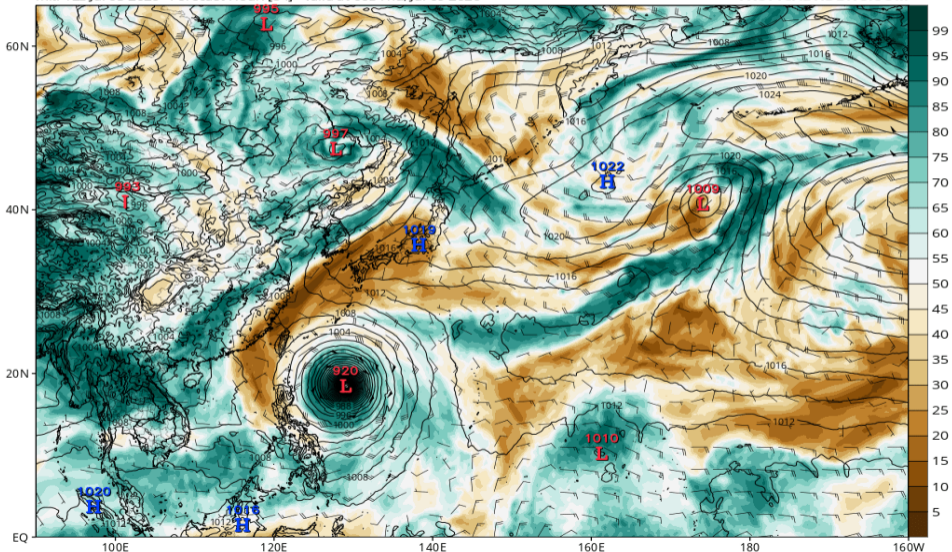


# RH700-300 (ECMWF 07/09 00Z 予報)

ECMWF MSLP (mb), 700-300 hPa Relative Humidity (%), and 700-300 hPa Wind (kt)

Init: 12z Jul 05 2026 Forecast Hour: [84] valid at 00z Thu, Jul 09 2026

TROPICALTIDBITS.COM

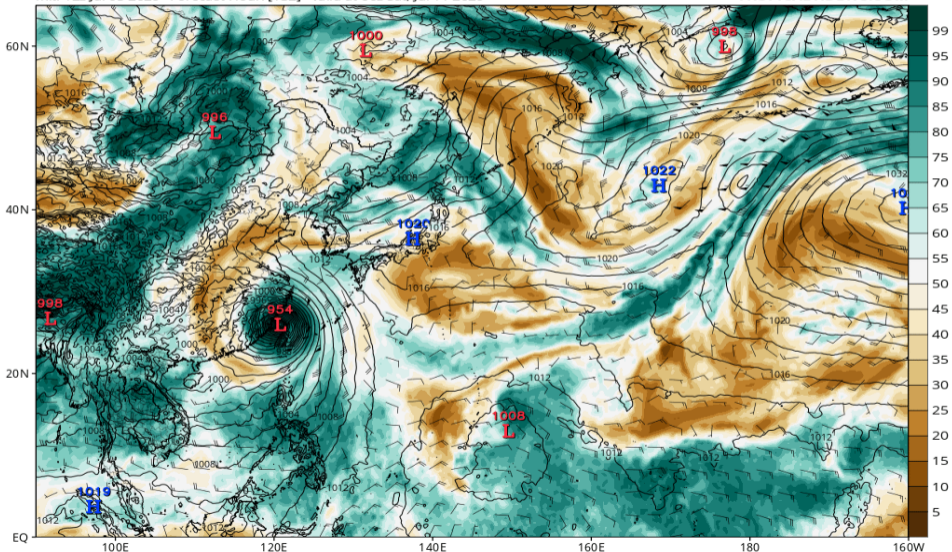


# RH700-300 (ECMWF 07/11 00Z 予報)

ECMWF MSLP (mb), 700-300 hPa Relative Humidity (%), and 700-300 hPa Wind (kt)

Init: 12z Jul 05 2026 Forecast Hour: [132] valid at 00z Sat, Jul 11 2026

TROPICALTIDBITS.COM

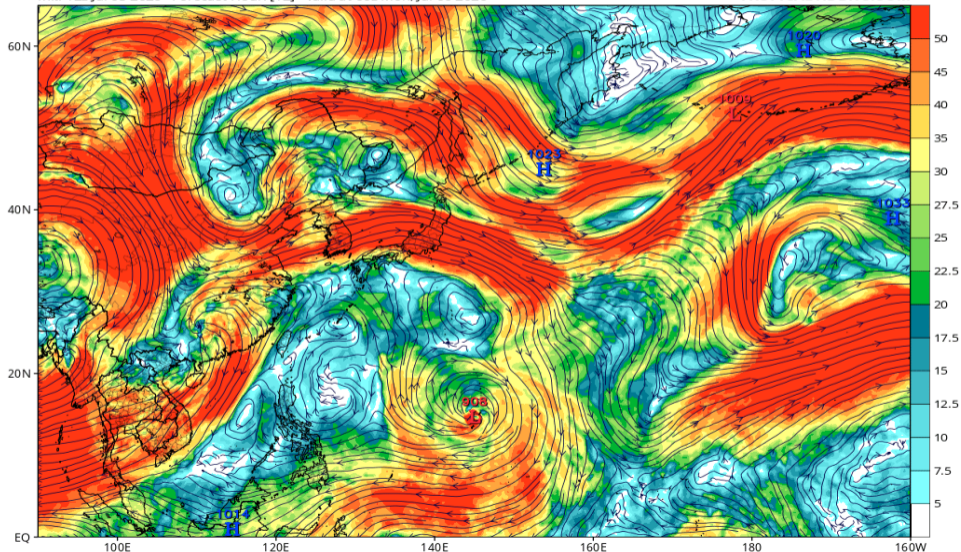


# Wshear850-200 (GFS 07/06 00Z 予報)

GFS 200mb-850mb Wind Shear (knots) & Low Centers (mb)

Init: 12z Jul 05 2026 Forecast Hour: [12] valid at 00z Mon, Jul 06 2026

TROPICALTIDBITS.COM

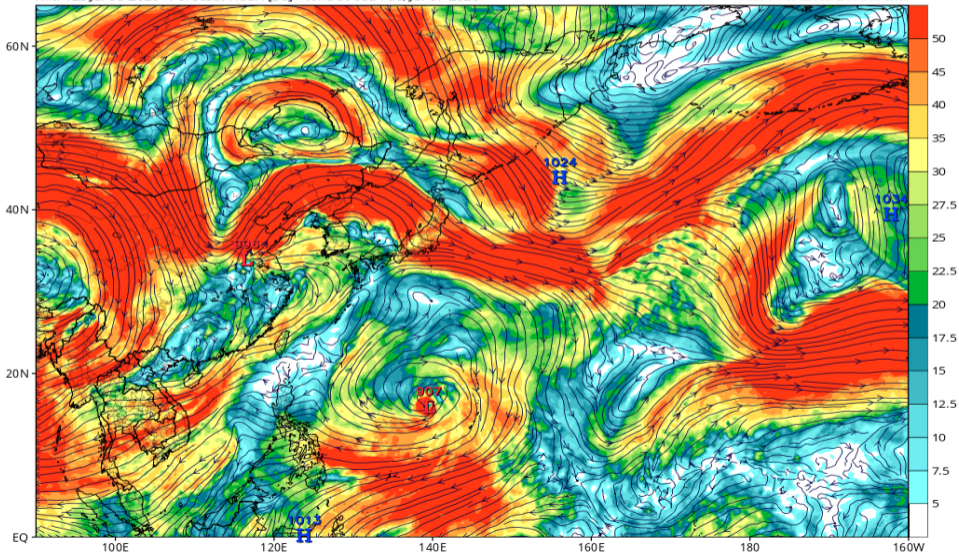


# Wshear850-200 (GFS 07/07 00Z 予報)

GFS 200mb-850mb Wind Shear (knots) & Low Centers (mb)

Init: 12z Jul 05 2026 Forecast Hour: [36] valid at 00z Tue, Jul 07 2026

TROPICALTIDBITS.COM

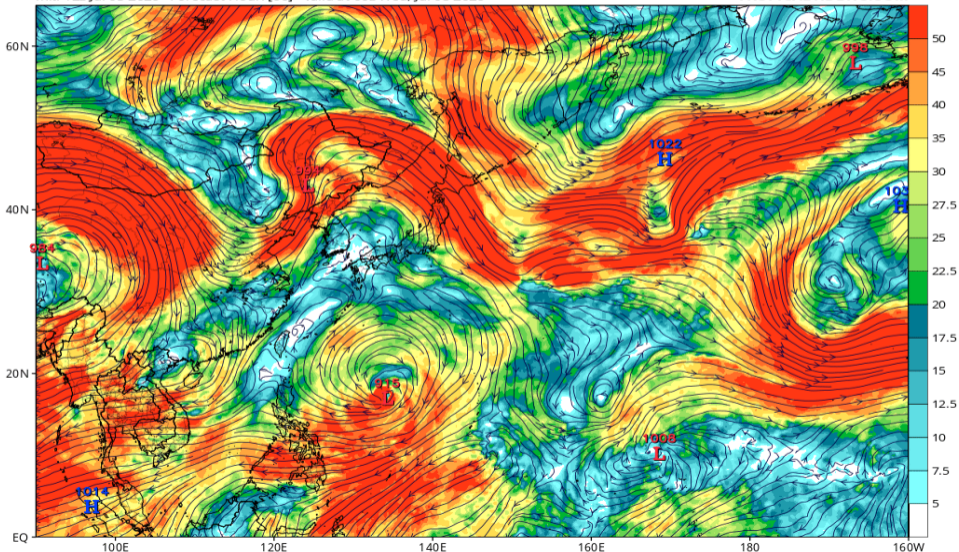


# Wshear850-200 (GFS 07/08 00Z 予報)

GFS 200mb-850mb Wind Shear (knots) & Low Centers (mb)

Init: 12z Jul 05 2026 Forecast Hour: [60] valid at 00z Wed, Jul 08 2026

TROPICALTIDBITS.COM

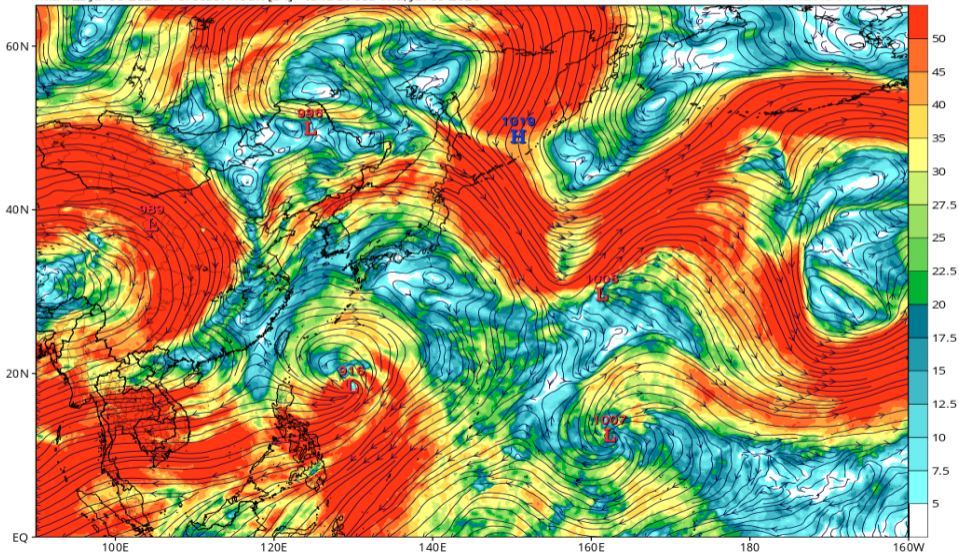


# Wshear850-200 (GFS 07/09 00Z 予報)

GFS 200mb-850mb Wind Shear (knots) & Low Centers (mb)

Init: 12z Jul 05 2026 Forecast Hour: [84] valid at 00z Thu, Jul 09 2026

TROPICALTIDBITS.COM

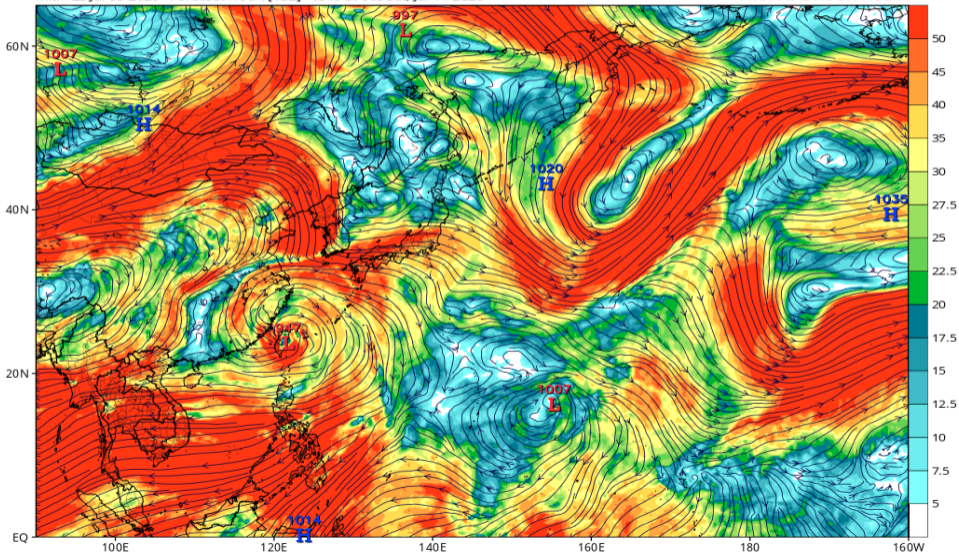


# Wshear850-200 (GFS 07/11 00Z 予報)

GFS 200mb-850mb Wind Shear (knots) & Low Centers (mb)

Init: 12z Jul 05 2026 Forecast Hour: [132] valid at 00z Sat, Jul 11 2026

TROPICALTIDBITS.COM

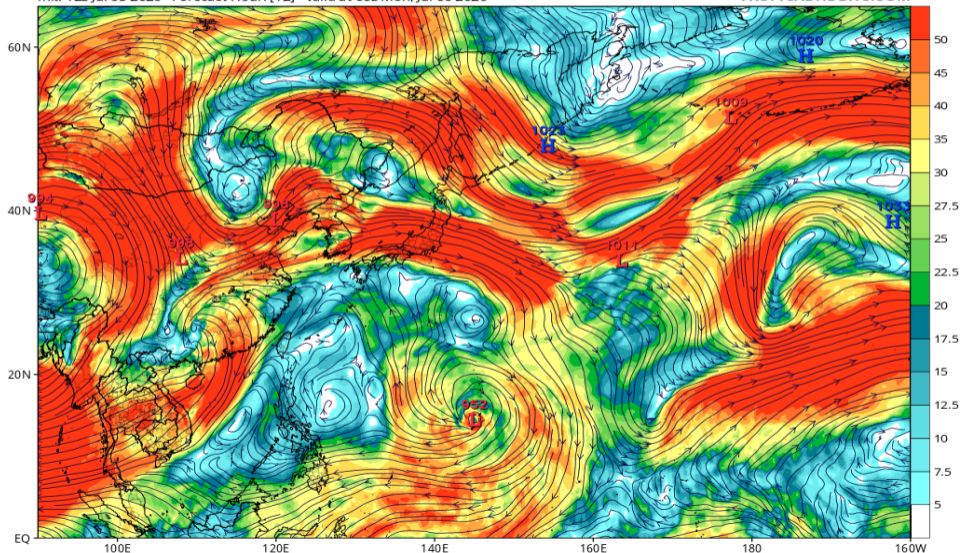


# Wshear850-200 (ECMWF 07/06 00Z 予報)

ECMWF 200mb-850mb Wind Shear (knots) & Low Centers (mb)

Init: 12z Jul 05 2026 Forecast Hour: [12] valid at 00z Mon, Jul 06 2026

TROPICALTIDBITS.COM

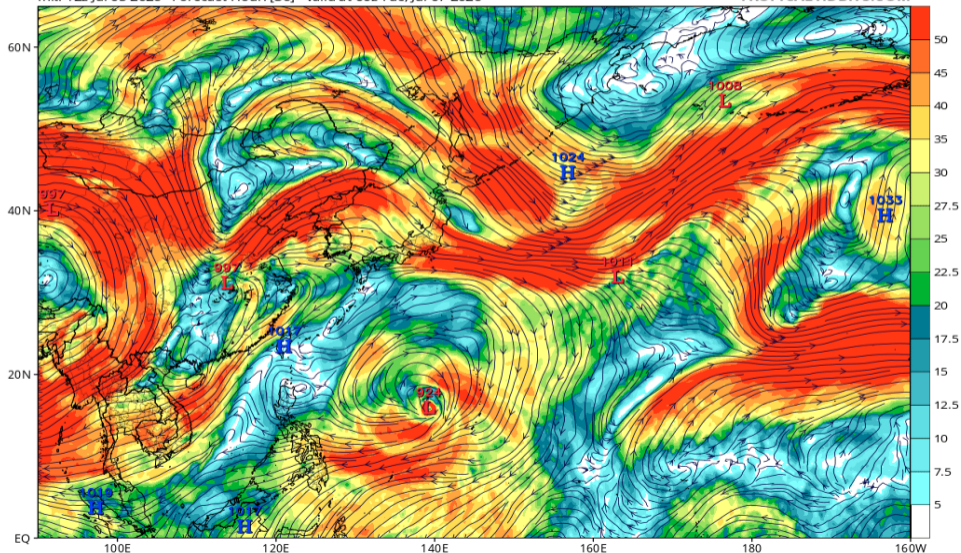


# Wshear850-200 (ECMWF 07/07 00Z 予報)

ECMWF 200mb-850mb Wind Shear (knots) & Low Centers (mb)

Init: 12z Jul 05 2026 Forecast Hour: [36] valid at 00z Tue, Jul 07 2026

TROPICALTIDBITS.COM

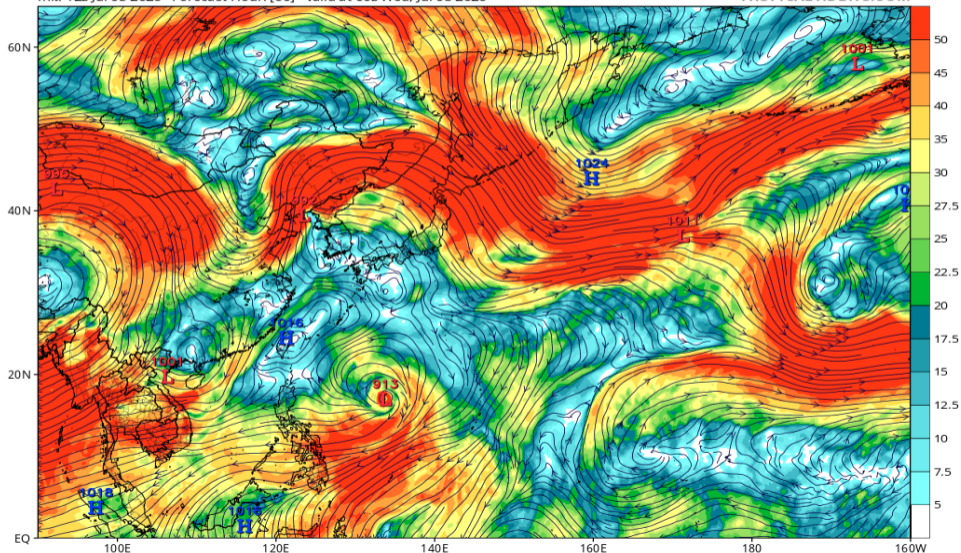


# Wshear850-200 (ECMWF 07/08 00Z 予報)

ECMWF 200mb-850mb Wind Shear (knots) & Low Centers (mb)

Init: 12z Jul 05 2026 Forecast Hour: [60] valid at 00z Wed, Jul 08 2026

TROPICALTIDBITS.COM

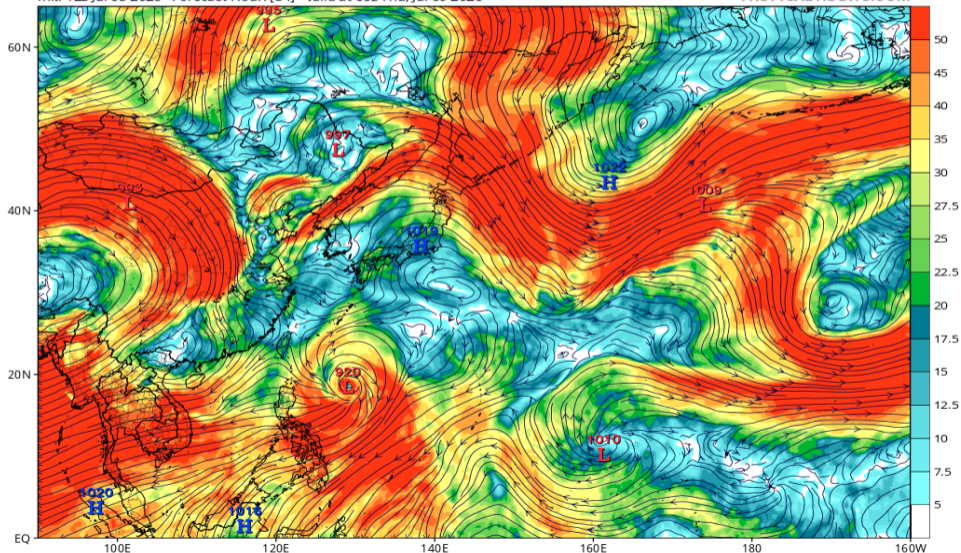


# Wshear850-200 (ECMWF 07/09 00Z 予報)

ECMWF 200mb-850mb Wind Shear (knots) & Low Centers (mb)

Init: 12z Jul 05 2026 Forecast Hour: [84] valid at 00z Thu, Jul 09 2026

TROPICALTIDBITS.COM

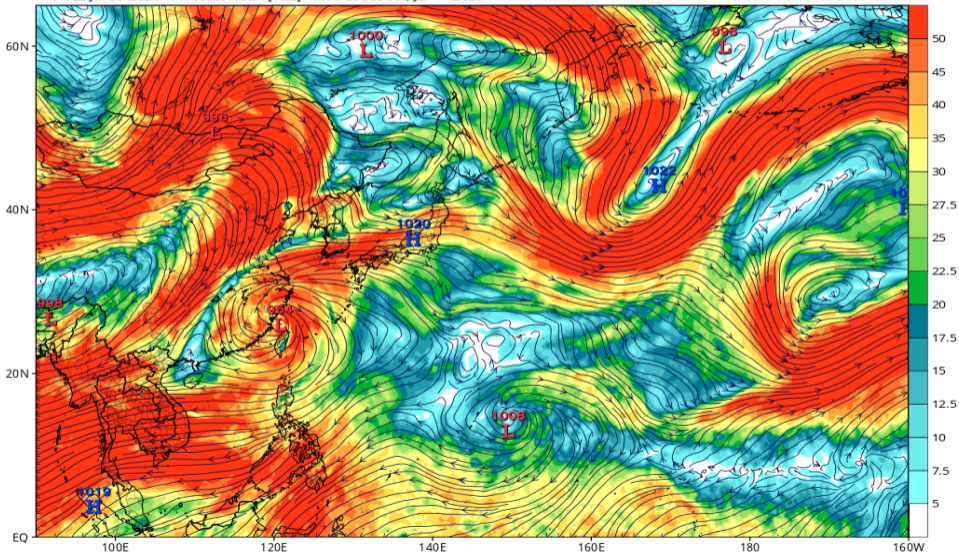


# Wshear850-200 (ECMWF 07/11 00Z 予報)

ECMWF 200mb-850mb Wind Shear (knots) & Low Centers (mb)

Init: 12z Jul 05 2026 Forecast Hour: [132] valid at 00z Sat, Jul 11 2026

TROPICALTIDBITS.COM

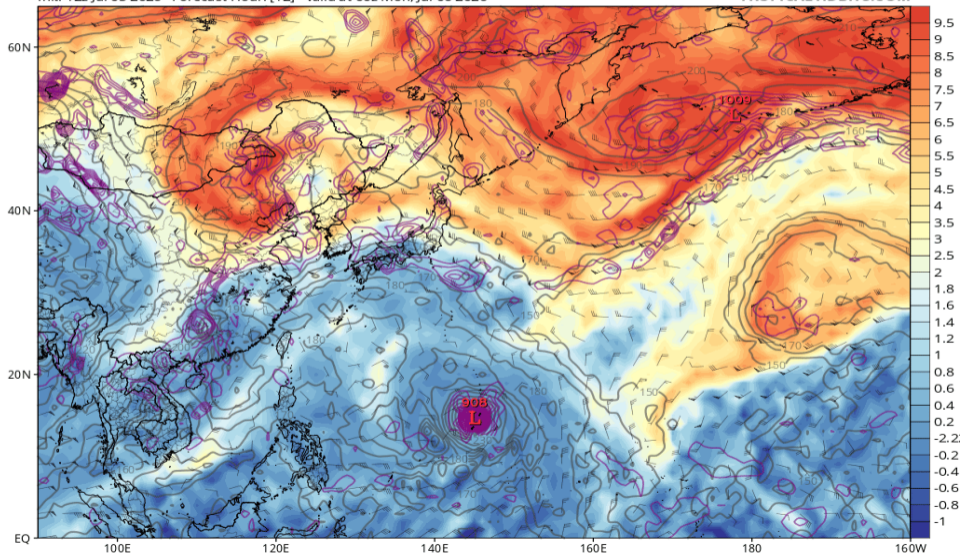


# 渦位 355K (GFS 07/06 00Z 予報)

GFS 355K Cyclonic PV (PVU), Wind (kt), Pressure (hPa, gray), & 850 hPa Cyclonic Vorticity (purple) [1.0°x1.0° grid]

Init: 12z Jul 05 2026 Forecast Hour: [12] valid at 00z Mon, Jul 06 2026

TROPICALTIDBITS.COM

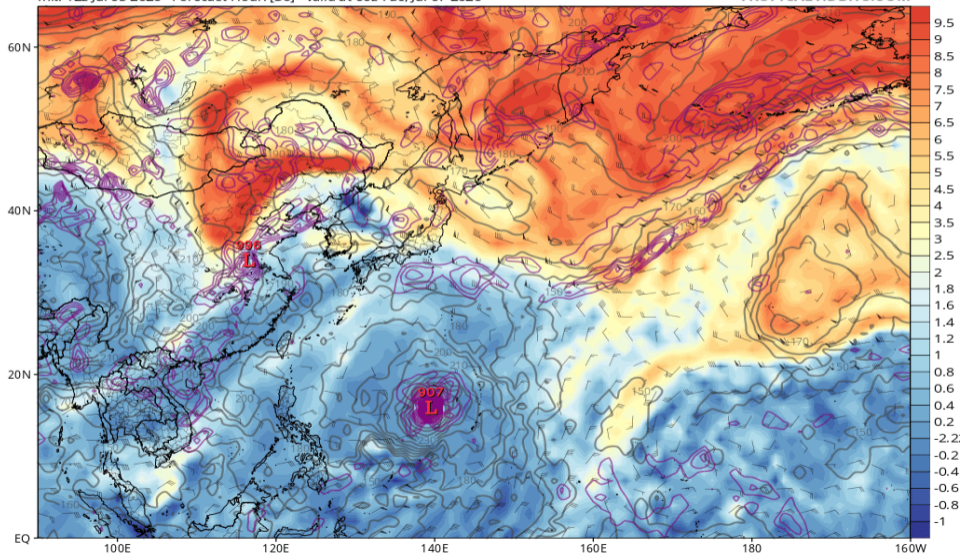


# 渦位 355K (GFS 07/07 00Z 予報)

GFS 355K Cyclonic PV (PVU), Wind (kt), Pressure (hPa, gray), & 850 hPa Cyclonic Vorticity (purple) [1.0°x1.0° grid]

Init: 12z Jul 05 2026 Forecast Hour: [36] valid at 00z Tue, Jul 07 2026

TROPICALTIDBITS.COM

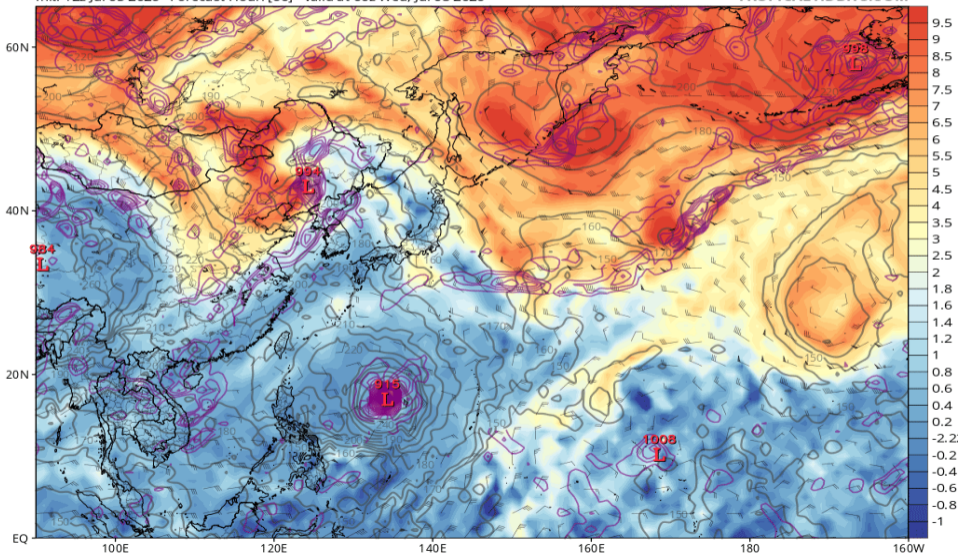


# 渦位 355K (GFS 07/08 00Z 予報)

GFS 355K Cyclonic PV (PVU), Wind (kt), Pressure (hPa, gray), & 850 hPa Cyclonic Vorticity (purple) [1.0°x1.0° grid]

Init: 12z Jul 05 2026 Forecast Hour: [60] valid at 00z Wed, Jul 08 2026

TROPICALTIDBITS.COM

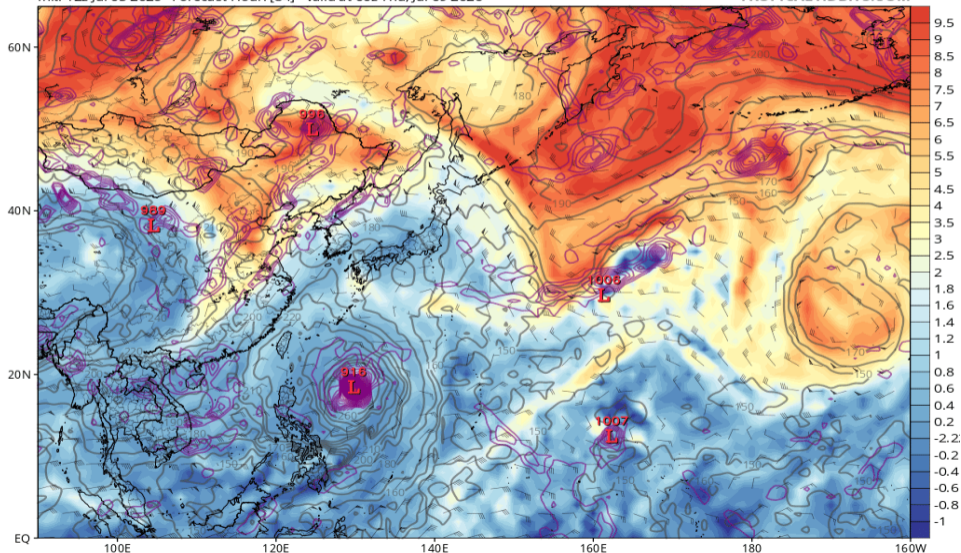


# 渦位 355K (GFS 07/09 00Z 予報)

GFS 355K Cyclonic PV (PVU), Wind (kt), Pressure (hPa, gray), & 850 hPa Cyclonic Vorticity (purple) [1.0°x1.0° grid]

Init: 12z Jul 05 2026 Forecast Hour: [84] valid at 00z Thu, Jul 09 2026

TROPICALTIDBITS.COM

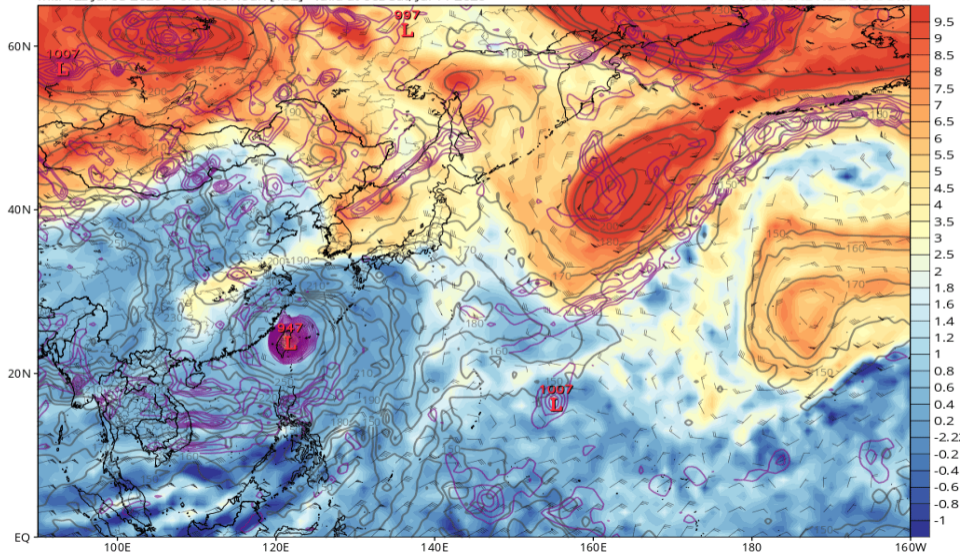


# 渦位 355K (GFS 07/11 00Z 予報)

GFS 355K Cyclonic PV (PVU), Wind (kt), Pressure (hPa, gray), & 850 hPa Cyclonic Vorticity (purple) [1.0°x1.0° grid]

Init: 12z Jul 05 2026 Forecast Hour: [132] valid at 00z Sat, Jul 11 2026

TROPICALTIDBITS.COM



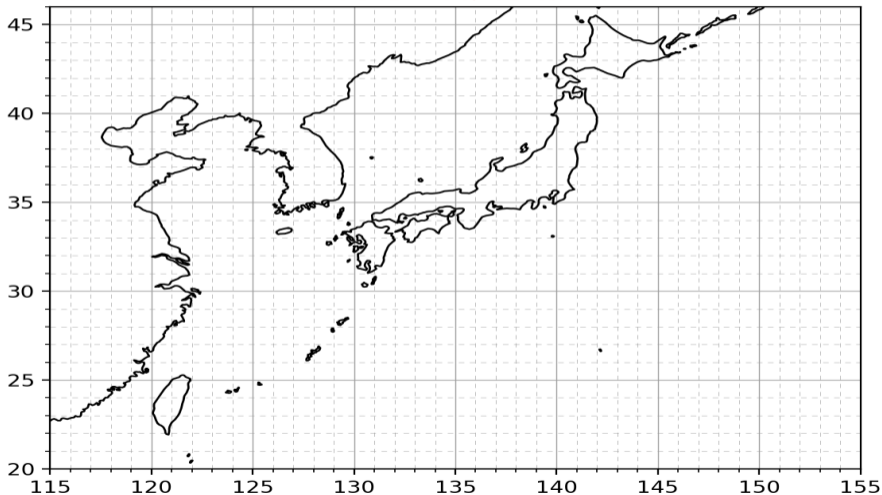
# GrandEns (IFS/AIFS/GFS/AIGFS/GSM 07/06 00Z 予報)

Grand Ensemble

weather-models.info | ECMWF Open Data (CC BY 4.0),  
NOAA data, 気象庁データ (ウェザーマップ社提供)

Init: 2026/07/05 18Z FT: 006h Valid: 2026/07/06 00Z

実際の進路予想は、気象庁の台風予報を利用してください



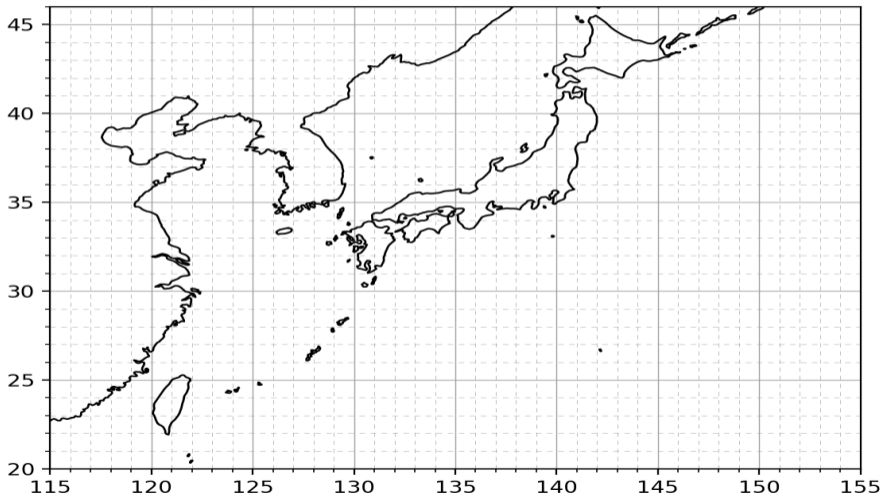
# GrandEns (IFS/AIFS/GFS/AIGFS/GSM 07/07 00Z 予報)

Grand Ensemble

weather-models.info | ECMWF Open Data (CC BY 4.0),  
NOAA data, 気象庁データ (ウェザーマップ社提供)

Init: 2026/07/05 18Z FT: 030h Valid: 2026/07/07 00Z

実際の進路予想は、気象庁の台風予報を利用してください



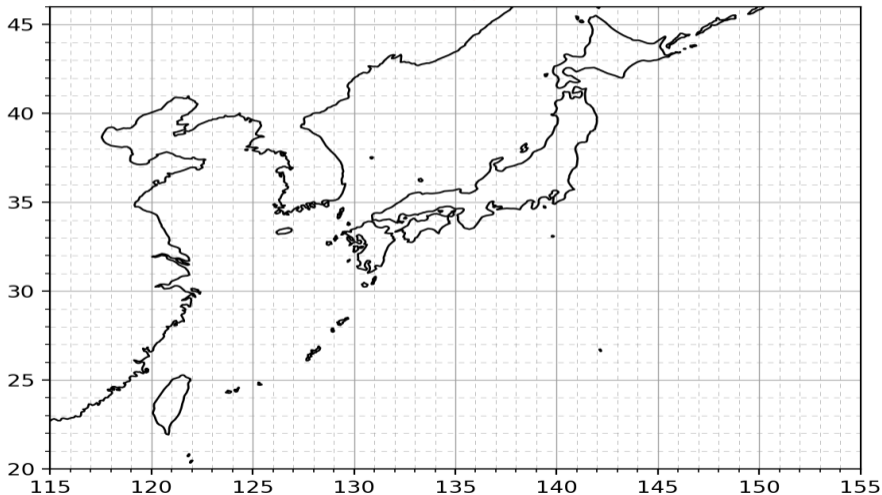
# GrandEns (IFS/AIFS/GFS/AIGFS/GSM 07/08 00Z 予報)

Grand Ensemble

weather-models.info | ECMWF Open Data (CC BY 4.0),  
NOAA data, 気象庁データ (ウェザーマップ社提供)

Init: 2026/07/05 18Z FT: 054h Valid: 2026/07/08 00Z

実際の進路予想は、気象庁の台風予報を利用してください



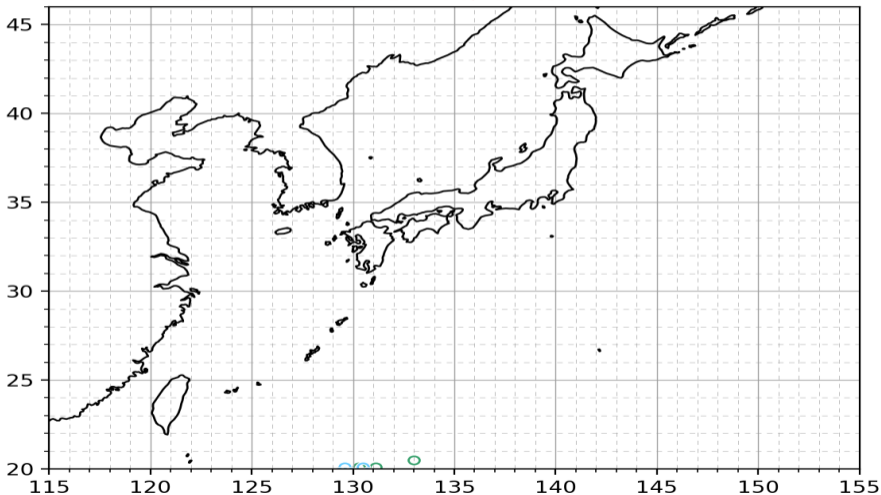
# GrandEns (IFS/AIFS/GFS/AIGFS/GSM 07/09 00Z 予報)

Grand Ensemble

weather-models.info | ECMWF Open Data (CC BY 4.0),  
NOAA data, 気象庁データ (ウェザーマップ社提供)

Init: 2026/07/05 18Z FT: 078h Valid: 2026/07/09 00Z

実際の進路予想は、気象庁の台風予報を利用してください



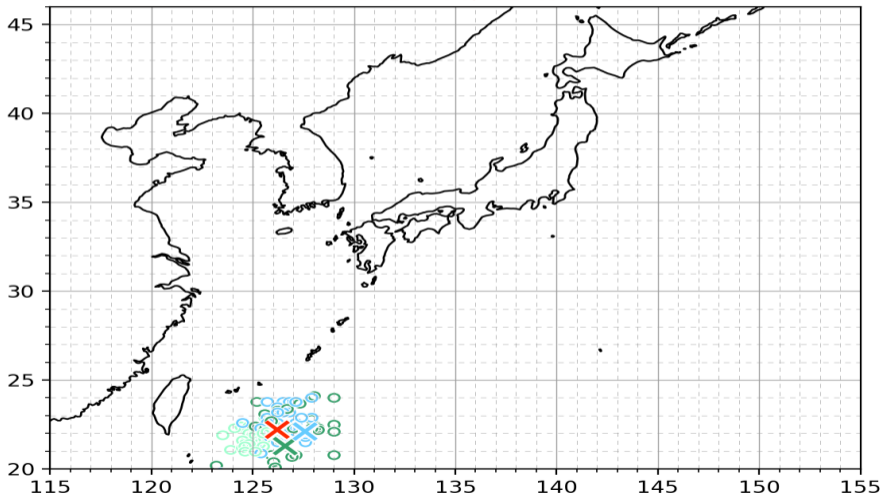
# GrandEns (IFS/AIFS/GFS/AIGFS/GSM 07/10 00Z 予報)

Grand Ensemble

weather-models.info | ECMWF Open Data (CC BY 4.0),  
NOAA data, 気象庁データ (ウェザーマップ社提供)

Init: 2026/07/05 18Z FT: 102h Valid: 2026/07/10 00Z

実際の進路予想は、気象庁の台風予報を利用してください



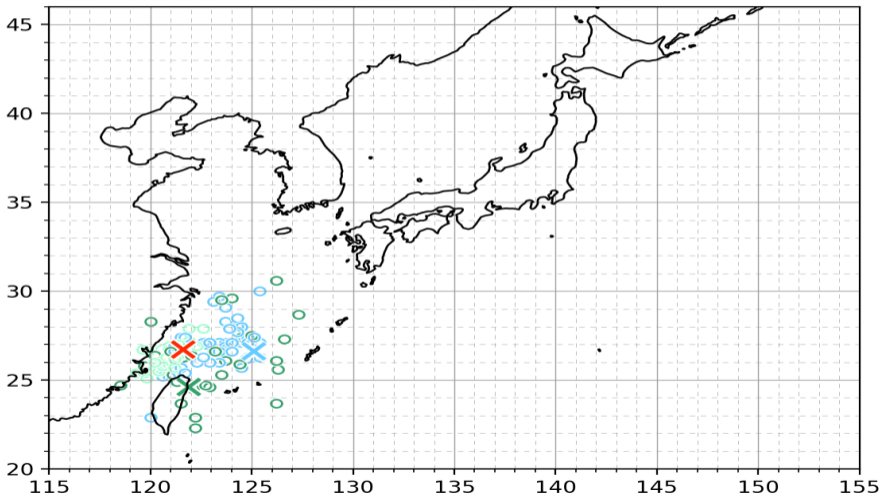
# GrandEns (IFS/AIFS/GFS/AIGFS/GSM 07/11 00Z 予報)

Grand Ensemble

weather-models.info | ECMWF Open Data (CC BY 4.0),  
NOAA data, 気象庁データ (ウェザーマップ社提供)

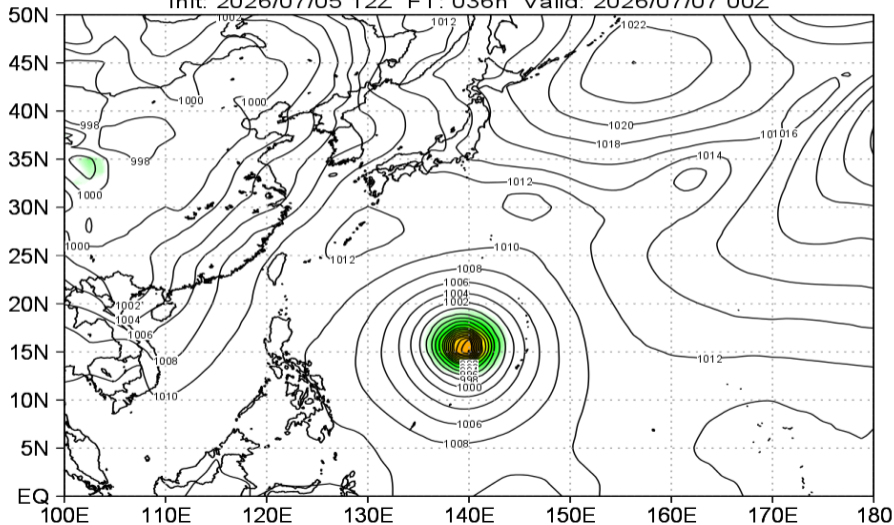
Init: 2026/07/05 18Z FT: 126h Valid: 2026/07/11 00Z

実際の進路予想は、気象庁の台風予報を利用してください



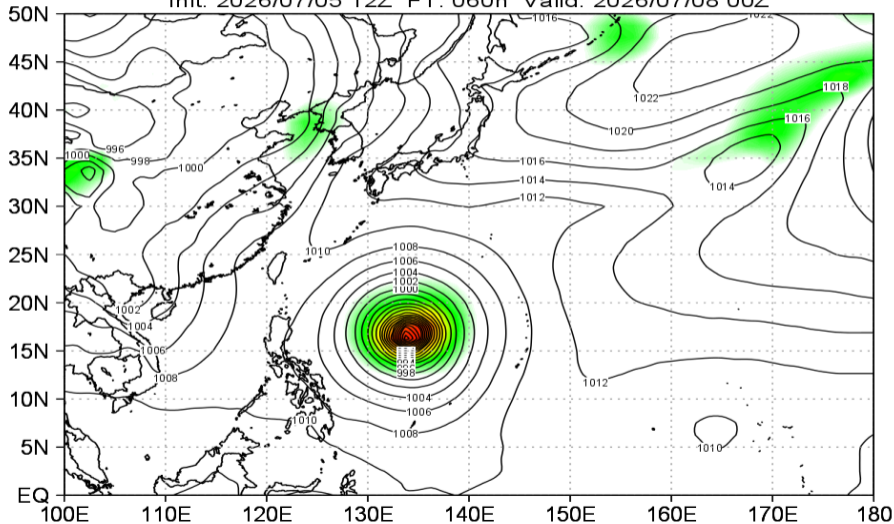
# 地上気圧 (GSMens 07/07 00Z 予報)

JMA GEPS MSLP (hPa) Mean&Spread  
Init: 2026/07/05 12Z FT: 036h Valid: 2026/07/07 00Z



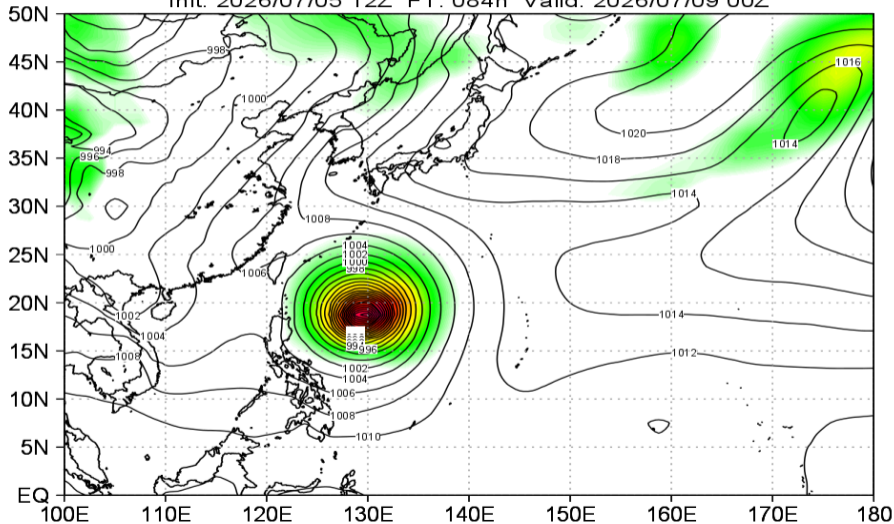
# 地上気圧 (GSMens 07/08 00Z 予報)

JMA GEPS MSLP (hPa) Mean&Spread  
Init: 2026/07/05 12Z FT: 060h Valid: 2026/07/08 00Z



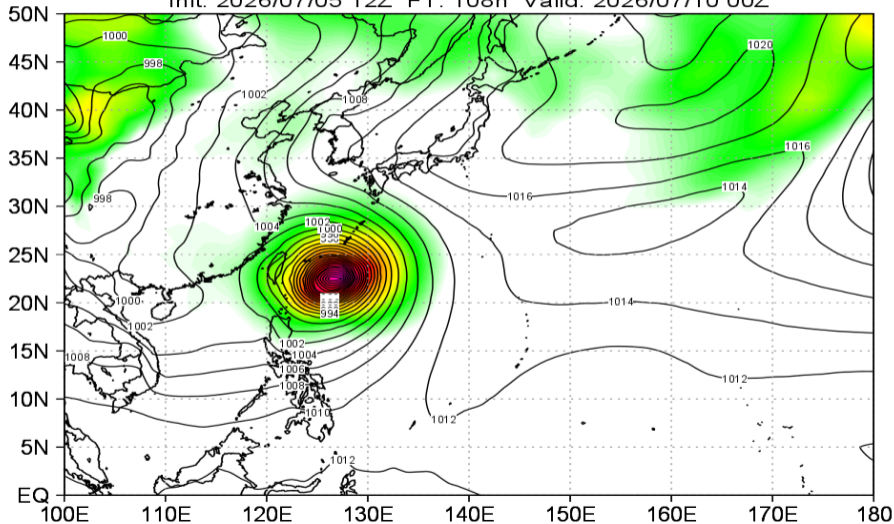
# 地上気圧 (GSMens 07/09 00Z 予報)

JMA GEPS MSLP (hPa) Mean&Spread  
Init: 2026/07/05 12Z FT: 084h Valid: 2026/07/09 00Z



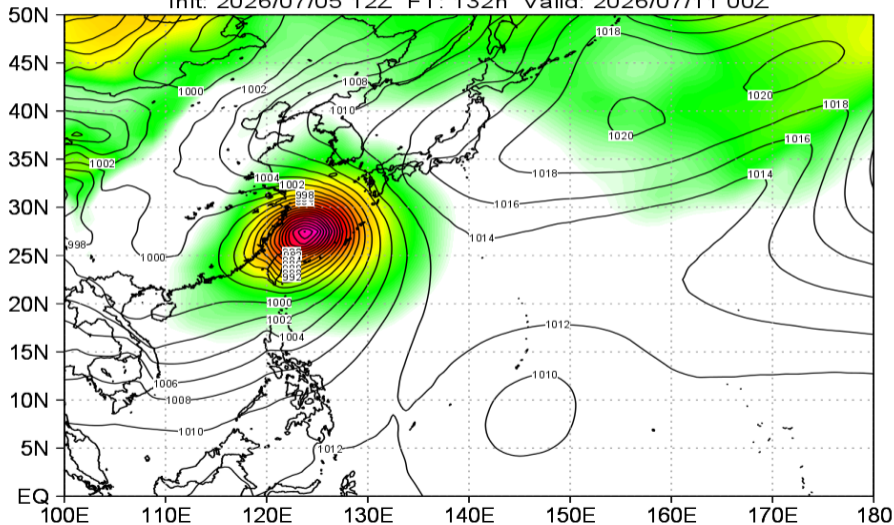
# 地上気圧 (GSMens 07/10 00Z 予報)

JMA GEPS MSLP (hPa) Mean&Spread  
Init: 2026/07/05 12Z FT: 108h Valid: 2026/07/10 00Z



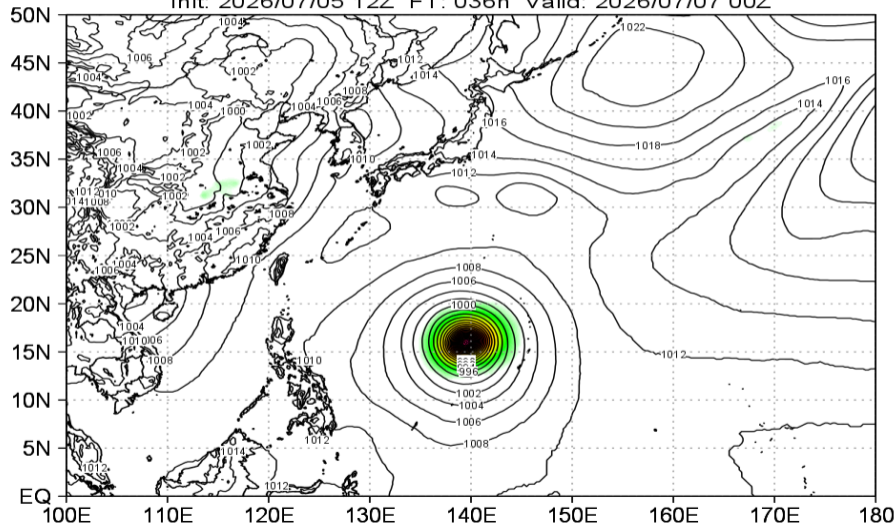
# 地上気圧 (GSMens 07/11 00Z 予報)

JMA GEPS MSLP (hPa) Mean&Spread  
Init: 2026/07/05 12Z FT: 132h Valid: 2026/07/11 00Z



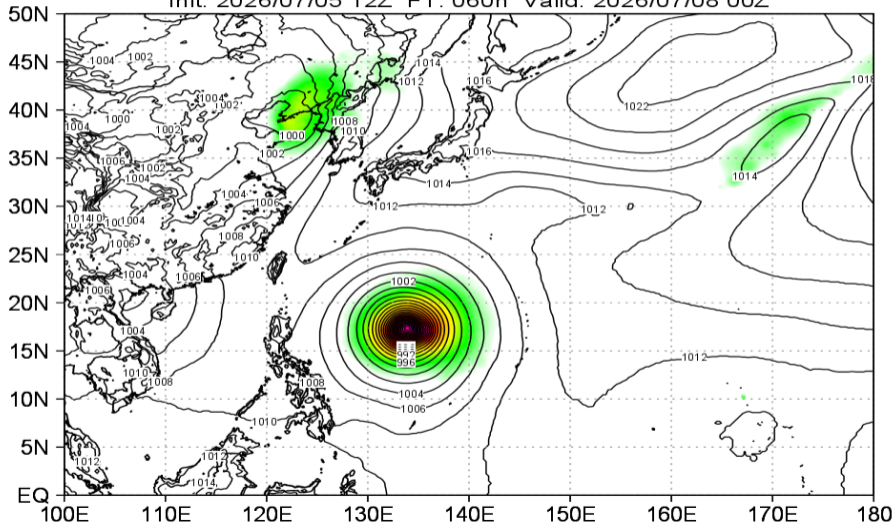
# 地上気圧 (IFSens 07/07 00Z 予報)

ECMWF IFS ENS MSLP (hPa) Mean&Spread  
Init: 2026/07/05 12Z FT: 036h Valid: 2026/07/07 00Z



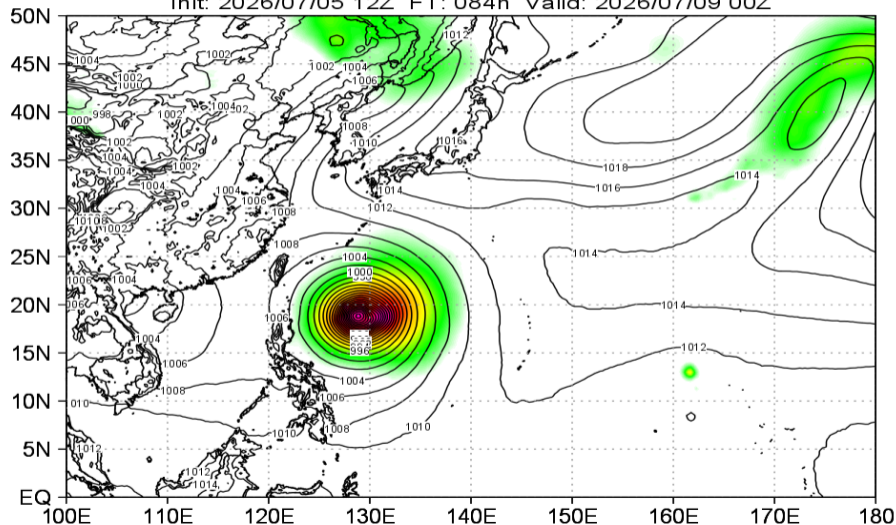
# 地上気圧 (IFSens 07/08 00Z 予報)

ECMWF IFS ENS MSLP (hPa) Mean&Spread  
Init: 2026/07/05 12Z FT: 060h Valid: 2026/07/08 00Z



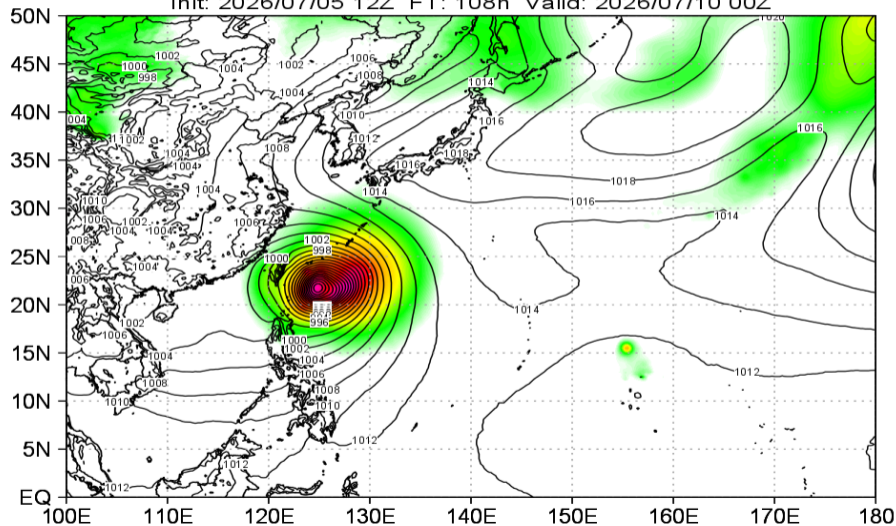
# 地上気圧 (IFSens 07/09 00Z 予報)

ECMWF IFS ENS MSLP (hPa) Mean&Spread  
Init: 2026/07/05 12Z FT: 084h Valid: 2026/07/09 00Z



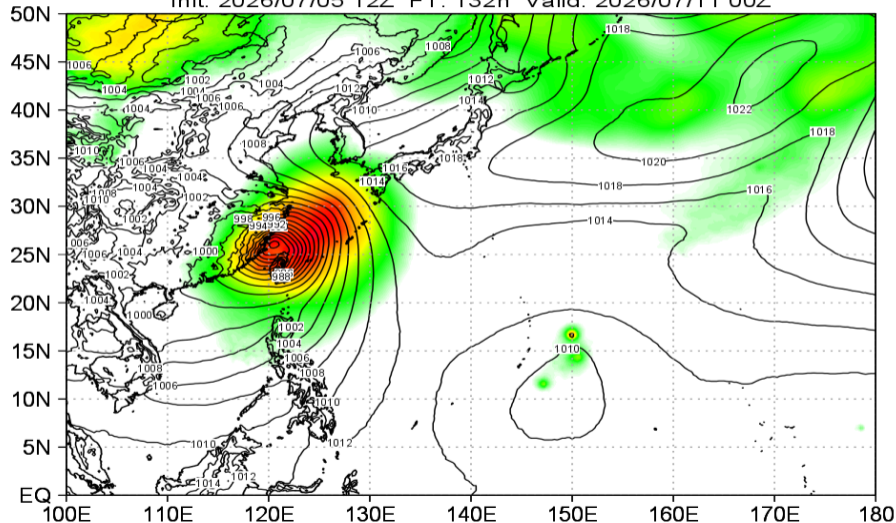
# 地上気圧 (IFSens 07/10 00Z 予報)

ECMWF IFS ENS MSLP (hPa) Mean&Spread  
Init: 2026/07/05 12Z FT: 108h Valid: 2026/07/10 00Z



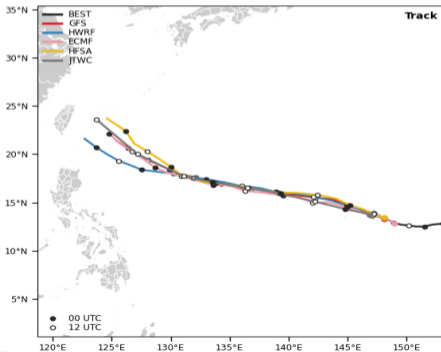
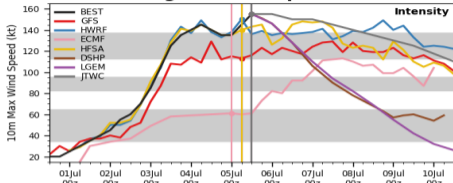
# 地上気圧 (IFSens 07/11 00Z 予報)

ECMWF IFS ENS MSLP (hPa) Mean&Spread  
Init: 2026/07/05 12Z FT: 132h Valid: 2026/07/11 00Z

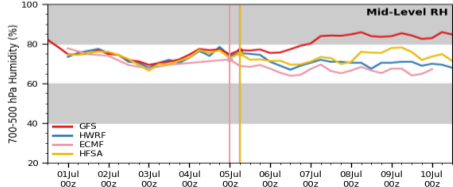
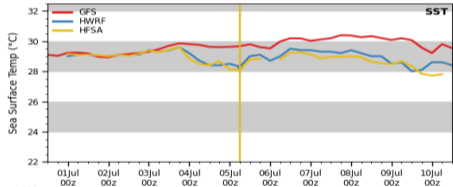
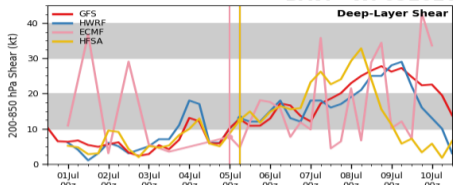


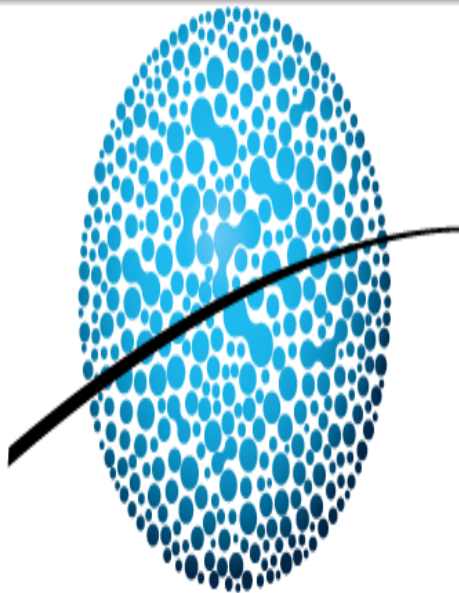
# 決定論マルチモデル予報 09W (07/05 12Z 初期値)

## Multi-Model Diagnostic Comparison



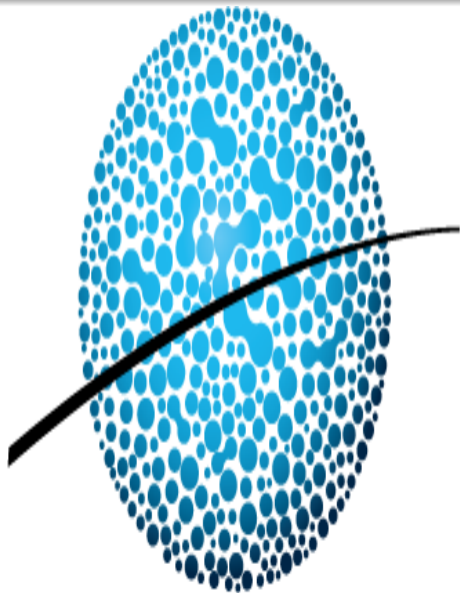
## BAVI - WP092026





APCC

아시아·태평양경제협력체 기후센터



APCC

아시아·태평양경제협력체 기후센터