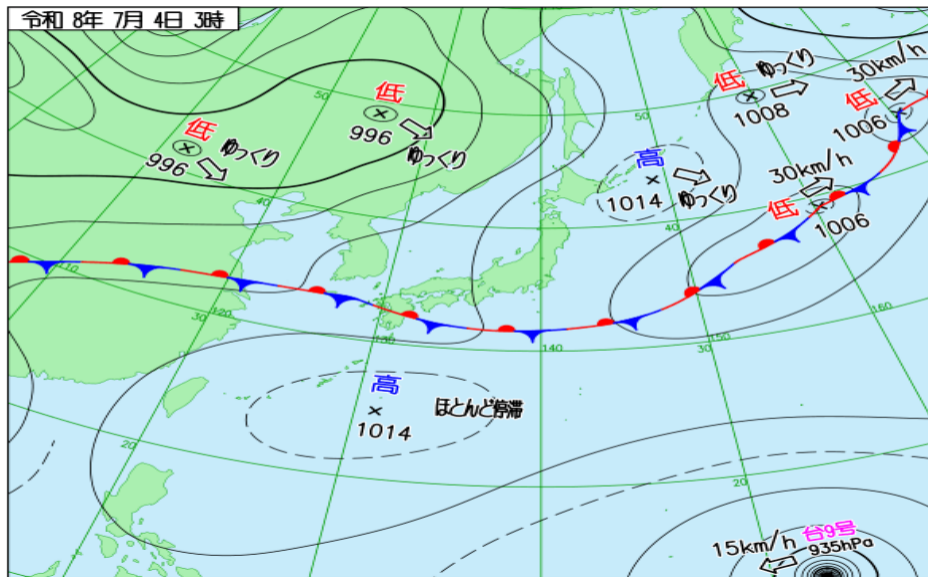
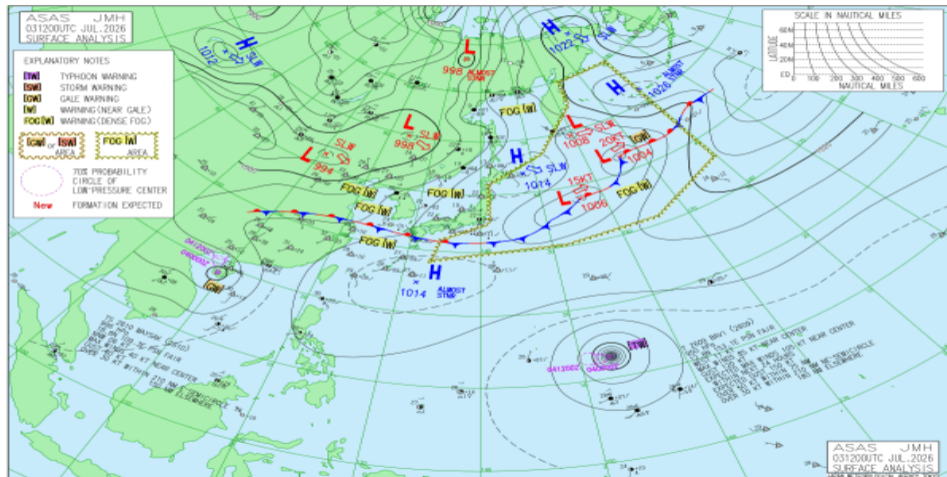


# JMA 日本域実況天気図 07/03 18Z

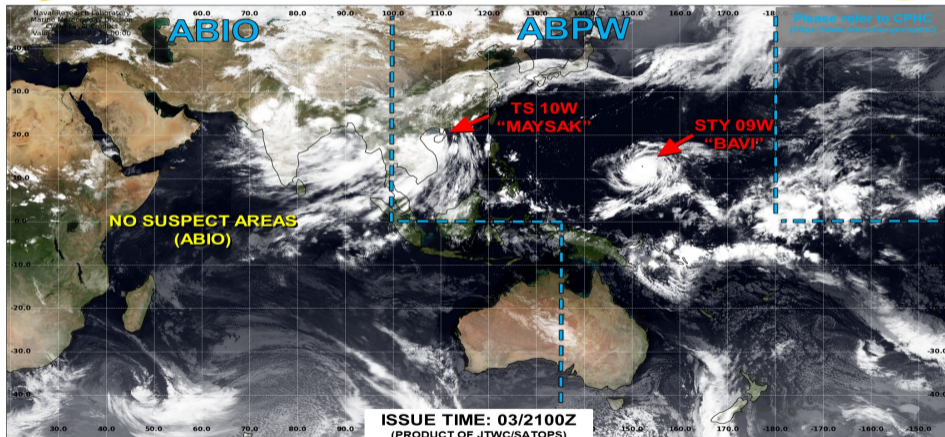


# JMA アジア太平洋域実況天気図 07/03 12Z





## JOINT TYPHOON WARNING CENTER



**LOW**

TC development unlikely within 24 hours

**MEDIUM**

TC development likely, but expected to occur beyond 24 hours

**HIGH**

TC development likely within 24 hours (Reference TCFA)

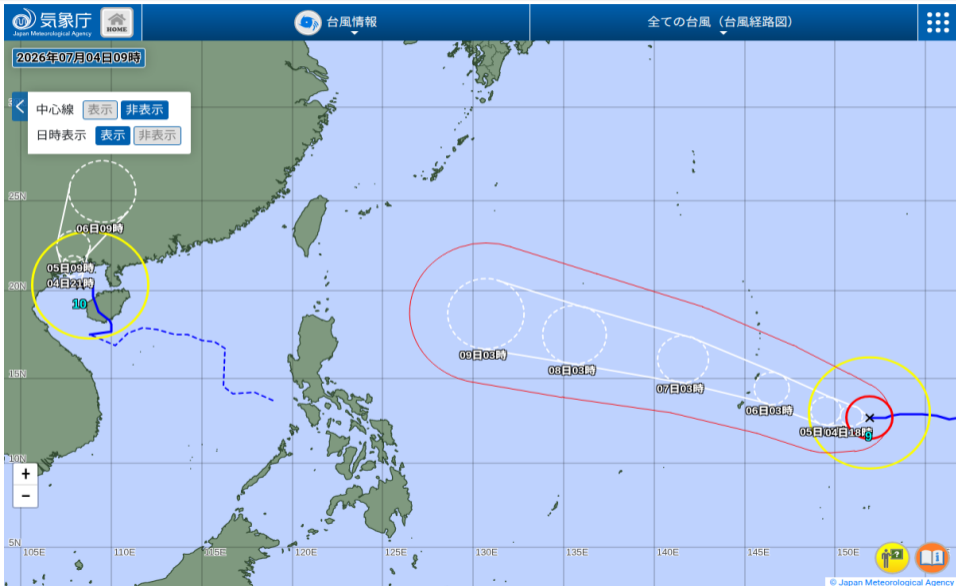
**SUB TROPICAL**

Monitoring for potential transition to TC. Invest label color denotes tropical transition probability

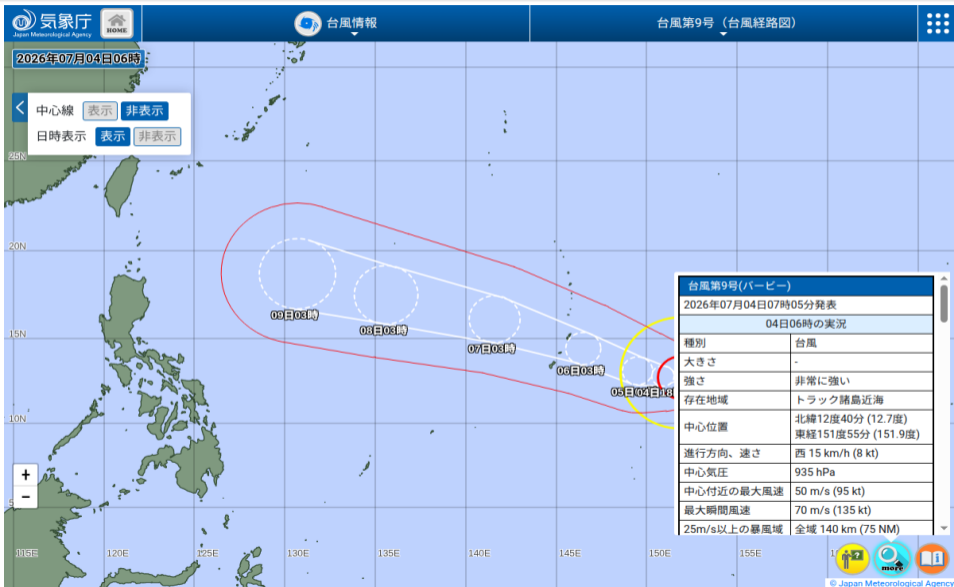


Tropical Cyclone (Reference Warning)

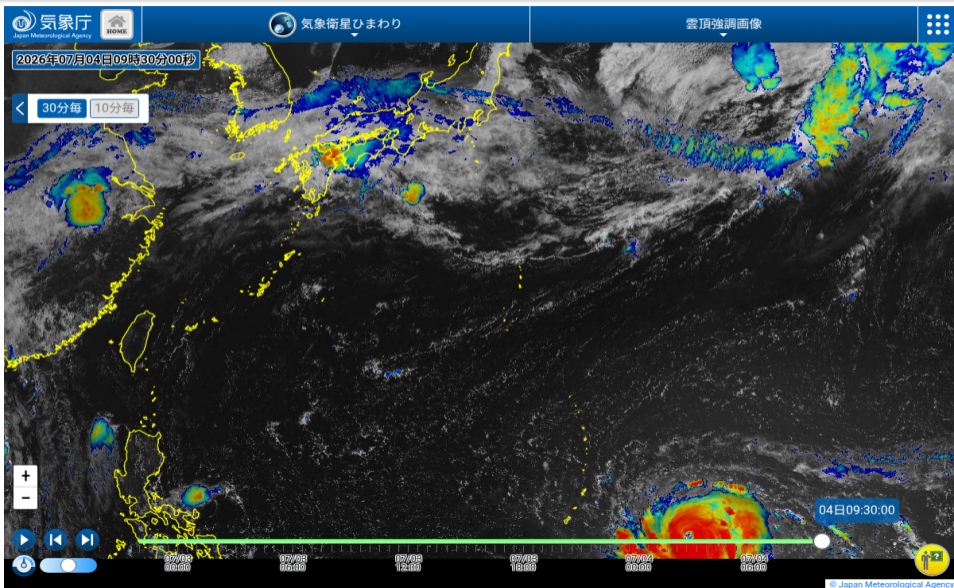
# JMA 台風実況



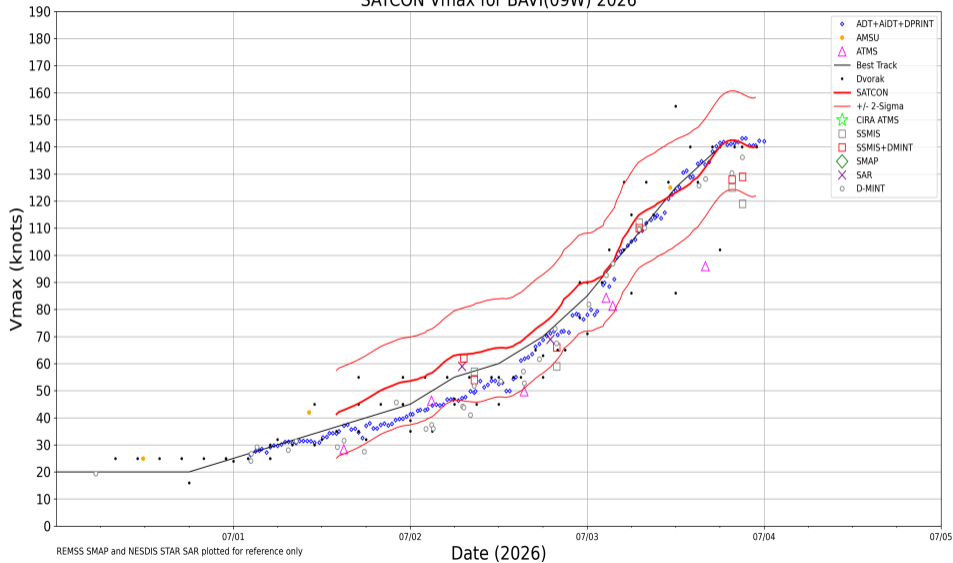
# JMA 台風実況



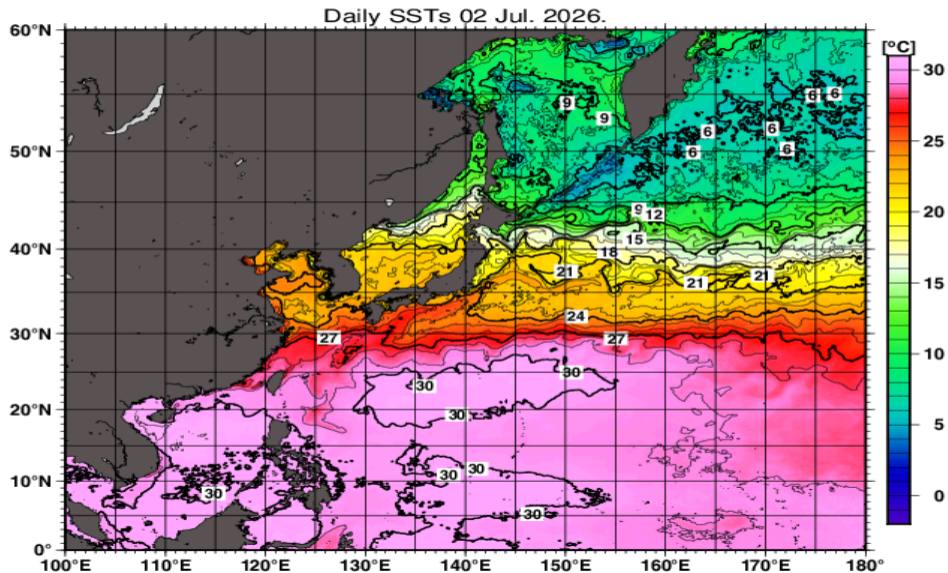
# ひまわり雲頂強調



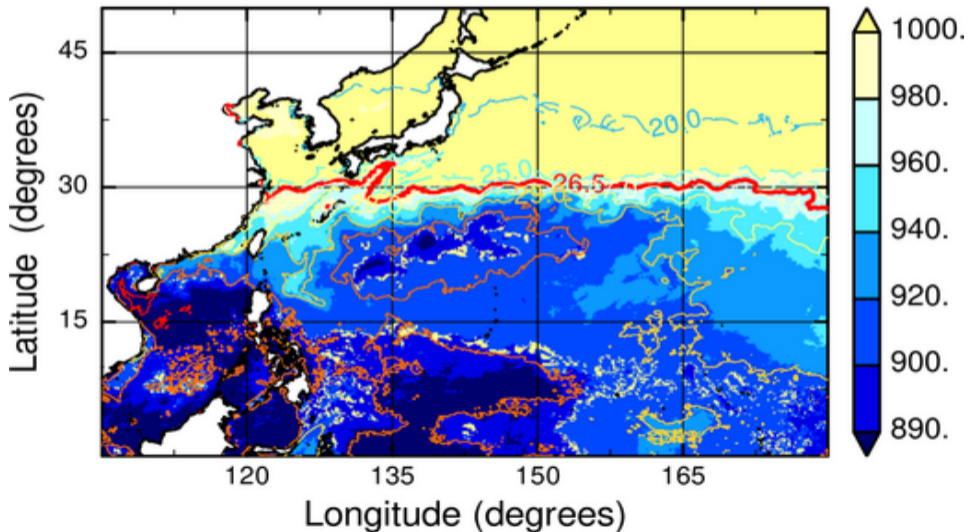
SATCON Vmax for BAVI(09W) 2026



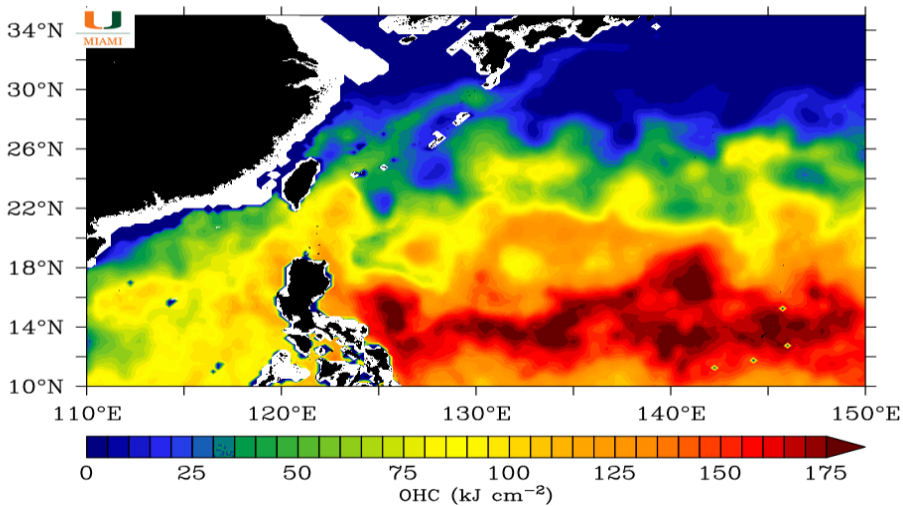
# JMA 海面水温解析



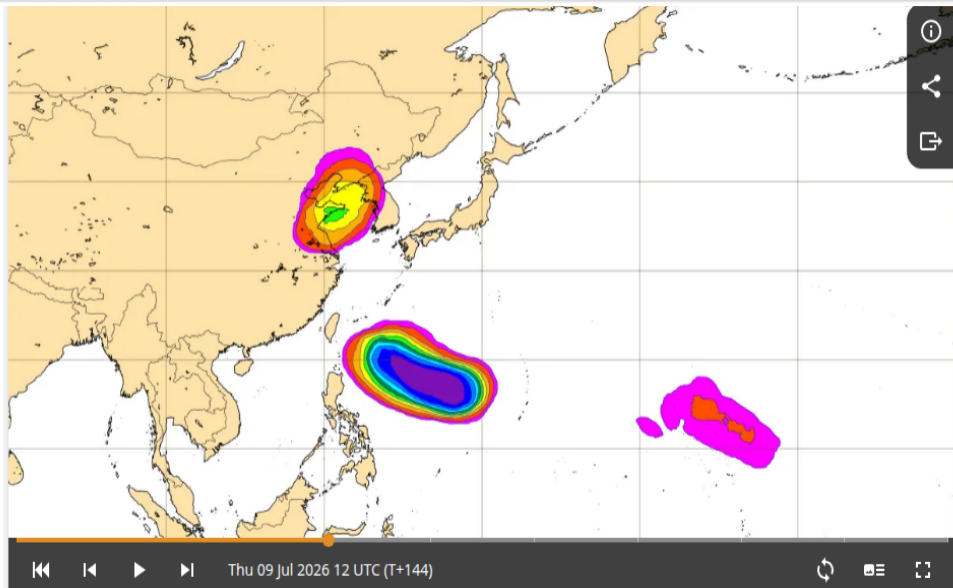
MPI<sub>BE</sub>, JMAGSM+HIMSST (mb) (00:00:00Z02Jul2026)



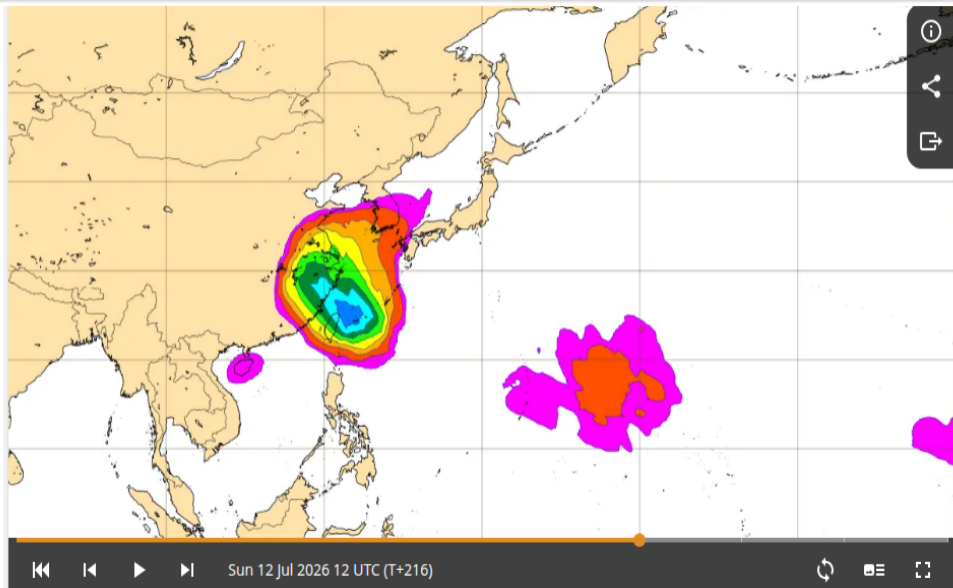
Ocean Heat Content: 07/03/2026



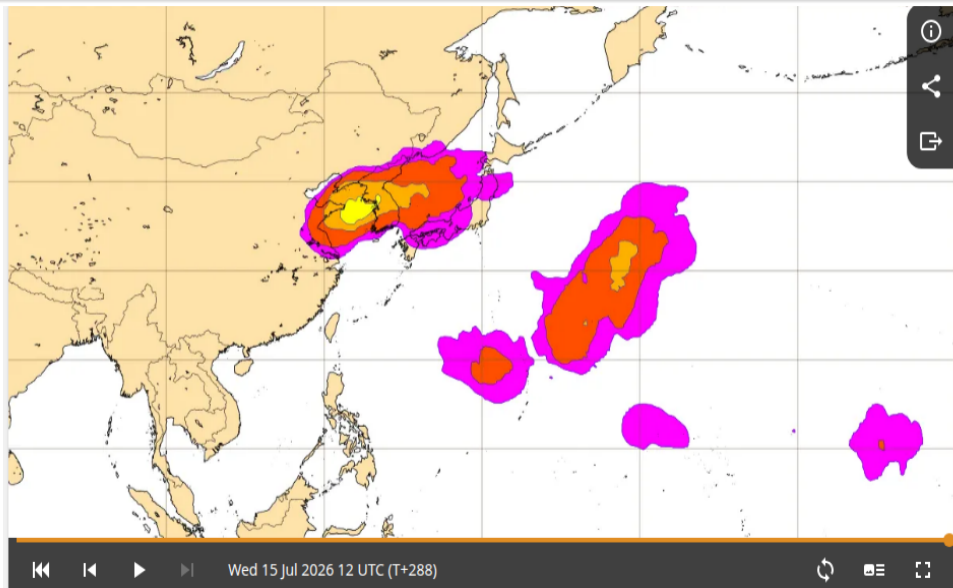
# ECMWF TC genesis 07/09 12Z (6 日先) 予報



# ECMWF TC genesis 07/12 12Z (9 日先) 予報



# ECMWF TC genesis 07/15 12Z (12 日先) 予報

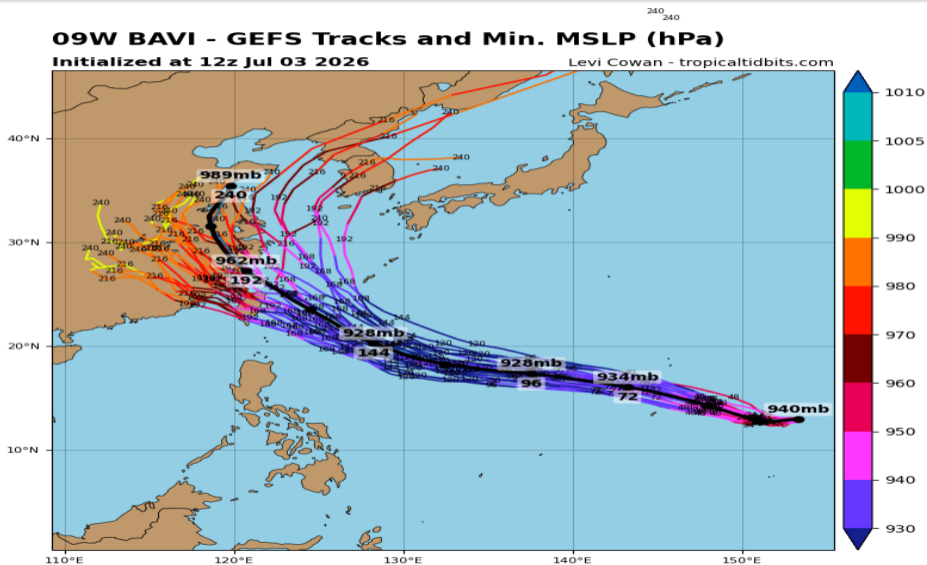


# 09W GEFS (07/03 12Z 初期値)

## 09W BAVI - GEFS Tracks and Min. MSLP (hPa)

Initialized at 12z Jul 03 2026

Levi Cowan - tropicaltidbits.com

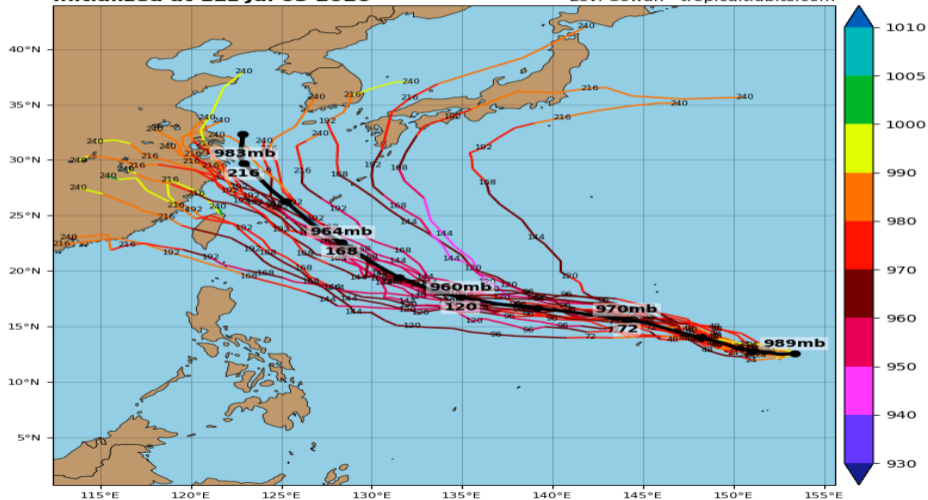


# 09W GEPS (07/03 12Z 初期値)

## 09W BAVI - GEPS Tracks and Min. MSLP (hPa)

Initialized at 12z Jul 03 2026

Levi Cowan - tropicaltidbits.com

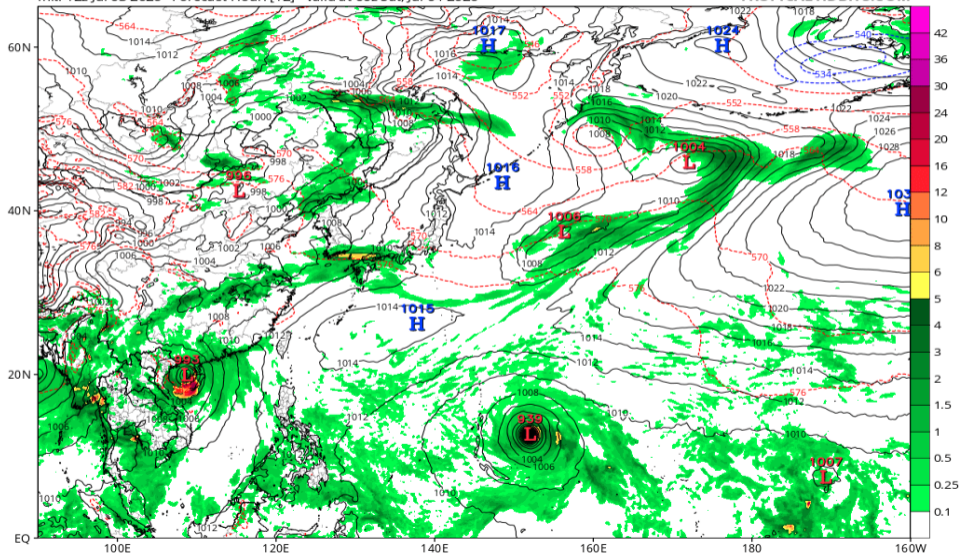


# 地上気圧配置 (GFS 07/04 00Z 予報)

GFS 6-hour Averaged Precip Rate (mm/hr), MSLP (hPa) & 1000-500mb Thickness (dam)

Init: 12z Jul 03 2026 Forecast Hour: [12] valid at 00z Sat, Jul 04 2026

TROPICALTIDBITS.COM

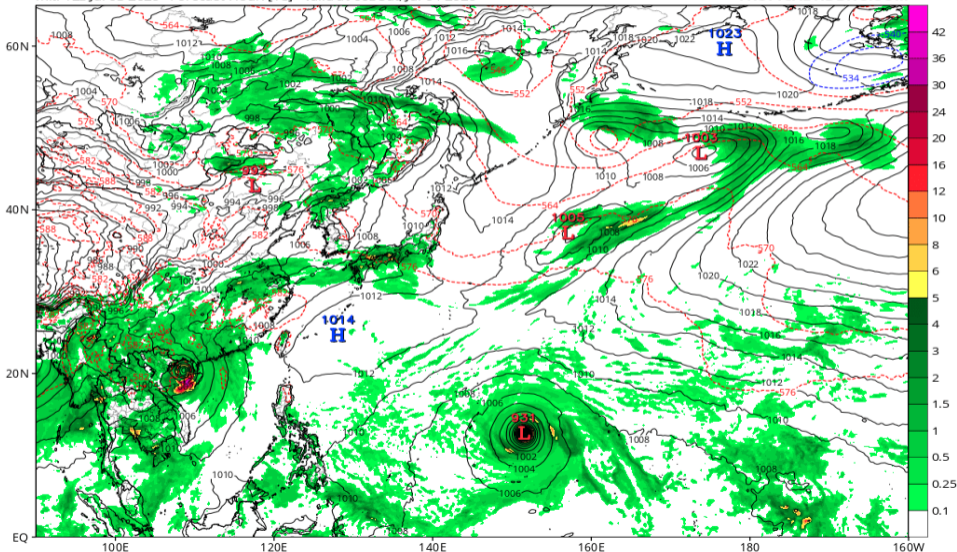


# 地上気圧配置 (GFS 07/04 06Z 予報)

GFS 6-hour Averaged Precip Rate (mm/hr), MSLP (hPa) & 1000-500mb Thickness (dam)

Init: 12z Jul 03 2026 Forecast Hour: [18] valid at 06z Sat, Jul 04 2026

TROPICALTIDBITS.COM

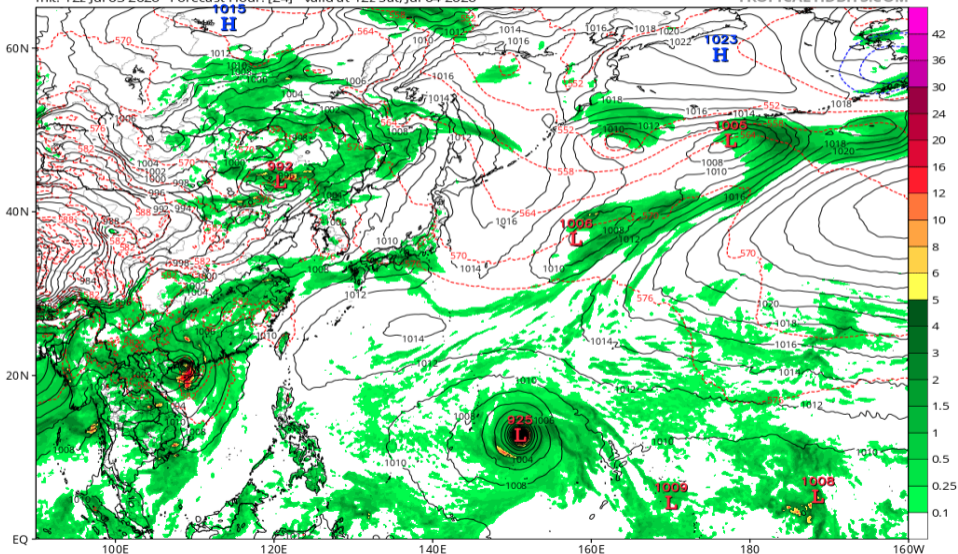


# 地上気圧配置 (GFS 07/04 12Z 予報)

GFS 6-hour Averaged Precip Rate (mm/hr), MSLP (hPa) & 1000-500mb Thickness (dam)

Init: 12z Jul 03 2026 Forecast Hour: [24] valid at 12z Sat, Jul 04 2026

TROPICALTIDBITS.COM

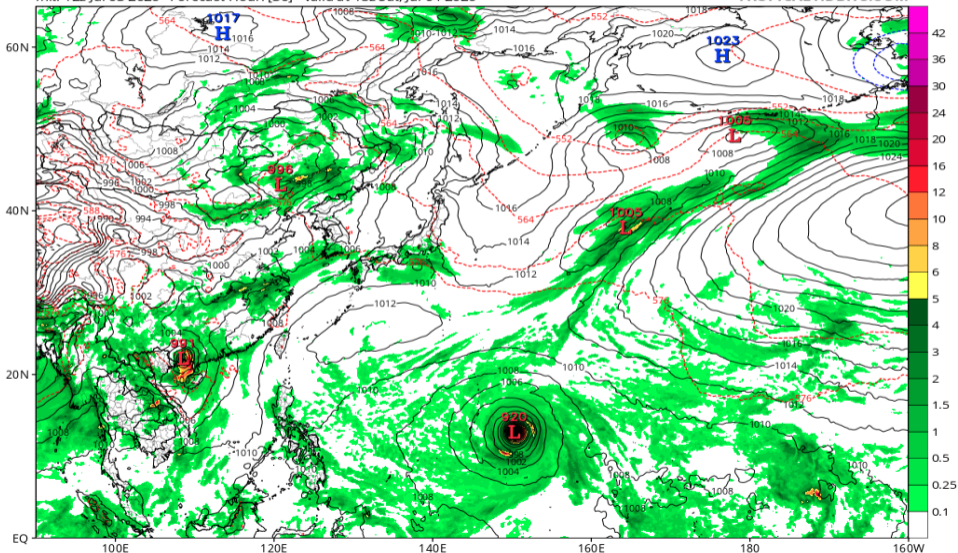


# 地上気圧配置 (GFS 07/04 18Z 予報)

GFS 6-hour Averaged Precip Rate (mm/hr), MSLP (hPa) & 1000-500mb Thickness (dam)

Init: 12z Jul 03 2026 Forecast Hour: [30] valid at 18z Sat, Jul 04 2026

TROPICALTIDBITS.COM

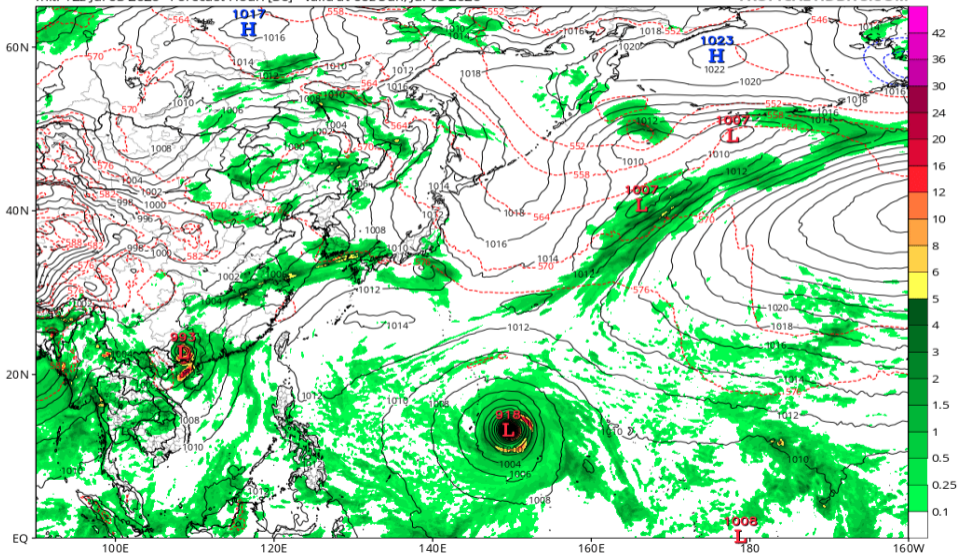


# 地上気圧配置 (GFS 07/05 00Z 予報)

GFS 6-hour Averaged Precip Rate (mm/hr), MSLP (hPa) & 1000-500mb Thickness (dam)

Init: 12z Jul 03 2026 Forecast Hour: [36] valid at 00z Sun, Jul 05 2026

TROPICALTIDBITS.COM

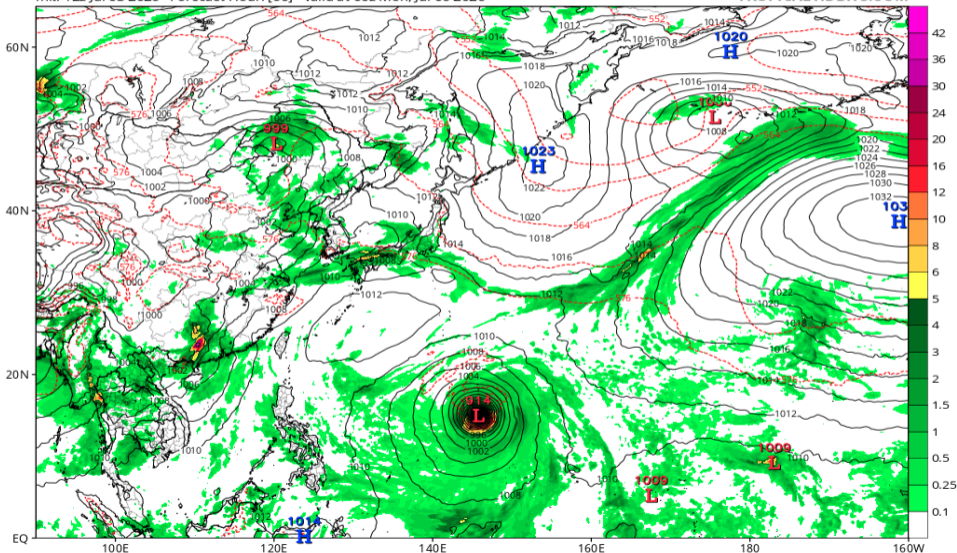


# 地上気圧配置 (GFS 07/06 00Z 予報)

GFS 6-hour Averaged Precip Rate (mm/hr), MSLP (hPa) & 1000-500mb Thickness (dam)

Init: 12z Jul 03 2026 Forecast Hour: [60] valid at 00z Mon, Jul 06 2026

TROPICALTIDBITS.COM

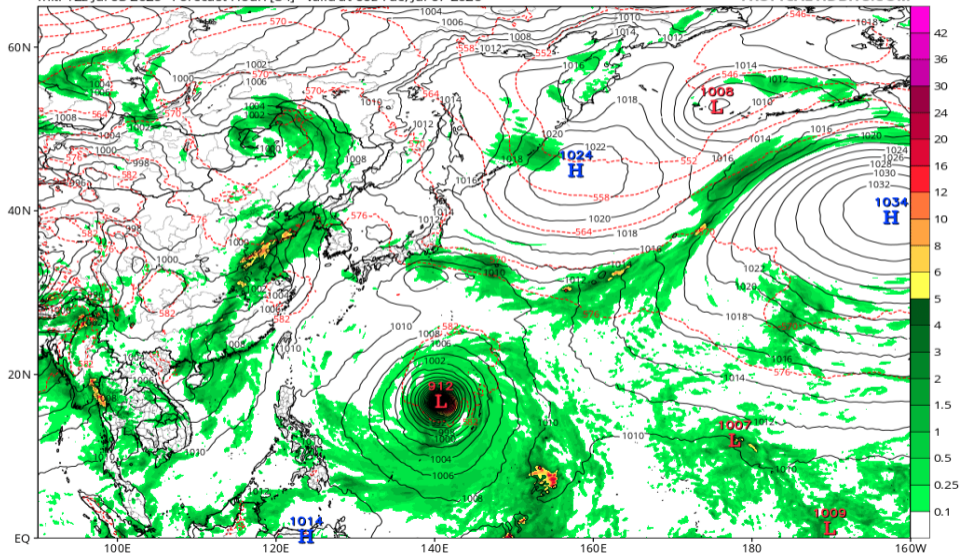


# 地上気圧配置 (GFS 07/07 00Z 予報)

GFS 6-hour Averaged Precip Rate (mm/hr), MSLP (hPa) & 1000-500mb Thickness (dam)

Init: 12z Jul 03 2026 Forecast Hour: [84] valid at 00z Tue, Jul 07 2026

TROPICALTIDBITS.COM

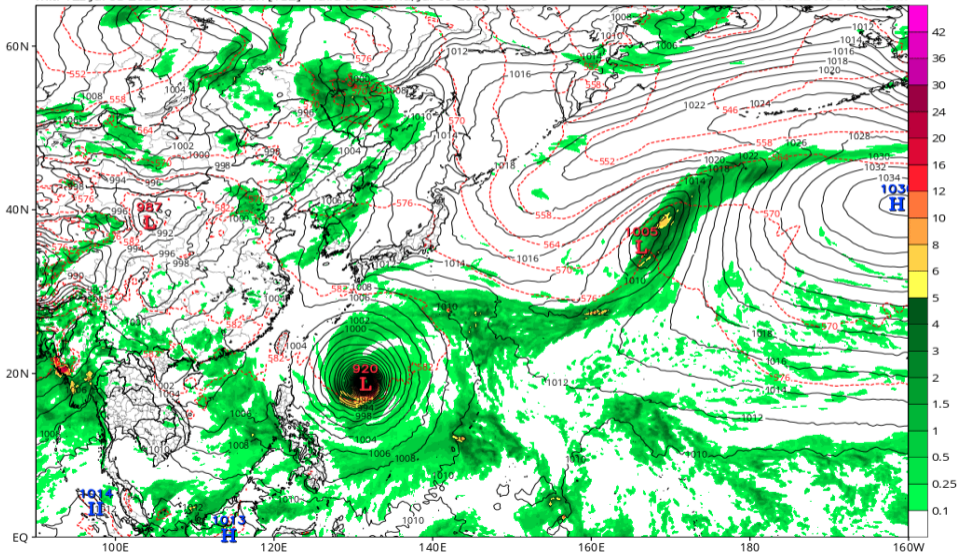


# 地上気圧配置 (GFS 07/09 00Z 予報)

GFS 6-hour Averaged Precip Rate (mm/hr), MSLP (hPa) & 1000-500mb Thickness (dam)

Init: 12z Jul 03 2026 Forecast Hour: [132] valid at 00z Thu, Jul 09 2026

TROPICALTIDBITS.COM

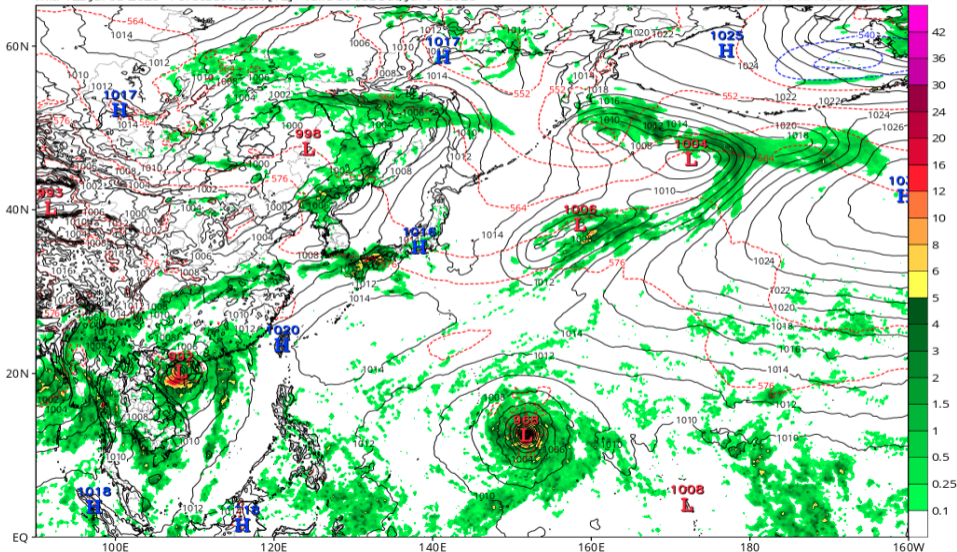


# 地上気圧配置 (ECMWF 07/04 00Z 予報)

ECMWF Instantaneous Precip Rate (mm/hr), MSLP (hPa) & 1000-500mb Thickness (dam)

Init: 12z Jul 03 2026 Forecast Hour: [12] valid at 00z Sat, Jul 04 2026

TROPICALTIDBITS.COM

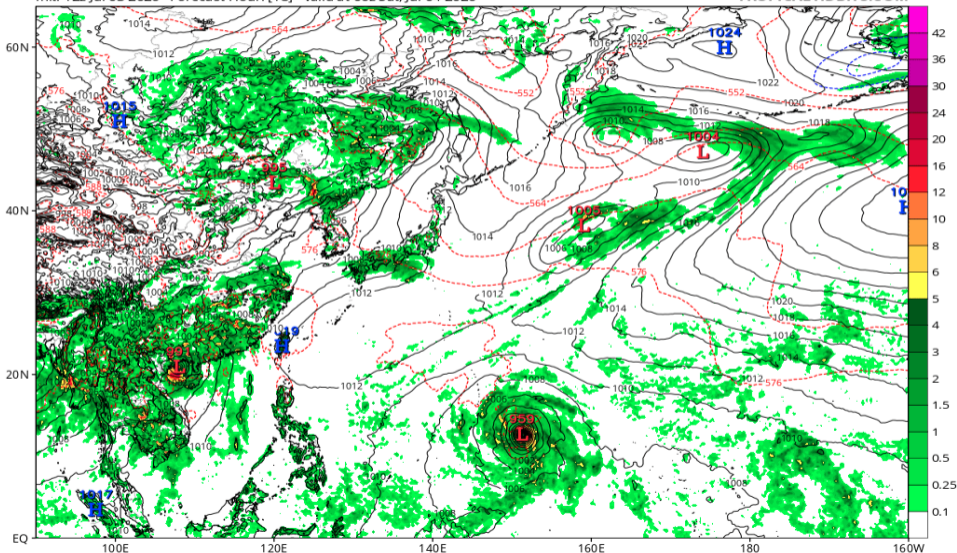


# 地上気圧配置 (ECMWF 07/04 06Z 予報)

ECMWF Instantaneous Precip Rate (mm/hr), MSLP (hPa) & 1000-500mb Thickness (dam)

Init: 12z Jul 03 2026 Forecast Hour: [18] valid at 06z Sat, Jul 04 2026

TROPICALTIDBITS.COM

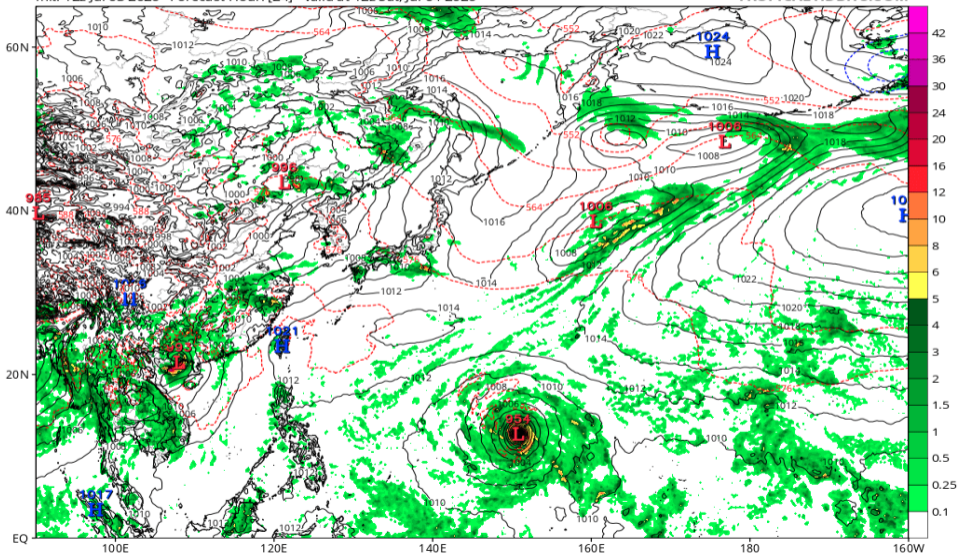


# 地上気圧配置 (ECMWF 07/04 12Z 予報)

ECMWF Instantaneous Precip Rate (mm/hr), MSLP (hPa) & 1000-500mb Thickness (dam)

Init: 12z Jul 03 2026 Forecast Hour: [24] valid at 12z Sat, Jul 04 2026

TROPICALTIDBITS.COM

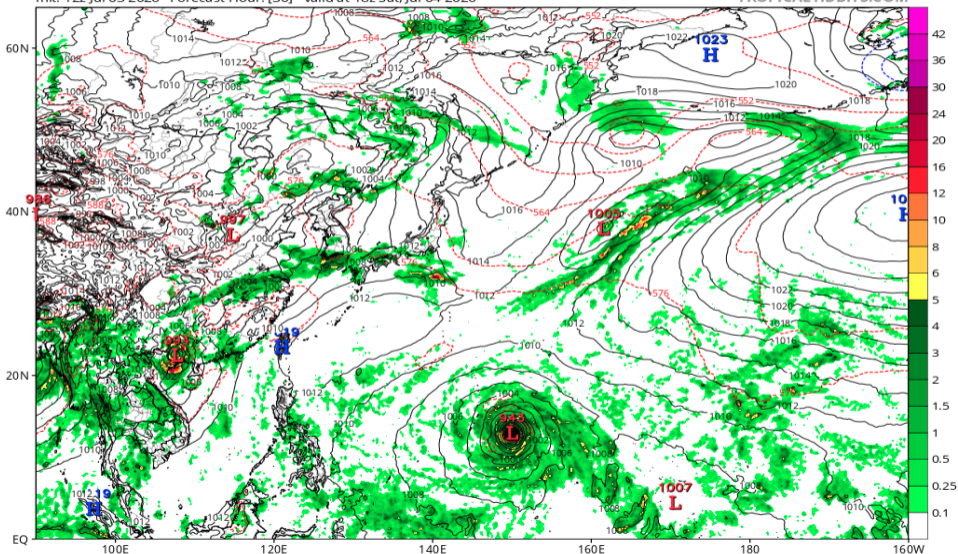


# 地上気圧配置 (ECMWF 07/04 18Z 予報)

ECMWF Instantaneous Precip Rate (mm/hr), MSLP (hPa) & 1000-500mb Thickness (dam)

Init: 12z Jul 03 2026 Forecast Hour: [30] valid at 18z Sat, Jul 04 2026

TROPICALTIDBITS.COM

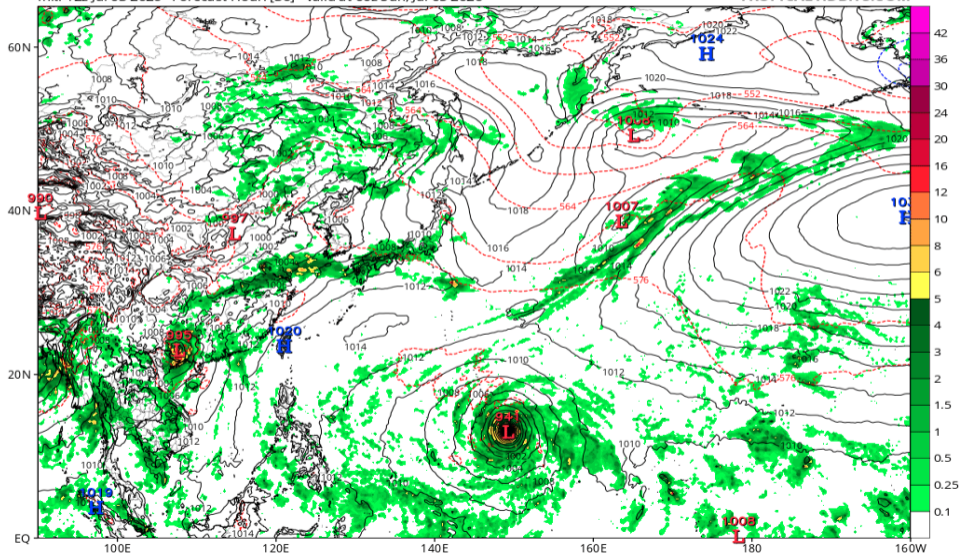


# 地上気圧配置 (ECMWF 07/05 00Z 予報)

ECMWF Instantaneous Precip Rate (mm/hr), MSLP (hPa) & 1000-500mb Thickness (dam)

Init: 12z Jul 03 2026 Forecast Hour: [36] valid at 00z Sun, Jul 05 2026

TROPICALTIDBITS.COM

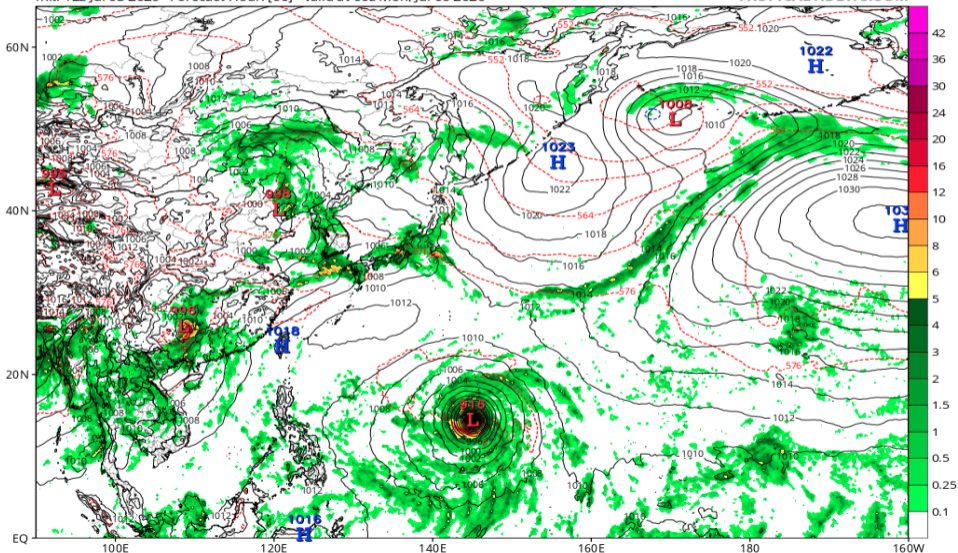


# 地上気圧配置 (ECMWF 07/06 00Z 予報)

ECMWF Instantaneous Precip Rate (mm/hr), MSLP (hPa) & 1000-500mb Thickness (dam)

Init: 12z Jul 03 2026 Forecast Hour: [60] valid at 00z Mon, Jul 06 2026

TROPICALTIDBITS.COM

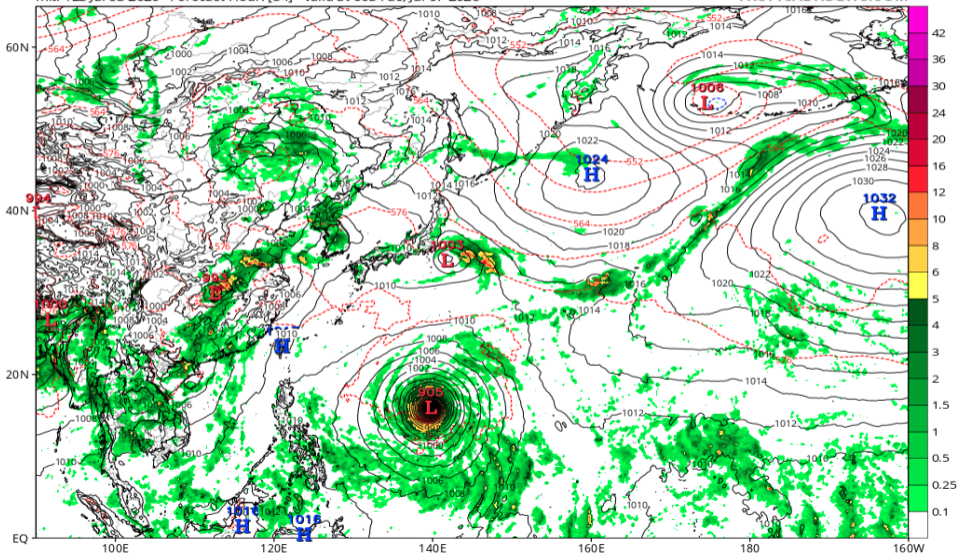


# 地上気圧配置 (ECMWF 07/07 00Z 予報)

ECMWF Instantaneous Precip Rate (mm/hr), MSLP (hPa) & 1000-500mb Thickness (dam)

Init: 12z Jul 03 2026 Forecast Hour: [84] valid at 00z Tue, Jul 07 2026

TROPICALTIDBITS.COM

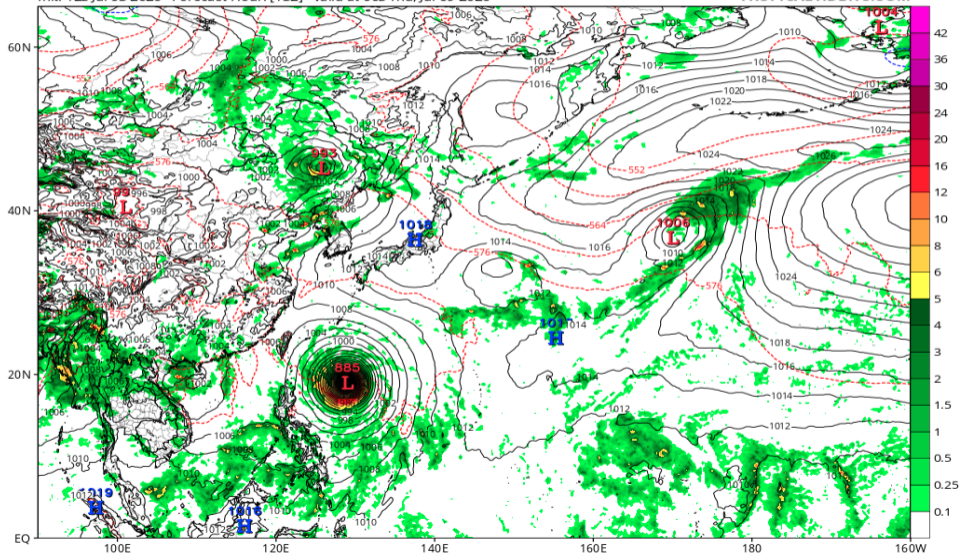


# 地上気圧配置 (ECMWF 07/09 00Z 予報)

ECMWF Instantaneous Precip Rate (mm/hr), MSLP (hPa) & 1000-500mb Thickness (dam)

Init: 12z Jul 03 2026 Forecast Hour: [132] valid at 00z Thu, Jul 09 2026

TROPICALTIDBITS.COM

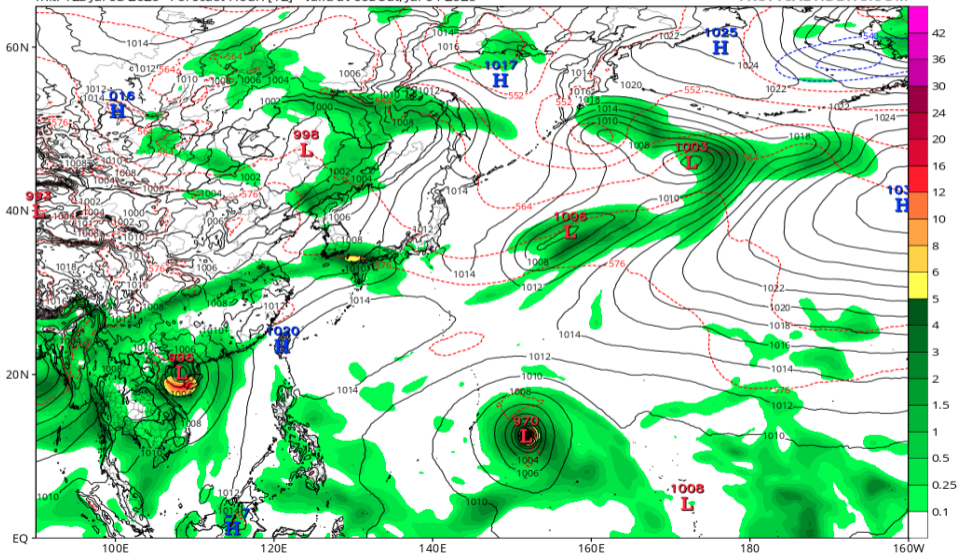


# 地上気圧配置 (AIFS 07/04 00Z 予報)

EC-AIFS 6-hour Averaged Precip Rate (mm/hr), MSLP (hPa) & 1000-500mb Thickness (dam)

Init: 12z Jul 03 2026 Forecast Hour: [12] valid at 00z Sat, Jul 04 2026

TROPICALTIDBITS.COM

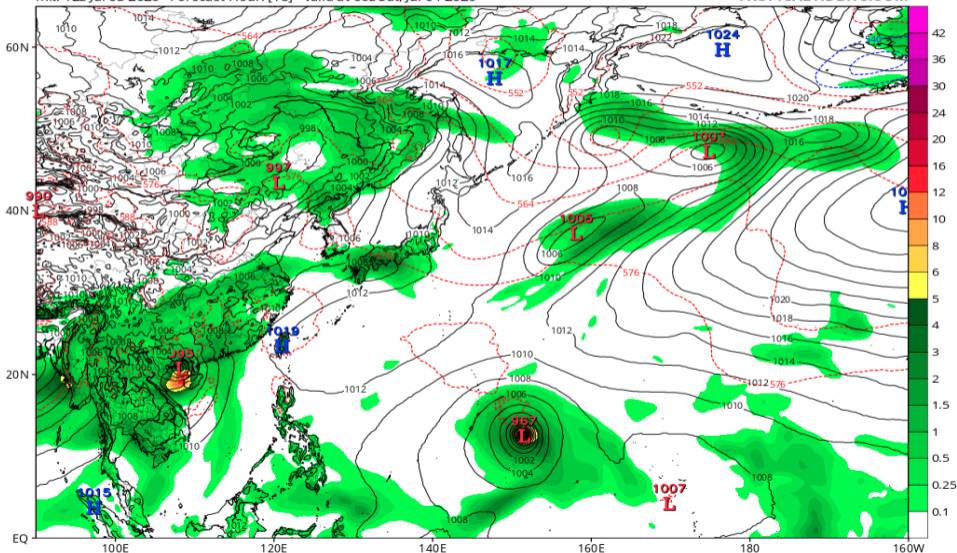


# 地上気圧配置 (AIFS 07/04 06Z 予報)

EC-AIFS 6-hour Averaged Precip Rate (mm/hr), MSLP (hPa) & 1000-500mb Thickness (dam)

Init: 12z Jul 03 2026 Forecast Hour: [18] valid at 06z Sat, Jul 04 2026

TROPICALTIDBITS.COM

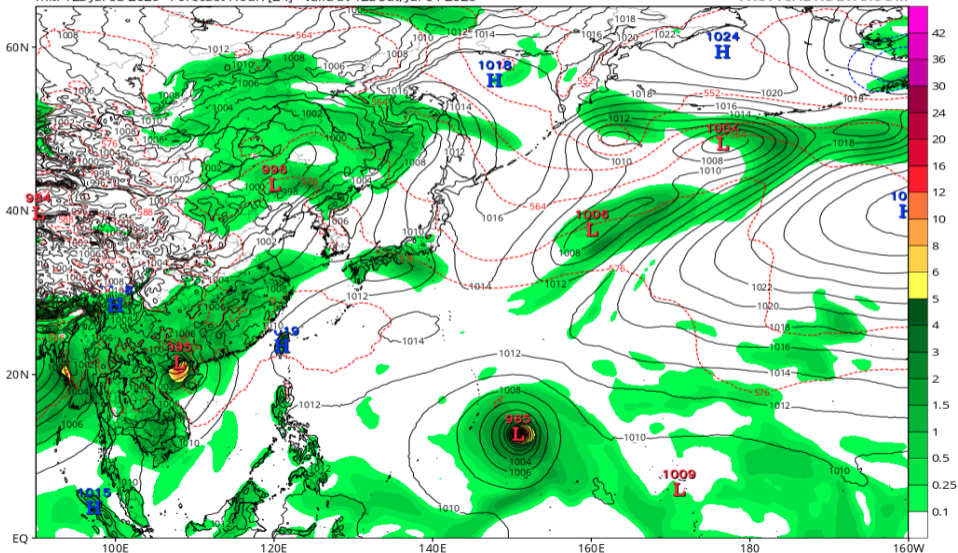


# 地上気圧配置 (AIFS 07/04 12Z 予報)

EC-AIFS 6-hour Averaged Precip Rate (mm/hr), MSLP (hPa) & 1000-500mb Thickness (dam)

Init: 12z Jul 03 2026 Forecast Hour: [24] valid at 12z Sat, Jul 04 2026

TROPICALTIDBITS.COM

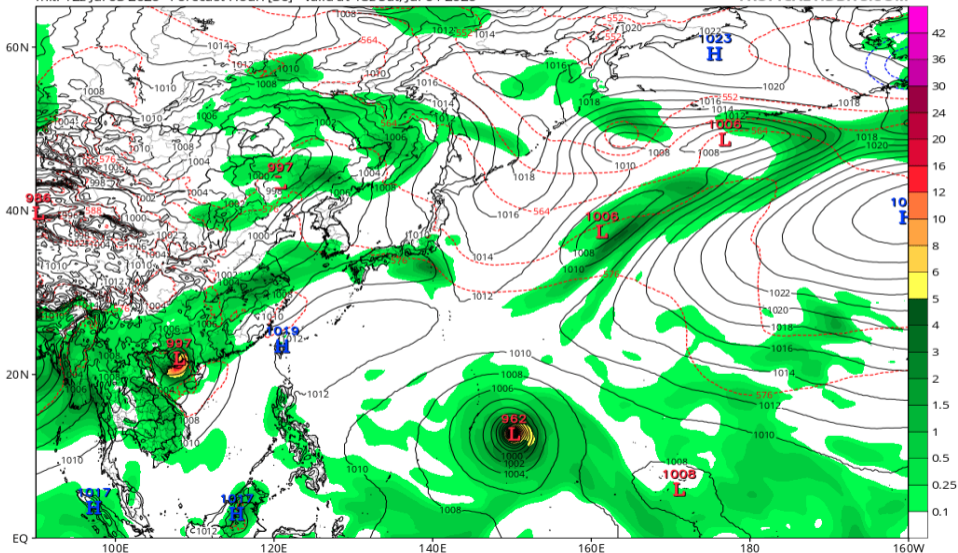


# 地上気圧配置 (AIFS 07/04 18Z 予報)

EC-AIFS 6-hour Averaged Precip Rate (mm/hr), MSLP (hPa) & 1000-500mb Thickness (dam)

Init: 12z Jul 03 2026 Forecast Hour: [30] valid at 18z Sat, Jul 04 2026

TROPICALTIDBITS.COM

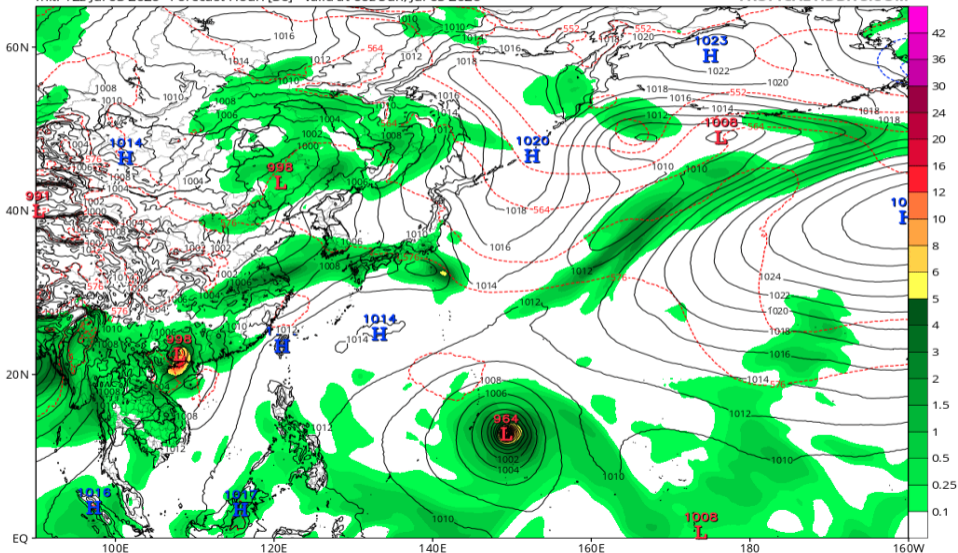


# 地上気圧配置 (AIFS 07/05 00Z 予報)

EC-AIFS 6-hour Averaged Precip Rate (mm/hr), MSLP (hPa) & 1000-500mb Thickness (dam)

Init: 12z Jul 03 2026 Forecast Hour: [36] valid at 00z Sun, Jul 05 2026

TROPICALTIDBITS.COM

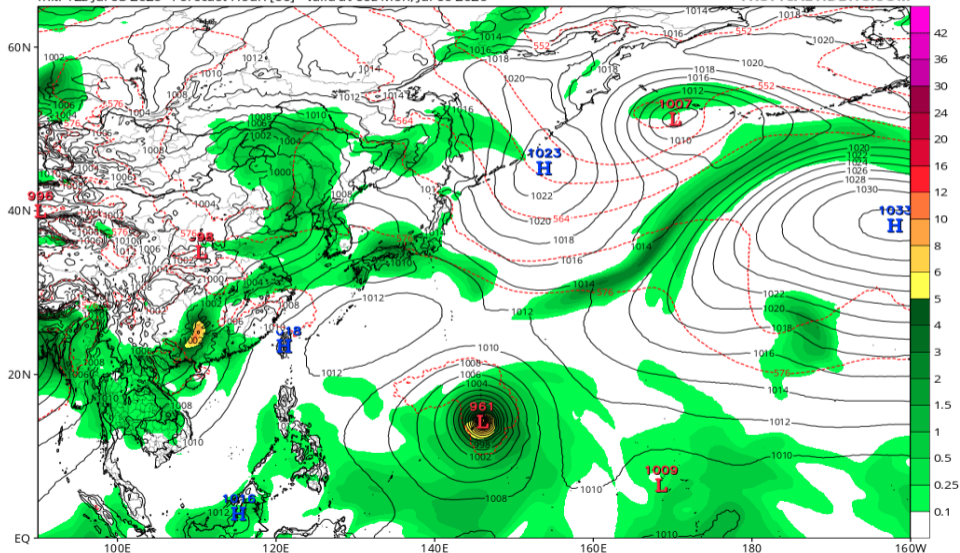


# 地上気圧配置 (AIFS 07/06 00Z 予報)

EC-AIFS 6-hour Averaged Precip Rate (mm/hr), MSLP (hPa) & 1000-500mb Thickness (dam)

Init: 12z Jul 03 2026 Forecast Hour: [60] valid at 00z Mon, Jul 06 2026

TROPICALTIDBITS.COM

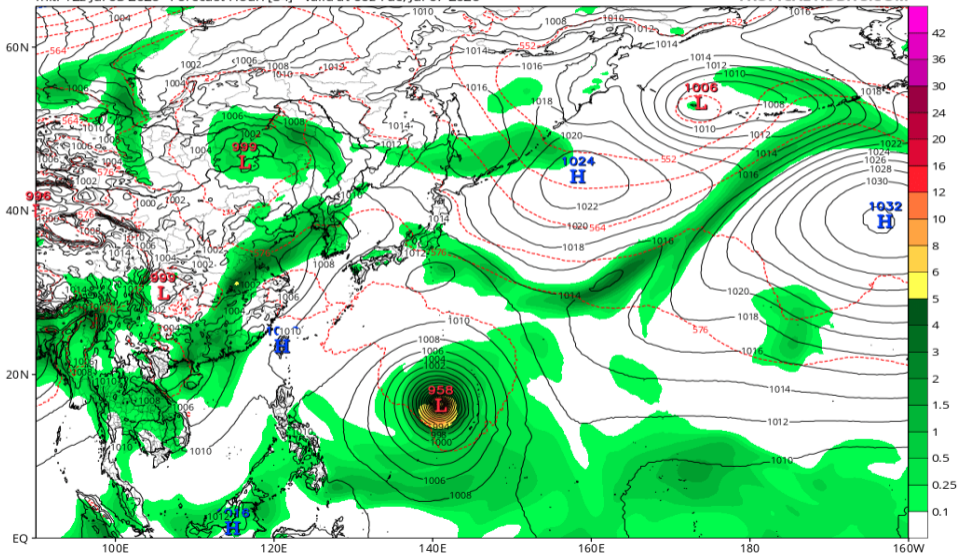


# 地上気圧配置 (AIFS 07/07 00Z 予報)

EC-AIFS 6-hour Averaged Precip Rate (mm/hr), MSLP (hPa) & 1000-500mb Thickness (dam)

Init: 12z Jul 03 2026 Forecast Hour: [84] valid at 00z Tue, Jul 07 2026

TROPICALTIDBITS.COM

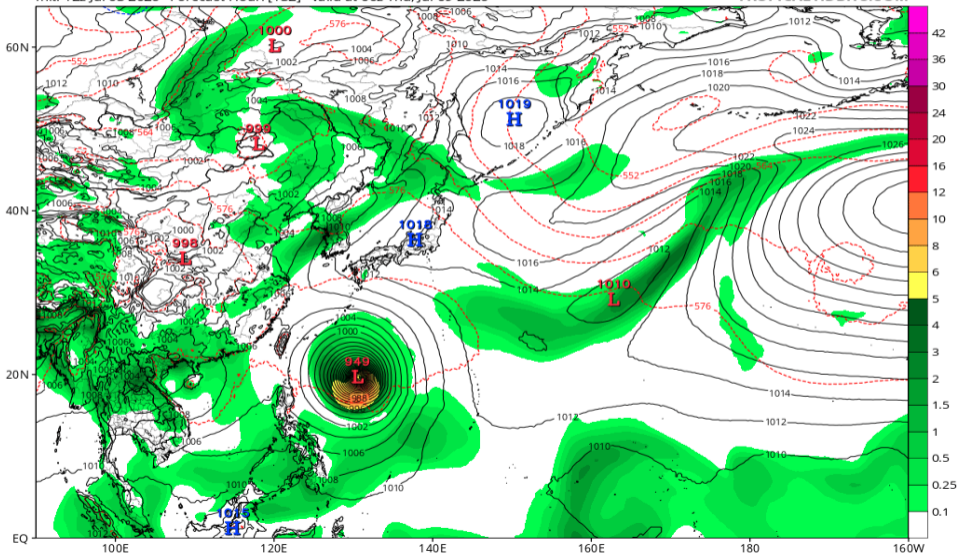


# 地上気圧配置 (AIFS 07/09 00Z 予報)

EC-AIFS 6-hour Averaged Precip Rate (mm/hr), MSLP (hPa) & 1000-500mb Thickness (dam)

Init: 12z Jul 03 2026 Forecast Hour: [132] valid at 00z Thu, Jul 09 2026

TROPICALTIDBITS.COM

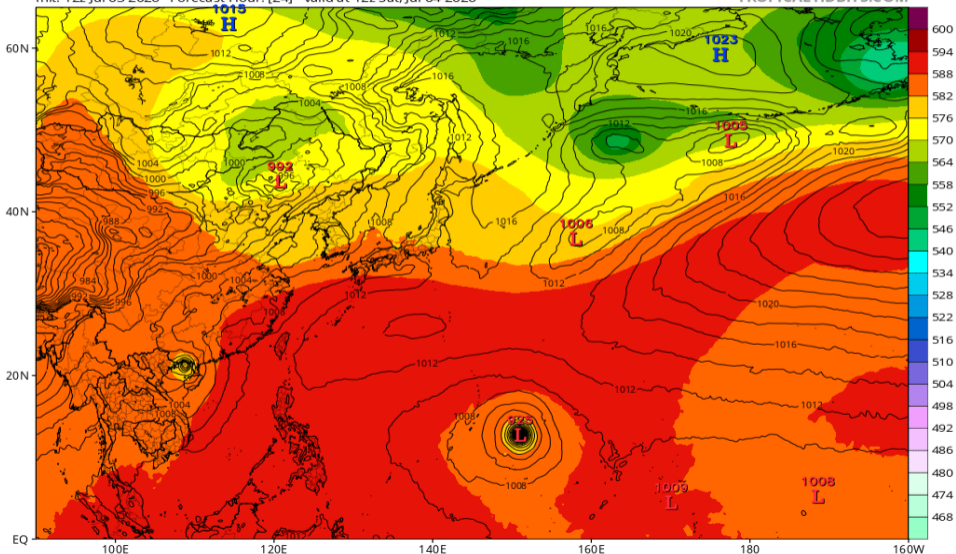


# Z500/地上気圧配置 (GFS 07/04 12Z 予報)

GFS 500mb Geopotential Height (dam) & MSLP (mb)

Init: 12z Jul 03 2026 Forecast Hour: [24] valid at 12z Sat, Jul 04 2026

TROPICALTIDBITS.COM

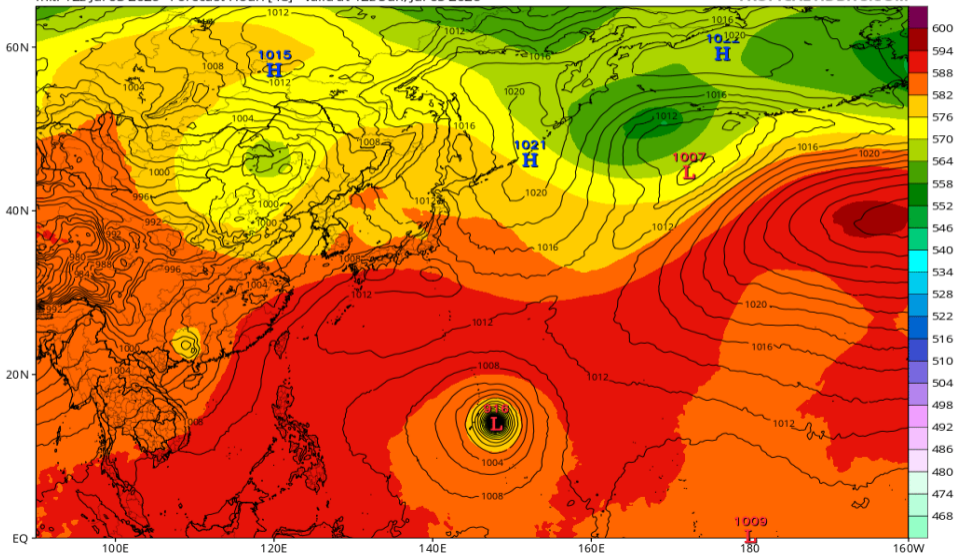


# Z500/地上気圧配置 (GFS 07/05 12Z 予報)

GFS 500mb Geopotential Height (dam) & MSLP (mb)

Init: 12z Jul 03 2026 Forecast Hour: [48] valid at 12z Sun, Jul 05 2026

TROPICALTIDBITS.COM

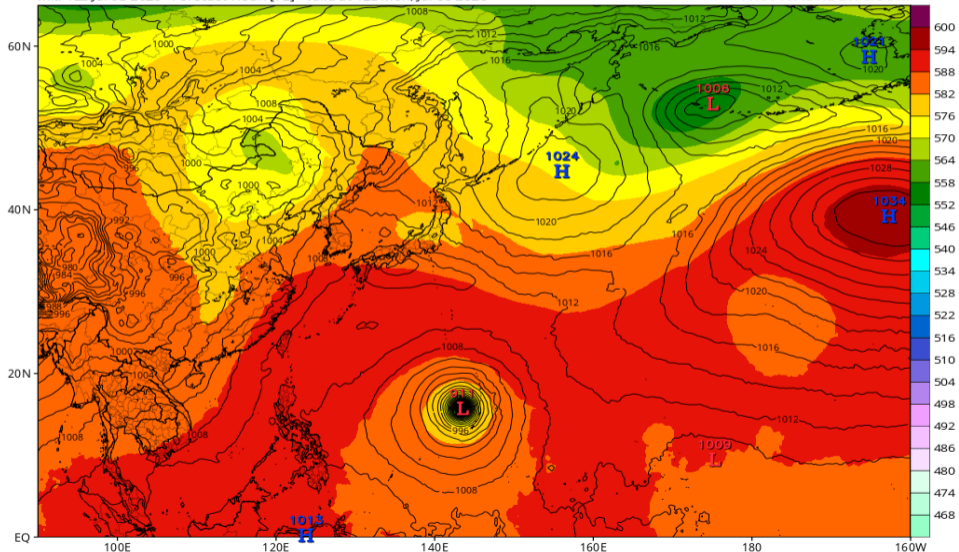


# Z500/地上気圧配置 (GFS 07/06 12Z 予報)

GFS 500mb Geopotential Height (dam) & MSLP (mb)

Init: 12z Jul 03 2026 Forecast Hour: [72] valid at 12Z Mon, Jul 06 2026

TROPICALTIDBITS.COM

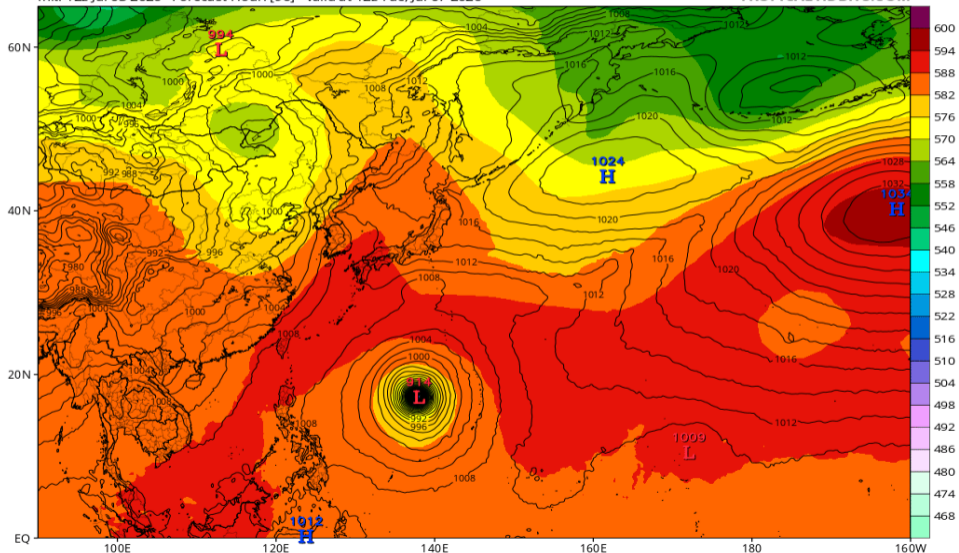


# Z500/地上気圧配置 (GFS 07/07 12Z 予報)

GFS 500mb Geopotential Height (dam) & MSLP (mb)

Init: 12z Jul 03 2026 Forecast Hour: [96] valid at 12z Tue, Jul 07 2026

TROPICALTIDBITS.COM

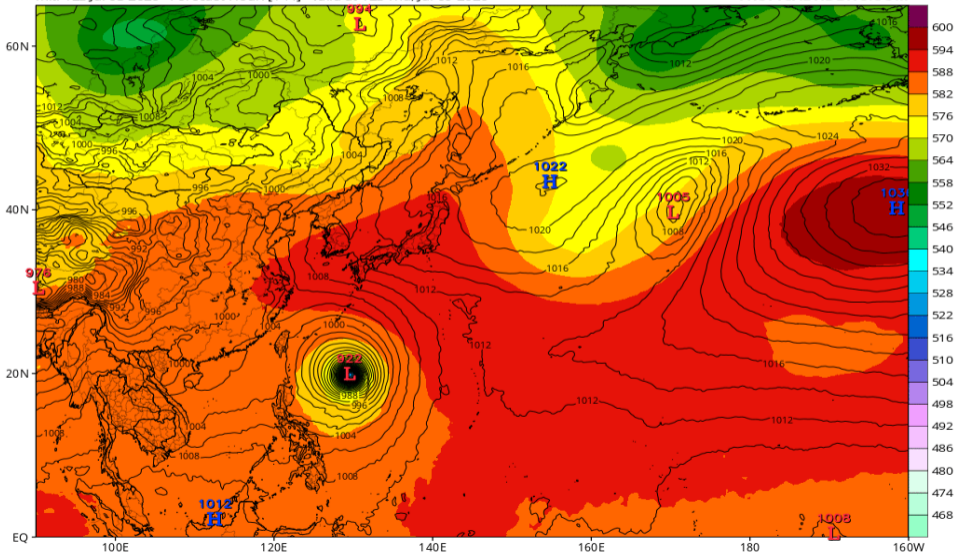


# Z500/地上気圧配置 (GFS 07/09 12Z 予報)

GFS 500mb Geopotential Height (dam) & MSLP (mb)

Init: 12z Jul 03 2026 Forecast Hour: [144] valid at 12z Thu, Jul 09 2026

TROPICALTIDBITS.COM

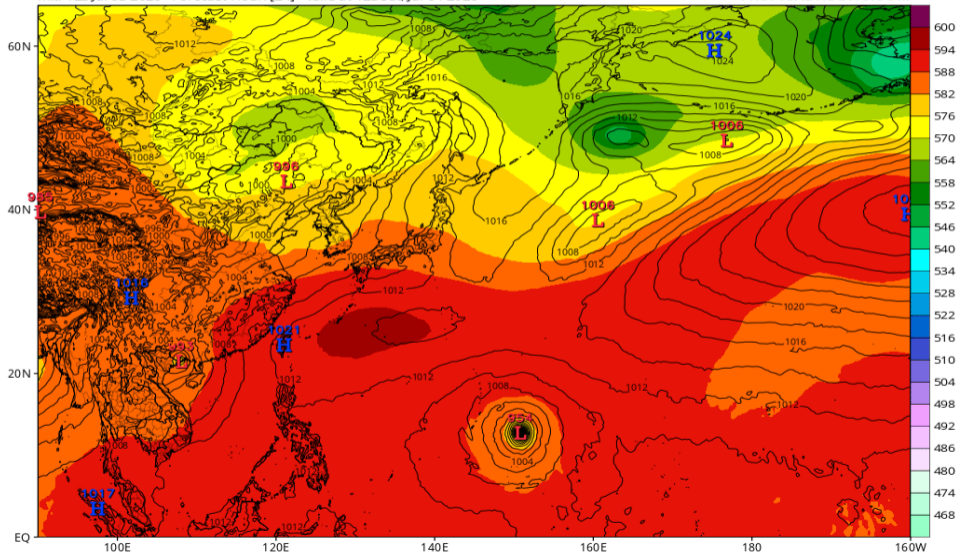


# Z500/地上気圧配置 (ECMWF 07/04 12Z 予報)

ECMWF 500mb Geopotential Height (dam) & MSLP (mb)

Init: 12z Jul 03 2026 Forecast Hour: [24] valid at 12z Sat, Jul 04 2026

TROPICALTIDBITS.COM

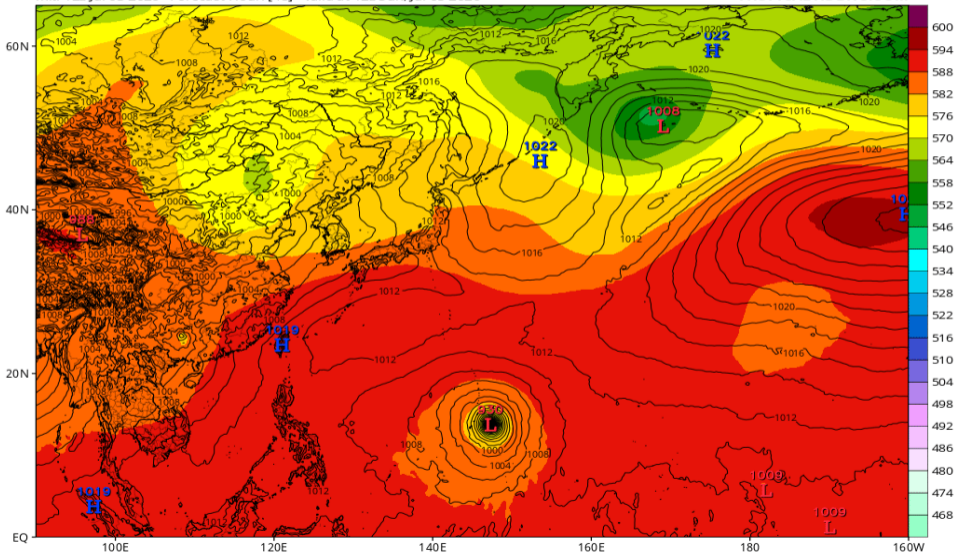


# Z500/地上気圧配置 (ECMWF 07/05 12Z 予報)

ECMWF 500mb Geopotential Height (dam) & MSLP (mb)

Init: 12z Jul 03 2026 Forecast Hour: [48] valid at 12z Sun, Jul 05 2026

TROPICALTIDBITS.COM

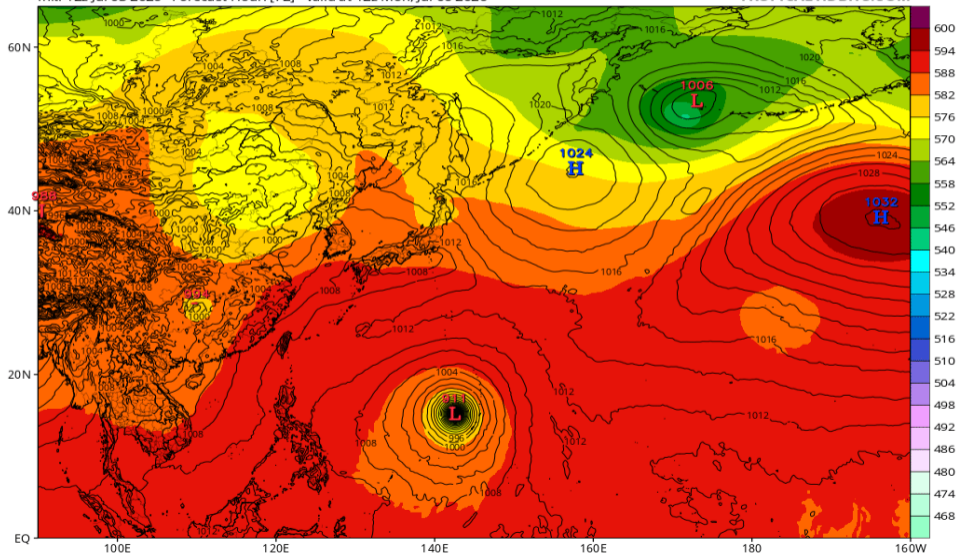


# Z500/地上気圧配置 (ECMWF 07/06 12Z 予報)

ECMWF 500mb Geopotential Height (dam) & MSLP (mb)

Init: 12z Jul 03 2026 Forecast Hour: [72] valid at 12z Mon, Jul 06 2026

TROPICALTIDBITS.COM

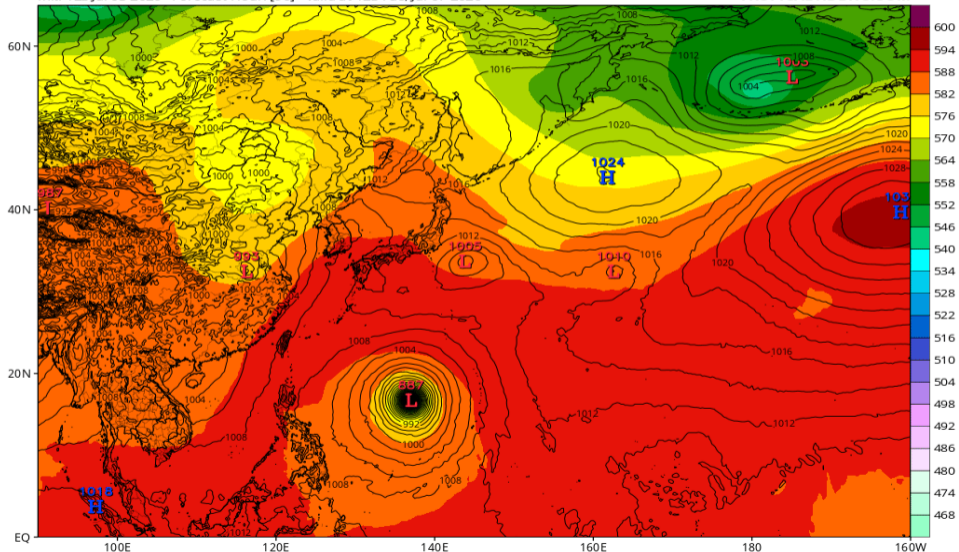


# Z500/地上気圧配置 (ECMWF 07/07 12Z 予報)

ECMWF 500mb Geopotential Height (dam) & MSLP (mb)

Init: 12z Jul 03 2026 Forecast Hour: [96] valid at 12z Tue, Jul 07 2026

TROPICALTIDBITS.COM

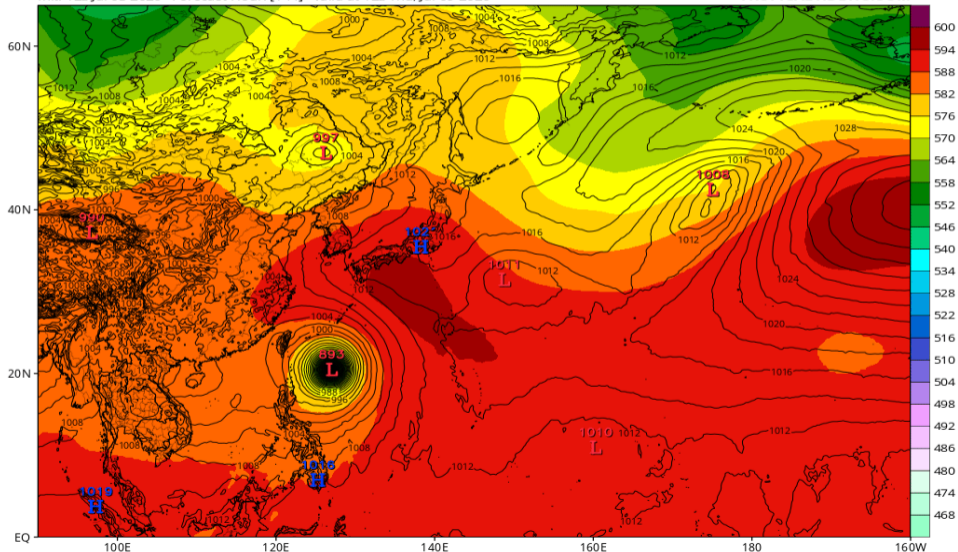


# Z500/地上気圧配置 (ECMWF 07/09 12Z 予報)

ECMWF 500mb Geopotential Height (dam) & MSLP (mb)

Init: 12z Jul 03 2026 Forecast Hour: [144] valid at 12z Thu, Jul 09 2026

TROPICALTIDBITS.COM

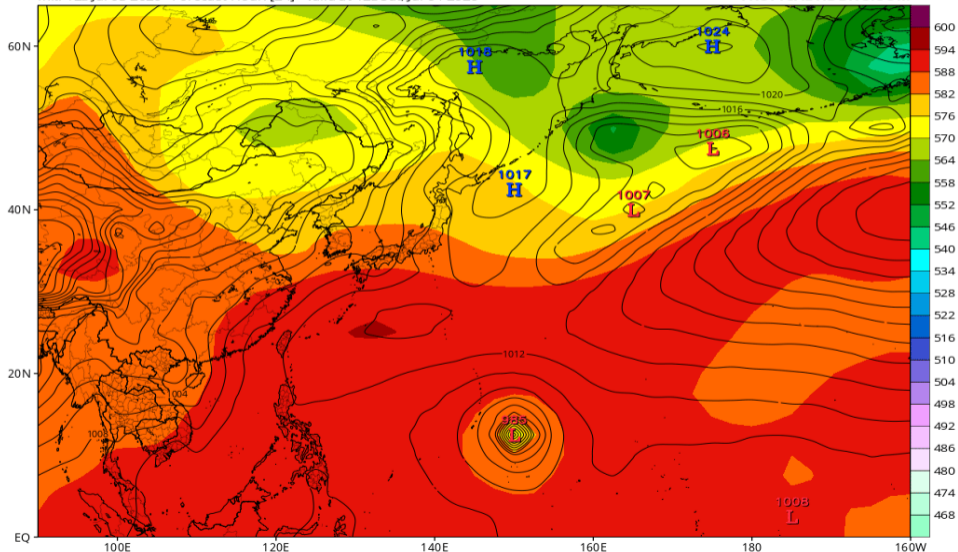


# Z500/地上気圧配置 (JMA-GSM 07/04 12Z 予報)

JMA 500mb Geopotential Height (dam) & MSLP (mb)

Init: 12z Jul 03 2026 Forecast Hour: [24] valid at 12z Sat, Jul 04 2026

TROPICALTIDBITS.COM

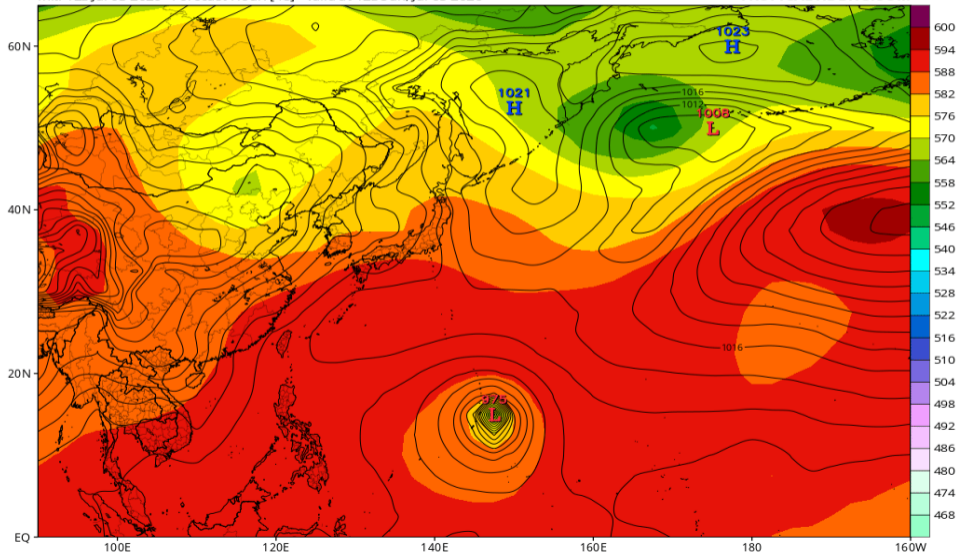


# Z500/地上気圧配置 (JMA-GSM 07/05 12Z 予報)

JMA 500mb Geopotential Height (dam) & MSLP (mb)

Init: 12z Jul 03 2026 Forecast Hour: [48] valid at 12z Sun, Jul 05 2026

TROPICALTIDBITS.COM

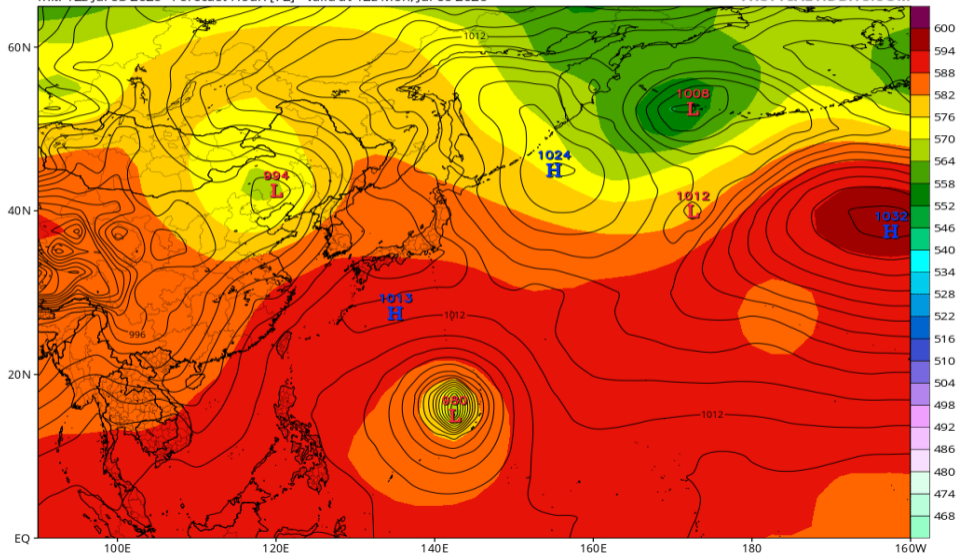


# Z500/地上気圧配置 (JMA-GSM 07/06 12Z 予報)

JMA 500mb Geopotential Height (dam) & MSLP (mb)

Init: 12z Jul 03 2026 Forecast Hour: [72] valid at 12z Mon, Jul 06 2026

TROPICALTIDBITS.COM

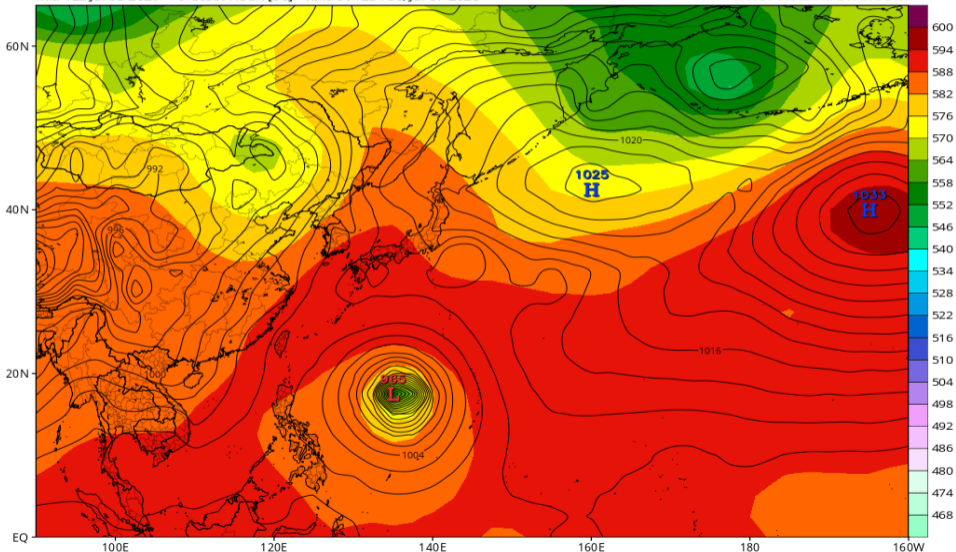


# Z500/地上気圧配置 (JMA-GSM 07/07 12Z 予報)

JMA 500mb Geopotential Height (dam) & MSLP (mb)

Init: 12z Jul 03 2026 Forecast Hour: [96] valid at 12z Tue, Jul 07 2026

TROPICALTIDBITS.COM

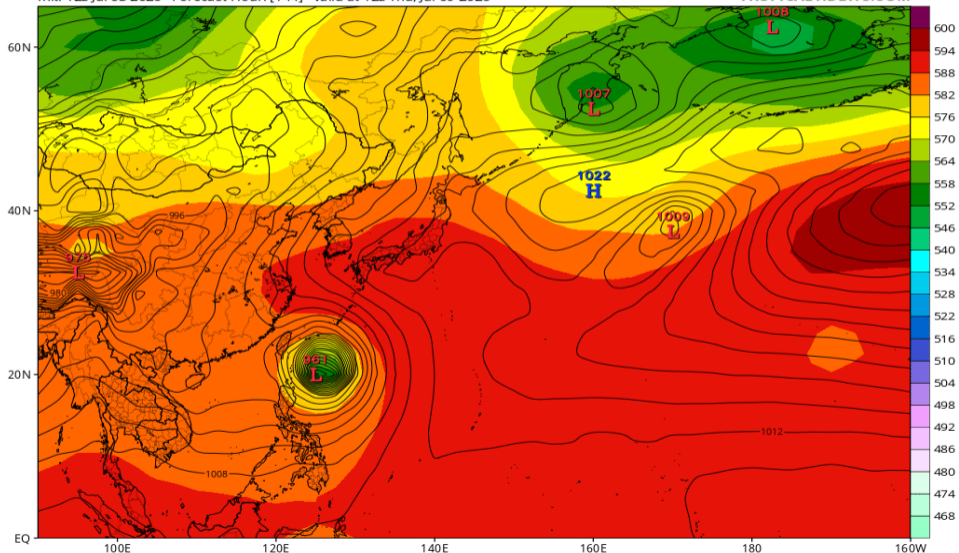


# Z500/地上気圧配置 (JMA-GSM 07/09 12Z 予報)

JMA 500mb Geopotential Height (dam) & MSLP (mb)

Init: 12z Jul 03 2026 Forecast Hour: [144] valid at 12z Thu, Jul 09 2026

TROPICALTIDBITS.COM

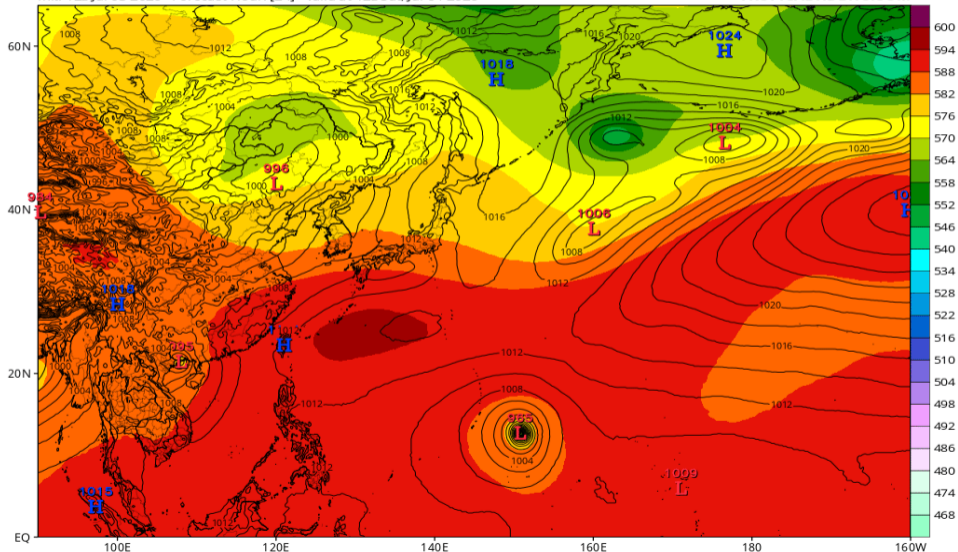


# Z500/地上気圧配置 (AIFS 07/04 12Z 予報)

EC-AIFS 500mb Geopotential Height (dam) & MSLP (mb)

Init: 12z Jul 03 2026 Forecast Hour: [24] valid at 12z Sat, Jul 04 2026

TROPICALTIDBITS.COM

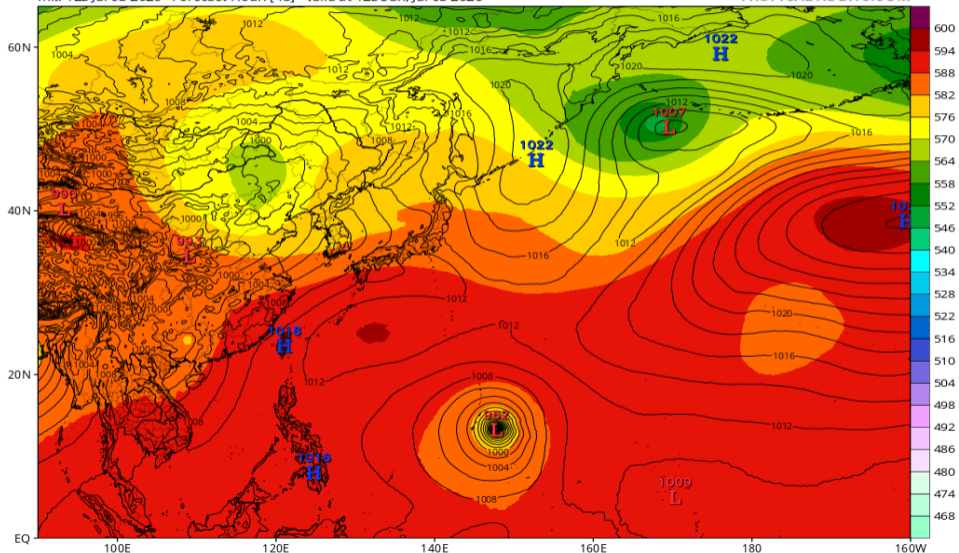


# Z500/地上気圧配置 (AIFS 07/05 12Z 予報)

EC-AIFS 500mb Geopotential Height (dam) & MSLP (mb)

Init: 12z Jul 03 2026 Forecast Hour: [48] valid at 12z Sun, Jul 05 2026

TROPICALTIDBITS.COM

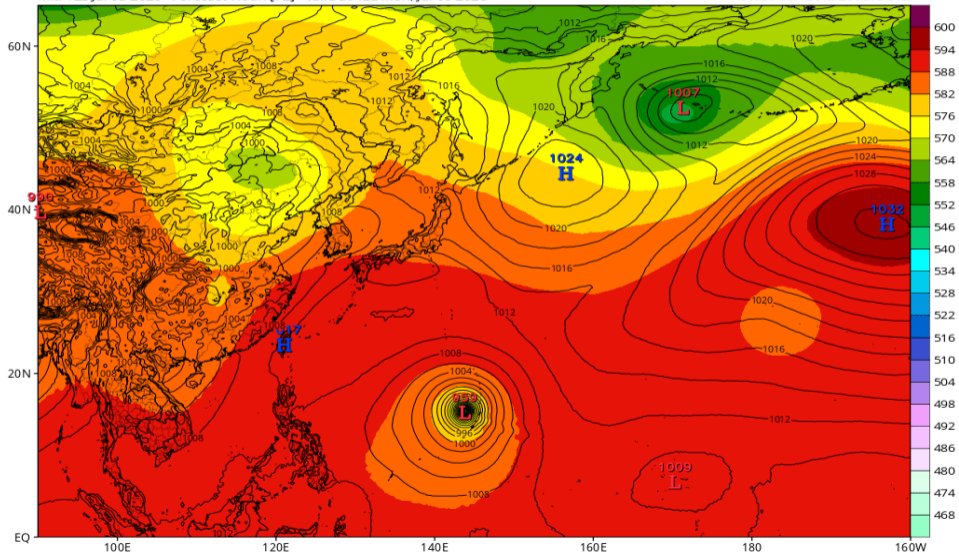


# Z500/地上気圧配置 (AIFS 07/06 12Z 予報)

EC-AIFS 500mb Geopotential Height (dam) & MSLP (mb)

Init: 12z Jul 03 2026 Forecast Hour: [72] valid at 12z Mon, Jul 06 2026

TROPICALTIDBITS.COM

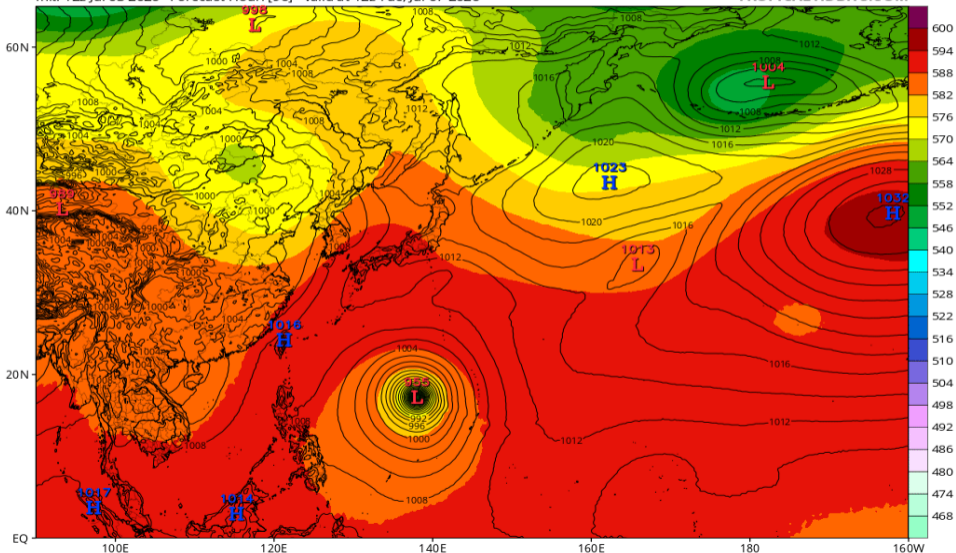


# Z500/地上気圧配置 (AIFS 07/07 12Z 予報)

EC-AIFS 500mb Geopotential Height (dam) & MSLP (mb)

Init: 12z Jul 03 2026 Forecast Hour: [96] valid at 12z Tue, Jul 07 2026

TROPICALTIDBITS.COM

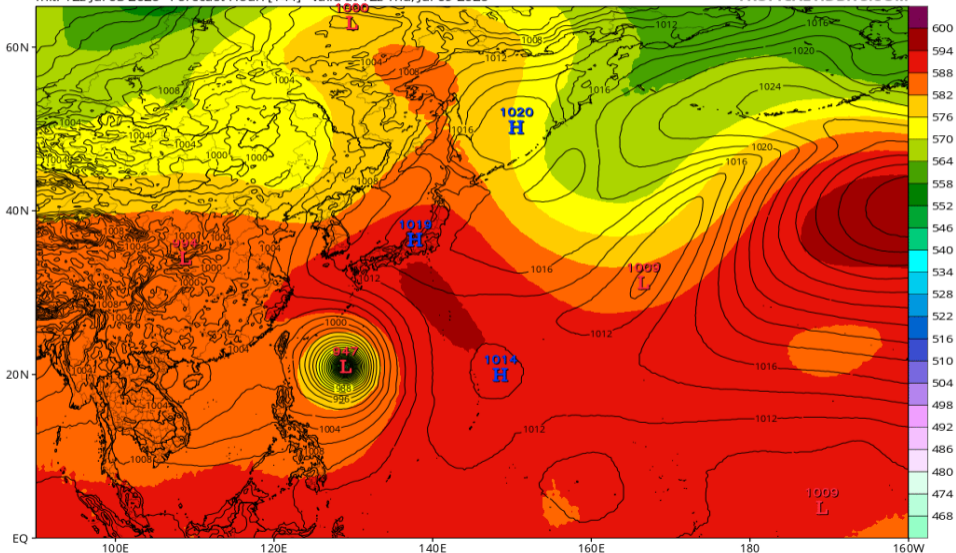


# Z500/地上気圧配置 (AIFS 07/09 12Z 予報)

EC-AIFS 500mb Geopotential Height (dam) & MSLP (mb)

Init: 12z Jul 03 2026 Forecast Hour: [144] valid at 12z Thu, Jul 09 2026

TROPICALTIDBITS.COM

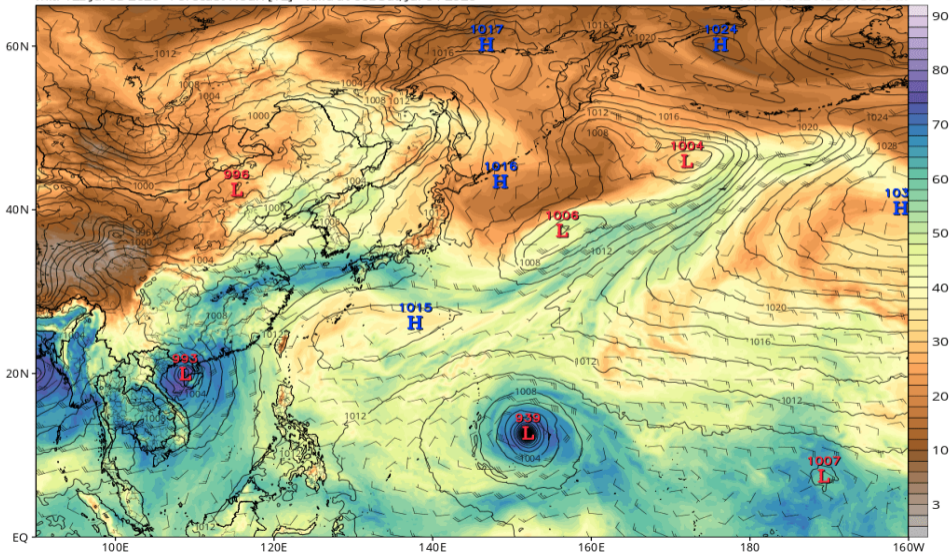


# 可降水量 (GFS 07/04 00Z 予報)

GFS MSLP (mb), Total Precipitable Water (mm), and 850mb Wind (kt)

Init: 12z Jul 03 2026 Forecast Hour: [12] valid at 00z Sat, Jul 04 2026

TROPICALTIDBITS.COM

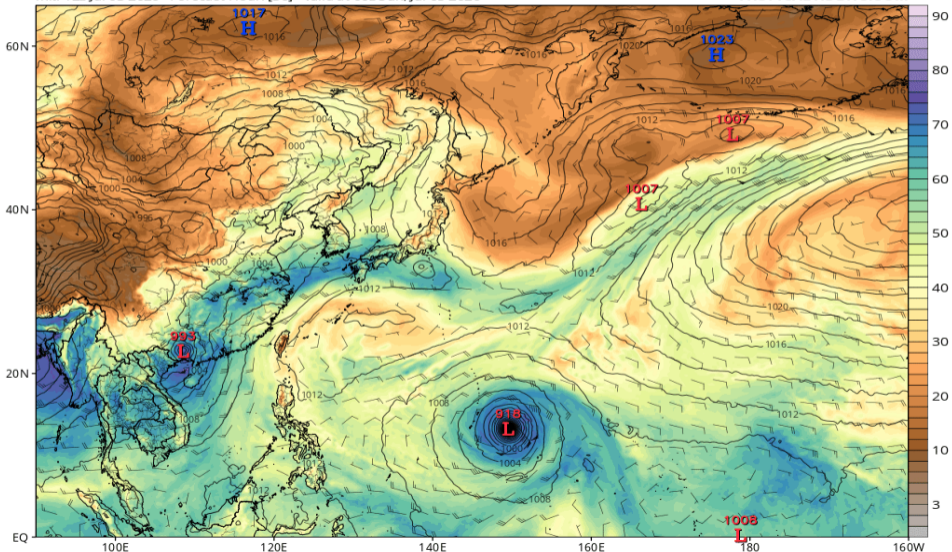


# 可降水量 (GFS 07/05 00Z 予報)

GFS MSLP (mb), Total Precipitable Water (mm), and 850mb Wind (kt)

Init: 12z Jul 03 2026 Forecast Hour: [36] valid at 00z Sun, Jul 05 2026

TROPICALTIDBITS.COM

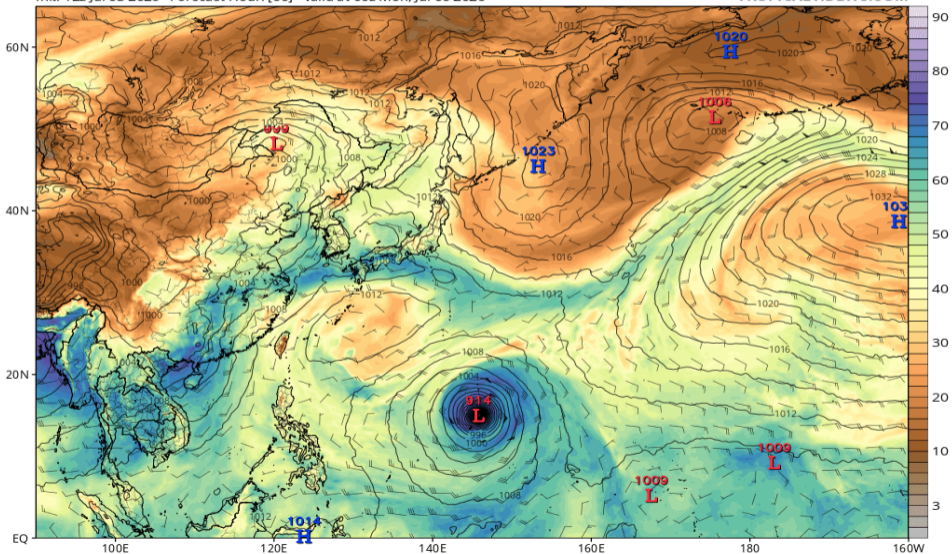


# 可降水量 (GFS 07/06 00Z 予報)

GFS MSLP (mb), Total Precipitable Water (mm), and 850mb Wind (kt)

Init: 12z Jul 03 2026 Forecast Hour: [60] valid at 00z Mon, Jul 06 2026

TROPICALTIDBITS.COM

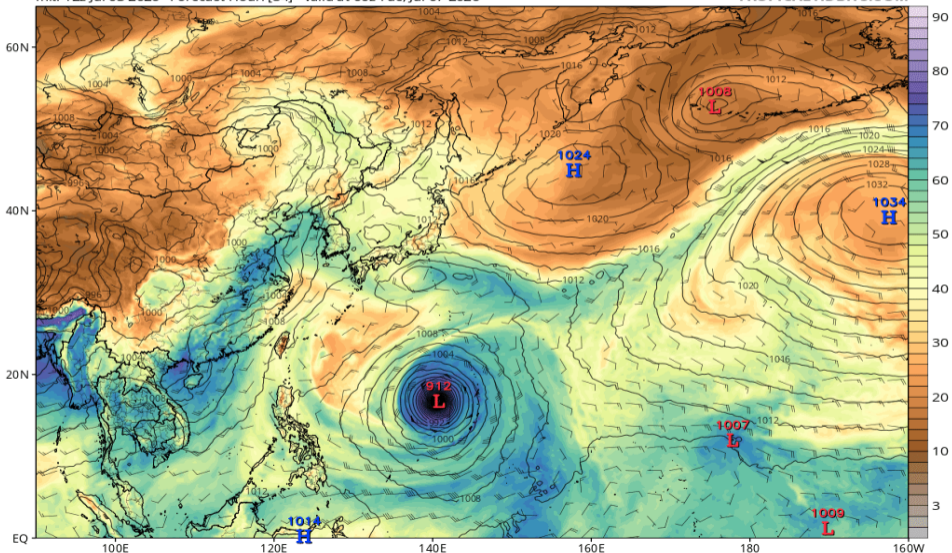


# 可降水量 (GFS 07/07 00Z 予報)

GFS MSLP (mb), Total Precipitable Water (mm), and 850mb Wind (kt)

Init: 12z Jul 03 2026 Forecast Hour: [84] valid at 00z Tue, Jul 07 2026

TROPICALTIDBITS.COM

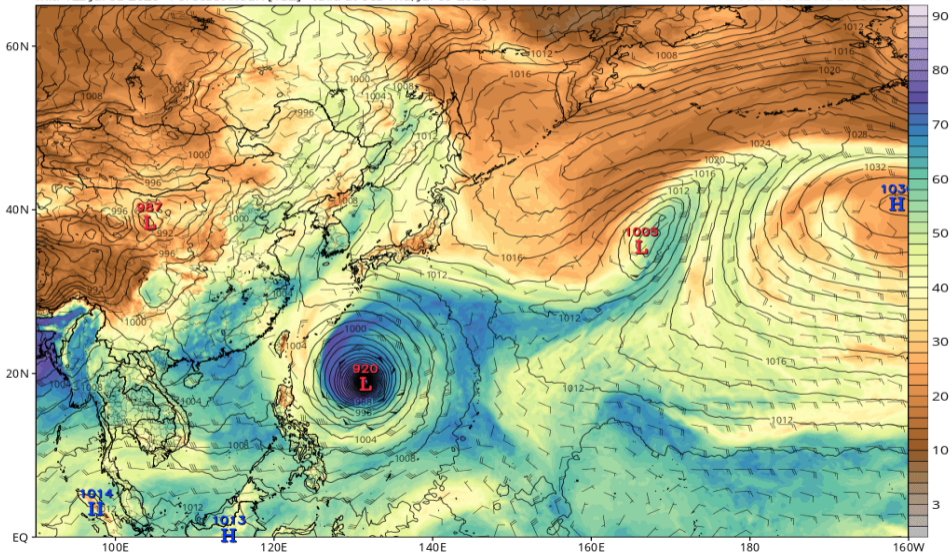


# 可降水量 (GFS 07/09 00Z 予報)

GFS MSLP (mb), Total Precipitable Water (mm), and 850mb Wind (kt)

Init: 12z Jul 03 2026 Forecast Hour: [132] valid at 00z Thu, Jul 09 2026

TROPICALTIDBITS.COM

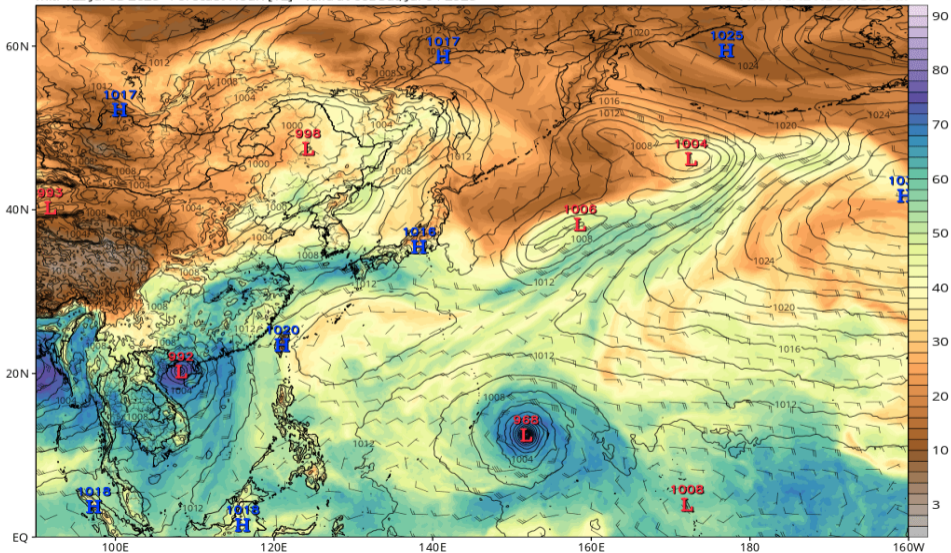


# 可降水量 (ECMWF 07/04 00Z 予報)

ECMWF MSLP (mb), Total Precipitable Water (mm), and 850mb Wind (kt)

Init: 12z Jul 03 2026 Forecast Hour: [12] valid at 00z Sat, Jul 04 2026

TROPICALTIDBITS.COM

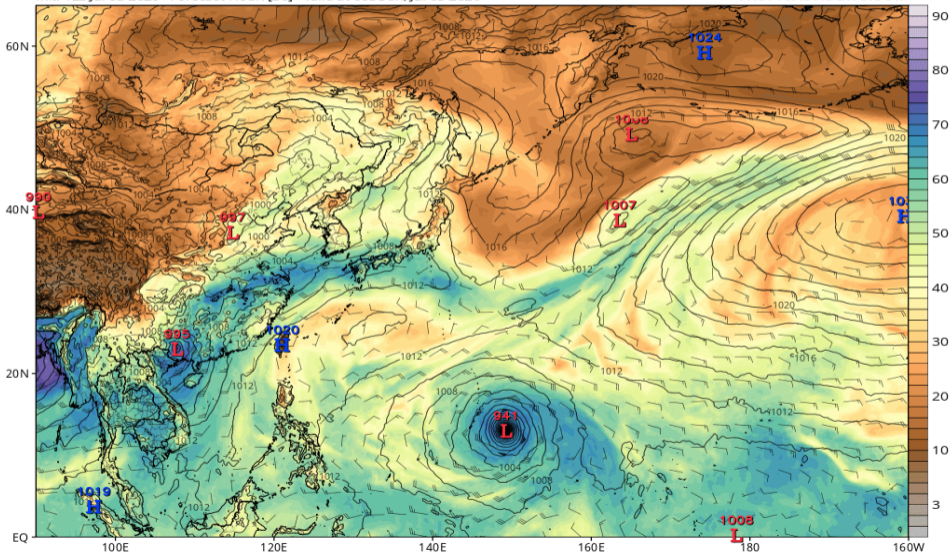


# 可降水量 (ECMWF 07/05 00Z 予報)

ECMWF MSLP (mb), Total Precipitable Water (mm), and 850mb Wind (kt)

Init: 12z Jul 03 2026 Forecast Hour: [36] valid at 00z Sun, Jul 05 2026

TROPICALTIDBITS.COM

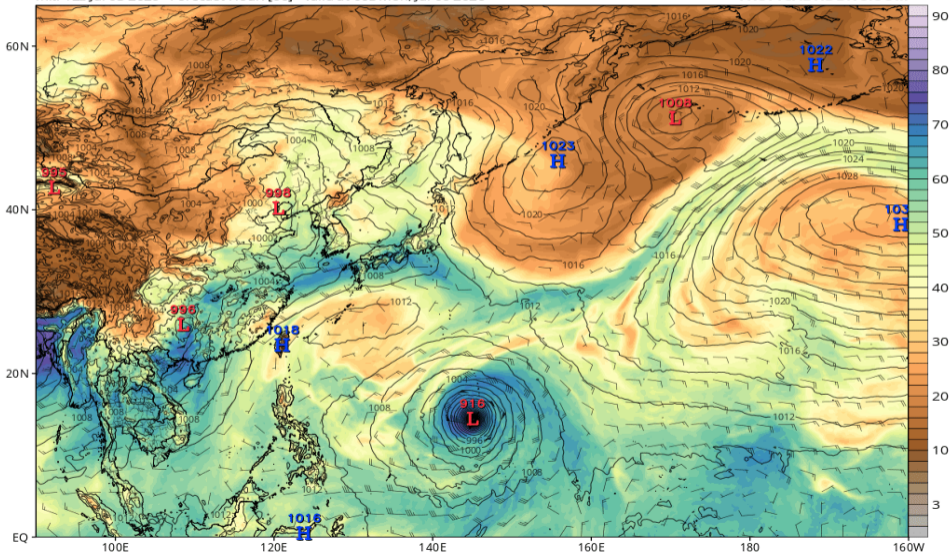


# 可降水量 (ECMWF 07/06 00Z 予報)

ECMWF MSLP (mb), Total Precipitable Water (mm), and 850mb Wind (kt)

Init: 12z Jul 03 2026 Forecast Hour: [60] valid at 00z Mon, Jul 06 2026

TROPICALTIDBITS.COM

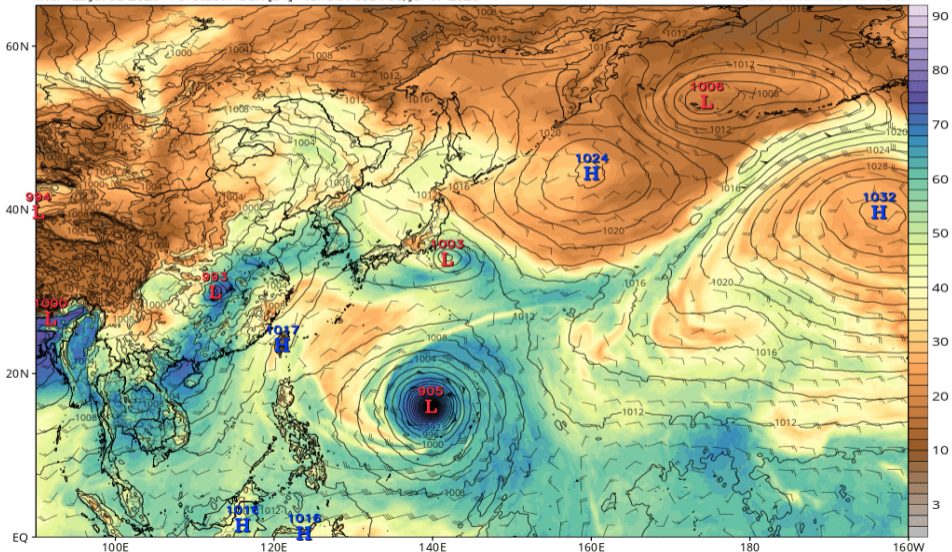


# 可降水量 (ECMWF 07/07 00Z 予報)

ECMWF MSLP (mb), Total Precipitable Water (mm), and 850mb Wind (kt)

Init: 12z Jul 03 2026 Forecast Hour: [84] valid at 00z Tue, Jul 07 2026

TROPICALTIDBITS.COM

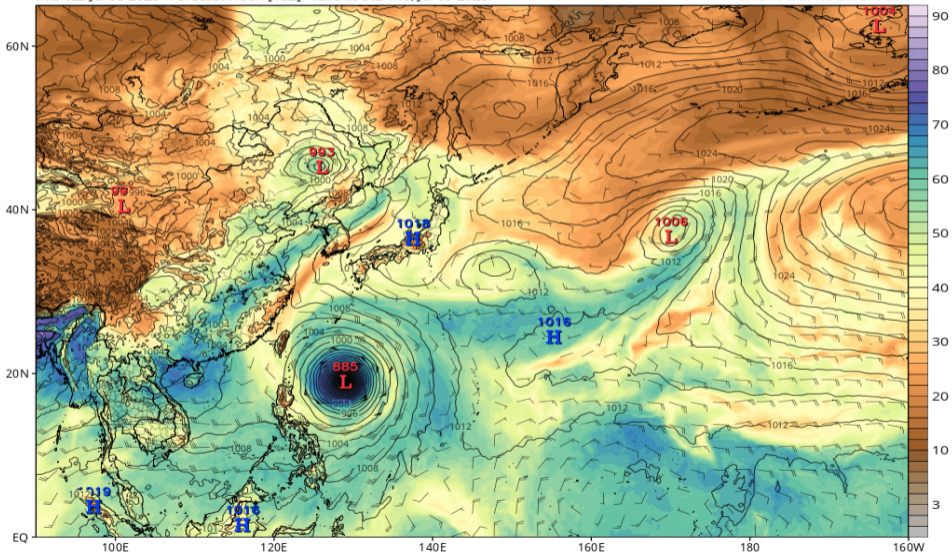


# 可降水量 (ECMWF 07/09 00Z 予報)

ECMWF MSLP (mb), Total Precipitable Water (mm), and 850mb Wind (kt)

Init: 12z Jul 03 2026 Forecast Hour: [132] valid at 00z Thu, Jul 09 2026

TROPICALTIDBITS.COM

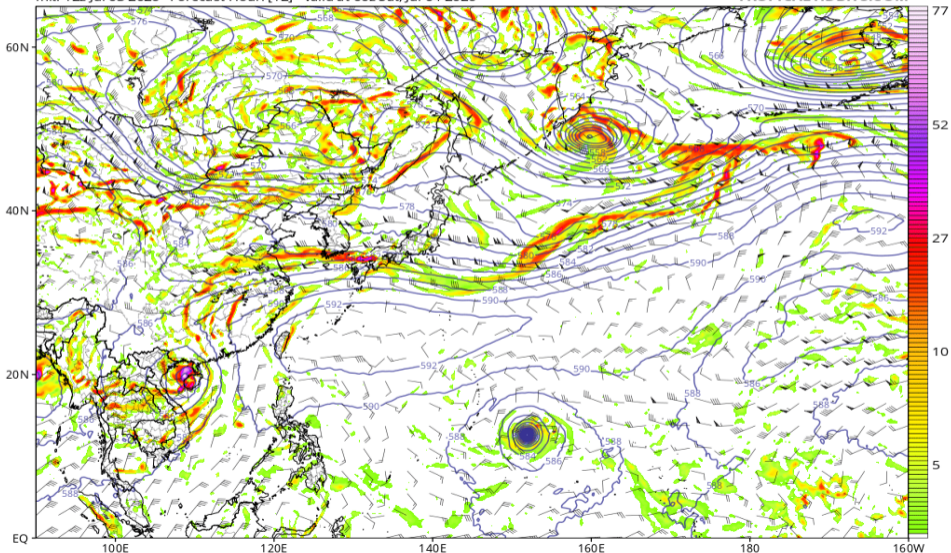


# 渦度 850, Z500, UV200 (GFS 07/04 00Z 予報)

GFS 850 hPa Cyclonic Vorticity ( $10^5 \text{ s}^{-1}$ ), 500 hPa Height (dam), and 200 hPa Wind (kt)

Init: 12z Jul 03 2026 Forecast Hour: [12] valid at 00z Sat, Jul 04 2026

TROPICALTIDBITS.COM

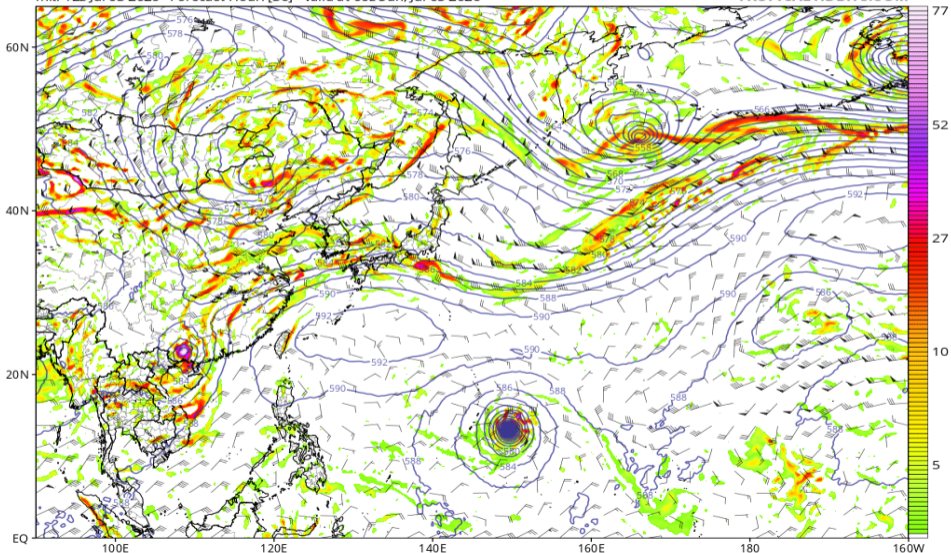


# 渦度 850, Z500, UV200 (GFS 07/05 00Z 予報)

GFS 850 hPa Cyclonic Vorticity ( $10^5 \text{ s}^{-1}$ ), 500 hPa Height (dam), and 200 hPa Wind (kt)

Init: 12z Jul 03 2026 Forecast Hour: [36] valid at 00z Sun, Jul 05 2026

TROPICALTIDBITS.COM

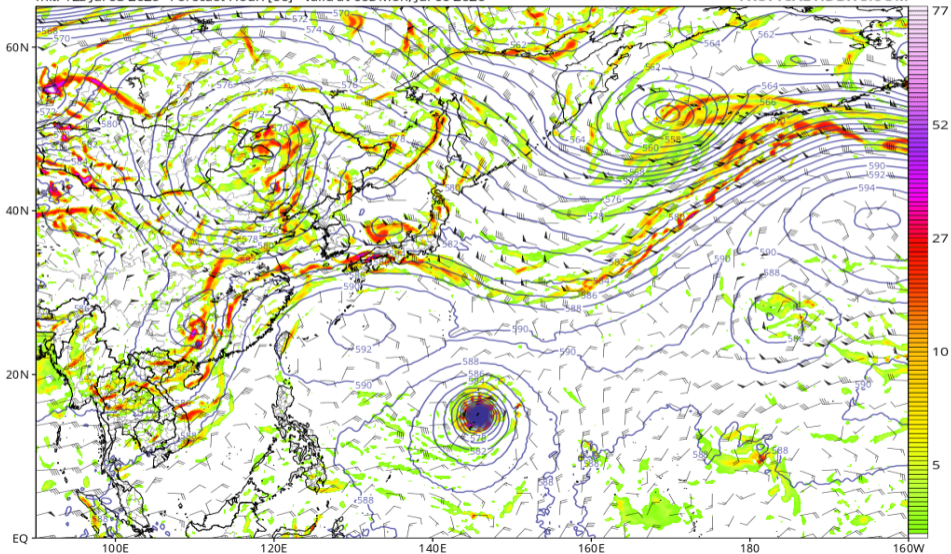


# 渦度 850, Z500, UV200 (GFS 07/06 00Z 予報)

GFS 850 hPa Cyclonic Vorticity ( $10^5 \text{ s}^{-1}$ ), 500 hPa Height (dam), and 200 hPa Wind (kt)

Init: 12z Jul 03 2026 Forecast Hour: [60] valid at 00z Mon, Jul 06 2026

TROPICALTIDBITS.COM

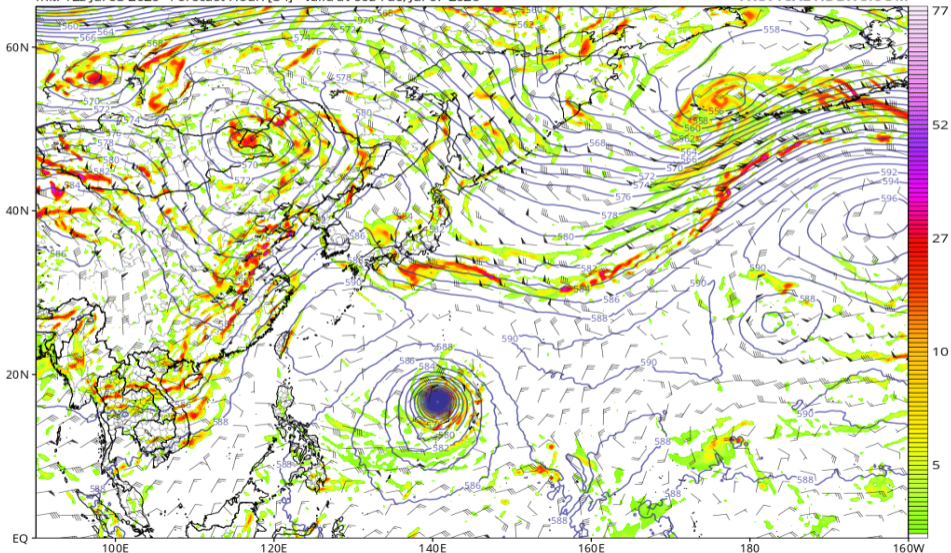


# 渦度 850, Z500, UV200 (GFS 07/07 00Z 予報)

GFS 850 hPa Cyclonic Vorticity ( $10^5 \text{ s}^{-1}$ ), 500 hPa Height (dam), and 200 hPa Wind (kt)

Init: 12z Jul 03 2026 Forecast Hour: [84] valid at 00z Tue, Jul 07 2026

TROPICALTIDBITS.COM

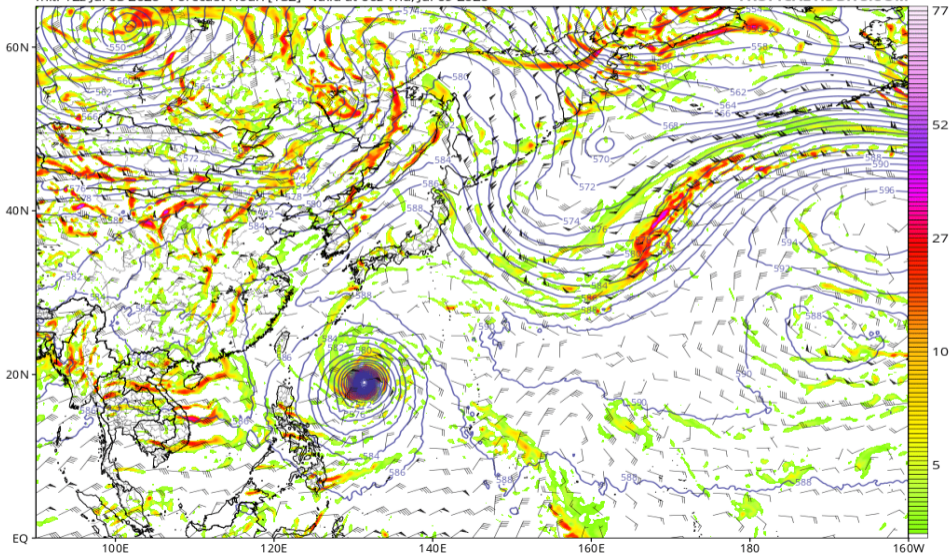


# 渦度 850, Z500, UV200 (GFS 07/09 00Z 予報)

GFS 850 hPa Cyclonic Vorticity ( $10^5 \text{ s}^{-1}$ ), 500 hPa Height (dam), and 200 hPa Wind (kt)

Init: 12z Jul 03 2026 Forecast Hour: [132] valid at 00z Thu, Jul 09 2026

TROPICALTIDBITS.COM

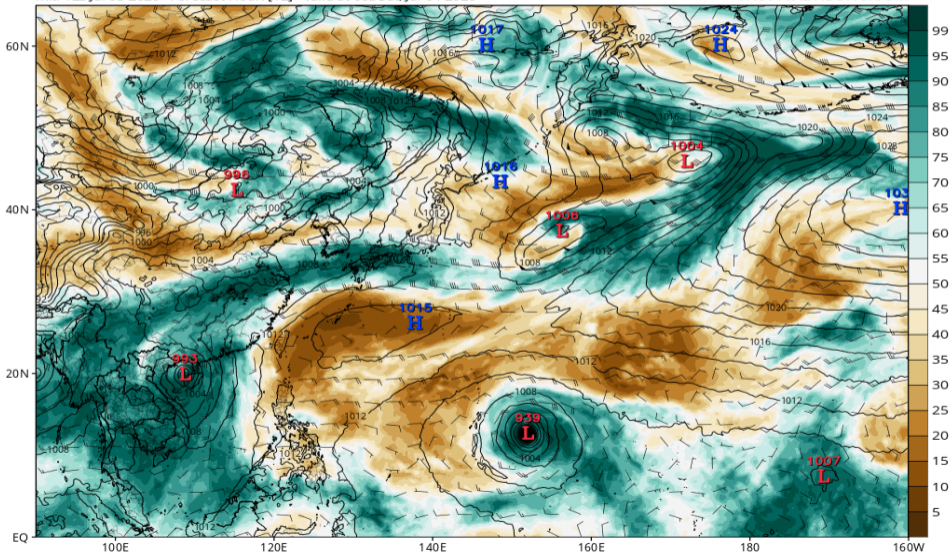


# RH700-300 (GFS 07/04 00Z 予報)

GFS MSLP (mb), 700-300 hPa Relative Humidity (%), and 700-300 hPa Wind (kt)

Init: 12z Jul 03 2026 Forecast Hour: [12] valid at 00z Sat, Jul 04 2026

TROPICALTIDBITS.COM

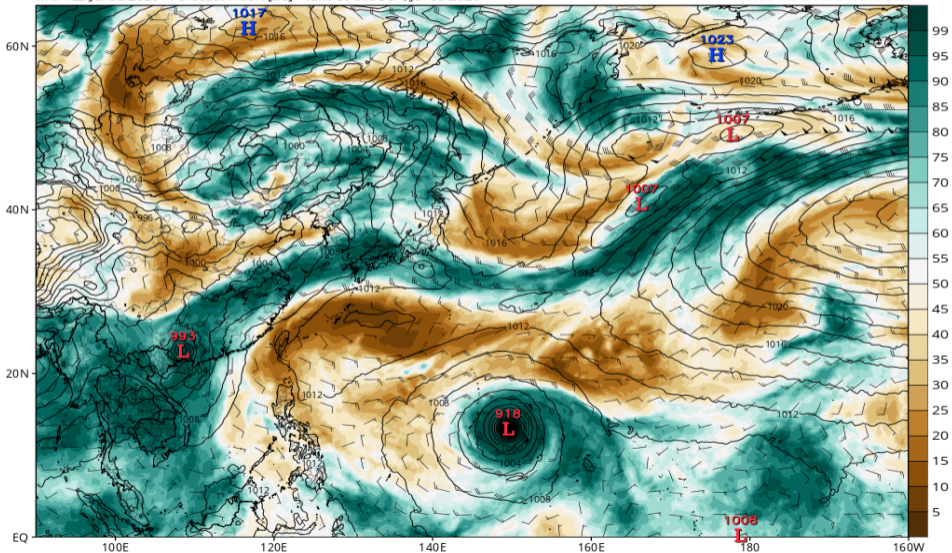


# RH700-300 (GFS 07/05 00Z 予報)

GFS MSLP (mb), 700-300 hPa Relative Humidity (%), and 700-300 hPa Wind (kt)

Init: 12z Jul 03 2026 Forecast Hour: [36] valid at 00z Sun, Jul 05 2026

TROPICALTIDBITS.COM

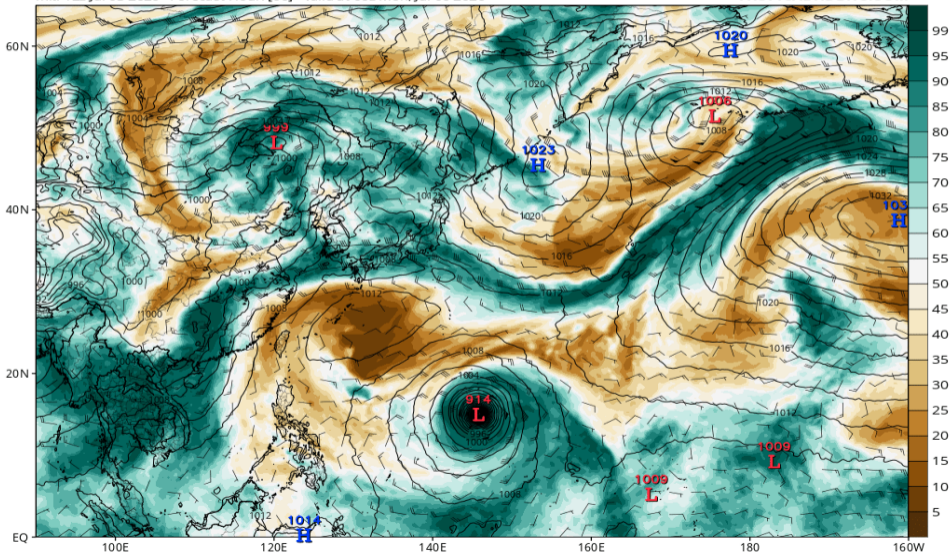


# RH700-300 (GFS 07/06 00Z 予報)

GFS MSLP (mb), 700-300 hPa Relative Humidity (%), and 700-300 hPa Wind (kt)

Init: 12z Jul 03 2026 Forecast Hour: [60] valid at 00z Mon, Jul 06 2026

TROPICALTIDBITS.COM

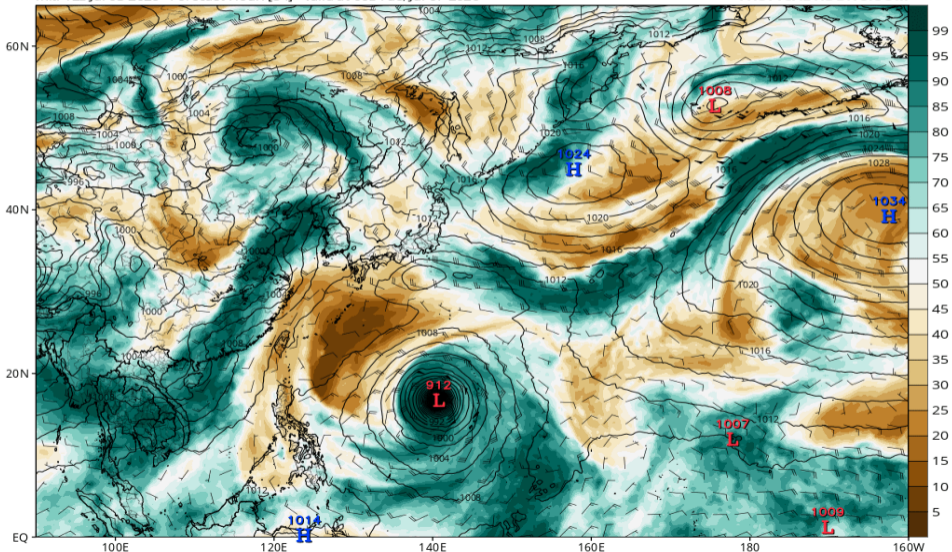


# RH700-300 (GFS 07/07 00Z 予報)

GFS MSLP (mb), 700-300 hPa Relative Humidity (%), and 700-300 hPa Wind (kt)

Init: 12z Jul 03 2026 Forecast Hour: [84] valid at 00z Tue, Jul 07 2026

TROPICALTIDBITS.COM

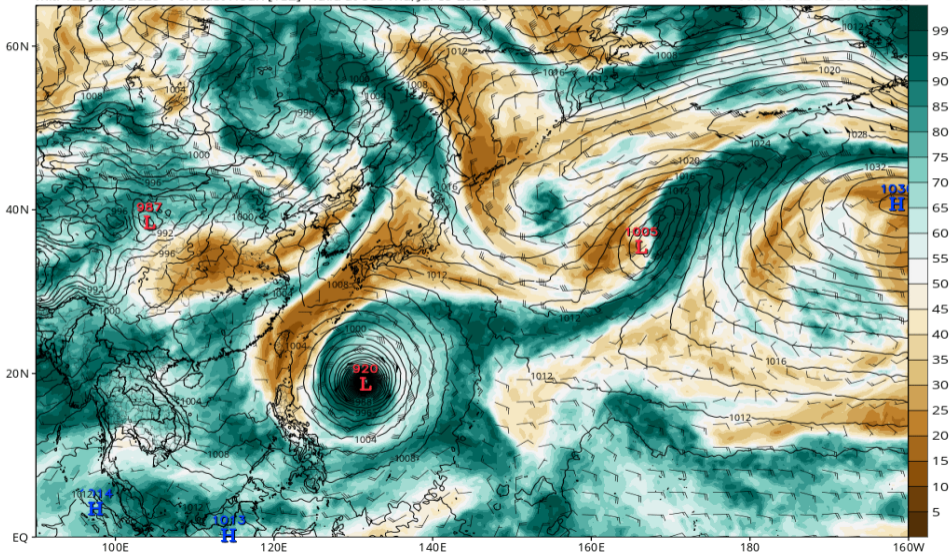


# RH700-300 (GFS 07/09 00Z 予報)

GFS MSLP (mb), 700-300 hPa Relative Humidity (%), and 700-300 hPa Wind (kt)

Init: 12z Jul 03 2026 Forecast Hour: [132] valid at 00z Thu, Jul 09 2026

TROPICALTIDBITS.COM

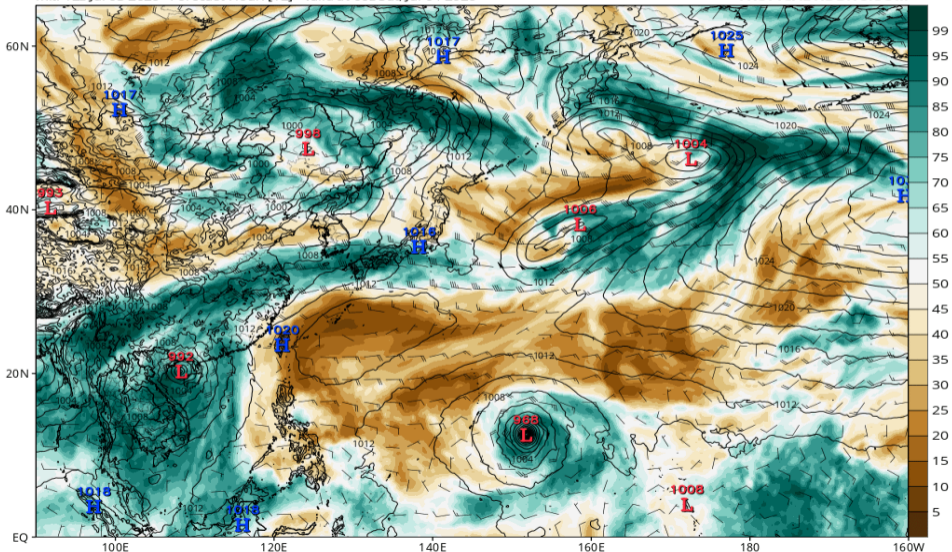


# RH700-300 (ECMWF 07/04 00Z 予報)

ECMWF MSLP (mb), 700-300 hPa Relative Humidity (%), and 700-300 hPa Wind (kt)

Init: 12z Jul 03 2026 Forecast Hour: [12] valid at 00z Sat, Jul 04 2026

TROPICALTIDBITS.COM

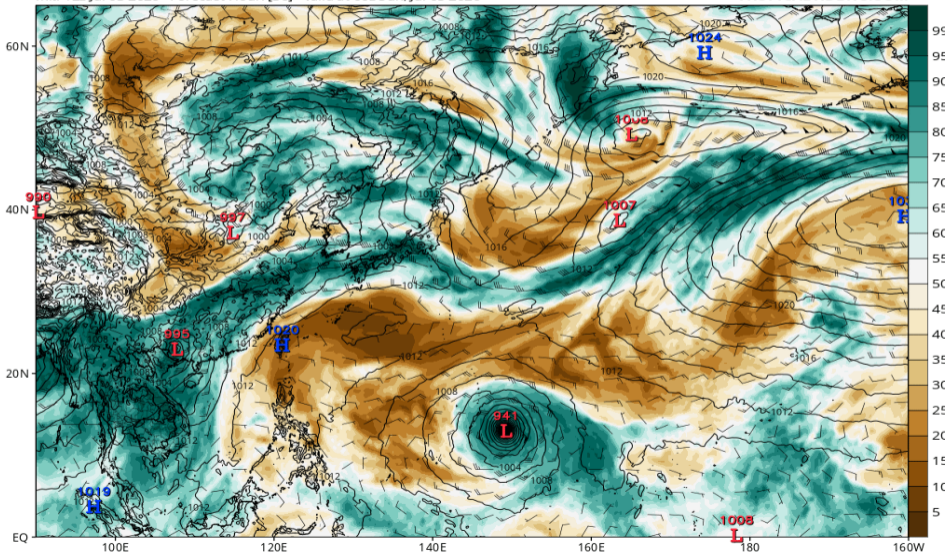


# RH700-300 (ECMWF 07/05 00Z 予報)

ECMWF MSLP (mb), 700-300 hPa Relative Humidity (%), and 700-300 hPa Wind (kt)

Init: 12z Jul 03 2026 Forecast Hour: [36] valid at 00z Sun, Jul 05 2026

TROPICALTIDBITS.COM

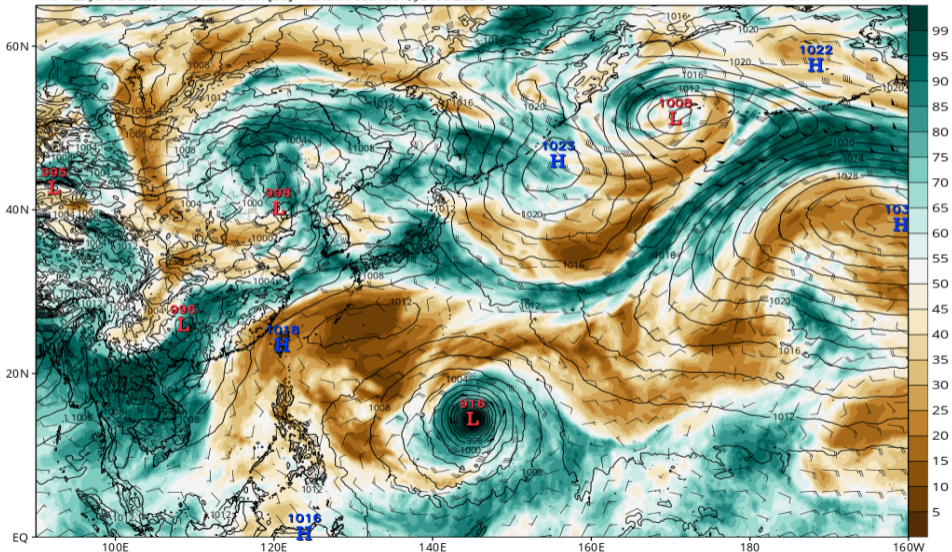


# RH700-300 (ECMWF 07/06 00Z 予報)

ECMWF MSLP (mb), 700-300 hPa Relative Humidity (%), and 700-300 hPa Wind (kt)

Init: 12z Jul 03 2026 Forecast Hour: [60] valid at 00z Mon, Jul 06 2026

TROPICALTIDBITS.COM

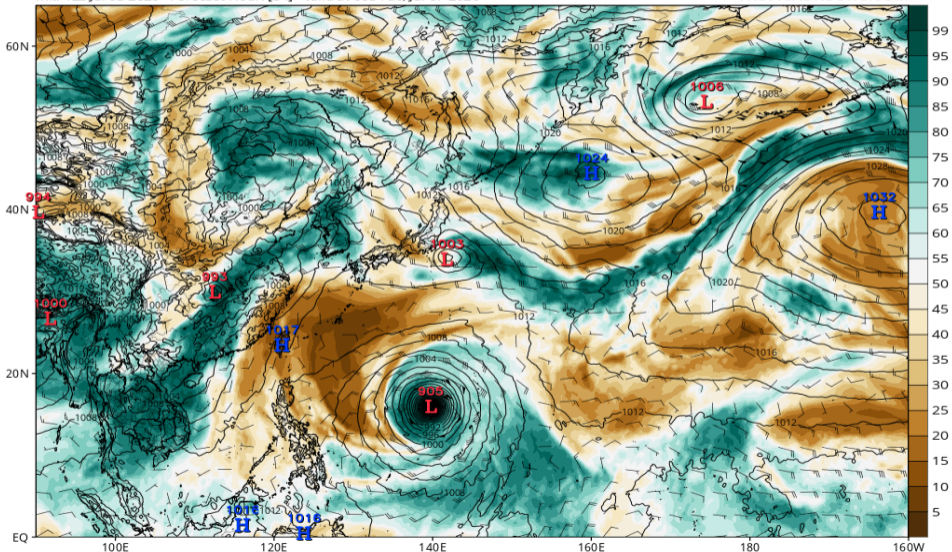


# RH700-300 (ECMWF 07/07 00Z 予報)

ECMWF MSLP (mb), 700-300 hPa Relative Humidity (%), and 700-300 hPa Wind (kt)

Init: 12z Jul 03 2026 Forecast Hour: [84] valid at 00z Tue, Jul 07 2026

TROPICALTIDBITS.COM

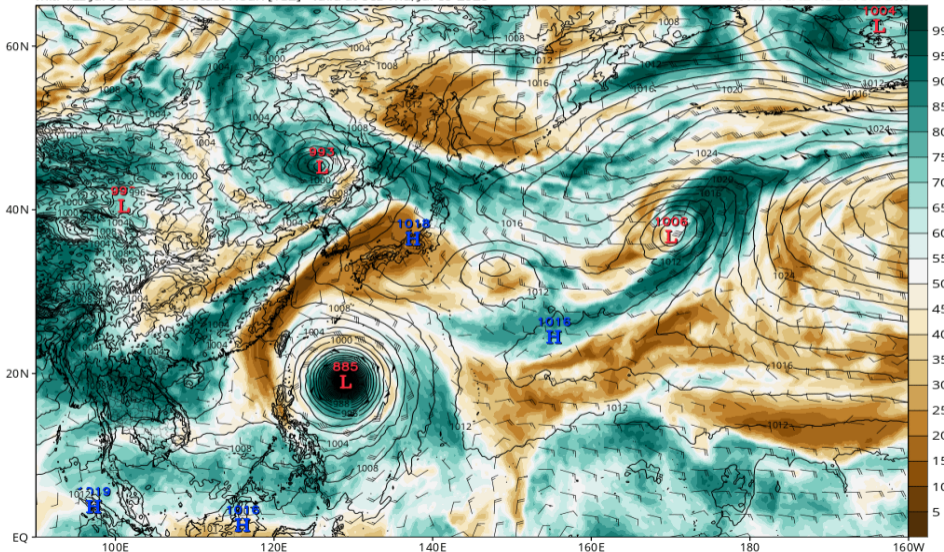


# RH700-300 (ECMWF 07/09 00Z 予報)

ECMWF MSLP (mb), 700-300 hPa Relative Humidity (%), and 700-300 hPa Wind (kt)

Init: 12z Jul 03 2026 Forecast Hour: [132] valid at 00z Thu, Jul 09 2026

TROPICALTIDBITS.COM

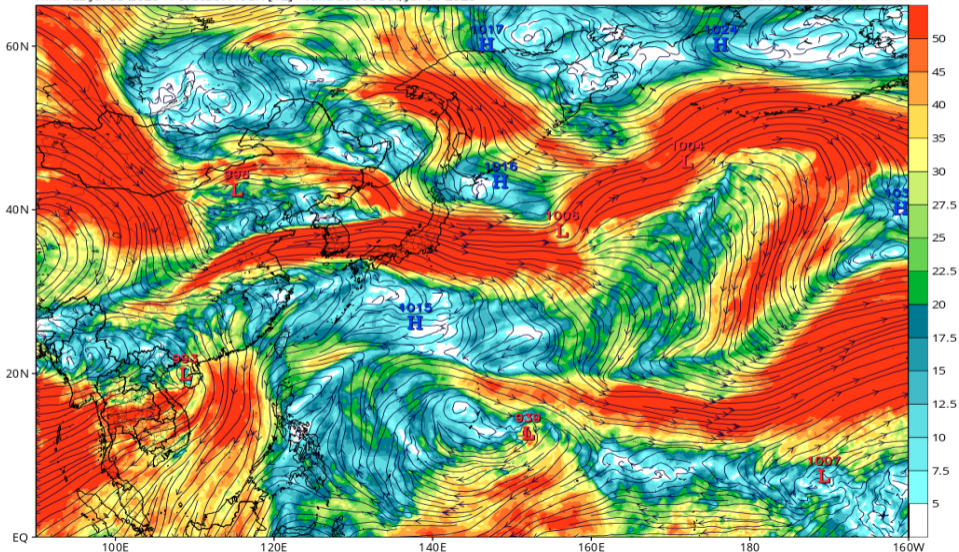


# Wshear850-200 (GFS 07/04 00Z 予報)

GFS 200mb-850mb Wind Shear (knots) & Low Centers (mb)

Init: 12z Jul 03 2026 Forecast Hour: [12] valid at 00z Sat, Jul 04 2026

TROPICALTIDBITS.COM

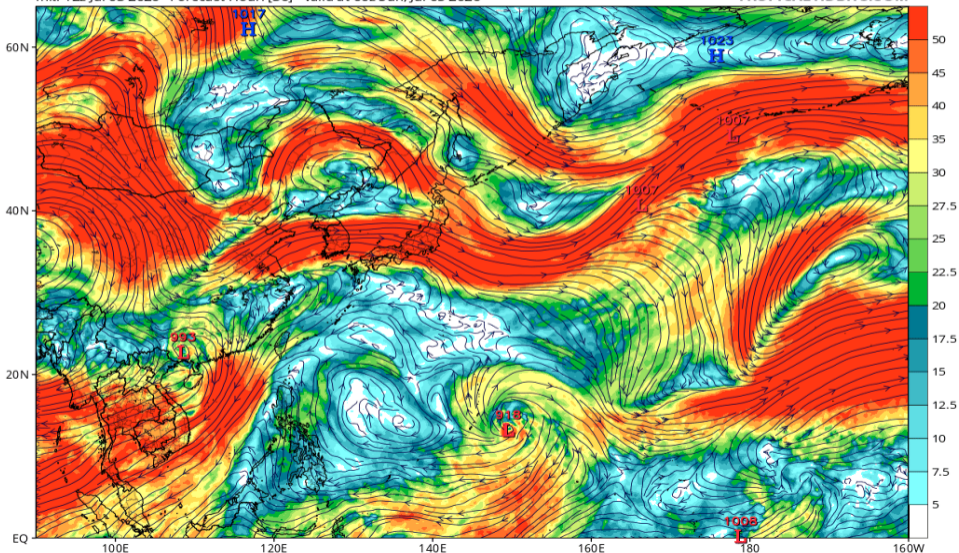


# Wshear850-200 (GFS 07/05 00Z 予報)

GFS 200mb-850mb Wind Shear (knots) & Low Centers (mb)

Init: 12z Jul 03 2026 Forecast Hour: [36] valid at 00z Sun, Jul 05 2026

TROPICALTIDBITS.COM

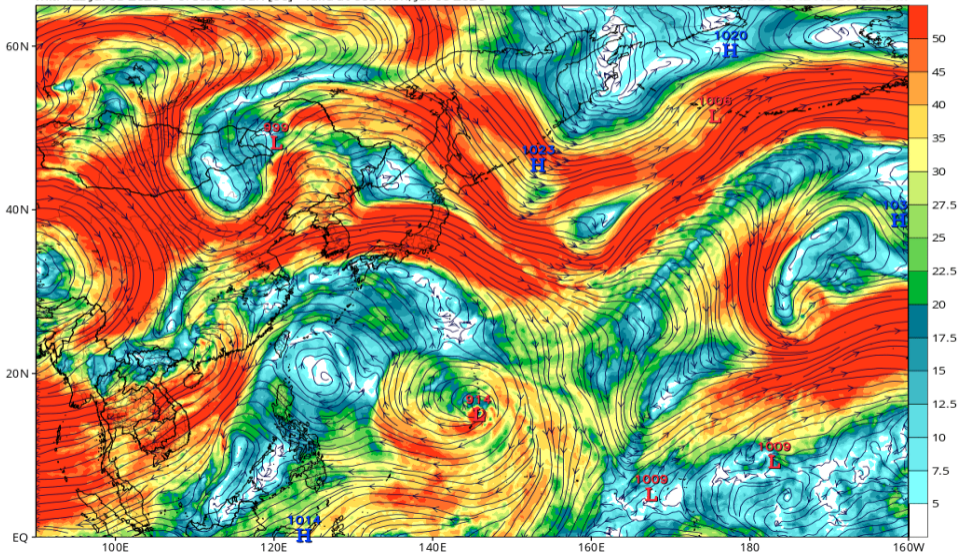


# Wshear850-200 (GFS 07/06 00Z 予報)

GFS 200mb-850mb Wind Shear (knots) & Low Centers (mb)

Init: 12z Jul 03 2026 Forecast Hour: [60] valid at 00z Mon, Jul 06 2026

TROPICALTIDBITS.COM

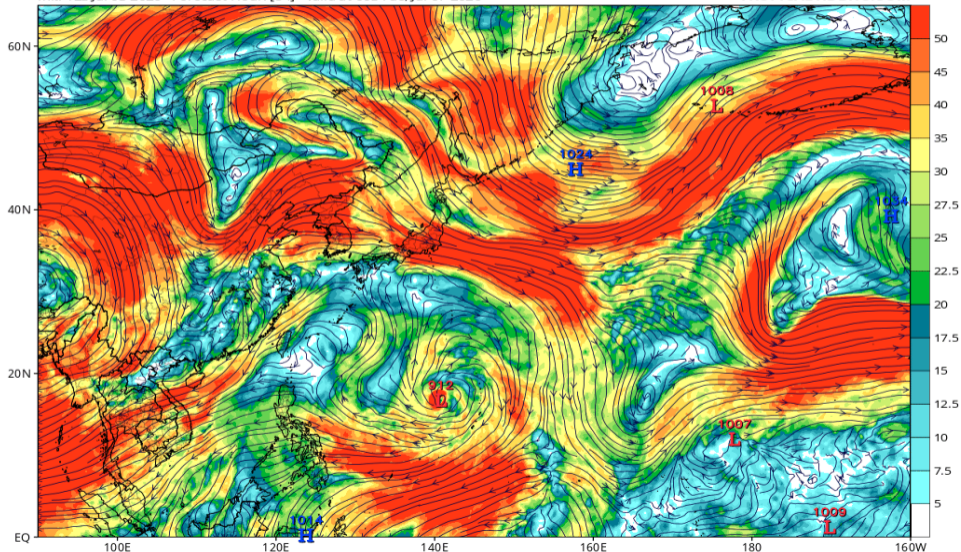


# Wshear850-200 (GFS 07/07 00Z 予報)

GFS 200mb-850mb Wind Shear (knots) & Low Centers (mb)

Init: 12z Jul 03 2026 Forecast Hour: [84] valid at 00z Tue, Jul 07 2026

TROPICALTIDBITS.COM

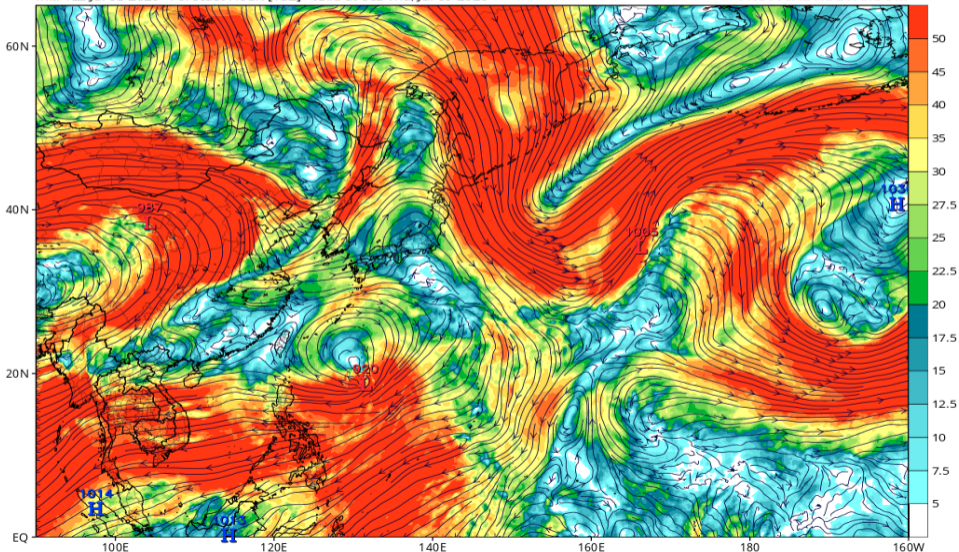


# Wshear850-200 (GFS 07/09 00Z 予報)

GFS 200mb-850mb Wind Shear (knots) & Low Centers (mb)

Init: 12z Jul 03 2026 Forecast Hour: [132] valid at 00z Thu, Jul 09 2026

TROPICALTIDBITS.COM

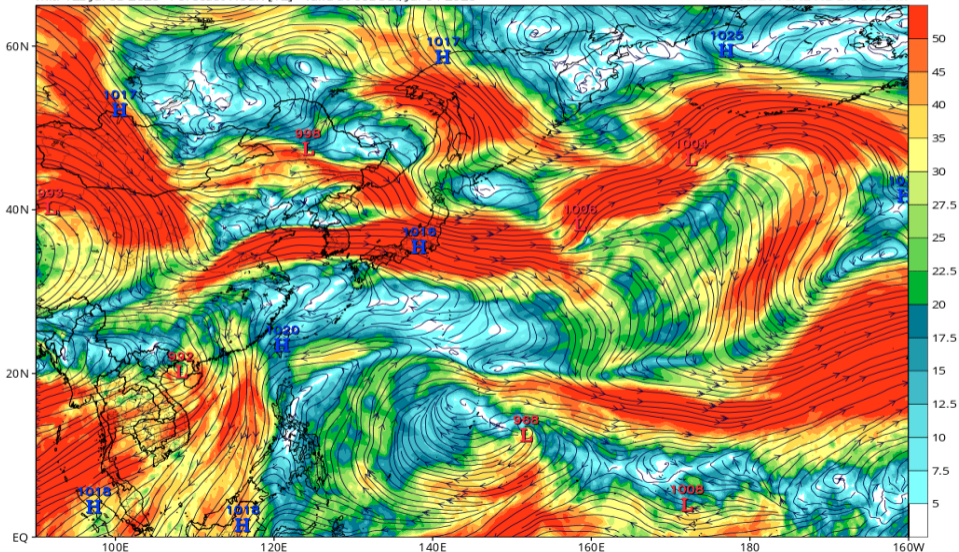


# Wshear850-200 (ECMWF 07/04 00Z 予報)

ECMWF 200mb-850mb Wind Shear (knots) & Low Centers (mb)

Init: 12z Jul 03 2026 Forecast Hour: [12] valid at 00z Sat, Jul 04 2026

TROPICALTIDBITS.COM

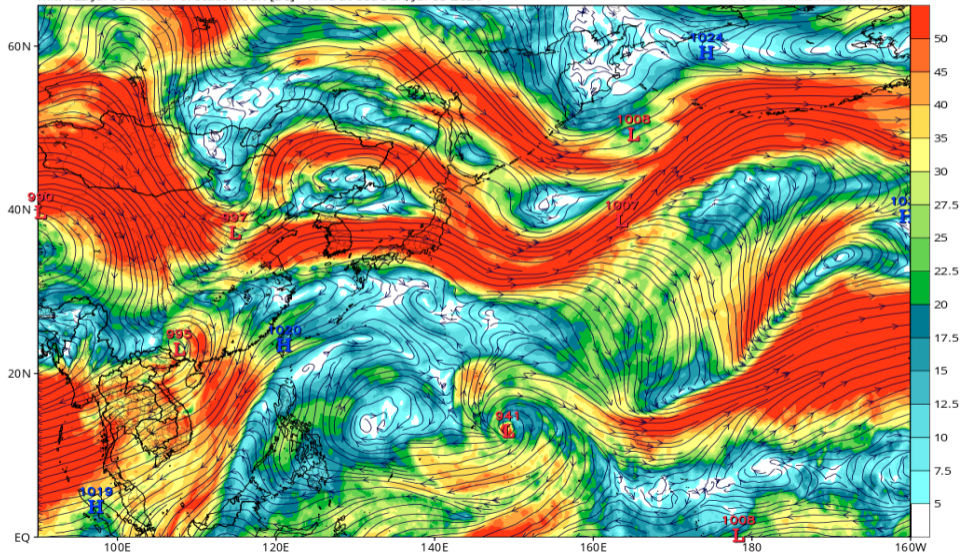


# Wshear850-200 (ECMWF 07/05 00Z 予報)

ECMWF 200mb-850mb Wind Shear (knots) & Low Centers (mb)

Init: 12z Jul 03 2026 Forecast Hour: [36] valid at 00z Sun, Jul 05 2026

TROPICALTIDBITS.COM

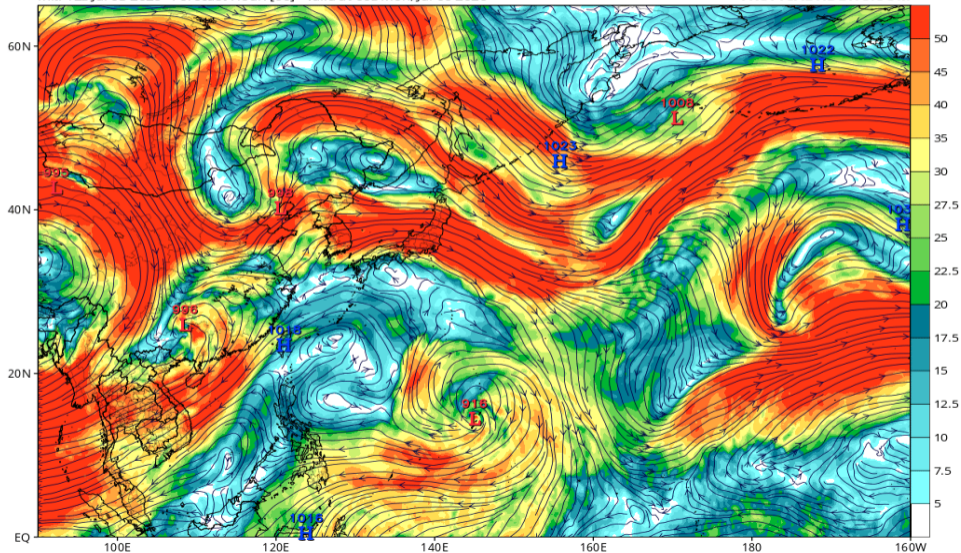


# Wshear850-200 (ECMWF 07/06 00Z 予報)

ECMWF 200mb-850mb Wind Shear (knots) & Low Centers (mb)

Init: 12z Jul 03 2026 Forecast Hour: [60] valid at 00z Mon, Jul 06 2026

TROPICALTIDBITS.COM

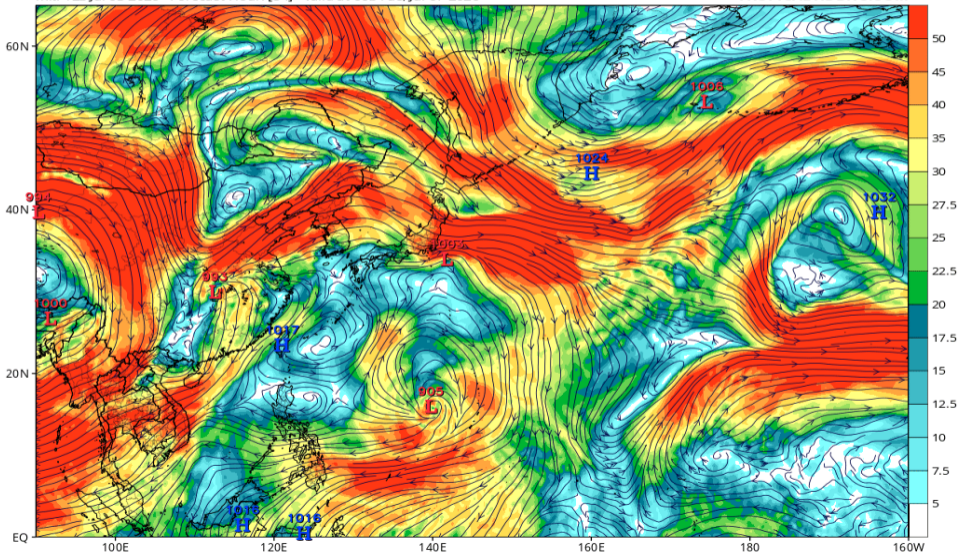


# Wshear850-200 (ECMWF 07/07 00Z 予報)

ECMWF 200mb-850mb Wind Shear (knots) & Low Centers (mb)

Init: 12z Jul 03 2026 Forecast Hour: [84] valid at 00z Tue, Jul 07 2026

TROPICALTIDBITS.COM

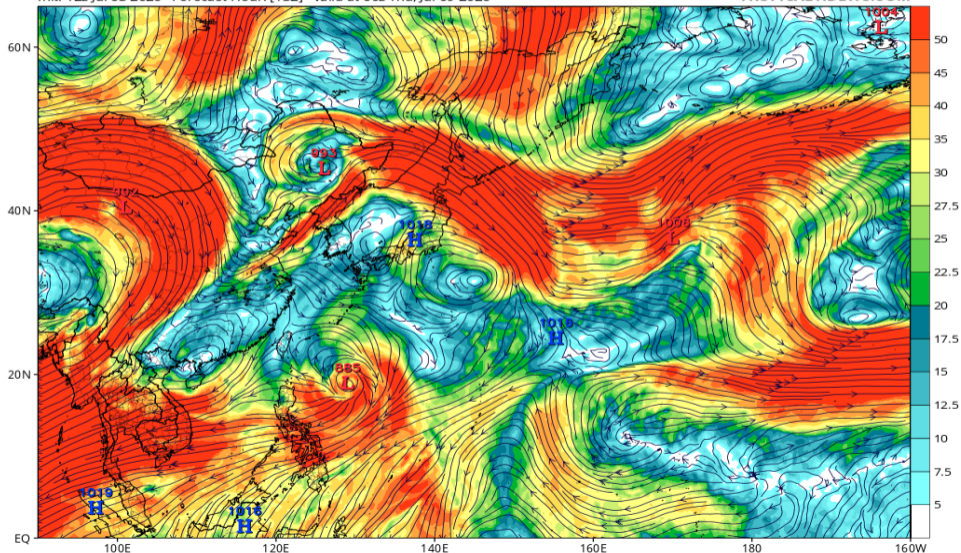


# Wshear850-200 (ECMWF 07/09 00Z 予報)

ECMWF 200mb-850mb Wind Shear (knots) & Low Centers (mb)

Init: 12z Jul 03 2026 Forecast Hour: [132] valid at 00z Thu, Jul 09 2026

TROPICALTIDBITS.COM

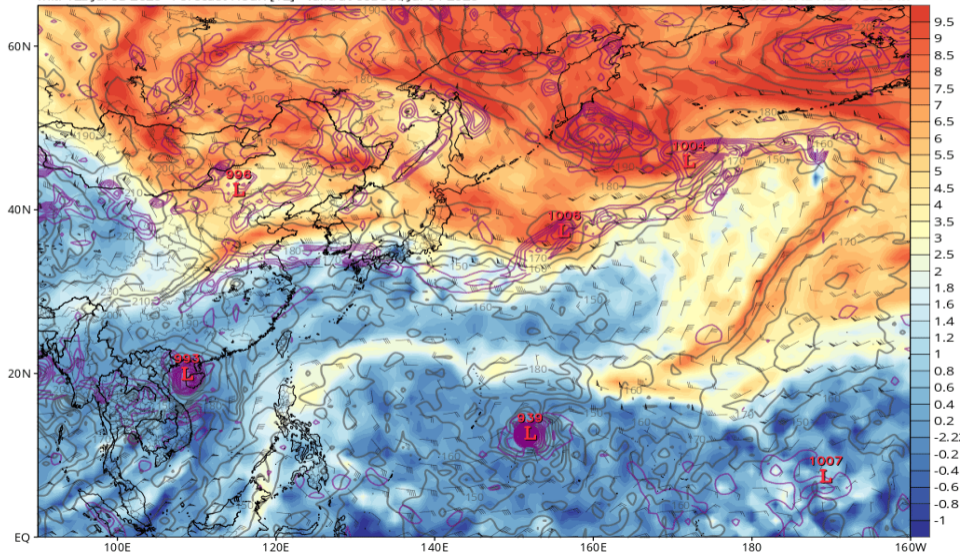


# 渦位 355K (GFS 07/04 00Z 予報)

GFS 355K Cyclonic PV (PVU), Wind (kt), Pressure (hPa, gray), & 850 hPa Cyclonic Vorticity (purple) [1.0°x1.0° grid]

Init: 12z Jul 03 2026 Forecast Hour: [12] valid at 00z Sat, Jul 04 2026

TROPICALTIDBITS.COM

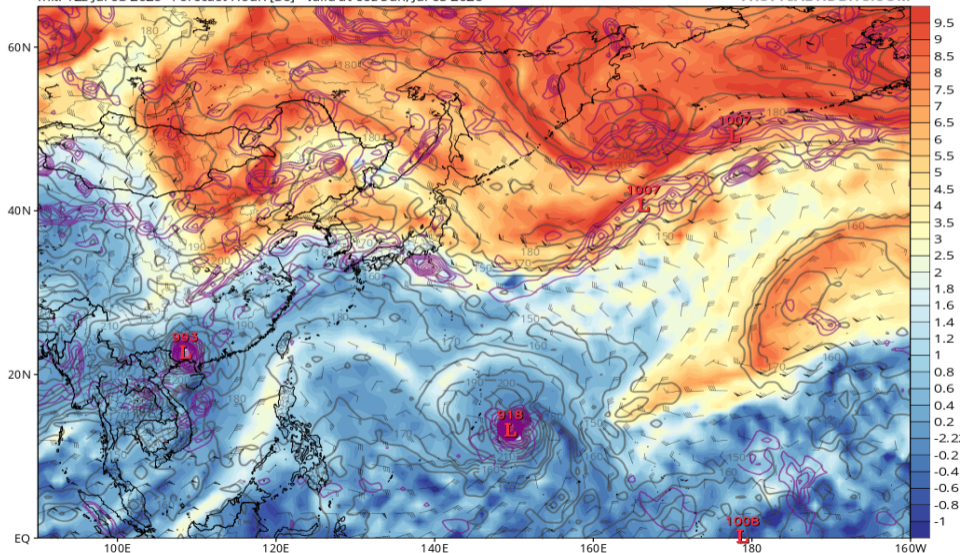


# 渦位 355K (GFS 07/05 00Z 予報)

GFS 355K Cyclonic PV (PVU), Wind (kt), Pressure (hPa, gray), & 850 hPa Cyclonic Vorticity (purple) [1.0°x1.0° grid]

Init: 12z Jul 03 2026 Forecast Hour: [36] valid at 00z Sun, Jul 05 2026

TROPICALTIDBITS.COM

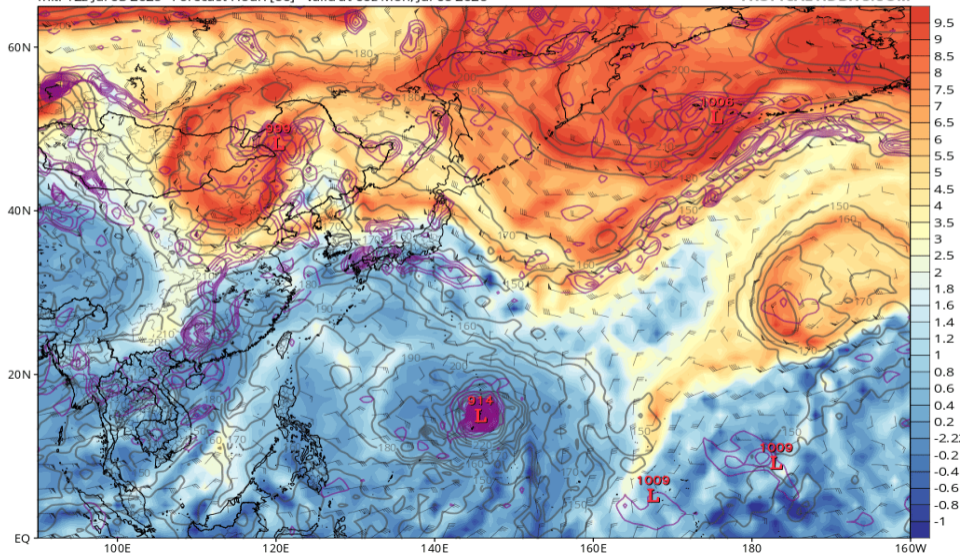


# 渦位 355K (GFS 07/06 00Z 予報)

GFS 355K Cyclonic PV (PVU), Wind (kt), Pressure (hPa, gray), & 850 hPa Cyclonic Vorticity (purple) [1.0°x1.0° grid]

Init: 12z Jul 03 2026 Forecast Hour: [60] valid at 00z Mon, Jul 06 2026

TROPICALTIDBITS.COM

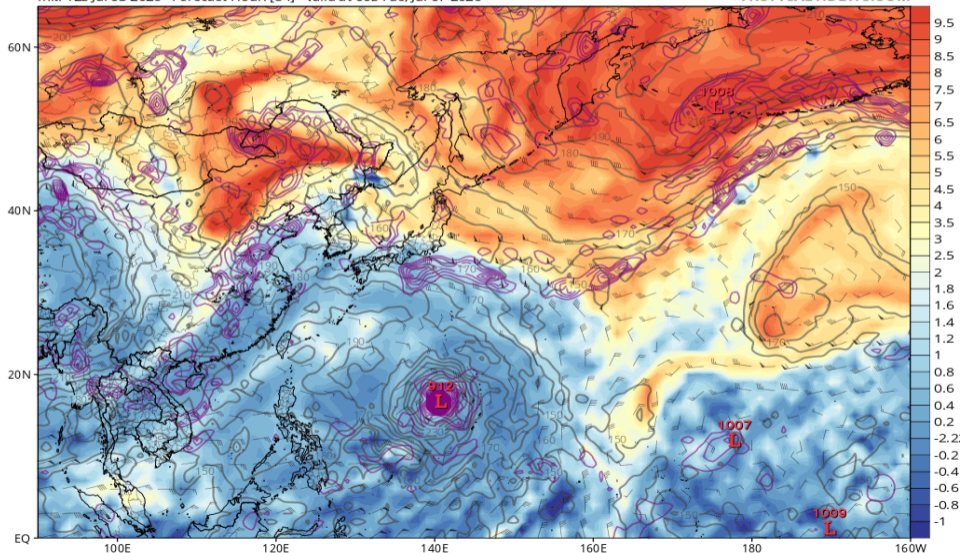


# 渦位 355K (GFS 07/07 00Z 予報)

GFS 355K Cyclonic PV (PVU), Wind (kt), Pressure (hPa, gray), & 850 hPa Cyclonic Vorticity (purple) [1.0°x1.0° grid]

Init: 12z Jul 03 2026 Forecast Hour: [84] valid at 00z Tue, Jul 07 2026

TROPICALTIDBITS.COM

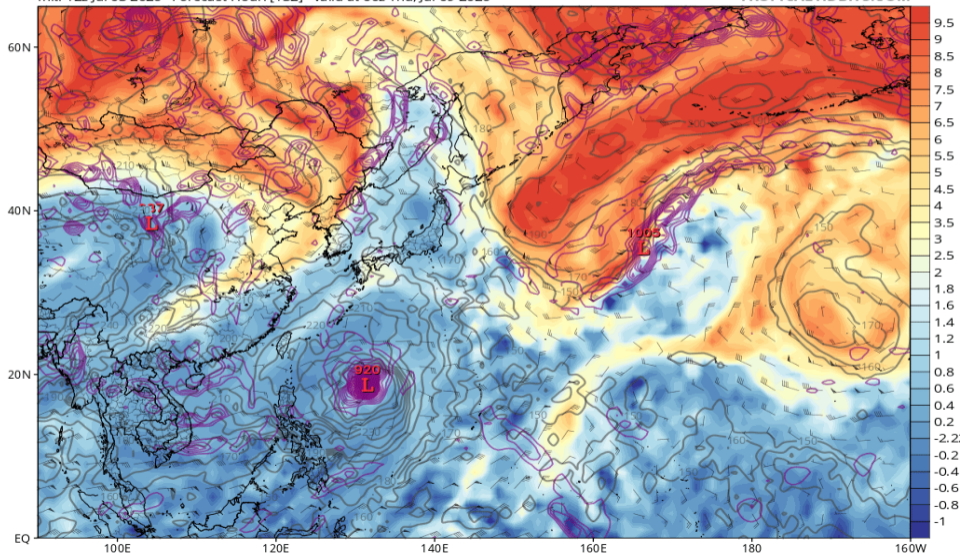


# 渦位 355K (GFS 07/09 00Z 予報)

GFS 355K Cyclonic PV (PVU), Wind (kt), Pressure (hPa, gray), & 850 hPa Cyclonic Vorticity (purple) [1.0°x1.0° grid]

Init: 12z Jul 03 2026 Forecast Hour: [132] valid at 00z Thu, Jul 09 2026

TROPICALTIDBITS.COM



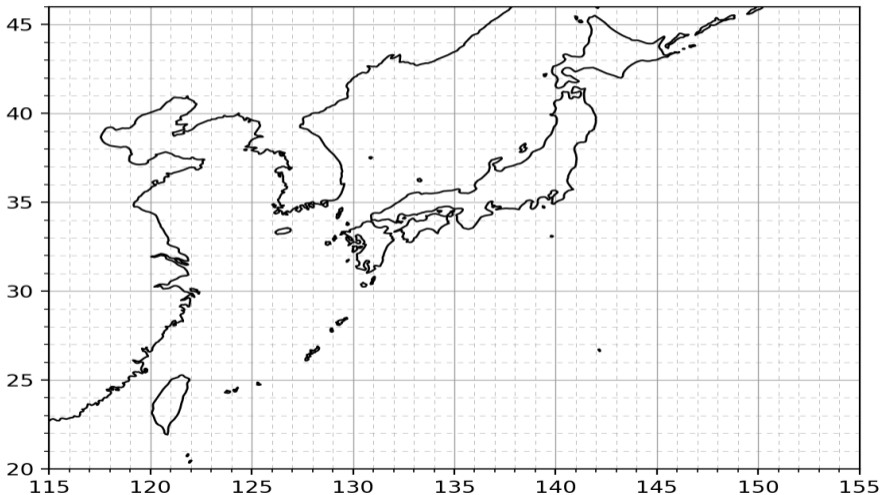
# GrandEns (IFS/AIFS/GFS/AIGFS/GSM 07/04 00Z 予報)

Grand Ensemble

weather-models.info | ECMWF Open Data (CC BY 4.0),  
NOAA data, 気象庁データ (ウェザーマップ社提供)

Init: 2026/07/03 18Z FT: 006h Valid: 2026/07/04 00Z

実際の進路予想は、気象庁の台風予報を利用してください



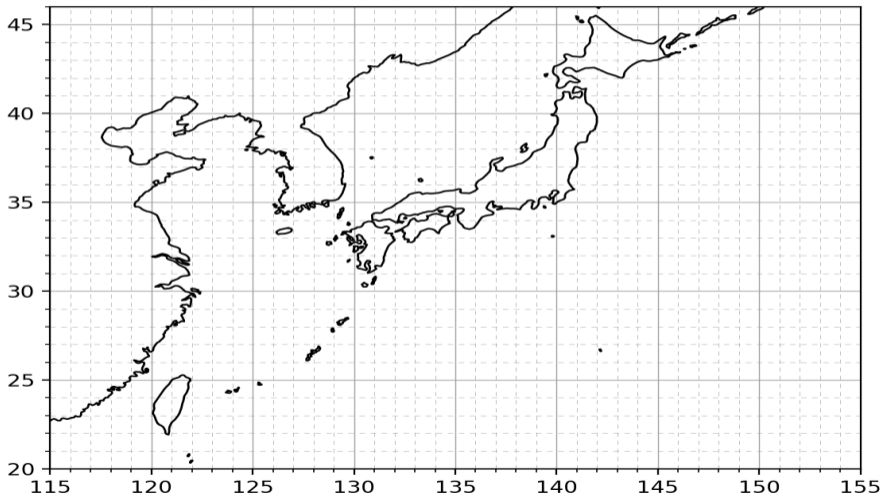
# GrandEns (IFS/AIFS/GFS/AIGFS/GSM 07/05 00Z 予報)

Grand Ensemble

weather-models.info | ECMWF Open Data (CC BY 4.0),  
NOAA data, 気象庁データ (ウェザーマップ社提供)

Init: 2026/07/03 18Z FT: 030h Valid: 2026/07/05 00Z

実際の進路予想は、気象庁の台風予報を利用してください



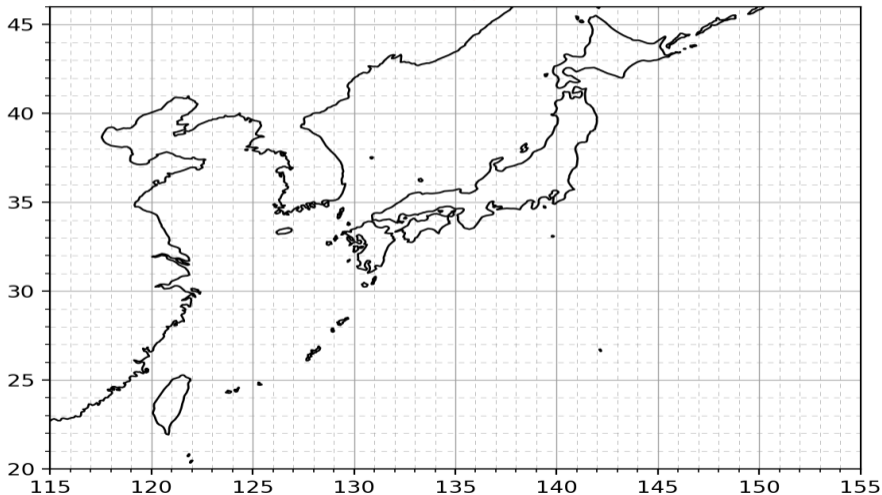
# GrandEns (IFS/AIFS/GFS/AIGFS/GSM 07/06 00Z 予報)

Grand Ensemble

weather-models.info | ECMWF Open Data (CC BY 4.0),  
NOAA data, 気象庁データ (ウェザーマップ社提供)

Init: 2026/07/03 18Z FT: 054h Valid: 2026/07/06 00Z

実際の進路予想は、気象庁の台風予報を利用してください



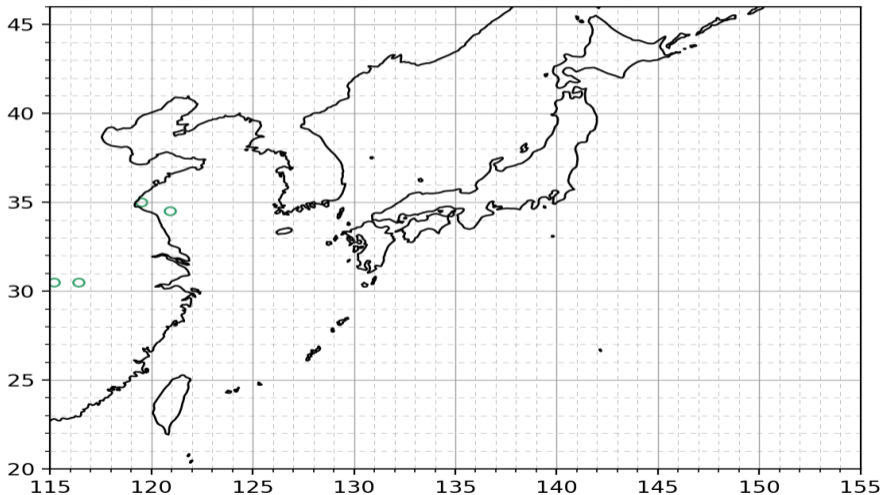
# GrandEns (IFS/AIFS/GFS/AIGFS/GSM 07/07 00Z 予報)

Grand Ensemble

weather-models.info | ECMWF Open Data (CC BY 4.0),  
NOAA data, 気象庁データ (ウェザーマップ社提供)

Init: 2026/07/03 18Z FT: 078h Valid: 2026/07/07 00Z

実際の進路予想は、気象庁の台風予報を利用してください



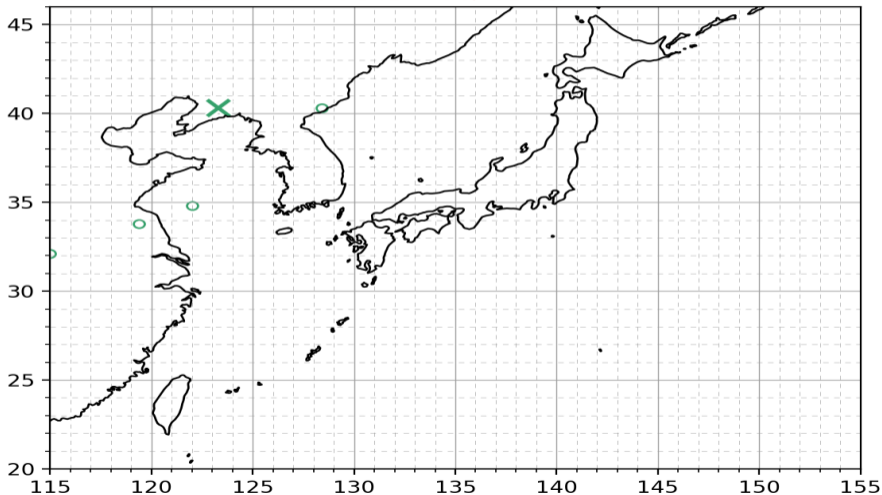
# GrandEns (IFS/AIFS/GFS/AIGFS/GSM 07/08 00Z 予報)

Grand Ensemble

weather-models.info | ECMWF Open Data (CC BY 4.0),  
NOAA data, 気象庁データ (ウェザーマップ社提供)

Init: 2026/07/03 18Z FT: 102h Valid: 2026/07/08 00Z

実際の進路予想は、気象庁の台風予報を利用してください



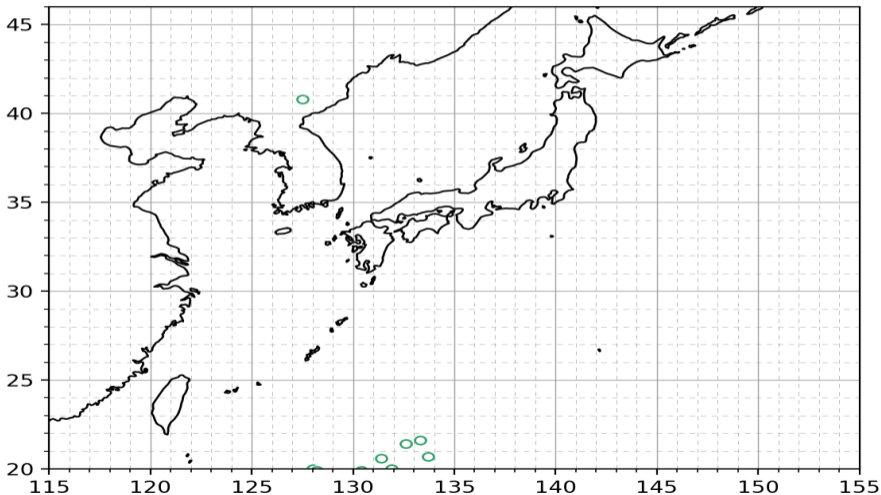
# GrandEns (IFS/AIFS/GFS/AIGFS/GSM 07/09 00Z 予報)

Grand Ensemble

weather-models.info | ECMWF Open Data (CC BY 4.0),  
NOAA data, 気象庁データ (ウェザーマップ社提供)

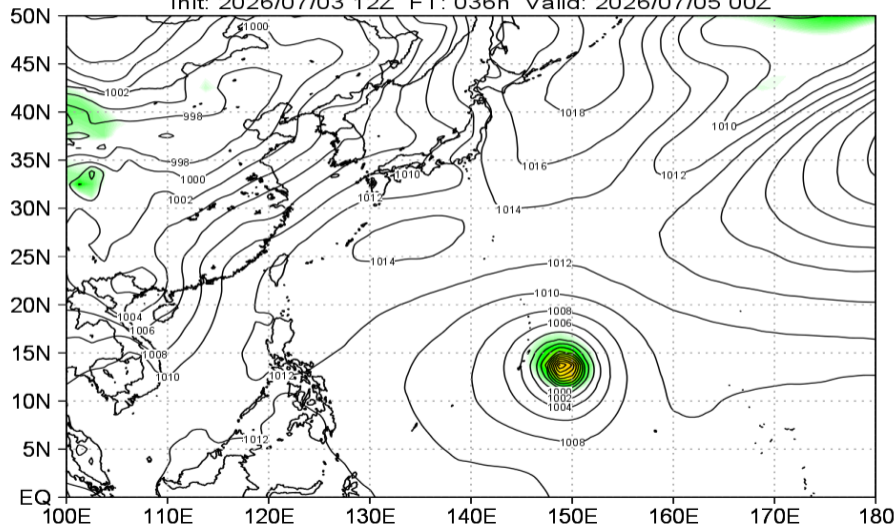
Init: 2026/07/03 18Z FT: 126h Valid: 2026/07/09 00Z

実際の進路予想は、気象庁の台風予報を利用してください



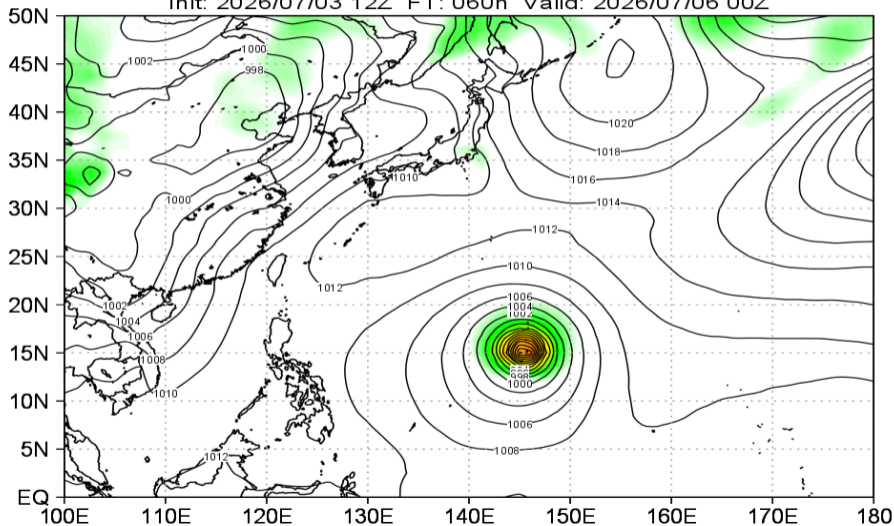
# 地上気圧 (GSMens 07/05 00Z 予報)

JMA GEPS MSLP (hPa) Mean&Spread  
Init: 2026/07/03 12Z FT: 036h Valid: 2026/07/05 00Z



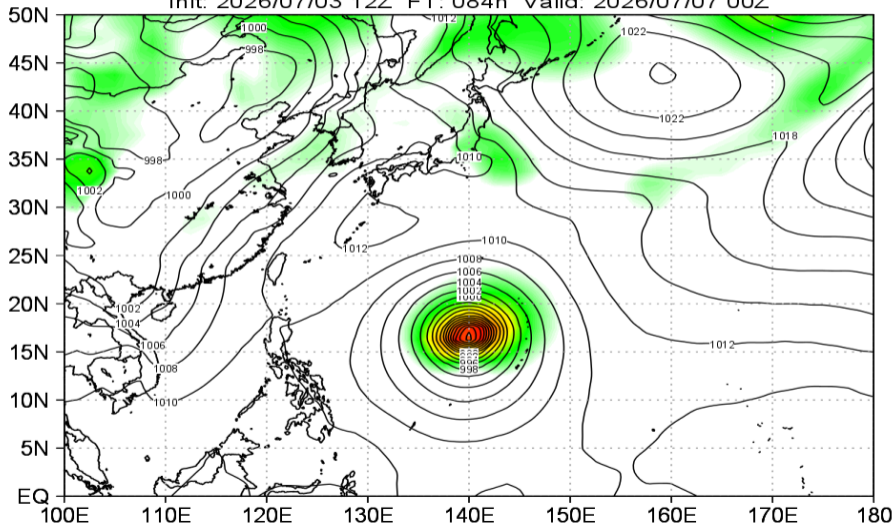
# 地上気圧 (GSMens 07/06 00Z 予報)

JMA GEPS MSLP (hPa) Mean&Spread  
Init: 2026/07/03 12Z FT: 060h Valid: 2026/07/06 00Z



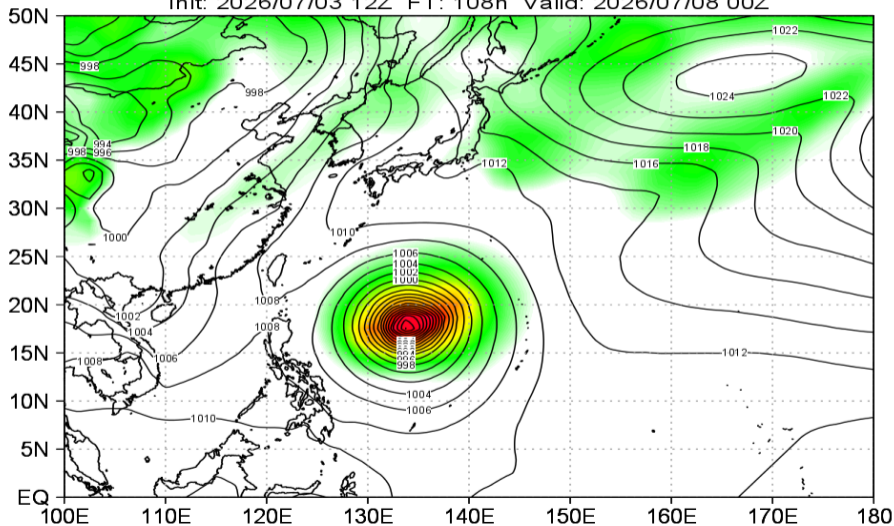
# 地上気圧 (GSMens 07/07 00Z 予報)

JMA GEPS MSLP (hPa) Mean&Spread  
Init: 2026/07/03 12Z FT: 084h Valid: 2026/07/07 00Z



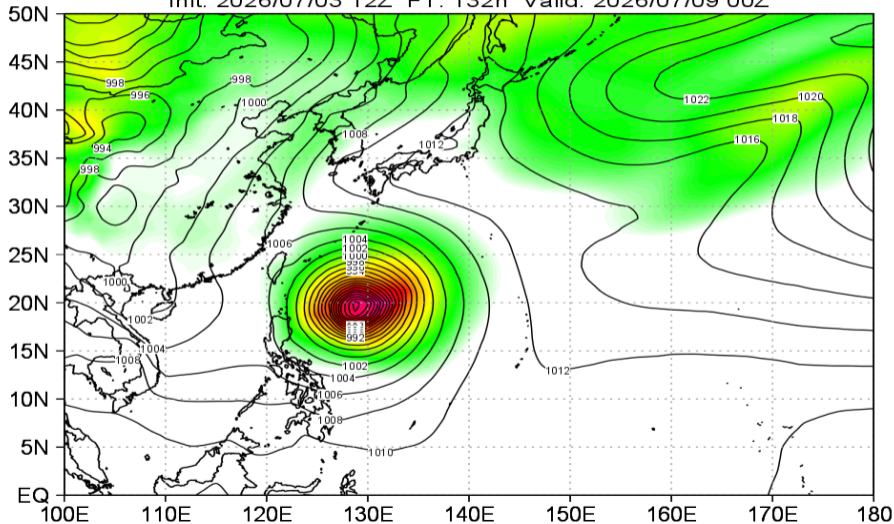
# 地上気圧 (GSMens 07/08 00Z 予報)

JMA GEPS MSLP (hPa) Mean&Spread  
Init: 2026/07/03 12Z FT: 108h Valid: 2026/07/08 00Z



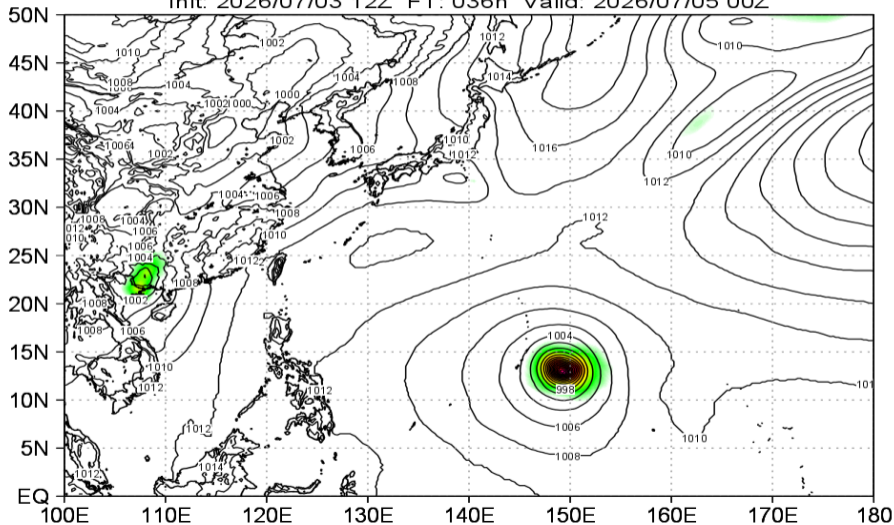
# 地上気圧 (GSMens 07/09 00Z 予報)

JMA GEPS MSLP (hPa) Mean&Spread  
Init: 2026/07/03 12Z FT: 132h Valid: 2026/07/09 00Z



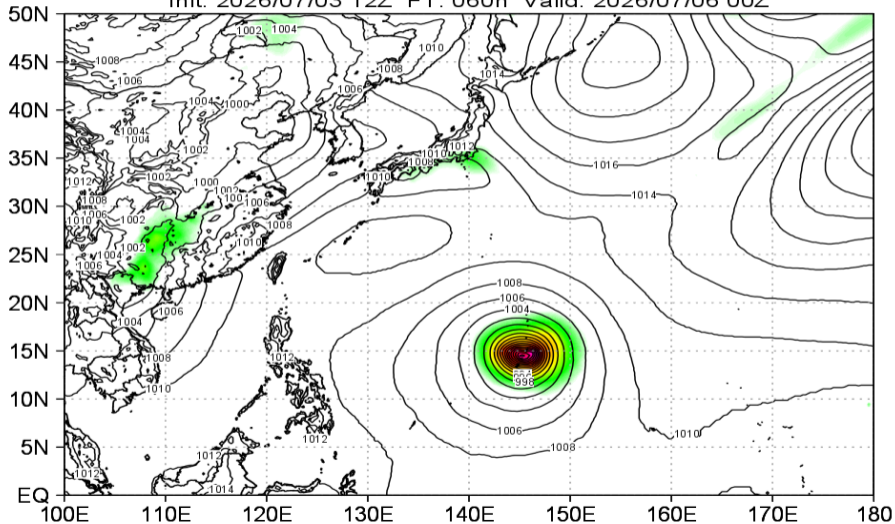
# 地上気圧 (IFSens 07/05 00Z 予報)

ECMWF IFS ENS MSLP (hPa) Mean&Spread  
Init: 2026/07/03 12Z FT: 036h Valid: 2026/07/05 00Z



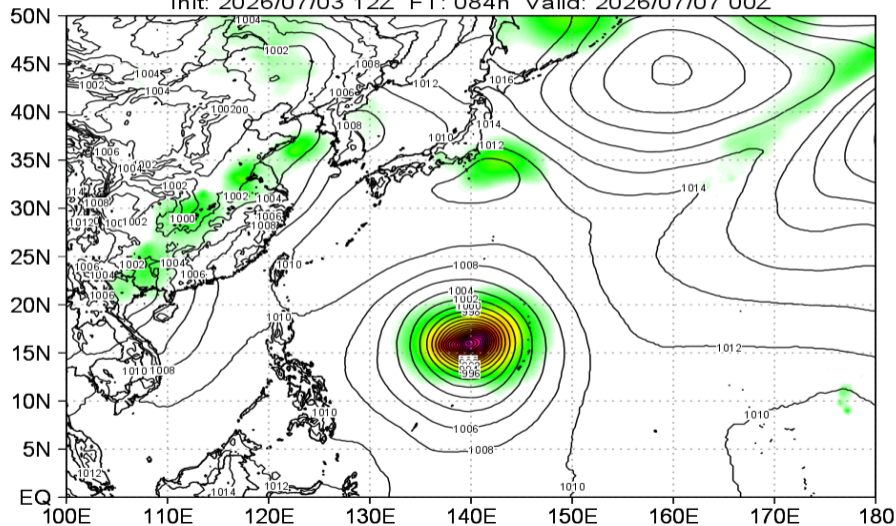
# 地上気圧 (IFSens 07/06 00Z 予報)

ECMWF IFS ENS MSLP (hPa) Mean&Spread  
Init: 2026/07/03 12Z FT: 060h Valid: 2026/07/06 00Z



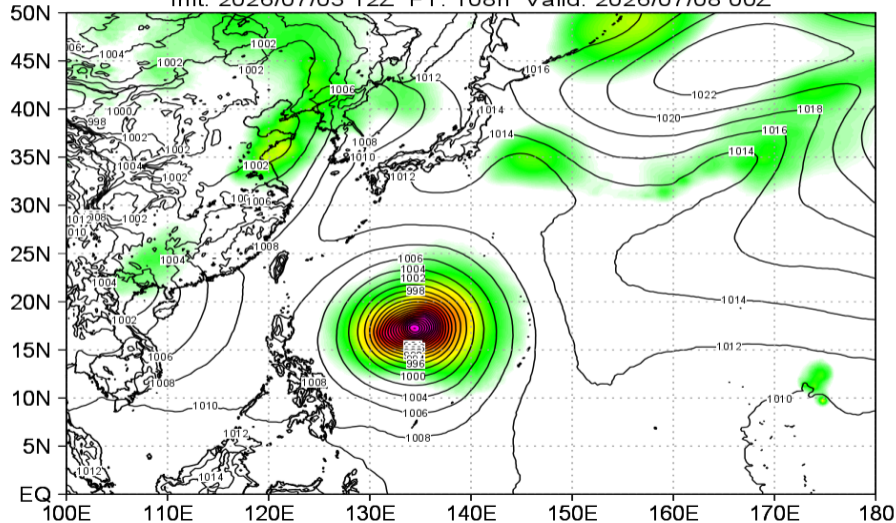
# 地上気圧 (IFSens 07/07 00Z 予報)

ECMWF IFS ENS MSLP (hPa) Mean&Spread  
Init: 2026/07/03 12Z FT: 084h Valid: 2026/07/07 00Z



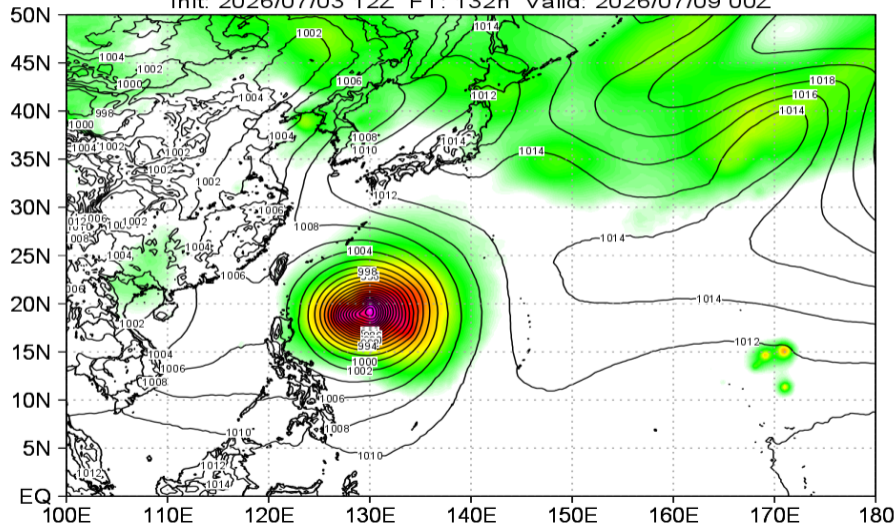
# 地上気圧 (IFSens 07/08 00Z 予報)

ECMWF IFS ENS MSLP (hPa) Mean&Spread  
Init: 2026/07/03 12Z FT: 108h Valid: 2026/07/08 00Z



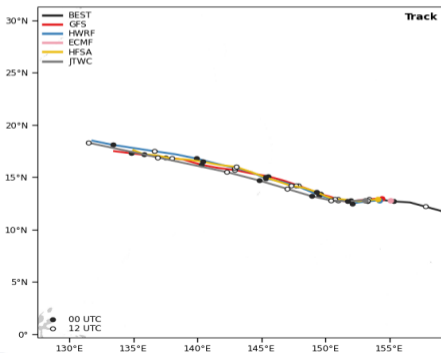
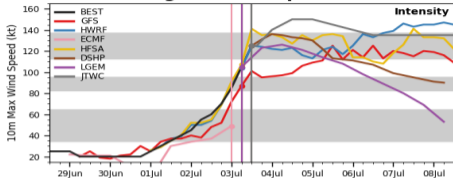
# 地上気圧 (IFSens 07/09 00Z 予報)

ECMWF IFS ENS MSLP (hPa) Mean&Spread  
Init: 2026/07/03 12Z FT: 132h Valid: 2026/07/09 00Z

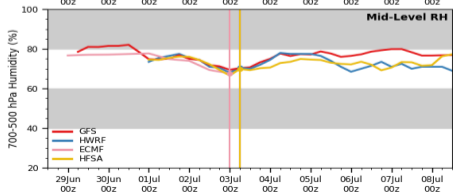
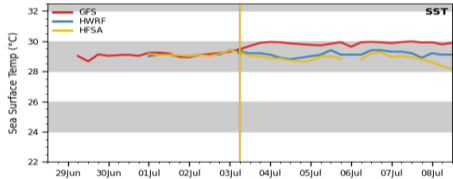
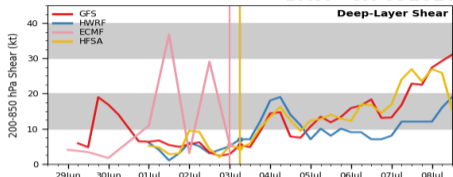


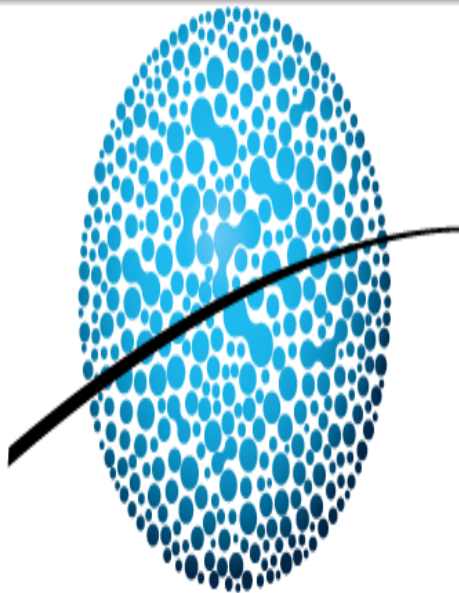
# 決定論マルチモデル予報 09W (07/03 12Z 初期値)

## Multi-Model Diagnostic Comparison



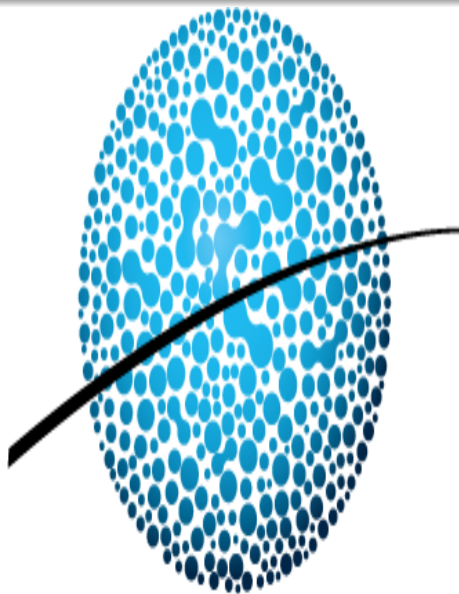
## BAVI - WP092026





**APCC**

아시아·태평양경제협력체 기후센터



APCC

아시아·태평양경제협력체 기후센터